

# PARKSIDE NORTH 7TH ADDITION

CITY OF BLAINE  
COUNTY OF ANOKA  
SEC. 12, TWP. 31, RGE. 23  
*Book 22 Form Page 46*

KNOW ALL PERSONS BY THESE PRESENTS: That Parkside North, LLC, a Minnesota limited liability company, owner of the following described property:

- Outlot A and Outlot B, PARKSIDE NORTH 6TH ADDITION, according to the recorded plat thereof, Anoka County, Minnesota.
- and
- Outlot B, PARKSIDE NORTH 5TH ADDITION, according to the recorded plat thereof, Anoka County, Minnesota.

Has caused the same to be surveyed and platted as PARKSIDE NORTH 7TH ADDITION and does hereby dedicate to the public for public use the public ways and the drainage and utility easements as created by this plat.

In witness whereof said Parkside North, LLC, a Minnesota limited liability company, has caused these presents to be signed by its proper officer this 21<sup>st</sup> day of FEB, 2017.

PARKSIDE NORTH, LLC

*Kent A. Roessler*  
Kent A. Roessler, Chief Manager

STATE OF MINNESOTA  
COUNTY OF ANOKA

This instrument was acknowledged before me on FEBRUARY 21, 2017 by Kent A. Roessler, Chief Manager of Parkside North, LLC, a Minnesota limited liability company.

*Pamela A. Proacek*

Notary Public, WENNEPIN COUNTY, MN  
My commission expires 1-31-2020

I, Thomas R. Balluff do hereby certify that this plat was prepared by me or under my direct supervision; that I am a duly Licensed Land Surveyor in the State of Minnesota; that this plat is a correct representation of the boundary survey; that all mathematical data and labels are correctly designated on this plat; that all monuments depicted on this plat have been, or will be correctly set within one year; that all water boundaries and wet lands, as defined in Minnesota Statutes, Section 505.01, Subd. 3, as of the date of this certificate are shown and labeled on this plat; and all public ways are shown and labeled on this plat.

Dated this 16<sup>th</sup> day of FEBRUARY, 2017.

*Thomas R. Balluff*  
Thomas R. Balluff, Licensed Land Surveyor  
Minnesota License No. 40361

STATE OF Minnesota  
COUNTY OF Anoka

This instrument was acknowledged before me on February 16, 2017 by Thomas R. Balluff.

*Cynthia J. Morica*  
Cynthia J. Morica  
Notary Public, Hennepin County, MN  
My commission expires January 31, 2020

CITY COUNCIL, CITY OF BLAINE, MINNESOTA

This plat of PARKSIDE NORTH 7TH ADDITION was approved and accepted by the City Council of the City of Blaine, Minnesota at a regular meeting thereof held this 15<sup>th</sup> day of December, 2016 and said plat is in compliance with the provisions of Minnesota Statutes, Section 505.03, Subd. 2.

CITY COUNCIL, CITY OF BLAINE, MINNESOTA

By: *Jan Ryger* Mayor By: *Adrian* Clerk

COUNTY SURVEYOR

I hereby certify that in accordance with Minnesota Statutes, Section 505.021, Subd. 11, this plat has been reviewed and approved this 7<sup>th</sup> day of MARCH, 2017.

By: *Larry D. Holum*  
Larry D. Holum, Anoka County Surveyor

COUNTY AUDITOR/TREASURER

Pursuant to Minnesota Statutes, Section 505.021, Subd. 9, taxes payable in the year 2017 on the land hereinbefore described have been paid. Also, pursuant to Minnesota Statutes, Section 272.12, there are no delinquent taxes and transfer entered this 7<sup>th</sup> day of MARCH, 2017.

By: *Jonell M. Sawyer*  
Jonell M. Sawyer  
Property/Tax Administrator  
By: *J. Peterson* Deputy

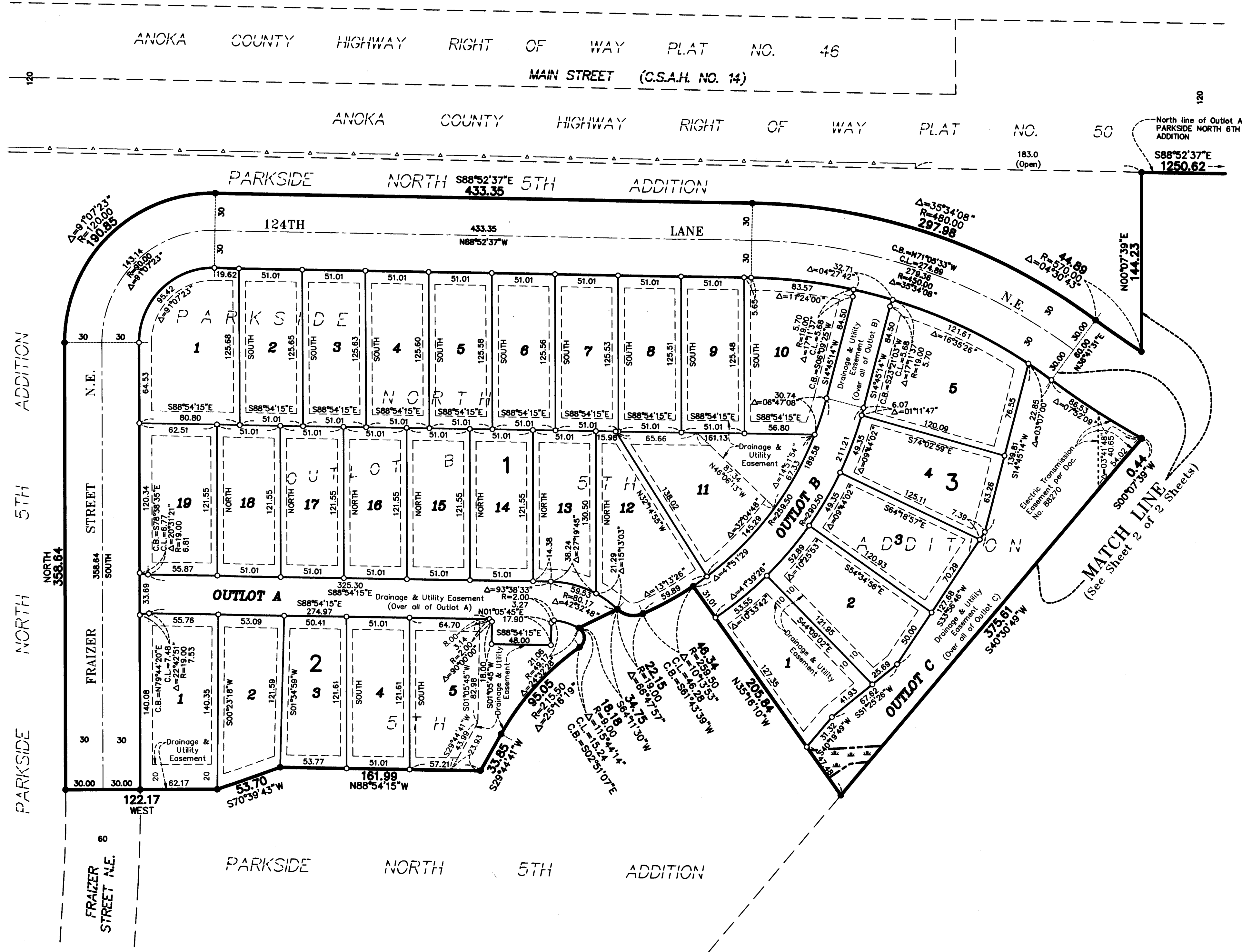
COUNTY RECORDER/REGISTRAR OF TITLES

County of Anoka, State of Minnesota

I hereby certify that this plat of PARKSIDE NORTH 7TH ADDITION was filed in the office of the County Recorder/Registrar of Titles for public record on this 7<sup>th</sup> day of MARCH, 2017, at 1:13 o'clock P.M. and was duly recorded in Book 22 TORN Page 46, as Document Number 546642.002

By: *Jonell M. Sawyer*  
Jonell M. Sawyer  
County Recorder/Registrar of Titles  
By: *J. Peterson* Deputy

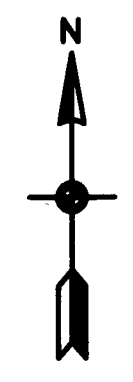
\$5600



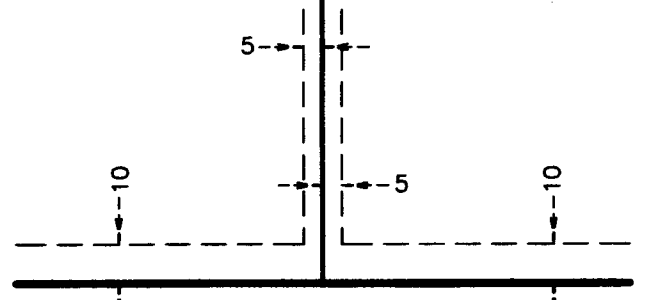
- Denotes Found Iron Monument
- Denotes 1/2 inch by 14 inch iron monument set or to be set within one year of recording of this plat and marked with license number 40361
- ▲— Denotes Right of Access dedicated to Anoka County per the plat of PARKSIDE NORTH
- ▭ Denotes Wetlands that were delineated by Kjelhaug Environmental Services in 2013.

For the purpose of this plat, the North line of Outlot A, PARKSIDE NORTH 6TH ADDITION is assumed to bear South 88 degree 52 minutes 37 seconds East.

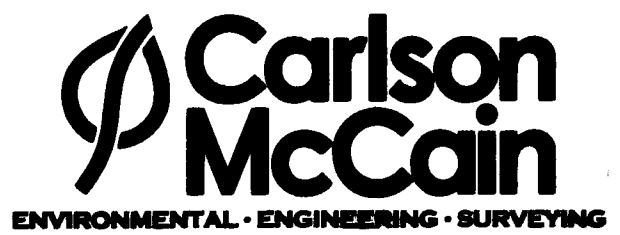
GRAPHIC SCALE  
0 25 50 100  
(SCALE IN FEET)  
1 INCH = 50 FEET



DRAINAGE AND UTILITY EASEMENTS ARE SHOWN THUS:



being 5 feet in width, and adjoining side lot lines, and 10 feet in width and adjoining right of way lines, outlet lines, and rear lot lines unless otherwise shown on this plat.



# PARKSIDE NORTH 7TH ADDITION

CITY OF BLAINE  
COUNTY OF ANOKA  
SEC. 12, TWP. 31, RGE. 23  
Book 22 Joins Page 4b

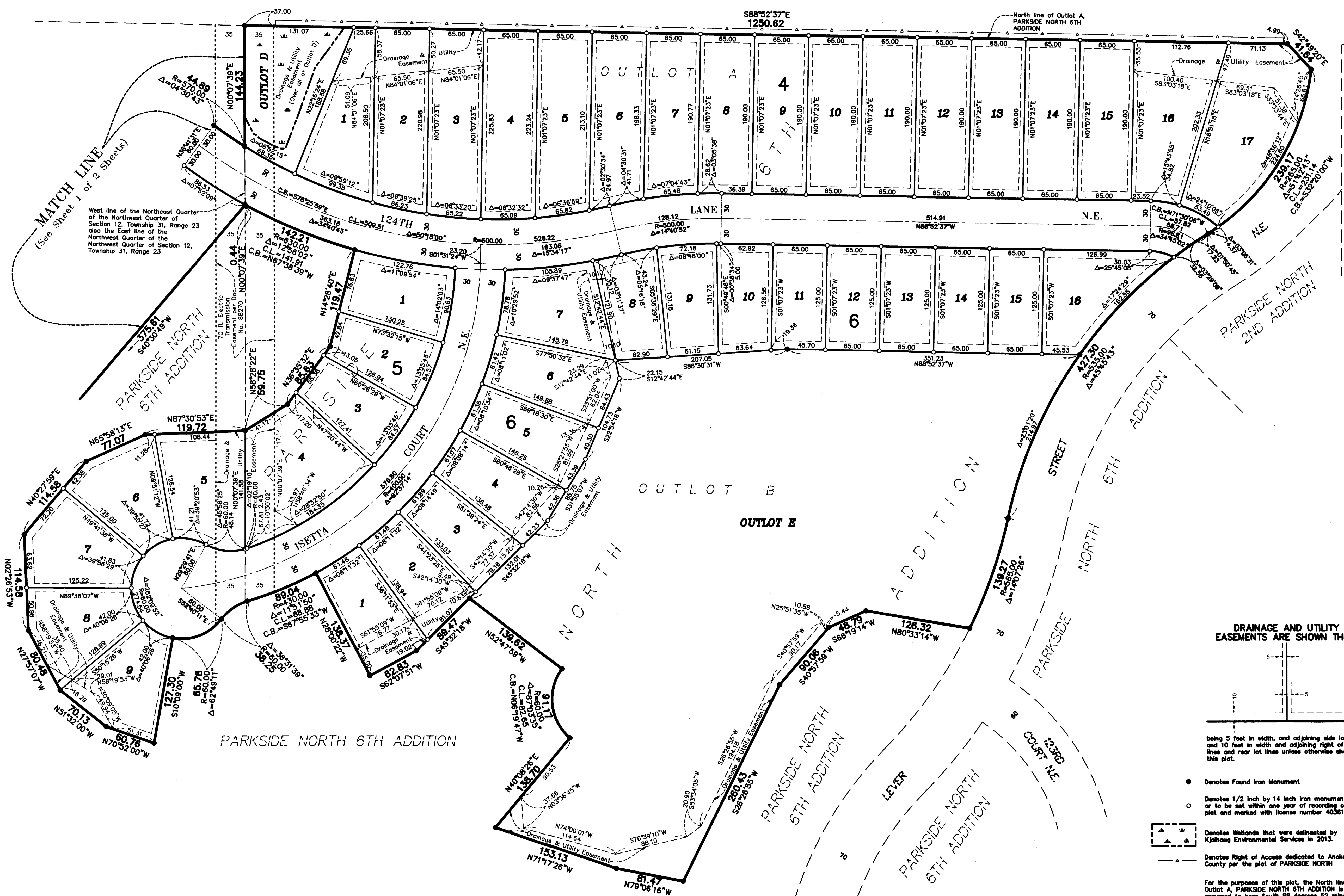
LEVER  
ST. N.E.

120

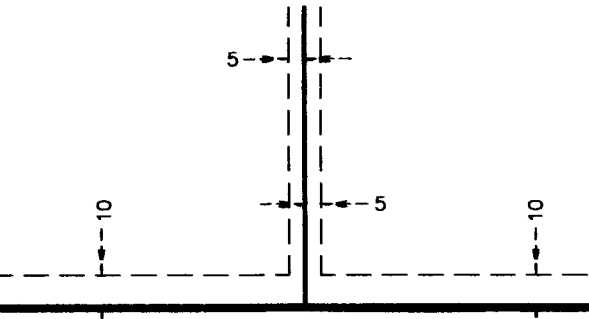
MAIN STREET (C.S.A.H. NO. 14)

ANOKA COUNTY HIGHWAY RIGHT OF WAY PLAT NO. 50

120

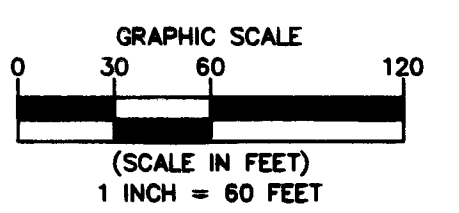
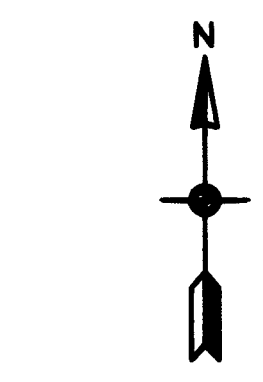


DRAINAGE AND UTILITY EASEMENTS ARE SHOWN THUS:



being 5 feet in width, and adjoining side lot lines, and 10 feet in width and adjoining right of way lines and rear lot lines unless otherwise shown on this plat.

- Denotes Found Iron Monument
- Denotes 1/2 inch by 14 inch iron monument set or to be set within one year of recording of this plat and marked with license number 40361
- ▭ Denotes Wetlands that were delineated by Kjolhaug Environmental Services in 2013.
- △ Denotes Right of Access dedicated to Anoka County per the plat of PARKSIDE NORTH



For the purpose of this plat, the North line of Outlet A, PARKSIDE NORTH 6TH ADDITION is assumed to bear South 88 degrees 52 minutes 37 seconds East.

