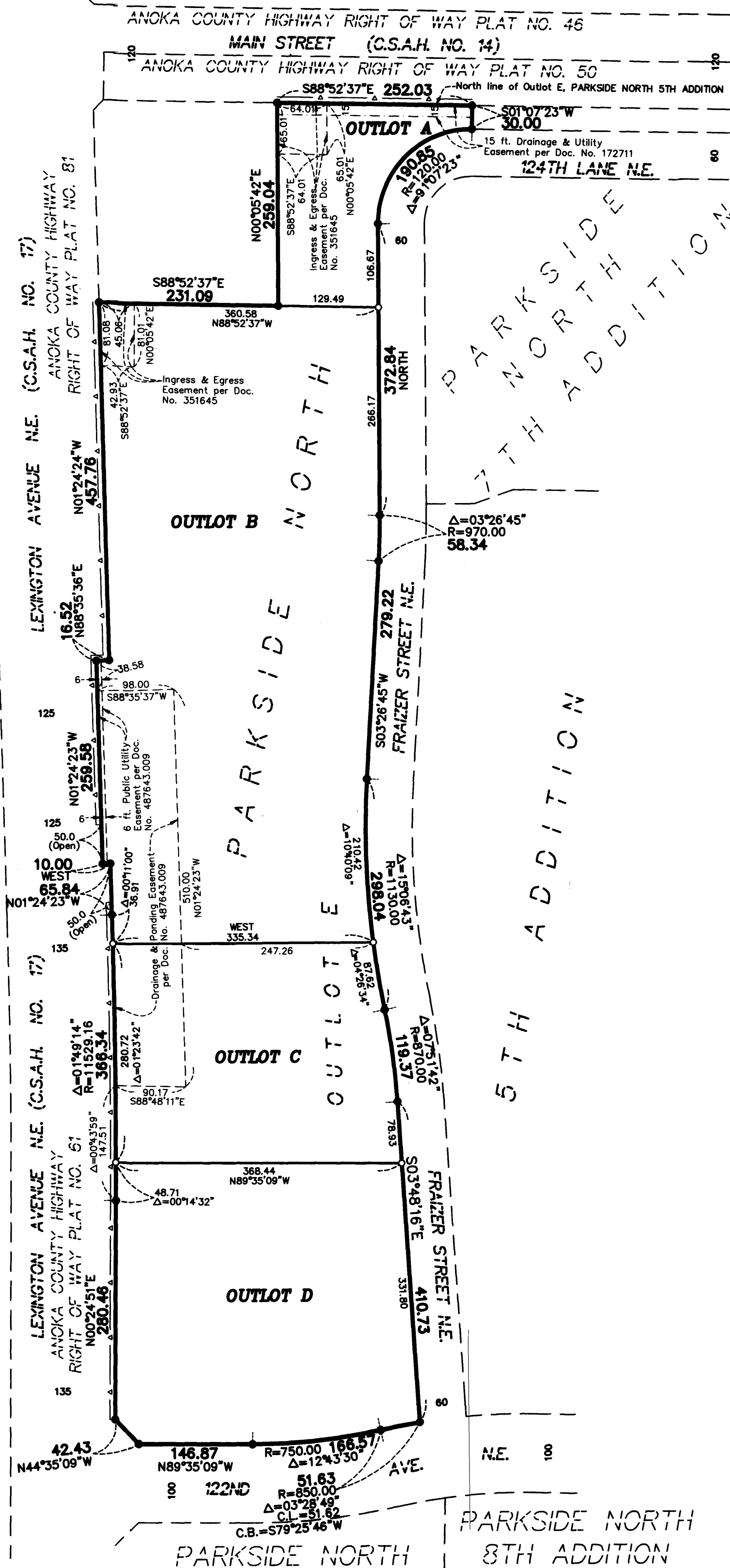


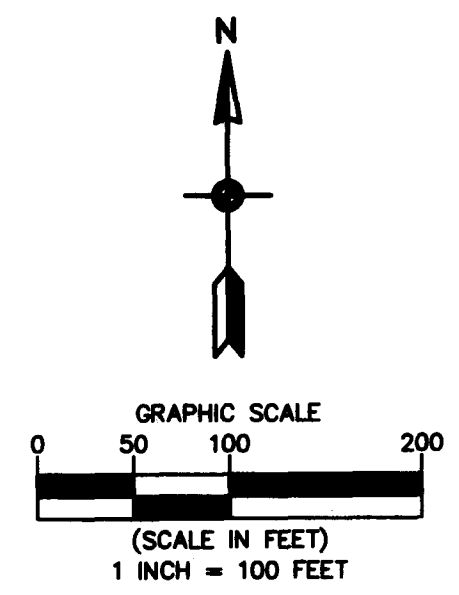
PARKSIDE NORTH 9TH ADDITION

Plat Book 22 of Towns Page 49 CITY OF BLAINE
COUNTY OF ANOKA
SEC. 12, TWP. 31, RGE. 23



For the purposes of this plat, the North line of Outlot E, PARKSIDE NORTH 5TH ADDITION is assumed to have a bearing of South 88 degrees 52 minutes 37 seconds East.

- Denotes 5/8 inch by 14 inch rebar set or to be set within one year of recording of this plat and marked with license number 40361
- Denotes Found Iron Monument unless otherwise noted
- ▲ Denotes Right of Access dedicated to Anoka County per the Plat of PARKSIDE NORTH



KNOW ALL PERSONS BY THESE PRESENTS: That Parkside North, LLC, a Minnesota limited liability company, owner of the following described property:
Outlot E, PARKSIDE NORTH 5TH ADDITION, according to the recorded plat thereof, Anoka County, Minnesota
Has caused the same to be surveyed and platted as PARKSIDE NORTH 9TH ADDITION.

In witness whereof said Parkside North, LLC, a Minnesota limited liability company, has caused these presents to be signed by its proper officer this 24th day of Feb 2017.

PARKSIDE NORTH, LLC
Kent A. Roessler
Kent A. Roessler, Chief Manager

STATE OF MINNESOTA
COUNTY OF ANOKA
This instrument was acknowledged before me on FEBRUARY 24, 2017 by Kent A. Roessler, Chief Manager of Parkside North, LLC, a Minnesota limited liability company.

Pamela A. Proceak
Notary Public, HENNEPIN COUNTY, MN
My commission expires 1-31-2020

I, Thomas R. Balluff do hereby certify that this plat was prepared by me or under my direct supervision; that I am a duly Licensed Land Surveyor in the State of Minnesota; that this plat is a correct representation of the boundary survey; that all mathematical data and labels are correctly designated on this plat; that all monuments depicted on this plat have been, or will be correctly set within one year; that all water boundaries and wet lands, as defined in Minnesota Statutes, Section 505.01, Subd. 3, as of the date of this certificate are shown and labeled on this plat; and all public ways are shown and labeled on this plat.

Dated this 21st day of FEBRUARY, 2017.
Thomas R. Balluff
Thomas R. Balluff, Licensed Land Surveyor
Minnesota License No. 40361

STATE OF Minnesota
COUNTY OF Anoka
This instrument was acknowledged before me on February 21, 2017 by Thomas R. Balluff.

Cynthia J. Morical
Notary Public, Hennepin County, MN
My commission expires January 31, 2020

CITY COUNCIL, CITY OF BLAINE, MINNESOTA
This plat of PARKSIDE NORTH 9TH ADDITION was approved and accepted by the City Council of the City of Blaine, Minnesota at a regular meeting thereof held this 16th day of February, 2017, and said plat is in compliance with the provisions of Minnesota Statutes, Section 505.03, Subd. 2.

CITY COUNCIL, CITY OF BLAINE, MINNESOTA
By Tom Keger Mayor
By Colleen Johnson Clerk

COUNTY SURVEYOR
I hereby certify that in accordance with Minnesota Statutes, Section 505.021, Subd. 11, this plat has been reviewed and approved this 22nd day of March, 2017.

By Larry D. Holm
Larry D. Holm, Anoka County Surveyor

COUNTY AUDITOR/TREASURER
Pursuant to Minnesota Statutes, Section 505.021, Subd. 9, taxes payable in the year 2017 on the land hereinbefore described have been paid. Also, pursuant to Minnesota Statutes, Section 272.12, there are no delinquent taxes and transfer entered this 22nd day of March, 2017.

Jonell M. Sauker
Property Tax Administrator
By Christina Deputy

COUNTY RECORDER/REGISTRAR OF TITLES
County of Anoka, State of Minnesota
I hereby certify that this plat of PARKSIDE NORTH 9TH ADDITION was filed in the office of the County Recorder/Registrar of Titles for public record on this 22nd day of March, 2017, at 2:00 o'clock P.M. and was duly recorded in Book 22 of Towns Page 49 as Document Number 2017022001

Jonell M. Sauker
County Recorder/Registrar of Titles
By Christina Deputy