

# PARKSIDE NORTH

KNOW ALL PERSONS BY THESE PRESENTS: That KR Farm Land Holdings, LLC, a Minnesota limited liability company, owner of the following described property:

The Southeast Quarter of the Northwest Quarter, the Southwest Quarter of the Northwest Quarter EXCEPT the South 600 feet thereof, the Northwest Quarter of the Northwest Quarter EXCEPT the North 319 feet of the West 316 feet thereof and EXCEPT Parcel 17, ANOKA COUNTY HIGHWAY RIGHT-OF-WAY PLAT NO. 81, the Northeast Quarter of the Northwest Quarter, all in Section 12, Township 31, Range 23, EXCEPT Parcels 34 and 35, ANOKA COUNTY HIGHWAY RIGHT-OF-WAY PLAT NO. 61 and EXCEPT Parcel 8, ANOKA COUNTY HIGHWAY RIGHT-OF-WAY PLAT NO. 50.

AND

TRACT B, R.L.S NO. 260, Anoka County, Minnesota.

Has caused the same to be surveyed and platted as PARKSIDE NORTH and does hereby dedicate to the public for public use the public ways and the drainage and utility easements as created by this plat. Also dedicating to the County of Anoka the right of access onto County State Aid Highway No. 14 and County State Aid Highway No. 17 as shown on this plat.

In witness whereof said KR Farm Land Holdings, LLC, a Minnesota limited liability company, has caused these presents to be signed by its proper officer this 7<sup>th</sup> day of April, 2015.

KR Farm Land Holdings, LLC

Kent A. Roessler, Chief Manager  
Kent A. Roessler, Chief Manager

STATE OF Minnesota  
COUNTY OF Anoka

This instrument was acknowledged before me on April 7<sup>th</sup>, 2015 by Kent A. Roessler, Chief Manager of KR Farm Land Holdings, LLC, a Minnesota limited liability company.

Brittany Rae Fedder  
Brittany Rae Fedder  
Notary Public, Minnesota  
My commission expires January 31<sup>st</sup>, 2017

I Thomas R. Balluff do hereby certify that this plat was prepared by me or under my direct supervision; that I am a duly Licensed Land Surveyor in the State of Minnesota; that this plat is a correct representation of the boundary survey; that all mathematical data and labels are correctly designated on this plat; that all monuments depicted on this plat have been, or will be correctly set within one year; that all water boundaries and wet lands, as defined in Minnesota Statutes, Section 505.01, Subd. 3, as of the date of this certificate are shown and labeled on this plat; and all public ways are shown and labeled on this plat.

Dated this 26<sup>th</sup> day of MARCH, 2015.

Thomas R. Balluff  
Thomas R. Balluff, Licensed Land Surveyor  
Minnesota License No. 40361

STATE OF Minnesota  
COUNTY OF Anoka

This instrument was acknowledged before me on March 26, 2015 by Thomas R. Balluff.

Cynthia J. Morical  
Cynthia J. Morical  
Notary Public, Hennepin County  
My commission expires January 31, 2020

CITY COUNCIL, CITY OF BLAINE, MINNESOTA

This plat of PARKSIDE NORTH was approved and accepted by the City Council of the City of Blaine, Minnesota at a regular meeting thereof held this 19<sup>th</sup> day of February, 2015, and said plat is in compliance with the provisions of Minnesota Statutes, Section 505.03, Subd. 2.

CITY COUNCIL, CITY OF BLAINE, MINNESOTA

By: Sam Ryan, Mayor By: Thomas Balluff, Clerk

COUNTY SURVEYOR

I hereby certify that in accordance with Minnesota Statutes, Section 505.021, Subd. 11, this plat has been reviewed and approved this 24<sup>th</sup> day of APRIL, 2015.

By: Larry D. Hoium  
Larry D. Hoium, Anoka County Surveyor

COUNTY AUDITOR/TREASURER

Pursuant to Minnesota Statutes, Section 505.021, Subd. 9, taxes payable in the year 2015 on the land hereinbefore described have been paid. Also, pursuant to Minnesota Statutes, Section 272.12, there are no delinquent taxes and transfer entered this 24 day of April, 2015.

Jonell M Sawyer  
Property Tax Administrator  
By \_\_\_\_\_, Deputy

COUNTY RECORDER/REGISTRAR OF TITLES

County of Anoka, State of Minnesota

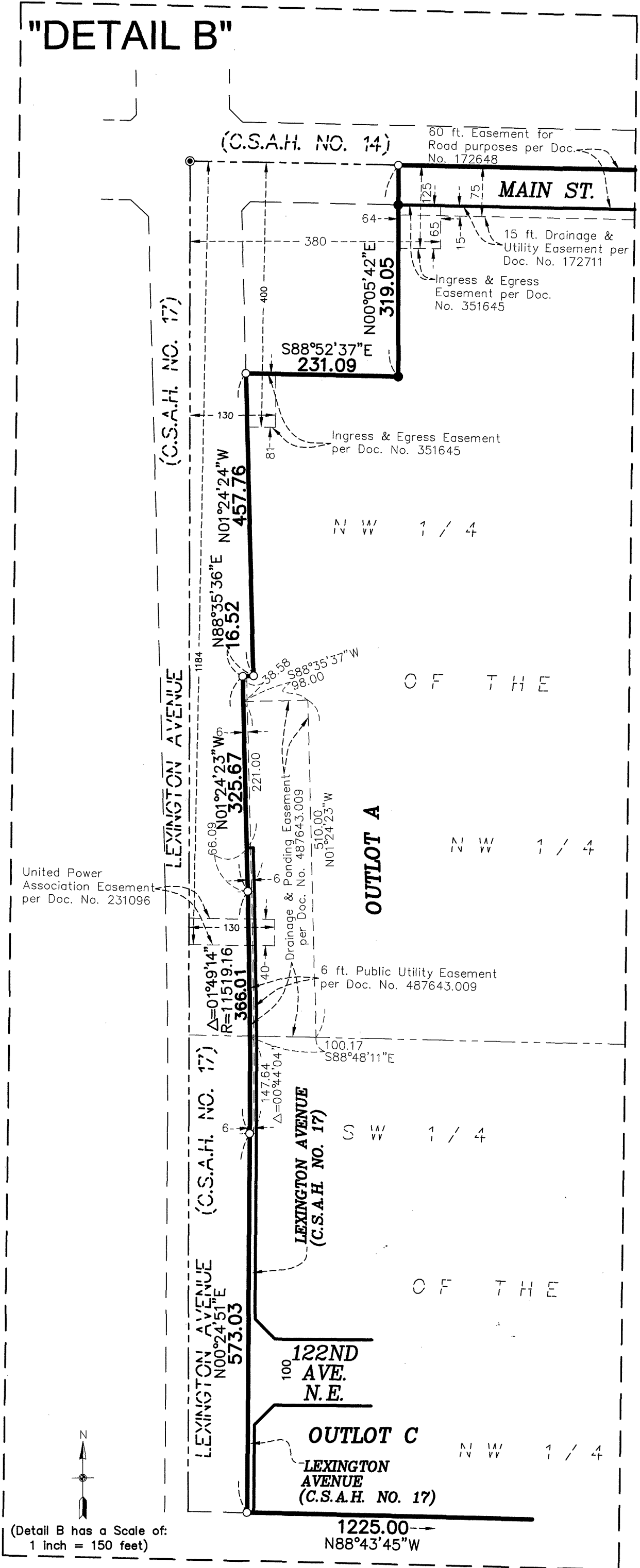
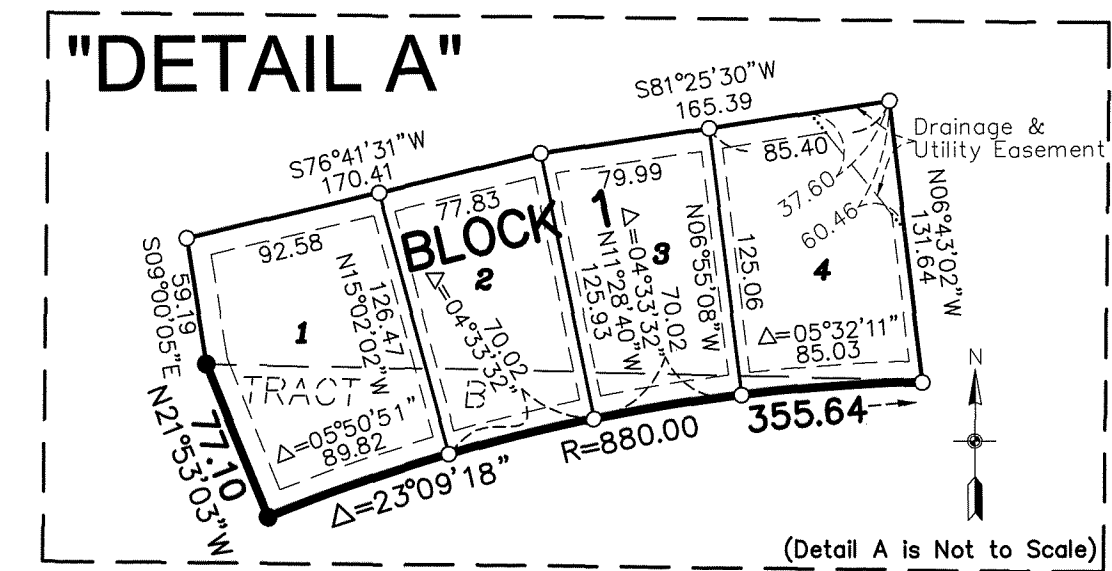
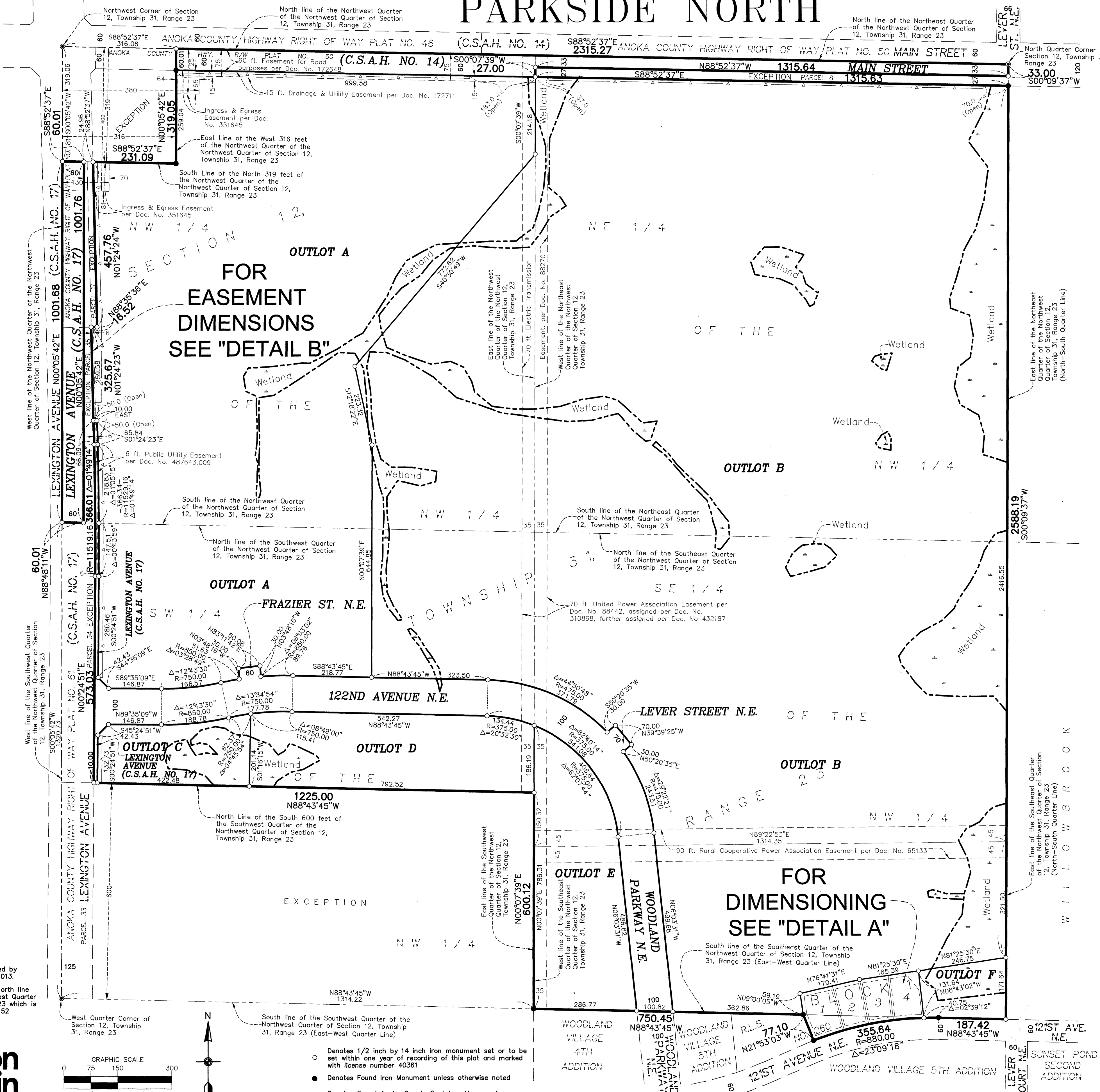
I hereby certify that this plat of PARKSIDE NORTH was filed in the office of the County Recorder/Registrar of Titles for public record on this 24 day of April, 2015, at 12:31 o'clock P.M. and was duly recorded in Book 22 TORN Page 16, as Document Number 530001.001.

Jonell M Sawyer  
County Recorder/Registrar of Titles  
By CCT, Deputy

\$50.00



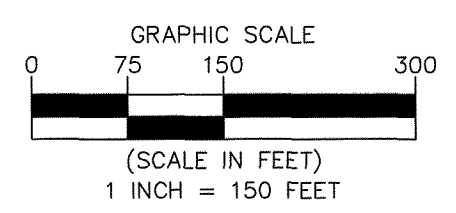
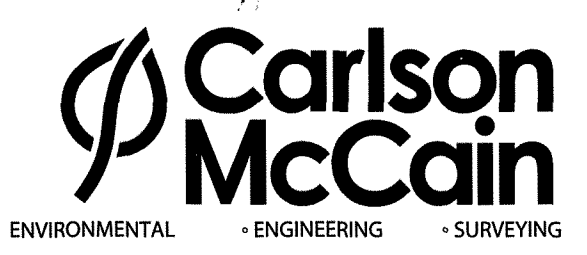
# PARKSIDE NORTH



FOR  
EASEMENT  
DIMENSIONS  
SEE "DETAIL B"

FOR  
DIMENSIONING  
SEE "DETAIL A"

Note: Wetlands shown were delineated by Kjøhaug Environmental Services in 2013.  
For the purposes of this plat, the North line of Northwest Quarter of the Northwest Quarter of Section 12, Township 31, Range 23 which is assumed to bear South 88 degrees 52 minutes 37 seconds East.



- Denotes 1/2 Inch by 14 Inch Iron monument set or to be set within one year of recording of this plat and marked with license number 40361
- Denotes Found Iron Monument unless otherwise noted
- ⊙ Denotes Found Anoka County Cast Iron Monument
- △ Denotes Right of Access dedicated to Anoka County