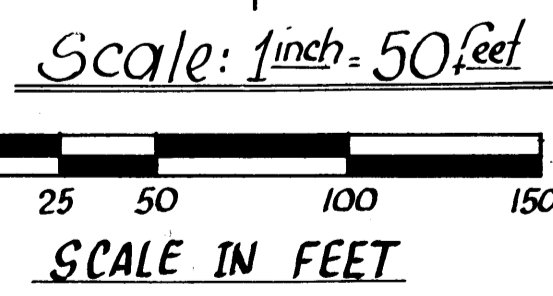
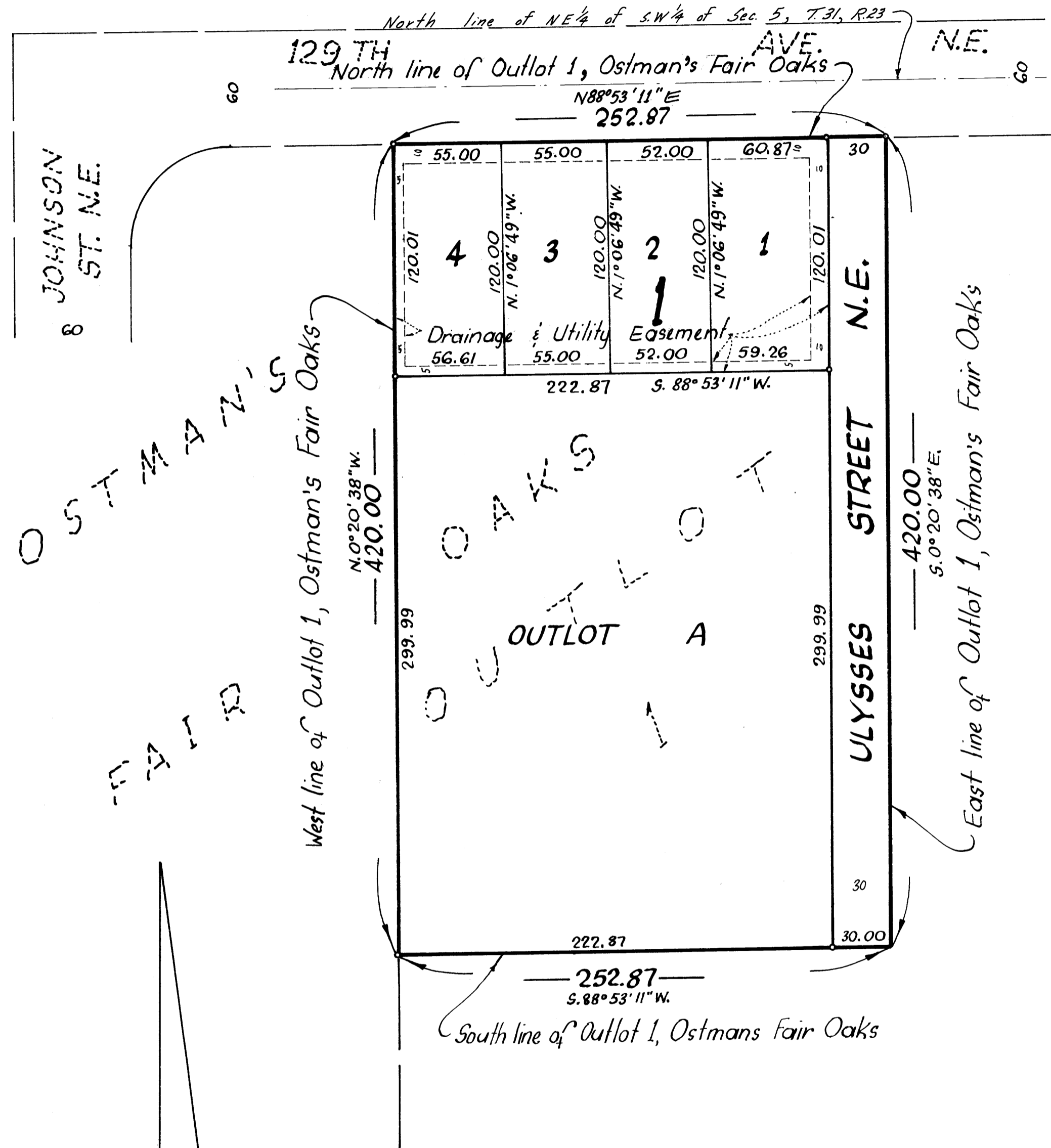


PETERSON ESTATES 1ST ADDITION

CITY OF BLAINE

COUNTY OF ANOKA



JANUARY, 1985

For purposes of this plat, the east line of Outlot 1, Ostmans Fair Oaks has an assumed bearing of S. 0° 20' 38" E.

• Denotes iron monument

Suburban Engineering, Inc.

—Engineers—
—Surveyors—

KNOW ALL MEN BY THESE PRESENTS: That Bjergo Ondracek Partnership, a partnership under the laws of the State of Minnesota consisting of Roy Bjergo and Jacqueline M. Ondracek, owner and proprietor of the following described property situated in the County of Anoka, State of Minnesota to wit:

Outlot 1, Ostmans Fair Oaks, according to the recorded plat thereof, Anoka County, Minnesota.

has caused the same to be surveyed and platted as PETERSON ESTATES 1ST ADDITION and does hereby donate and dedicate to the public for public use forever the street and drainage and utility easements as shown on this plat. In witness whereof said Bjergo Ondracek Partnership has caused these presents to be signed by Roy Bjergo and Jacqueline M. Ondracek, partners, this 22nd day of April, 1985.

BJERGO ONDRACEK PARTNERSHIP

Roy Bjergo (Partner) Jacqueline M. Ondracek (Partner)
Roy Bjergo, partner Jacqueline M. Ondracek, partner

STATE OF MINNESOTA The foregoing instrument was acknowledged before me this 22nd day of April, 1985 by Roy Bjergo, partner and Jacqueline M. Ondracek, partner of Bjergo Ondracek Partnership, partnership under the laws of the State of Minnesota, on behalf of said partnership.

James L. Wegner
Notary Public, Hennepin County, Minnesota
My Commission Expires November 6, 1990

I hereby certify that I have surveyed and platted the property described on this plat as PETERSON ESTATES 1ST ADDITION; that this plat is a correct representation of said survey; that all distances are correctly shown on the plat in feet and hundredths of a foot; that all monuments have been correctly placed in the ground as shown on said plat; that the outside boundary lines are correctly designated on said plat, and that there are no wet lands or public highways to be designated on said plat other than as shown thereon.

Howard W. Rogers
Howard W. Rogers, Land Surveyor
Minnesota Registration No. 10945

STATE OF MINNESOTA
COUNTY OF ANOKA

The following instrument was acknowledged before me this 17th day of April, 1985 by Howard W. Rogers, Land Surveyor.

Barbara I. Ohtelje
Notary Public, Anoka County, Minnesota
My Commission Expires May 6, 1991

We hereby certify that the City Council of the City of Blaine, duly accepted and approved the plat of PETERSON ESTATES 1ST ADDITION at a regular meeting thereof held this 2nd day of May, 1985.

CITY COUNCIL OF BLAINE, MINNESOTA
By Thomas Brogarty Mayor
By Richard P. Johnson City Manager

Checked and approved this 8th day of August, 1985.

Roland W. Anderson
Anoka County Surveyor

"NO DELINQUENT TAXES
AND TRANSFER ENTERED"
Aug 8th 1985
Charles P. Moore
Auditor, Anoka County

HEREBY CERTIFY THAT THE TAXES
PAYABLE IN THE YEAR 1985 ON THE
LANDS DESCRIBED WERE PAID
Donald C. Barclay
Anoka County Treasurer
J. Henry - Deputy

143960

STATE OF MINNESOTA
COUNTY OF ANOKA

RECORDED

INDEXED

FILED