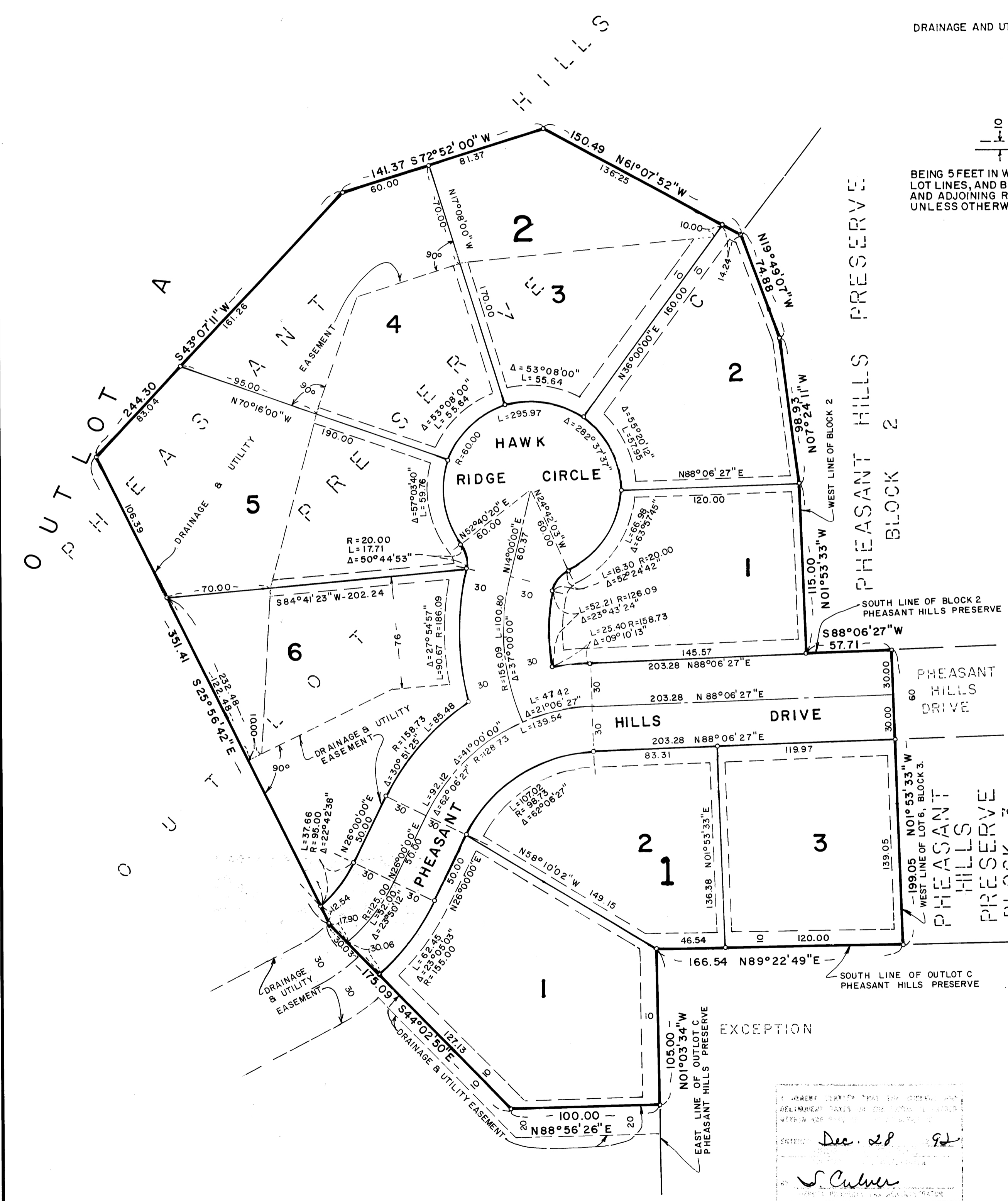
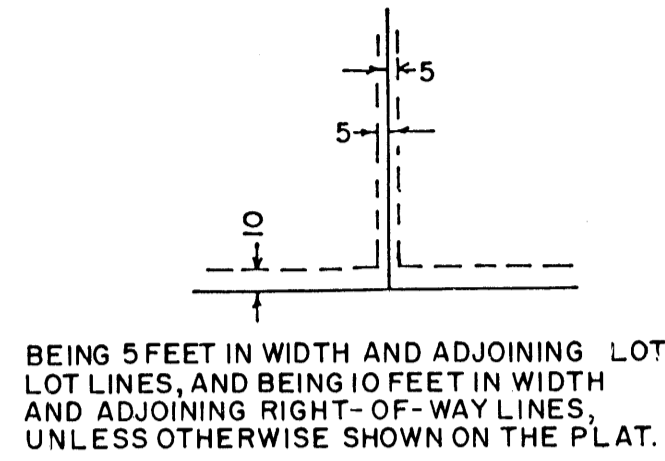


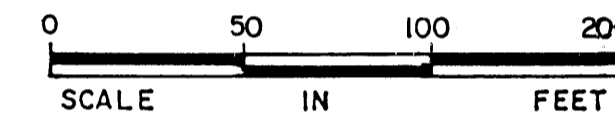
PHEASANT HILLS PRESERVE 2ND ADDITION



DRAINAGE AND UTILITY EASEMENTS ARE SHOWN THUS:



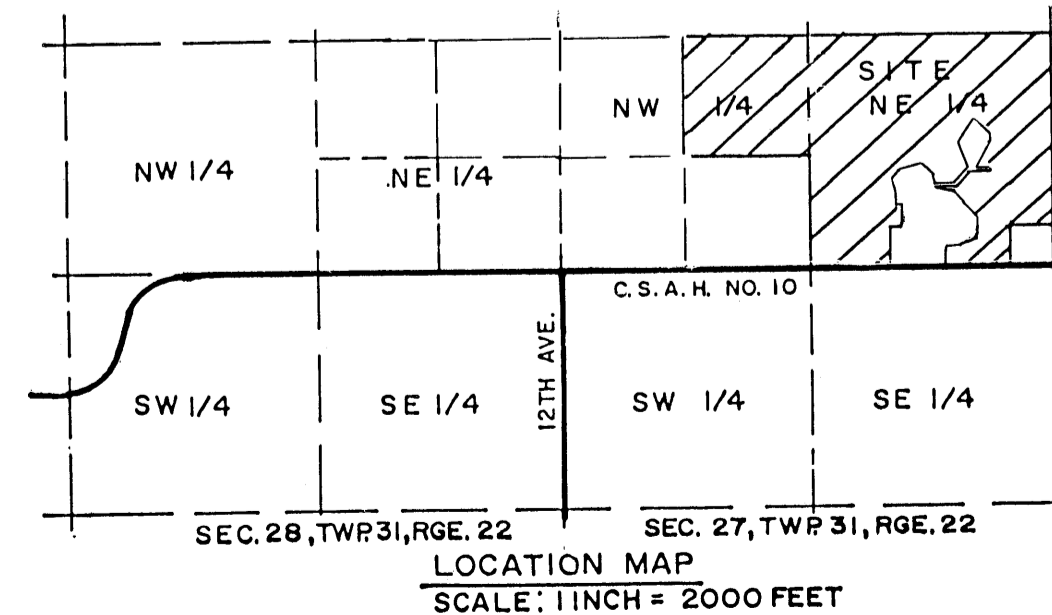
FOR THE PURPOSE OF THIS PLAT THE SOUTH LINE OF THE N 1/2 OF SECTION 27, T 31, R 22 IS ASSUMED TO BEAR N 89° 22' 49" E.



SCALE: 1 INCH = 50 FEET

○ DENOTES IRON MONUMENT SET WITH CAP STAMPED RLS 14889

1014822
 OFFICE OF COUNTY RECORDER
 STATE OF MINNESOTA COUNTY OF ANOKA
 I hereby certify that the within instrument was filed in this office for record on the DEC. 28, 1992 at 3:45 o'clock P. and was duly recorded in book 46 of PLATS 5
 By Red J. Andall County Recorder
AD Anderson Deputy



KNOW ALL MEN BY THESE PRESENTS: That Edward E. Vaughan and Delores E. Vaughan, aka Edward E. Vaughn and Delores E. Vaughn, husband and wife, owners and proprietors and The First State Bank of Wyoming, a Minnesota corporation, mortgagee, of the following described property situated in the County of Anoka, State of Minnesota, to wit:

Outlot C, PHEASANT HILLS PRESERVE

have caused the same to be surveyed and platted as PHEASANT HILLS PRESERVE 2ND ADDITION and do hereby donate and dedicate to the public for public use forever the drive, the circle, and the easements for drainage and utility purposes only.

In witness whereof said Edward E. Vaughan and Delores E. Vaughan, aka Edward E. Vaughn and Delores E. Vaughn, husband and wife, have hereunto set their hands this 17 day of August, 1992

Edward E. Vaughan Delores E. Vaughan
 Edward E. Vaughan Delores E. Vaughan
 aka Edward E. Vaughn aka Delores E. Vaughn

STATE OF MINNESOTA
COUNTY OF Chicago

The foregoing instrument was acknowledged before me this 17 day of August, 1992, by Edward E. Vaughan and Delores E. Vaughn, aka Edward E. Vaughn and Delores E. Vaughn, husband and wife.

Beatrice Zaruba
 NOTARY PUBLIC-MINNESOTA
 CHISAGO COUNTY
 My Comm. Expires May 18, 1998

Beatrice Zaruba
 Notary Public, Chicago County, Minnesota
 My Commission expires _____

In witness whereof said First State Bank of Wyoming, a Minnesota corporation, has caused these presents to be signed by its proper officers this 17 day of August, 1992

THE FIRST STATE BANK OF WYOMING

By Ma Zaruba
M. A. Zaruba, its Executive Vice President

By Ed Anderson
Ed Anderson, its Vice President

STATE OF MINNESOTA
COUNTY OF Chicago

The foregoing instrument was acknowledged before me this 17 day of August, 1992, by M. A. Zaruba its Executive Vice President and Ed Anderson its Vice President of The First State Bank of Wyoming a Minnesota corporation, on behalf of the corporation.

Beatrice Zaruba
 NOTARY PUBLIC-MINNESOTA
 CHISAGO COUNTY
 My Comm. Expires May 18, 1998

Beatrice Zaruba
 Notary Public, Chicago County, Minnesota
 My Commission expires _____

I hereby certify that I have surveyed and platted the property described on this plat as PHEASANT HILLS PRESERVE 2ND ADDITION; that this plat is a correct representation of said survey; that all distances are correctly shown on the plat in feet and hundredths of a foot; that all monuments have been correctly placed in the ground as shown on said plat or will be placed as required by the local governmental unit; that the outside boundary lines are correctly designated on the plat and that there are no wetlands or public highways to be designated on said plat other than as shown.

Walter J. Gregory
 Walter J. Gregory, Land Surveyor
 Minnesota License No. 14889

STATE OF MINNESOTA
COUNTY OF HENNEPIN

The foregoing Surveyor's Certificate was acknowledged before me this 14th day of AUGUST, 1992 by Walter J. Gregory, Land Surveyor.

Walter J. Gregory
 Notary Public, Hennepin County, Minnesota
 My Commission expires 2-12-97

LINO LAKES, MINNESOTA

This plat of PHEASANT HILLS PRESERVE 2ND ADDITION was approved and accepted by the City Council of Lino Lakes, Minnesota, at a regular meeting thereof held this 24th day of September, A.D., 1992. If applicable, the written comments and recommendations of the Commissioner of Transportation and the County Highway Engineer have been received by the City or the prescribed 30 day period has elapsed without receipt of such comments and recommendations, as provided by Minnesota Statutes, Section 505.060 Subd. 2.

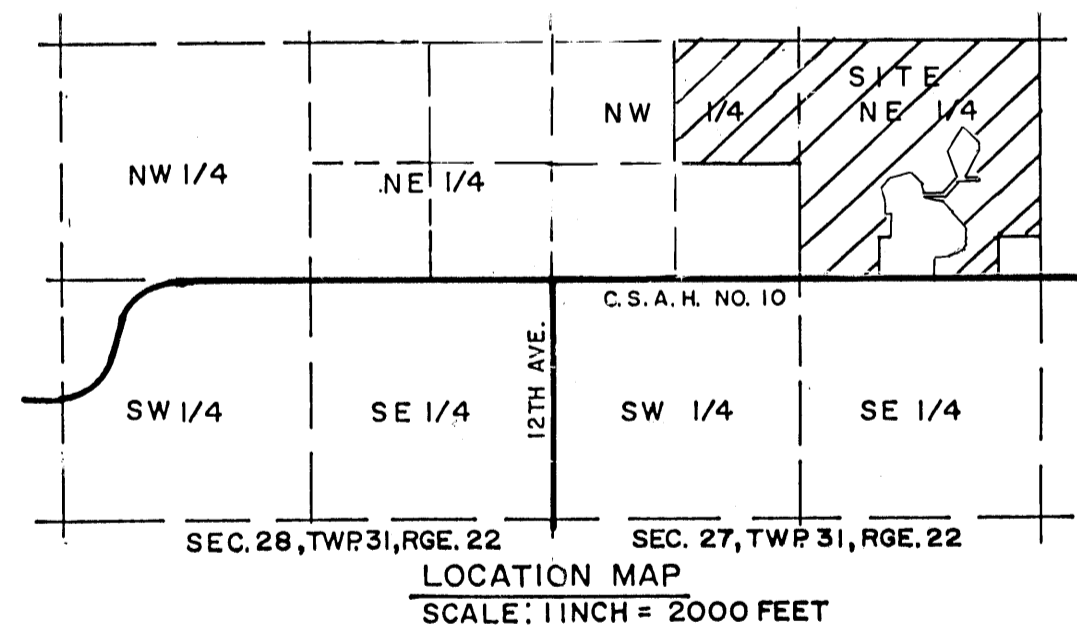
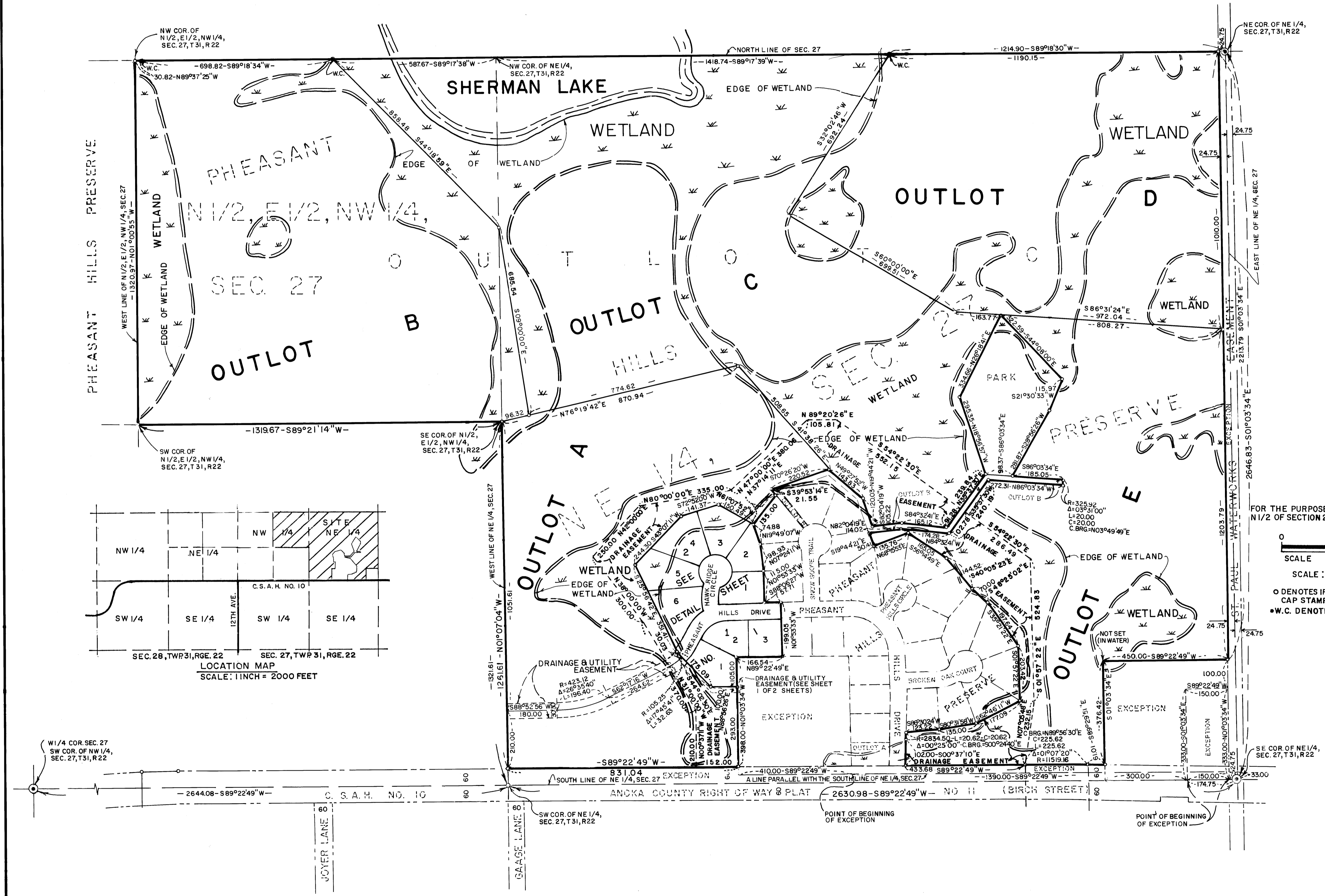
CITY COUNCIL OF LINO LAKES, MINNESOTA
 By Walter J. Gregory Mayor
 By Robert Schumacher City Administrator

This plat has been checked and approved this 28th day of Dec., 1992

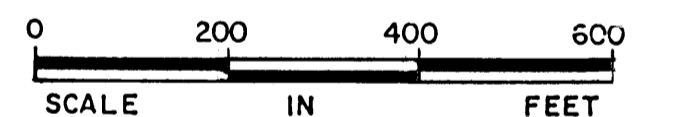
Merlyn D. Anderson by Harry D. Johnson
 Merlyn D. Anderson Harry D. Johnson
 Anoka County Surveyor deputy



PHEASANT HILLS PRESERVE 2ND ADDITION



FOR THE PURPOSE OF THIS PLAT THE SOUTH LINE OF THE NE 1/2 OF SECTION 27, T31, R22 IS ASSUMED TO BEAR $N89^{\circ}22'49''E$



SCALE: 1 INCH = 200 FEET

- O DENOTES IRON MONUMENT SET WITH CAP STAMPED RLS 14889
- W.C. DENOTES WITNESS CORNER

