

PHEASANT MEADOWS

CITY OF ANDOVER COUNTY OF ANOKA

KNOW ALL PERSONS BY THESE PRESENTS: That Donald G. Boeke and Marion V. Boeke, husband and wife, owners and proprietors, and Hokanson Development, Inc., a Minnesota Corporation, contract purchaser of the following described property situated in the County of Anoka, State of Minnesota, to-wit:

Lot Six (6) of Watts Garden Acres, according to the plat thereof filed for record in the office of the Registrar of Titles in and for said County of Anoka and State of Minnesota.

Have caused the same to be surveyed and platted as PHEASANT MEADOWS and do hereby donate and dedicate to the public for public use forever the Lane and Streets as shown on the plat. Also dedicating the drainage and/or utility easements as shown on the plat. In witness whereof said Donald G. Boeke and Marion V. Boeke have hereunto set their hands this 27th day of August, 1992. Also in witness whereof said Hokanson Development, Inc., a Minnesota corporation, has caused these presents to be signed by its proper officers this 26th day of August, 1992.

SIGNED:

Donald G. Boeke
Donald G. Boeke

Marion V. Boeke
Marion V. Boeke

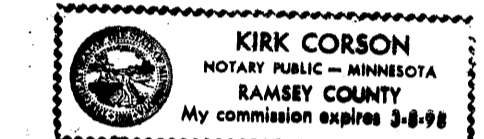
HOKANSON DEVELOPMENT, INC.

Roger A. Hokanson

its *Plan*, its

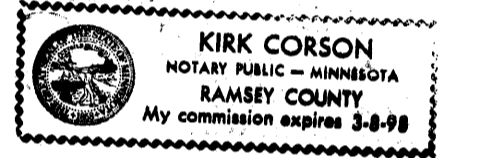
STATE OF MINNESOTA) The foregoing instrument was acknowledged before me this 27th day of August
COUNTY OF ANOKA) 1992, by Donald G. Boeke and Marion V. Boeke, husband and wife.

John Corson
Notary Public, Ramsey County, Minnesota
My Commission expires 3-8-98



STATE OF MINNESOTA) The foregoing instrument was acknowledged before me this 26th day of August
COUNTY OF ANOKA) 1992, by Roger A. Hokanson, as President of Hokanson Development, Inc., a Minnesota corporation, on behalf of the corporation.

John Corson
Notary Public, Ramsey County, Minnesota
My Commission expires 3-8-98

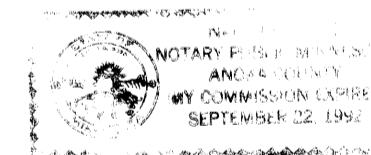


I hereby certify that I have surveyed and platted the land described in the dedication on this plat as PHEASANT MEADOWS; that the plat is a correct representation of said survey; that all distances are correctly shown on said plat in feet and hundredths of a foot; that the monuments have been correctly placed in the ground as shown; that the outside boundaries are correctly designated on said plat; and that there are no wet lands or public highways to be designated on said plat other than as shown thereon.

Jeffrey N. Caine
Jeffrey N. Caine, Registered Land Surveyor
Minnesota Registration No. 12251

STATE OF MINNESOTA) The surveyors certificate was acknowledged before me a Notary Public, this 9th day
COUNTY OF ANOKA) of August, 1992, by Jeffrey N. Caine, Land Surveyor.

Hannay A. Cairns
Notary Public, Anoka County, Minnesota
My Commission expires 9-22-92



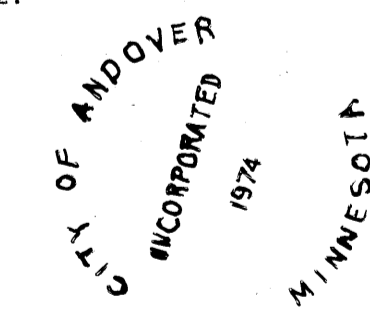
CITY OF ANDOVER

We hereby certify that the City Council of the City of Andover, Anoka County, Minnesota, duly accepted and approved the plat of PHEASANT MEADOWS at a regular meeting held this 9th day of August, 1992. If applicable, the written comments and recommendations of the Commissioner of Transportation and the County Highway Engineer have been received by the city or the prescribed 30 day period has elapsed without receipt of such comments and recommendations, as provided by Minn. Statutes, Section 505.03, Subd. 2.

By *David Dattl* Mayor By *Antonia Bell* Clerk

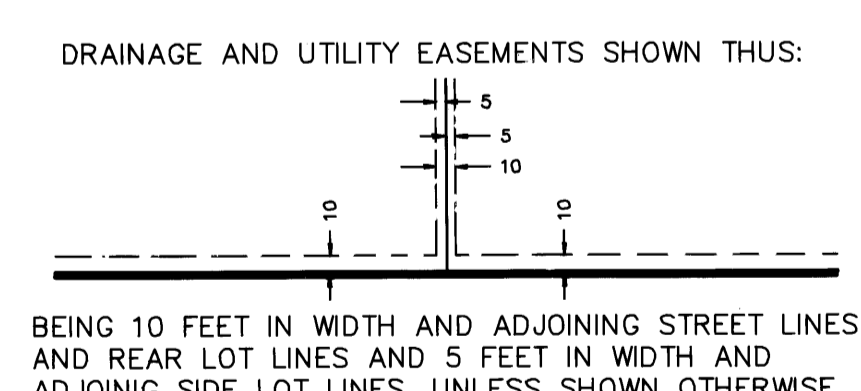
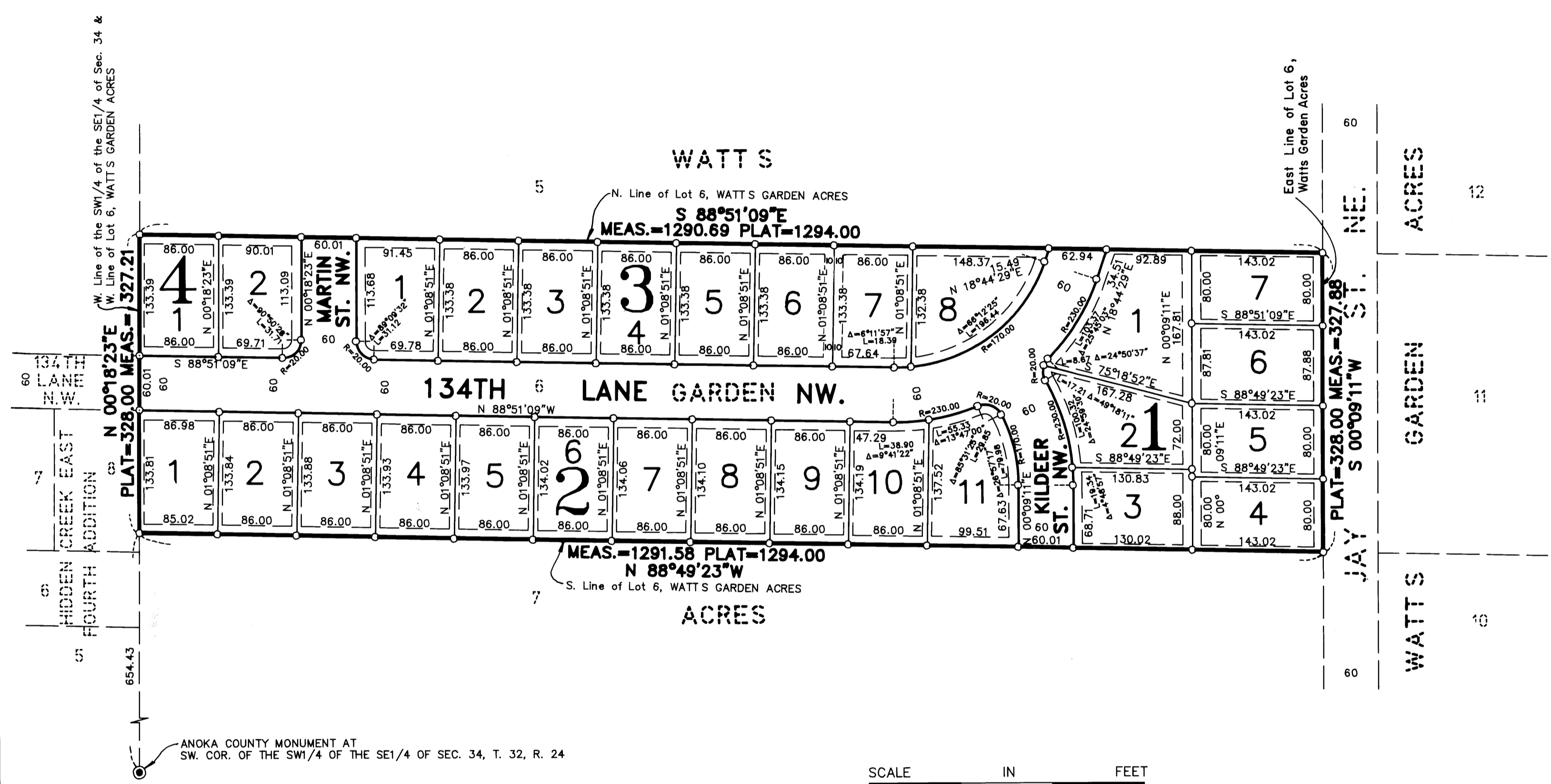
Checked and approved this 16th day of SEPT., 1992.

By *Meryl D. Anderson* by *Larry D. Nomin* deputy
Anoka County Surveyor

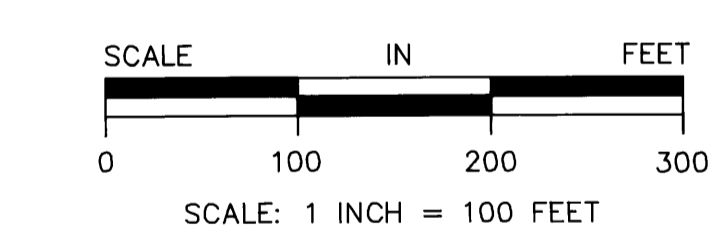


224194
Office of Registrar of Titles
STATE OF MINNESOTA
COUNTY OF ANOKA
I hereby certify that the within instrument was filed in this office on the 16th day of September, 1992 at 2:10 o'clock P.M.
Nancy Jackson
Deputy Registrar of Titles

I HEREBY CERTIFY THAT THE CURRENT AND DELINQUENT TAXES ON THE LANDS DESCRIBED WITHIN ARE PAID AND THE TRANSFER IS
ENTERED Sept. 16 1992
EDWARD M. TRESKA
PROPERTY TAX ADMINISTRATOR
BY *S. Culver*
DEPUTY PROPERTY TAX ADMINISTRATOR



BEING 10 FEET IN WIDTH AND ADJOINING STREET LINES AND REAR LOT LINES AND 5 FEET IN WIDTH AND ADJOINING SIDE LOT LINES, UNLESS SHOWN OTHERWISE.



○ DENOTES 1/2 INCH IRON PIPE SET.
○ DENOTES ANOKA COUNTY MONUMENT.
NOTE: FOR THE PURPOSES OF THIS PLAT, THE WEST LINE OF THE SW1/4 OF THE SE1/4 OF SEC. 34, T. 32, R. 24 IS ASSUMED TO BEAR N 00°18'23"E.

ANOKA COUNTY MONUMENT AT SW. COR. OF THE SW1/4 OF THE SE1/4 OF SEC. 34, T. 32, R. 24