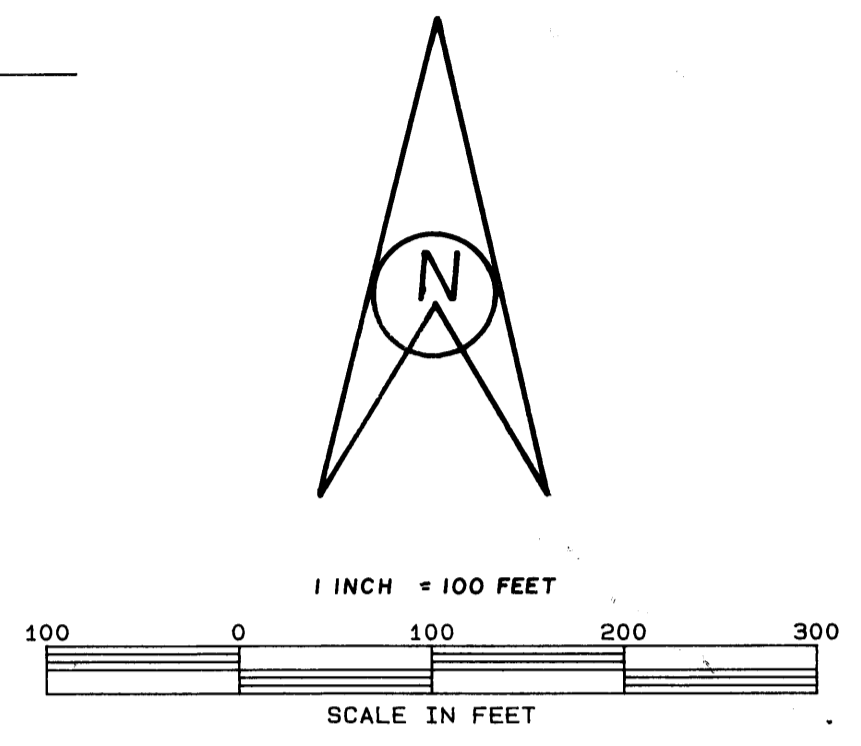
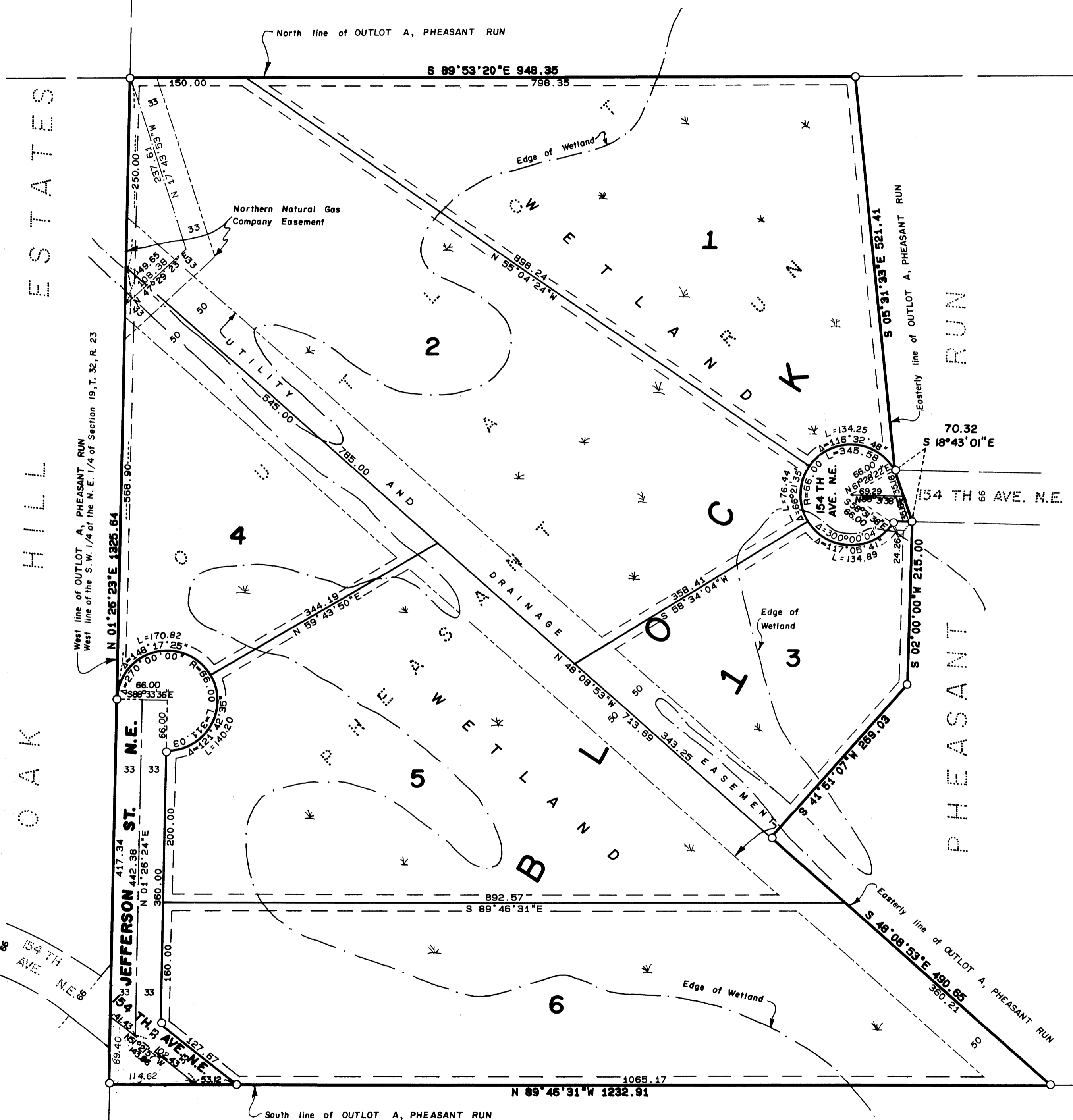


PHEASANT RUN SECOND ADDITION

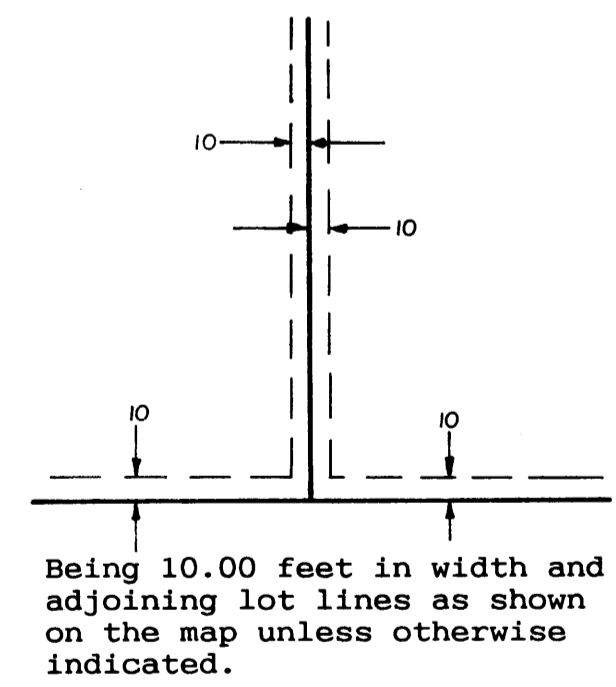
CITY OF HAM LAKE
COUNTY OF ANOKA



OTTO ASSOCIATES
Engineers & Land Surveyors, Inc.
Buffalo, Minnesota 682-4727

NOTE: The west line of OUTLOT A, PHEASANT RUN is assumed to bear North 01° 26' 23" East

Utility and Drainage Easements are shown thus:



KNOW ALL MEN BY THESE PRESENTS: That Good Time Attractions, Inc., a Minnesota Corporation, fee owner of the following described property situated in the County of Anoka, State of Minnesota, to wit:

Outlot A of PHEASANT RUN, according to the record plat thereof, Have caused the same to be surveyed and platted as PHEASANT RUN SECOND ADDITION and do hereby donate and dedicate to the public for public use forever the street, avenue and the easements for drainage and utility purposes only.

In witness whereof said Good Time Attractions, Inc., a Minnesota Corporation, has caused these presents to be signed by its President this 20th day of August, 1990.

GOOD TIME ATTRACTIONS, INC.
Lawrence Merhly
Lawrence Merhly, President

STATE OF MINNESOTA
COUNTY OF Anoka
The foregoing instrument was acknowledged before me this 20th day of August, 1990 by Lawrence Merhly, President of Good Time Attractions, Inc. a Minnesota Corporation, on behalf of said corporation.

PAMELA SCHULTZ
NOTARY PUBLIC - MINNESOTA
ANOKA COUNTY
My Commission Expires November 25, 1992

Pamela Schultz
Notary Public, Anoka County, Minnesota
My Commission Expires Nov. 25, 1992

I hereby certify that I have surveyed and platted the property described on this plat as PHEASANT RUN SECOND ADDITION; that this plat is a correct representation of the survey; that all distances are correctly shown on the plat in feet and hundredths of a foot; that all monuments have been correctly placed in the ground as shown; that the outside boundary lines are correctly designated on the plat and that there are no wet lands or public highways to be designated other than as shown.

Edward J. Otto
Edward J. Otto, Land Surveyor
Minnesota License Number 14343

STATE OF MINNESOTA
COUNTY OF WRIGHT
The foregoing Surveyor's Certificate was acknowledged before me this 7th day of June, 1990 by Edward J. Otto, Land Surveyor, Minnesota License Number 14343.

WENDY M. OTTO
NOTARY PUBLIC - MINNESOTA
WRIGHT COUNTY
My Commission Expires 9/25/93

Wendy M. Otto
Notary Public, Wright County, Minnesota
My Commission Expires 9/25/93

HAM LAKE, MINNESOTA
I hereby certify that this plat of PHEASANT RUN SECOND ADDITION was approved by the City Council of the City of Ham Lake at a regular meeting thereof held this 4th day of June, 1990. If applicable, the written comments and recommendations of the Commissioner of Transportation and the County Highway Engineer have been received by the City or the prescribed 30 day period has elapsed without receipt of such comments and recommendations, as provided by Minnesota statutes Section 505.03, Subdivision 2.

By *Therilyn Schultz* Mayor By *Ulin A. Nivala* City Clerk

COUNTY SURVEYOR, Anoka County, Minnesota
This plat has been checked and approved this 17th day of August, 1990.

By *MERLYN D. ANDERSON* by *Larry D. Blom*
Merlyn Anderson
Anoka County Surveyor deputy

904485

"NO DELINQUENT TAXES AND TRANSFER ENTRIES"

August 30 1990
Charles R. Robinson
Auditor, Anoka County
By *Donald E. Bailey*
Anoka County Treasurer

I HEREBY CERTIFY THAT THE TAXES PAYABLE IN THE YEAR 1990 ON THE LANDS DESCRIBED WITHIN ARE PAID

2 Henry - deputy

OFFICE OF COUNTY RECORDER
STATE OF MINNESOTA, COUNTY OF ANOKA
I hereby certify that the within instrument was filed in this office for record on the Aug 20 AD, 1990 at 9:25 o'clock AM, and was duly recorded in book 42 of Plats page 35
Red Donald
County Recorder
By *Deta Kaye*
Deputy