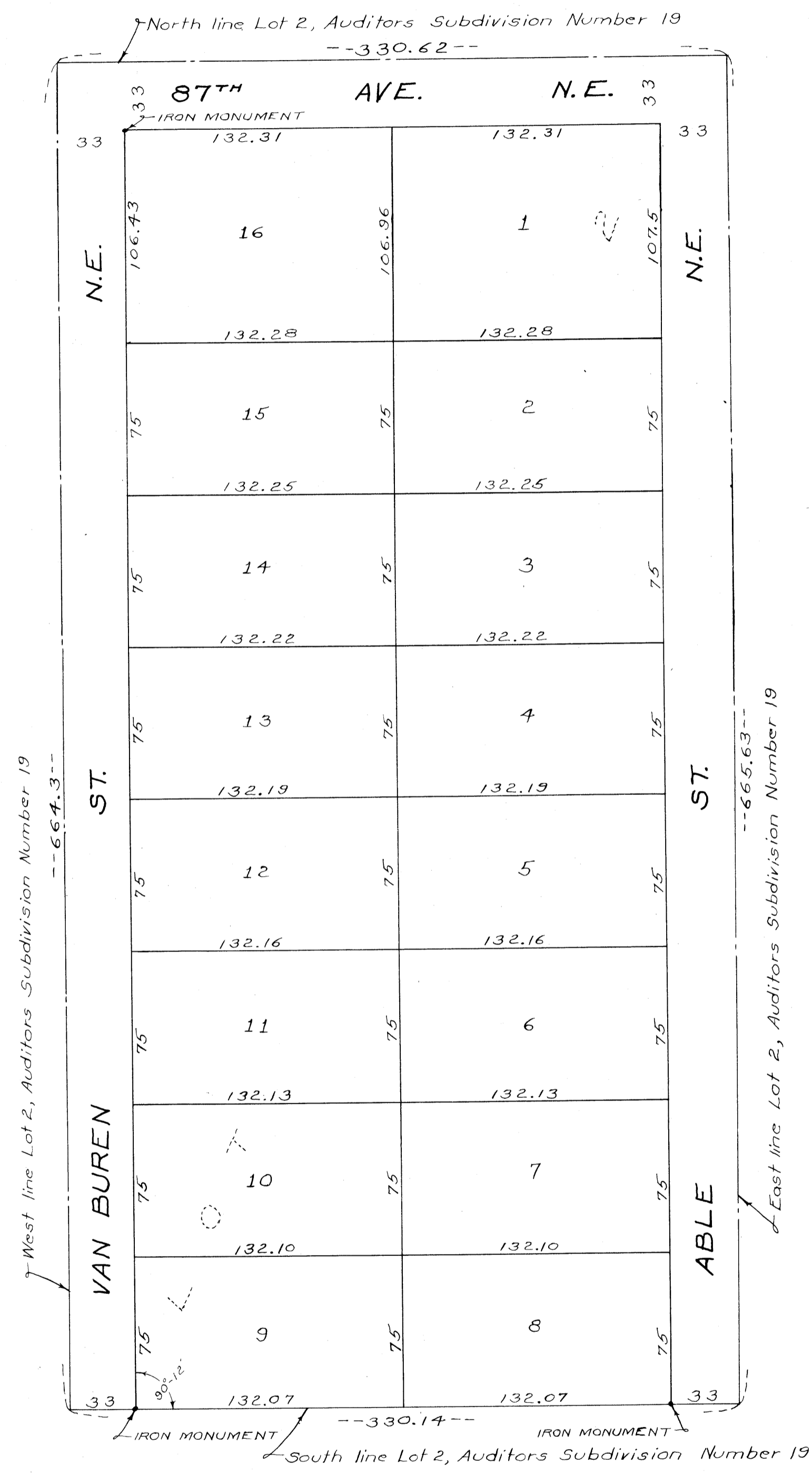


PHYLLIS ACRES

ANOKA COUNTY, MINNESOTA

Office of REGISTRAR OF TITLES
STATE OF MINNESOTA
COUNTY OF ANOKA
I hereby certify that the within instrument
was filed in this office on the 1st day of
December A.D. 1949 at 4 o'clock P.M.
by Ernest Frandell Registrar of Titles
by Harold Johnson DEPUTY REGISTRAR OF TITLES



KNOW ALL MEN BY THESE PRESENTS: That we, Stanley W. Dahlmeier and Frances A. Dahlmeier, his wife, owners and proprietors of the following described property located in the County of Anoka, State of Minnesota described as follows to-wit: Lot 2, Auditor's Subdivision Number 19 according to the Plat thereof on file in the Office of the Registrar of Titles in and for said County, have caused the same to be surveyed and platted as PHYLLIS ACRES, Anoka County, Minnesota, and do hereby donate and dedicate to the public for the public use forever the Streets and Avenue as shown on the annexed plat. In witness whereof we have hereunto set our hands and seals this 1st day of December A.D. 1949

In the presence of
Harry C. Castongt } As to S.W.D.
C. M. Dickey
Harry C. Castongt } As to F.A.D.
C. M. Dickey
Signed
Stanley W. Dahlmeier
Frances A. Dahlmeier

STATE OF MINNESOTA } s.s.
COUNTY OF HENNEPIN }
On this 1st day of December A.D. 1949 before me, a Notary Public within and for said County and State personally appeared Stanley W. Dahlmeier and Francis A. Dahlmeier, his wife, to me personally known to be the persons described in and who executed the foregoing instrument and they affirm and acknowledge that they executed the same as their own free act and deed.

Clara Mae Dickey
Notary Public, Hennepin County, Minnesota
My Commission Expires April 11, 1954

I hereby certify that I have surveyed and platted the land described in the dedication on this sheet as PHYLLIS ACRES, Anoka County, Minnesota; that this plat is a correct representation of said survey; that all distances are correctly shown on said plat in figures denoting feet and decimals of a foot; that the monuments for the guidance of future surveys have been correctly placed in the ground as shown on said plat; that the topography of the land is correctly shown on said plat; that the outside boundaries of the land are correctly designated as shown on said plat; and that there are no wet lands or public highways to be designated on said plat other than are shown thereon.

STATE OF MINNESOTA } s.s.
COUNTY OF HENNEPIN }
Above certificate subscribed and sworn to before me, a Notary Public within and for said County and State on this 1st day of December A.D. 1949

Harry C. Castongt
Registered Land Surveyor
Clara Mae Dickey
Notary Public, Hennepin County, Minnesota
My Commission Expires April 11, 1954

This plat was approved and accepted by the Honorable Board of County Commissioners of the County of Anoka, State of Minnesota, at a regular meeting held this 21st day of November A.D. 1949

H. S. Stack
Chairman Board of County Commissioners
Anoka County, Minnesota
E. Carlson
County Auditor, Anoka County, Minnesota

By G. Stimmer Deputy
This plat was approved as to form and execution on this 22nd day of November A.D. 1949

L. L. Little
County Attorney, Anoka County, Minnesota

We, the Chairman and Secretary of the Planning and Zoning Commission of the Town of Blaine do hereby certify that on this 10 day of November A.D. 1949 said Planning and Zoning Commission of the Town of Blaine, Minnesota, duly approved the above and foregoing plat of PHYLLIS ACRES, Anoka County, Minnesota and duly authorize the certification of such action of the commission by its Chairman and Secretary.

George Kato
Chairman of the Planning and Zoning Commission
Ernest P. Wiley
Secretary of the Planning and Zoning Commission

TAXES PAID
This lot so assessed for the year 1948
on the basis indicated within are paid
Walter D. Rowles
County Treasurer
by G. Stimmer Deputy

Walter D. Rowles
County Treasurer
by G. Stimmer Deputy