

# Pinewski Third Addition

1827752  
OFFICE OF COUNTY RECORDER  
STATE OF MINNESOTA, COUNTY OF ANOKA  
I hereby certify that the within instrument was filed in this office for record on the 24 JUL A.D., 2003 at 9:25 o'clock PM, and was duly recorded in book 65 page 23  
**MAUREEN J. DEVINE**  
County Recorder  
By SLZ  
Deputy

KNOW ALL PERSONS BY THESE PRESENTS: That Phillip A. Pinewski and Marjorie J. Pinewski, husband and wife, fee owners of the following described property situated in the County of Anoka, State of Minnesota, to wit:  
Lot 2, Block 1, PINEWSKI SECOND ADDITION, Anoka County, Minnesota.

Have caused the same to be surveyed and platted as PINEWSKI THIRD ADDITION and do hereby donate and dedicate to the public for public use forever the drainage and utility easements as shown on this plat. In witness whereof said Phillip A. Pinewski and Marjorie J. Pinewski, husband and wife, have hereunto set their hands this 9th day of JULY, 2003.

SIGNED:  
Phillip A. Pinewski  
Phillip A. Pinewski  
Marjorie J. Pinewski  
Marjorie J. Pinewski

STATE OF MINNESOTA  
COUNTY OF Anoka  
The foregoing instrument was acknowledged before me this 9th day of July, 2003 by Phillip A. Pinewski and Marjorie J. Pinewski, husband and wife.



Michelle L. Howland  
Notary Public, Minnesota  
My Commission Expires Jan 31, 2005

I hereby certify that I have surveyed and platted the property on this plat as PINEWSKI THIRD ADDITION; that this plat is a correct representation of said survey; that all distances are correctly shown on said plat in feet and hundredths of a foot; that all monuments have been correctly placed in the ground as shown on said plat or will be placed as required by the local governmental unit as designated on said plat; that the outside boundary lines are correctly designated on said plat; and that there are no wetlands as defined in MS 505.02, subd. 1, or public highways to be designated other than as shown.

Charles R. Christopherson  
Charles R. Christopherson, Land Surveyor  
Minnesota License No. 18420

STATE OF MINNESOTA  
COUNTY OF ANOKA  
The foregoing instrument was acknowledged before me this 27th day of June, 2003 by Charles R. Christopherson, Land Surveyor.



Michelle L. Howland  
Notary Public, Minnesota  
My Commission Expires January 31, 2005

This plat of PINEWSKI THIRD ADDITION was approved by the Planning Commission of the City of Anoka, Minnesota this 1st day of APRIL, 2003.

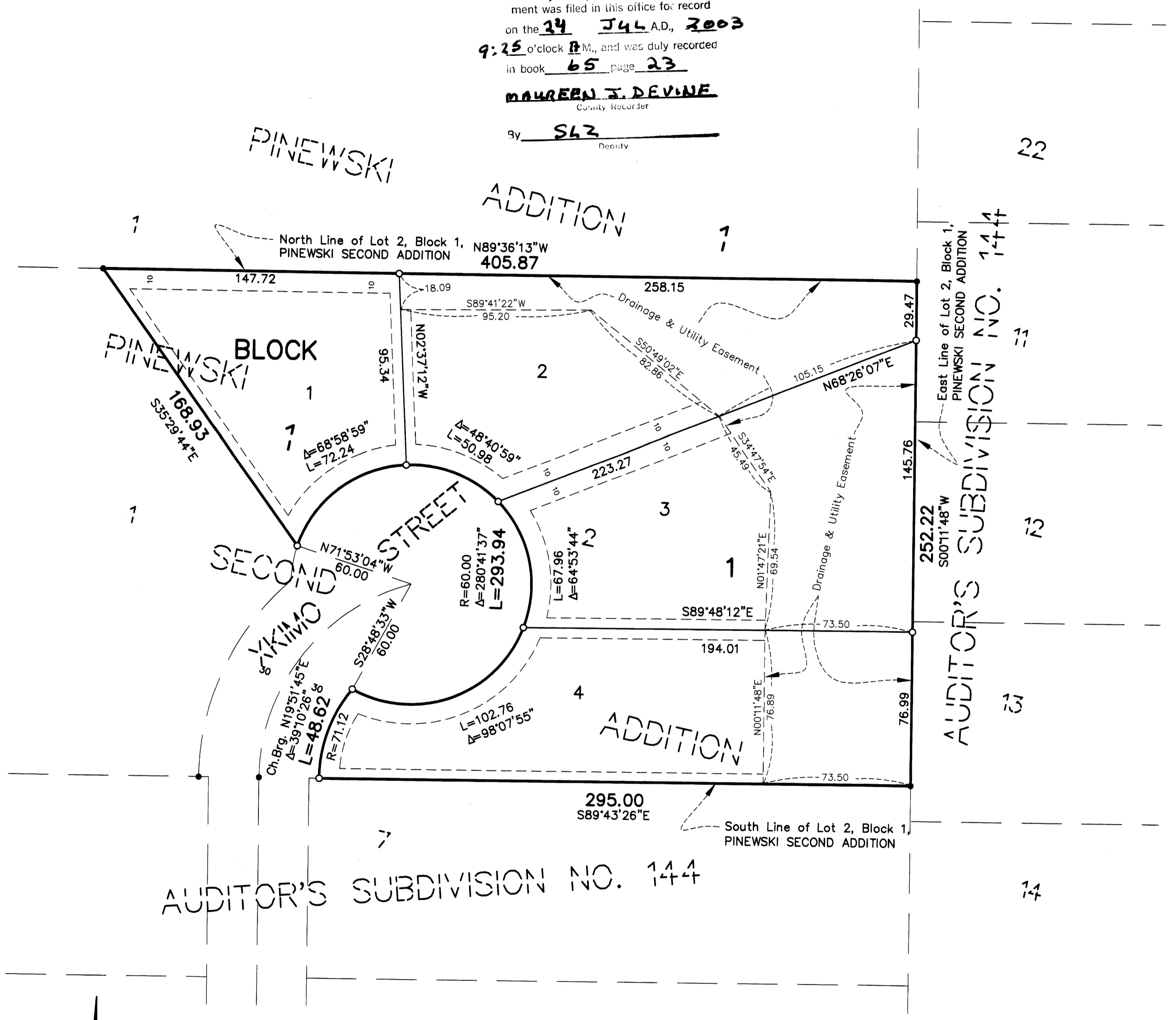
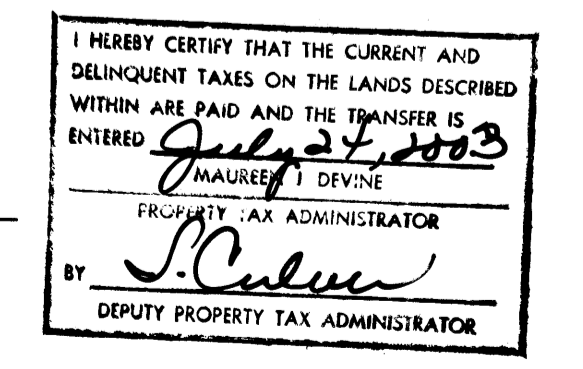
Craig Sorenson  
Chairman

ANOKA, MINNESOTA  
This plat of PINEWSKI THIRD ADDITION was approved and accepted by the City Council of Anoka, Minnesota, at a regular meeting thereof held this 19th day of MAY, 2003. If applicable, the written comments and recommendations of the Commissioner of Transportation and the County Highway Engineer have been received by the City or the prescribed 30 day period has elapsed without receipt of such comments and recommendations, as provided by Minn. Statutes Section 505.03, Subd. 2.

CITY COUNCIL OF THE CITY OF ANOKA, MINNESOTA  
Bjorn E. Skogquist Mayor  
Amy T. Oefflers Clerk

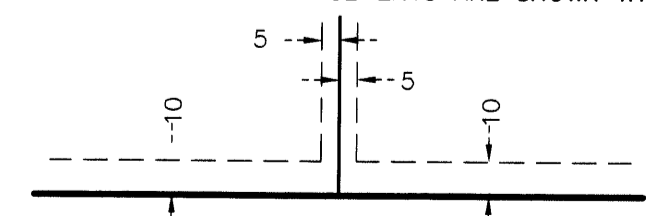
ANOKA COUNTY SURVEYOR  
This plat was checked and approved on this 23rd day of JULY, 2003.

Larry Holm  
Anoka County Surveyor

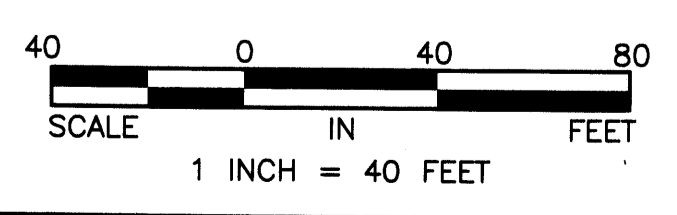


- Denotes 1/2 inch by 14 inch iron monument
- Denotes iron monument found

DRAINAGE AND UTILITY EASEMENTS ARE SHOWN THIS:



Being 5 feet in width and adjoining lot lines, and 10 feet in width and adjoining street lines unless otherwise shown on the plat.



For the purposes of this plat the North line of Lot 2, Block 1, Pinewski Second Addition, is assumed to bear N 89°36'13" W.

RECEIPT # 20030980051 \$ 215.00

