

POPLAR HOMES

ANOKA COUNTY, MINNESOTA

OFFICE OF REGISTER OF DEEDS,
STATE OF MINNESOTA, COUNTY OF ANOKA
I hereby certify that the within instrument was filed in this office for record on the MAR 2 1948 day of February, A. D. 1948, at 12 o'clock P.M., and was duly recorded in book 12 of Plate 12

Eva Brandell
Register of Deeds
by Darleen Larson
Deputy
CARTWRIGHT & OLSON
LAND SURVEYORS

KNOW ALL MEN BY THESE PRESENTS: That we John Babinski and Bertha Babinski, his wife, owners and proprietors of the following described property situate in the County of Anoka, State of Minnesota to-wit: The South 1/2 of the Southwest 1/4 of the Southeast 1/4 of Section 31, Township 31, Range 23, except that portion taken for United States Highway Number 10 as the same is now laid out and traveled, have caused the same to be surveyed and platted as POPLAR HOMES, and do hereby donate and dedicate to the public for the public use forever the Roads, Lane, Avenue and Highway as shown on the annexed plat. In witness whereof we have hereunto set our hands and seals on this 9 day of February, 1948 A.D.

In the presence of
Mary Muzgala } As to J. B. John Babinski
Ray E. Rosell }
Mary Muzgala } As to B. B. Bertha Babinski
Ray E. Rosell }

STATE OF MINNESOTA } s.s.
COUNTY OF HENNEPIN }
On this 9 day of February, 1948 A.D. before me, a Notary Public within and for said County and State, personally appeared John Babinski and Bertha Babinski, his wife, to me personally known to be the persons described in and who executed the foregoing instrument, and they affirm and acknowledge that they executed the same as their own free act and deed.

Ray E. Rosell
Notary Public, Hennepin County, Minnesota
My Commission Expires June 3, 1954

I hereby certify that I have surveyed and platted the land described in the dedication on this sheet as POPLAR HOMES; that this plat is a correct representation of said survey; that all distances are correctly shown on said plat in figures denoting feet and decimals of a foot; that the monuments for the guidance of future surveys have been correctly placed in the ground as shown on said plat; that the topography of the land is correctly shown on said plat; that the outside boundaries of the land are correctly designated on said plat; and that there are no wet lands or public highways to be designated on said plat other than are shown thereon.

James C. Cartwright
Registered Land Surveyor

STATE OF MINNESOTA } s.s.
COUNTY OF HENNEPIN }
Above certificate subscribed and sworn to before me, a Notary Public within and for said County and State on this 9 day of February, 1948 A.D.

Clara Mae Dickey
Notary Public, Hennepin County, Minnesota
My Commission Expires April 14, 1954

This plat was approved and accepted by the Honorable Board of County Commissioners of the County of Anoka, State of Minnesota, at a regular meeting held this 9 day of February, 1948 A.D.

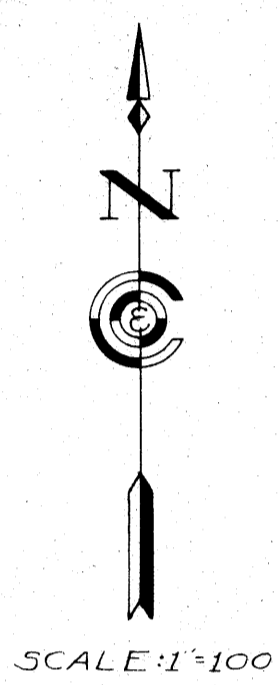
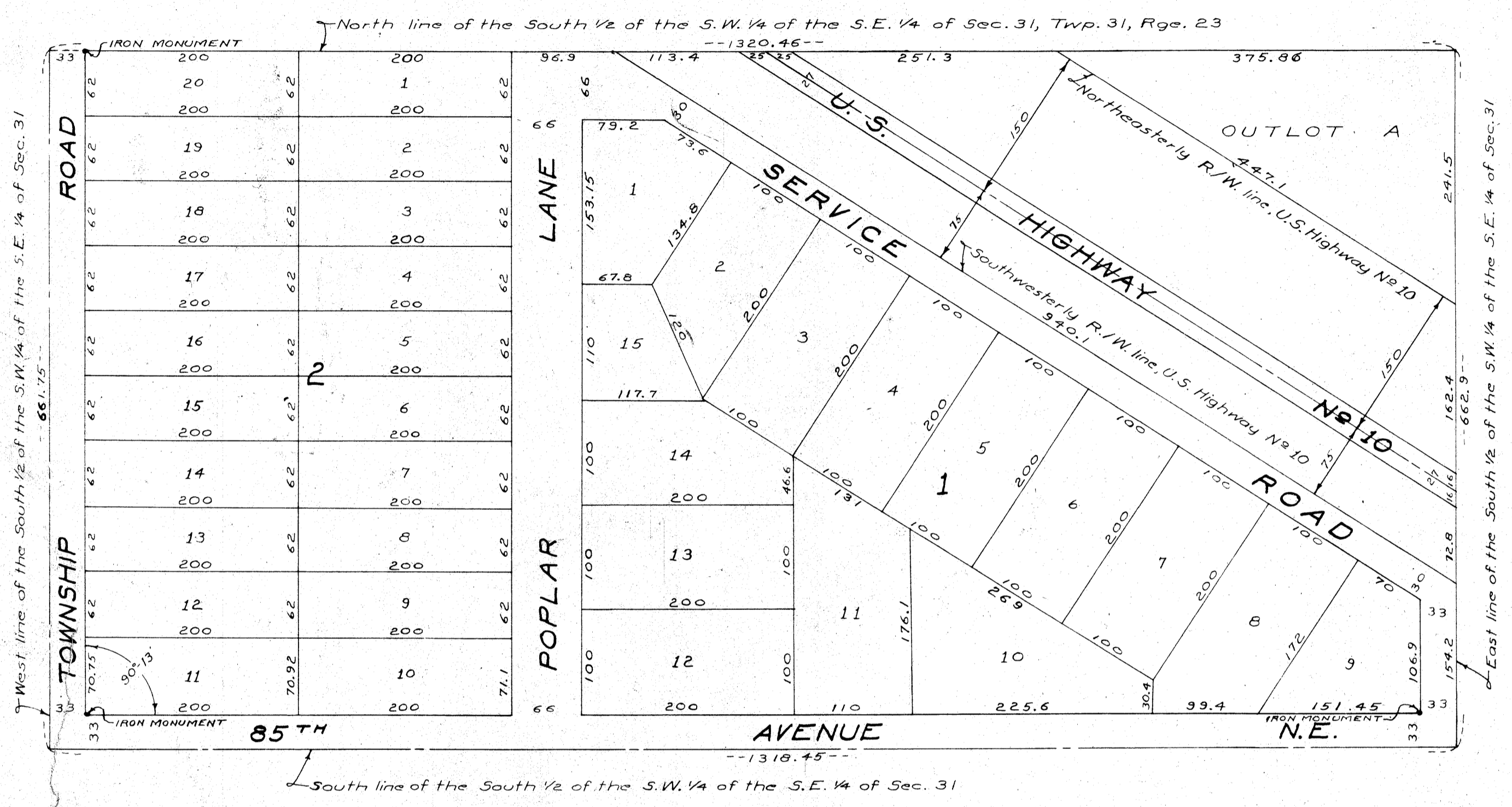
H.S. Stack
Chairman, Board of County Commissioners
Anoka County, Minnesota

E.L. Carlson
County Auditor, Anoka County, Minnesota

By D. Anstad Deputy

This plat was approved as to form and execution on this 20 day of February, 1948 A.D.

L. Hansch Petter
County Attorney, Anoka County, Minnesota



TAXES PAID
TRANSFER ENTERED
MAR 2 1948
E.L. Carlson
Auditor, Anoka County
By D. Anstad
Deputy

I hereby certify that taxes for the year 1947
on the lands described within are paid
Walter Stowers
County Treasurer
By Ray E. Rosell
Deputy