

POPLAR RIDGE

TOWNSHIP OF OAK GROVE COUNTY OF ANOKA

KNOW ALL PERSONS BY THESE PRESENTS: That Bilmar, Inc., a Minnesota corporation, owner and proprietor of the following described property situated in the County of Anoka, State of Minnesota, to-wit:

The north 661.00 feet of the Northwest Quarter of the Southeast Quarter of Section 15, Township 33, Range 24.

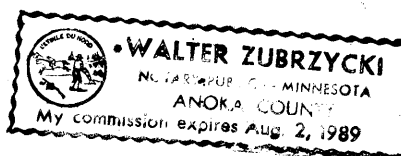
Has caused the same to be surveyed and platted as POPLAR RIDGE and does hereby donate and dedicate to the public for public use forever the Road and Lane as shown on the plat. Also dedicating the drainage and/or utility easements as shown on the plat. Also dedicating to the County of Anoka the right of access onto County Road No. 67 from Lot 1, Block 1 and from Lot 1, Block 2. In witness whereof said Bilmar, Inc. has caused these presents to be signed by its proper officer this 22 day of December, 1987.

BILMAR, INC.

William A. Burman
William A. Burman, President

STATE OF MINNESOTA)
COUNTY OF ANOKA

The foregoing instrument was acknowledged before me this 22 day of December, 1987, by William A. Burman, President of Bilmar, Inc., a Minnesota corporation, on behalf of the corporation.



Walter Zubrzycki
Notary Public, Anoka County, Minnesota
My Commission Expires 8-2-89

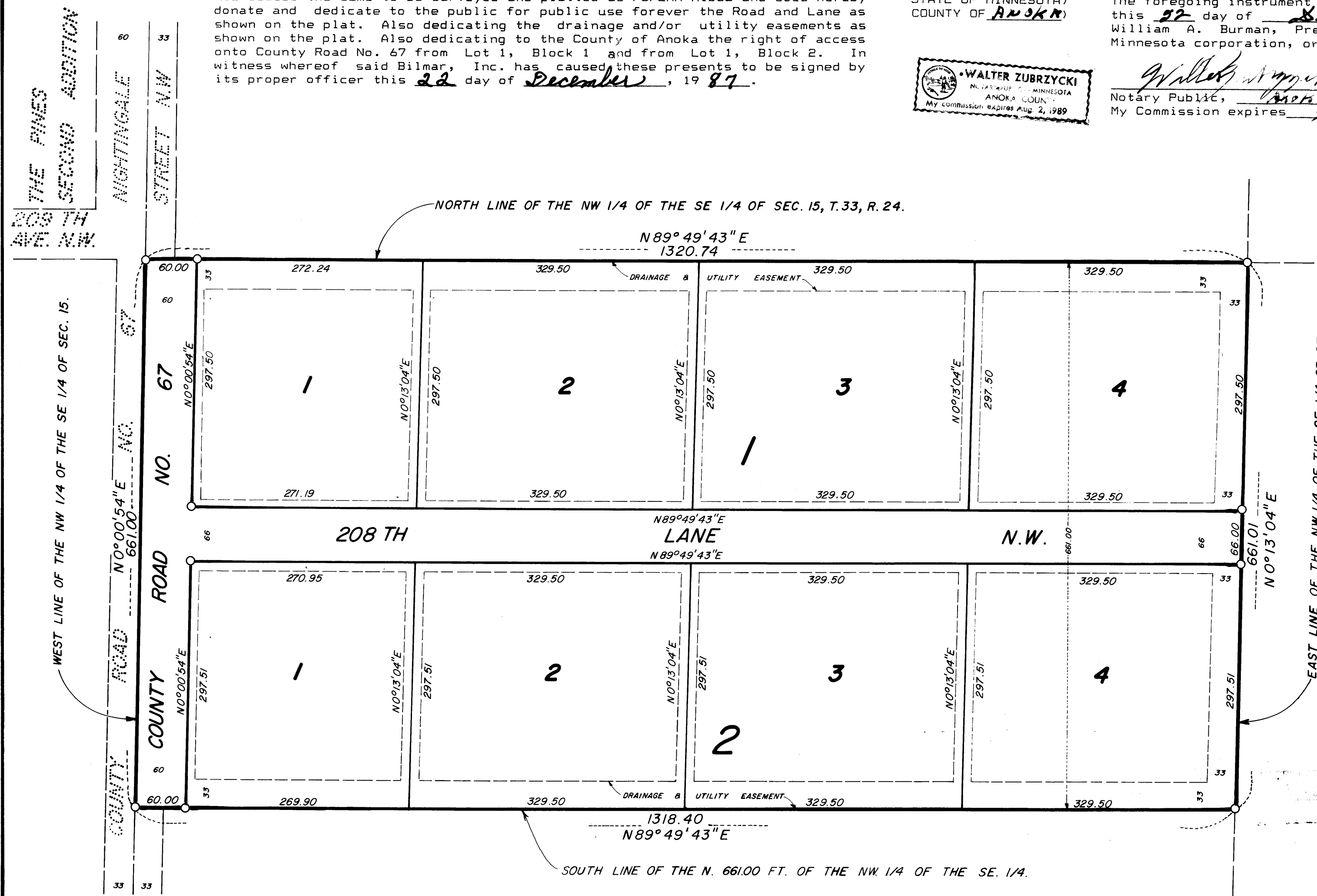
I hereby certify that I have surveyed and platted the land described in the dedication on this plat as POPLAR RIDGE; that the plat is a correct representation of said survey; that all distances are correctly shown on said plat in feet and hundredths of a foot; that the monuments have been correctly placed in the ground as shown; that the outside boundaries are correctly designated on said plat; and that there are no wet lands or public highways to be designated on said plat other than as shown thereon.

Jeffrey N. Caine
Jeffrey N. Caine, Registered Land Surveyor
Minnesota Registration No. 12251

STATE OF MINNESOTA)
COUNTY OF ANOKA

The surveyors certificate was acknowledged before me a Notary Public, this 10th day of December, 1987, by Jeffrey N. Caine, Land Surveyor.

Nancy S. Caine
Notary Public, Anoka County, Minnesota
My Commission expires 9-22-92



TOWNSHIP OF OAK GROVE:

We the Chairman and Town Clerk of the Township Board of the Township of Oak Grove, Anoka County, Minnesota, do hereby certify that on this 30th day of November, 1987, said Township Board duly approved the plat of POPLAR RIDGE and authorized certification of such action of the Board by its Chairman and Town Clerk. If applicable, the written comments and recommendations of the Commissioner of Transportation and the County Highway Engineer have been received by the township or the prescribed 30 day period has elapsed without receipt of such comments and recommendations, as provided by Minn. Statutes, Section 505.03, Subd. 2.

Bonnie Ocker Chairman
Shirley Roepke Clerk

Checked and approved this 11th day of Jan, 1988.

By Wm D. Anderson
Anoka County Surveyor

Recommended for approval this 11th day of January, 1988.

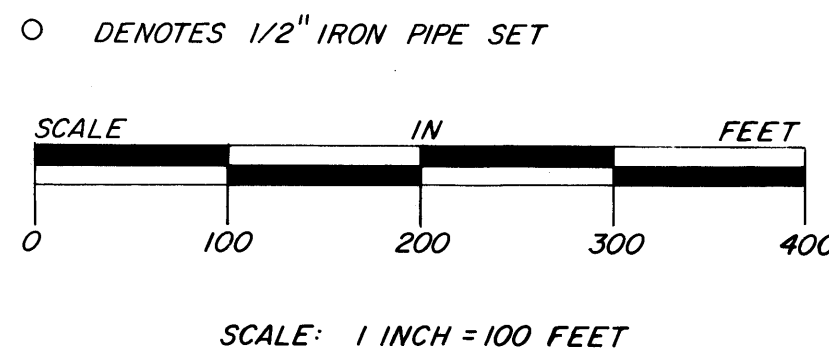
By Paul K. Lund
Anoka County Highway Engineer

This plat was approved and accepted by the Board of County Commissioners of the County of Anoka, State of Minnesota at a regular meeting thereof held this 21st day of Jan, 1988.

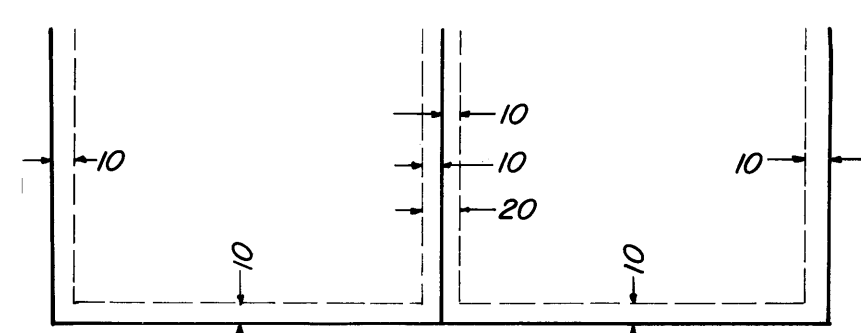
Dan Ewert Chairman
John Jay McInnis County Administrator

This plat was approved as to form and execution on this 9th day of February, 1988.

By Anthony C. Palumbo
Anoka County Attorney



DRAINAGE AND UTILITY EASEMENTS ARE SHOWN THUS:



BEING 10 FEET IN WIDTH AND ADJOINING ALL LOT LINES, UNLESS SHOWN OTHERWISE.

NOTE:

FOR THE PURPOSES OF THIS PLAT, THE NORTH LINE OF THE NW 1/4 OF THE SE 1/4 OF SEC. 15, T. 33, R. 24, IS ASSUMED TO BEAR N 89° 49' 43" E.

796553
OFFICE OF COUNTY RECORDER
STATE OF MINNESOTA, COUNTY OF ANOKA
I hereby certify that the within instrument was filed for record on the FEB 10, 1988 at 10:30 a.m. and was duly recorded in book 38 of Plats, page 48.
Ted J. Omsdall
County Recorder
By Dora Kay Ege

I HEREBY CERTIFY THAT THE TAXES PAYABLE IN THE YEAR 1988 ON THE LANDS DESCRIBED WITHIN ARE PAID.
Donald C. Piskun
Anoka County Treasurer

"NO DELINQUENT TAXES AND TRANSFER ENTERED"
Charles R. Koberle
Auditor, Anoka County
By Orville Schultz
Deputy

CAINE & ASSOCIATES
LAND SURVEYORS, INC.