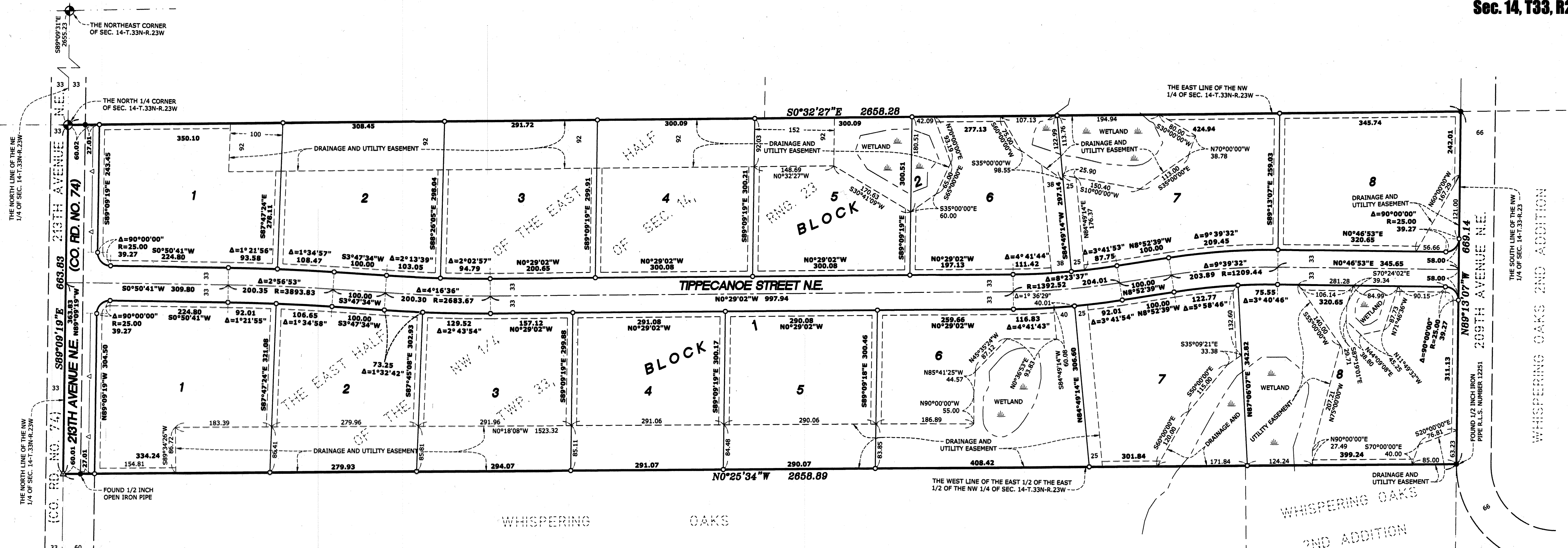


PRAIRIE HILLS

City of East Bethel
County of Anoka
Sec. 14, T33, R23



KNOW ALL PERSONS BY THESE PRESENTS: That T.H. Construction of Anoka, Inc., a Minnesota corporation, owner of the following described property:

The East Half of the East Half of the Northwest Quarter of Section 14, Township 33, Range 23, Anoka County, Minnesota.

Has caused the same to be surveyed and platted as PRAIRIE HILLS and does hereby dedicate to the public for public use the public ways and the drainage and utility easements as shown on this plat. Also dedicating to the County of Anoka the right of access onto County Road 74 as shown on this plat.

In witness whereof said T.H. Construction of Anoka, Inc., a Minnesota corporation, has caused these presents to be signed by its proper officer this 2nd day of May, 2023.

T.H. CONSTRUCTION OF ANOKA, INC.

Anthony Lee Hennen
Anthony Lee Hennen, President

STATE OF Minnesota
COUNTY OF Anoka

This instrument was acknowledged before me this 2nd day of May, 2023 by Anthony Lee Hennen, President of T.H. Construction of Anoka, Inc., a Minnesota corporation, on behalf of the company.

Kirsten K. Statema
(Signature)

Kirsten K. Statema (Print Name)
Notary Public, Anoka County, Minnesota
My Commission Expires 01/31/2025

I Jason E. Rud do hereby certify that this plat was prepared by me or under my direct supervision; that I am a duly Licensed Land Surveyor in the State of Minnesota; that this plat is a correct representation of the boundary survey; that all mathematical data and labels are correctly designated on this plat; that all monuments depicted on this plat have been, or will be correctly set within one year; that all water boundaries and wet lands, as defined in Minnesota Statutes, Section 505.01, Subd. 3, as of the date of this certificate are shown and labeled on this plat; and all public ways are shown and labeled on this plat.

Dated this 2nd day of April, 2023.

Jason E. Rud
Jason E. Rud, Licensed Land Surveyor
Minnesota License No. 41578



STATE OF MINNESOTA
COUNTY OF Anoka

This instrument was acknowledged before me this 3rd day of April, 2023 by Jason E. Rud.

LaVae Mack
(Signature)

LaVae Mack (Print Name)
Notary Public, Anoka County, Minnesota
My Commission Expires January 31, 2027

CITY COUNCIL, CITY OF EAST BETHEL, MINNESOTA

This plat of PRAIRIE HILLS was approved and accepted by the City Council of the City of East Bethel, Minnesota at a regular meeting thereof held this 27th day of June, 2023, and said plat is in compliance with the provisions of Minnesota Statutes, Section 505.03, Subd. 2.

CITY COUNCIL, CITY OF EAST BETHEL, MINNESOTA

By *Chris Dwyer* Mayor By *Jack Davis* Clerk

COUNTY SURVEYOR

I hereby certify that in accordance with Minnesota Statutes, Section 505.021, Subd. 11, this plat has been reviewed and approved this 9th day of May, 2023.

David M. Ziegemeier
David M. Ziegemeier
Anoka County Surveyor

COUNTY AUDITOR/TREASURER

Pursuant to Minnesota Statutes, Section 505.021, Subd. 9, taxes payable in the year 2023 on the land hereinbefore described have been paid. Also, pursuant to Minnesota Statutes, Section 272.12, there are no delinquent taxes and transfer entered this 9th day of May, 2023.

Pamela J LeBlanc
Pamela J LeBlanc
Property Tax Administrator

By *Annette Schmidt*, Deputy

COUNTY RECORDER/REGISTRAR OF TITLES
COUNTY OF ANOKA, STATE OF MINNESOTA

I hereby certify that this plat of PRAIRIE HILLS was filed in the office of the County Recorder/Registrar of Titles for public record on this 9th day of May, 2023, at 9:23 o'clock A.M. and was duly recorded as Document Number 2390265.003.

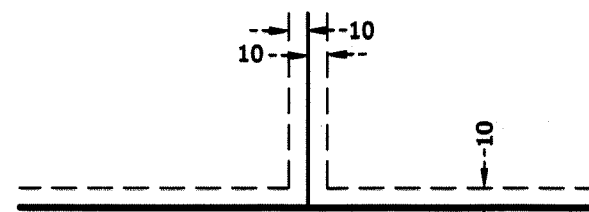
Pamela J LeBlanc
Pamela J LeBlanc
County Recorder/Registrar of Titles

By *Annette Schmidt*, Deputy

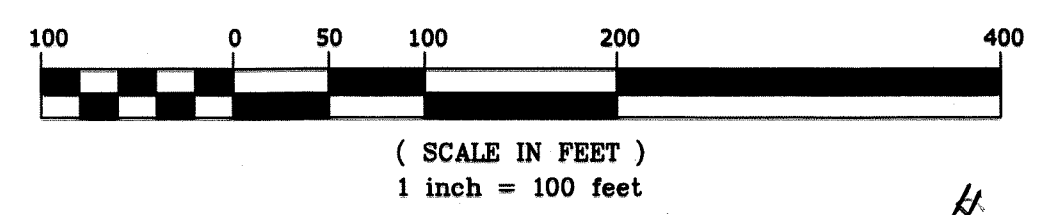
LEGEND

- ⊕ DENOTES ANOKA COUNTY CAST IRON MONUMENT.
- DENOTES FOUND 1/2 INCH IRON PIPE MARKED RLS 45498, UNLESS OTHERWISE SHOWN.
- DENOTES 1/2 INCH BY 14 INCH IRON PIPE SET, MARKED RLS NO. 41578.
- △ DENOTES SET PK NAIL
- △— DENOTES RIGHT OF ACCESS DEDICATED TO ANOKA COUNTY.
- ▬▬▬ DENOTES WETLAND EDGE AS DELINEATED BY JACOBSON ENVIRONMENTAL, PLLC IN MAY 2022.

DRAINAGE AND UTILITY EASEMENTS ARE SHOWN THUS:



BEING 10 FEET IN WIDTH AND ADJOINING RIGHT OF WAY LINES, SIDE AND REAR LOT LINES, UNLESS OTHERWISE SHOWN ON THIS PLAT.



FOR THE PURPOSES OF THIS PLAT, THE EAST LINE OF THE NORTHWEST QUARTER OF SECTION 14, TOWNSHIP 33, RANGE 23, ANOKA COUNTY, MINNESOTA IS ASSUMED TO HAVE A BEARING OF SOUTH 00 DEGREES 32 MINUTES 27 SECONDS EAST.

510