

PREMIER ESTATES

CITY OF OAK GROVE
COUNTY OF ANOKA
SEC. 19, TWP. 33, RGE. 24

KNOW ALL PERSONS BY THESE PRESENTS: That Premier Custom Homes, Inc., a Minnesota corporation, owner of the following described property:

The South One-Half of the Southeast Quarter of the Northwest Quarter, Section 19, Township 33, Range 24, Anoka County, Minnesota.

Has caused the same to be surveyed and plotted as PREMIER ESTATES and does hereby dedicate to the public for public use the public ways and the drainage and utility easements as shown on this plat.

In witness whereof said Premier Custom Homes Inc., a Minnesota corporation, has caused these presents to be signed by its proper officer this 17th day of May, 2021.

PREMIER CUSTOM HOMES, INC.

Brandon H. Vasquez
Brandon H. Vasquez, President

STATE OF Minnesota
COUNTY OF Anoka

This instrument was acknowledged before me on May 12, 2021 by Brandon H. Vasquez, President of Premier Custom Homes, Inc., a Minnesota corporation, on behalf of the corporation.

Saul G. Hall (Signed)
Saul J. Hall (Printed)
Notary Public, Anoka County, Minnesota
My commission expires 1/31/2025

I, Thomas R. Balluff do hereby certify that this plat was prepared by me or under my direct supervision; that I am a duly Licensed Land Surveyor in the State of Minnesota; that this plat is a correct representation of the boundary survey; that all mathematical data and labels are correctly designated on this plat; that all monuments depicted on this plat have been, or will be correctly set within one year; that all water boundaries and wet lands, as defined in Minnesota Statutes, Section 505.01, Subd. 3, as of the date of this certificate are shown and labeled on this plat; and all public ways are shown and labeled on this plat.

Dated this 21st day of April, 2021

Thomas R. Balluff
Thomas R. Balluff, Licensed Land Surveyor
Minnesota License No. 40361

STATE OF Minnesota
COUNTY OF Anoka

This instrument was acknowledged before me on April 21, 2021 by Thomas R. Balluff.

Cynthia J. Morical (Signed)
Cynthia J. Morical (Printed)
Notary Public, Hennepin County, Minnesota
My commission expires January 31, 2025

CITY COUNCIL, CITY OF OAK GROVE, MINNESOTA

This plat of PREMIER ESTATES was approved and accepted by the City Council of the City of Oak Grove, Minnesota at a regular meeting thereof held this 21st day of April, 2021, and said plat is in compliance with the provisions of Minnesota Statutes, Section 505.03, Subd. 2.

CITY COUNCIL, CITY OF OAK GROVE, MINNESOTA

By: Dan Reum Mayor
By: J. Riemund Clerk

COUNTY SURVEYOR

I hereby certify that in accordance with Minnesota Statutes, Section 505.021, Subd. 11, this plat has been reviewed and approved this 17th day of MAY, 2021.

By: Charles F. Gitzen by Don M. Ziegler
Charles F. Gitzen, Anoka County Surveyor
Don M. Ziegler, Deputy

COUNTY AUDITOR/TREASURER

Pursuant to Minnesota Statutes, Section 505.021, Subd. 9, taxes payable in the year 2021 on the land hereinbefore described have been paid. Also, pursuant to Minnesota Statutes, Section 272.12, there are no delinquent taxes and transfer entered this 17th day of May, 2021.

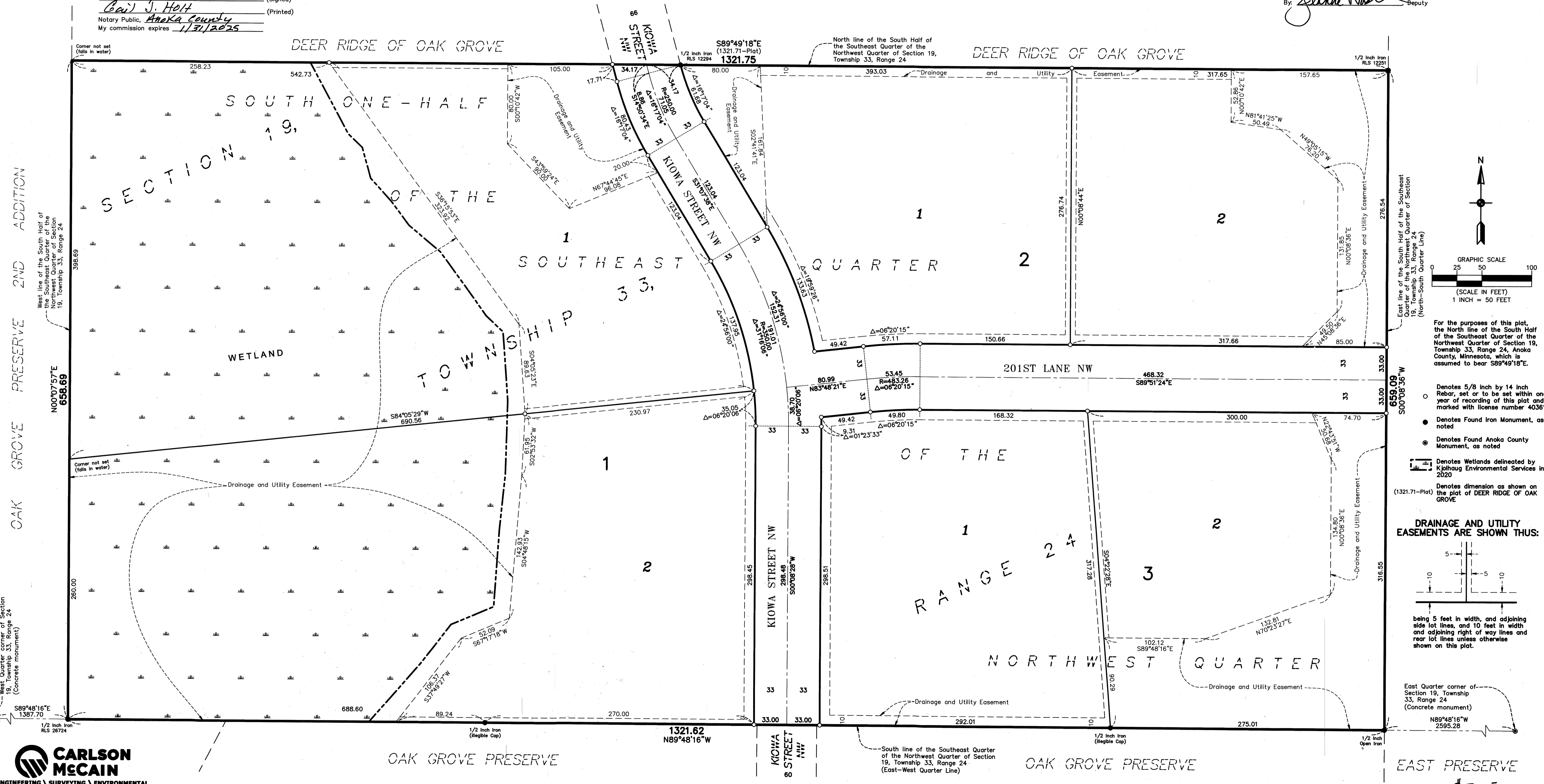
Pamela S. LeBlanc
Property Tax Administrator
By: Jeanne Nash Deputy

COUNTY RECORDER/REGISTRAR OF TITLES

County of Anoka, State of Minnesota

I hereby certify that this plat of PREMIER ESTATES was filed in the office of the County Recorder/Registrar of Titles for public record on this 17th day of May, 2021 at 11:18 o'clock A.M. and was duly recorded as Document Number 2318725.004.

Pamela S. LeBlanc
County Recorder/Registrar of Titles
By: Jeanne Nash Deputy



For the purposes of this plat, the North line of the South Half of the Southeast Quarter of the Northwest Quarter of Section 19, Township 33, Range 24, Anoka County, Minnesota, which is assumed to bear S89°49'18"E.

- Denotes 5/8 inch by 1/4 inch Rebar, set or to be set within one year of recording of this plat and marked with license number 40361
- Denotes Found Iron Monument, as noted
- Denotes Found Anoka County Monument, as noted
- Denotes Wetlands delineated by Kjelhaug Environmental Services in 2020
- Denotes dimension as shown on the plat of DEER RIDGE OF OAK GROVE

