

PRESERVE AT LEGACY CREEK 2ND ADDITION

CITY OF BLAINE
COUNTY OF ANOKA
SEC. 2, T. 31, R. 23

Book 77 Abst pg 23

KNOW ALL PERSONS BY THESE PRESENTS: That The Ryland Group, Inc., a Maryland corporation, owner of the following described property:

Outlot B, Outlot E and Outlot F, PRESERVE AT LEGACY CREEK, according to the recorded plat thereof, Anoka County, Minnesota

Has caused the same to be surveyed and platted as PRESERVE AT LEGACY CREEK 2ND ADDITION and does hereby dedicate to the public for public use the public ways and the drainage and utility easements as created by this plat.

In witness whereof said The Ryland Group, Inc., a Maryland corporation, has caused these presents to be signed by its proper officer this 5th day of June, 2014.

THE RYLAND GROUP, INC.

[Signature]

By: Michael W. DeVoe
Its: Operational Vice President

STATE OF MINNESOTA
COUNTY OF Hennepin

This instrument was acknowledged before me this 5th day of June, 2014 by Michael W. DeVoe, its Operational Vice President of The Ryland Group, Inc., a Maryland corporation, on behalf of the corporation.

[Signature]
[Signature]

Notary Public, Millers County, Minnesota
My Commission Expires Jan 31, 2015

I Craig W. Morse do hereby certify that this plat was prepared by me or under my direct supervision; that I am a duly Licensed Land Surveyor in the State of Minnesota; that this plat is a correct representation of the boundary survey; that all mathematical data and labels are correctly designated on this plat; that all monuments depicted on this plat have been, or will be correctly set within one year; that all water boundaries and wet lands, as defined in Minnesota Statutes, Section 505.01, Subd. 3, as of the date of this certificate are shown and labeled on this plat; and all public ways are shown and labeled on this plat.

[Signature]
Craig W. Morse, Licensed Land Surveyor
Minnesota License No. 23021

STATE OF MINNESOTA
COUNTY OF HENNEPIN

This instrument was acknowledge before me on April 16, 2014 by Craig W. Morse.

[Signature]
[Signature]

Notary Public, Carver County, Minnesota
My Commission Expires January 31, 2018

CITY COUNCIL, CITY OF BLAINE, MINNESOTA

This plat of PRESERVE AT LEGACY CREEK 2ND ADDITION was approved and accepted by the City Council of the City of Blaine, Minnesota at a regular meeting thereof held this 17th day of April, 2014, and said plat is in compliance with the provisions of Minnesota Statutes, Section 505.03, Subd. 2.

City Council, City of Blaine, Minnesota

[Signature] Mayor
[Signature] Clerk

COUNTY SURVEYOR

I hereby certify that in accordance with Minnesota Statutes, Section 505.021, Subd. 11, this plat has been reviewed and approved this 11th day of July, 2014.

[Signature] by [Signature], Deputy
Larry D. Holm, Anoka County Surveyor

I HEREBY CERTIFY THAT THE CURRENT AND DELINQUENT TAXES ON THE LANDS DESCRIBED HAVE BEEN PAID AND THE TRANSFER IS VALID.
[Signature]
PROPERTY TAX ADMINISTRATOR
BY: [Signature]
DEPUTY PROPERTY TAX ADMINISTRATOR

2085879.001

Office of RECORDER/REGISTRAR
OF TITLES

STATE OF MINNESOTA COUNTY OF ANOKA

I hereby certify that the within instrument was filed

for record on the 11 day of

July, 2014 at 2:34 o'clock P.M.

and was duly recorded in Book 77, page 23

[Signature]

Recorder/Registrar of Titles

[Signature]

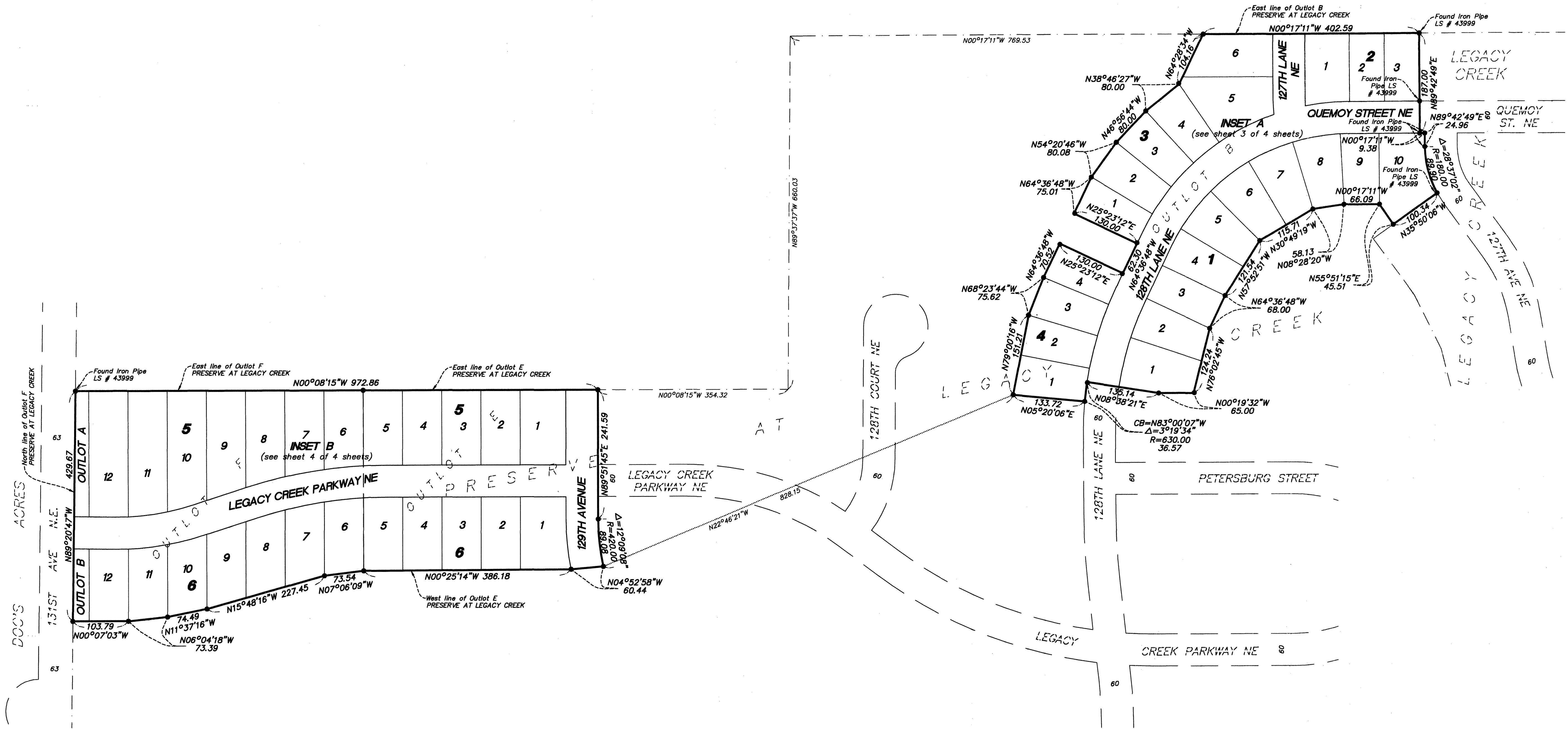
By [Signature]
Deputy

Westwood
Professional Services, Inc.

PRESERVE AT LEGACY CREEK 2ND ADDITION

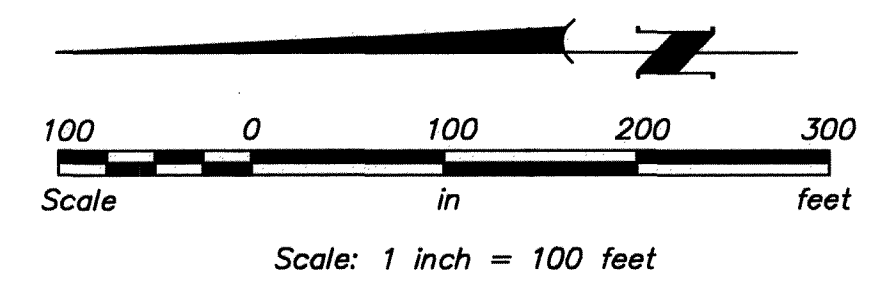
CITY OF BLAINE
COUNTY OF ANOKA
SEC. 2, T. 31, R. 23

Book 17 Abs 23
Pg 23



The east line of Outlot B, PRESERVE AT LEGACY CREEK is assumed to bear N 00°17'11" W.

• Denotes 1/2 inch by 14 inch iron monument found and marked by License No. 23021, unless otherwise shown.

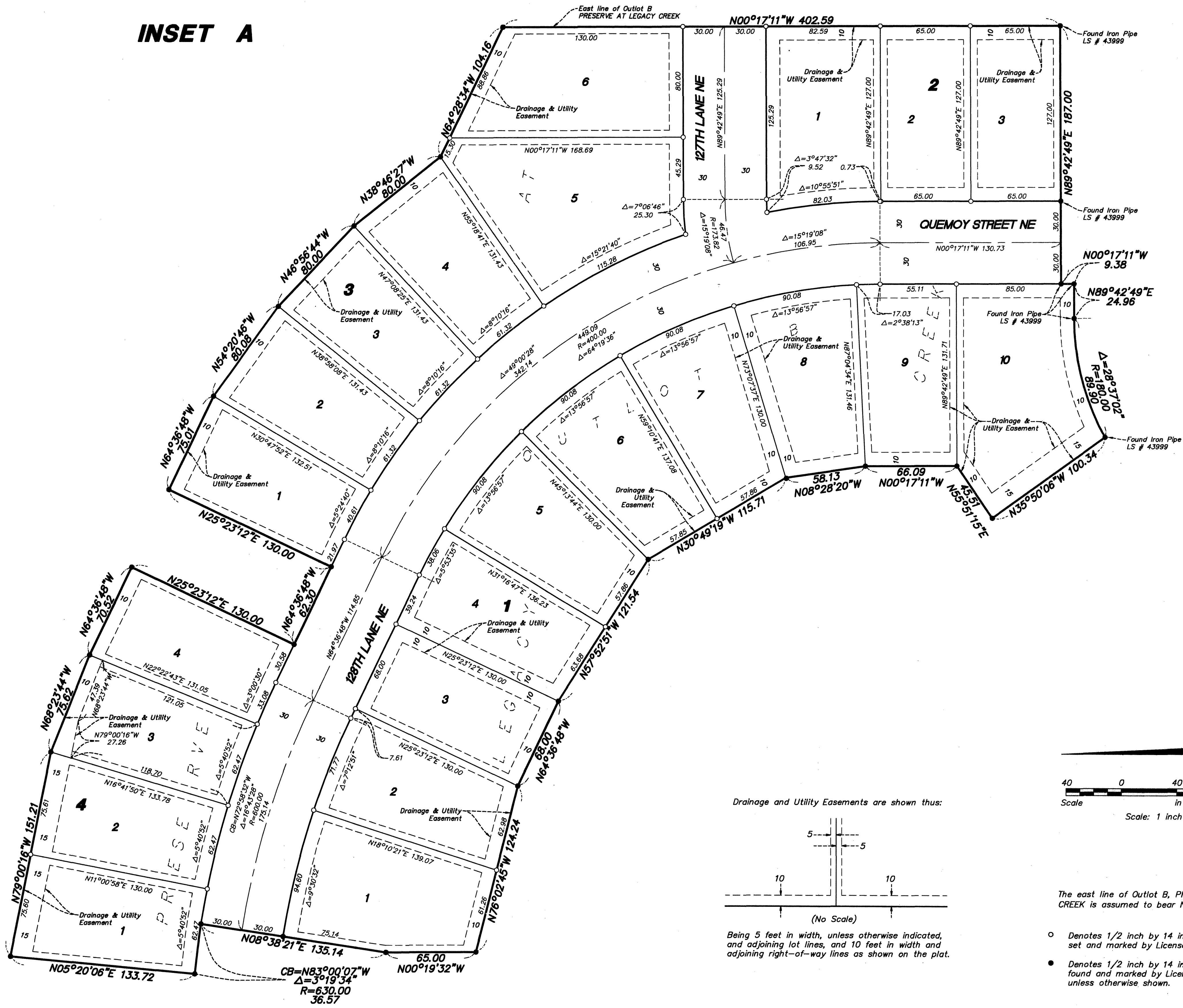


PRESERVE AT LEGACY CREEK 2ND ADDITION

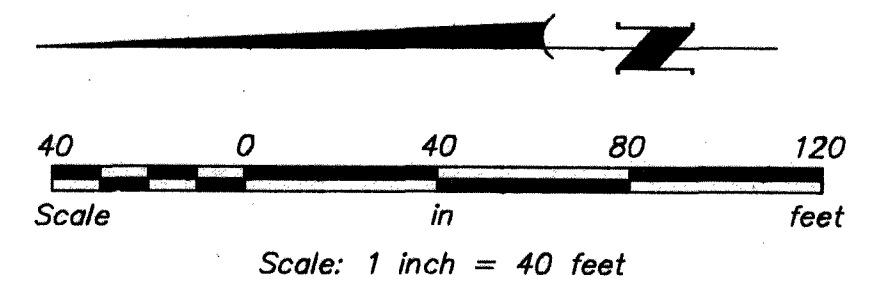
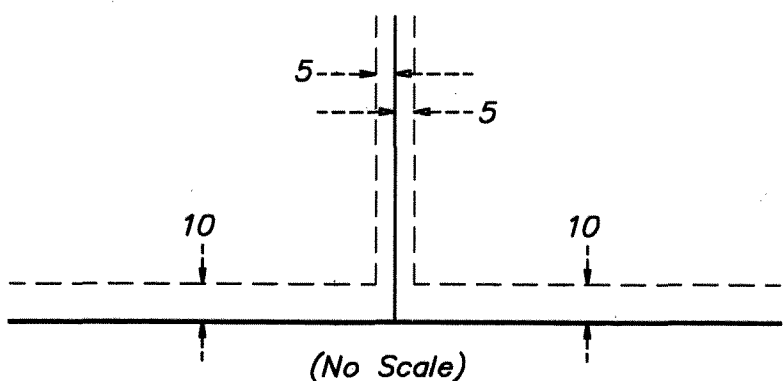
CITY OF BLAINE
COUNTY OF ANOKA
SEC. 2, T. 31, R. 23

Book 177 Abs 17 pg 23

INSET A



Drainage and Utility Easements are shown thus:



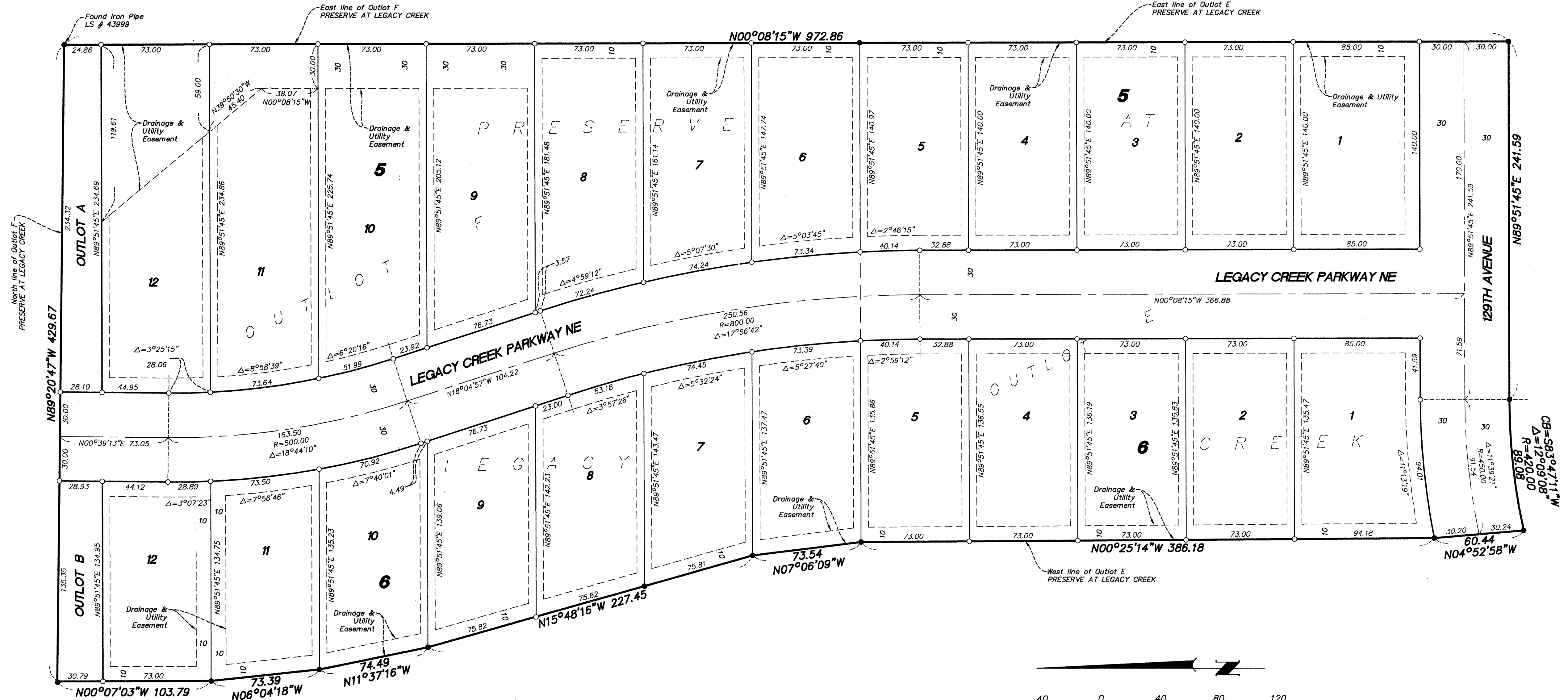
The east line of Outlot B, PRESERVE AT LEGACY CREEK is assumed to bear N 00°17'11" W.

- Denotes 1/2 inch by 14 inch iron monument set and marked by License No. 23021.
- Denotes 1/2 inch by 14 inch iron monument found and marked by License No. 23021, unless otherwise shown.

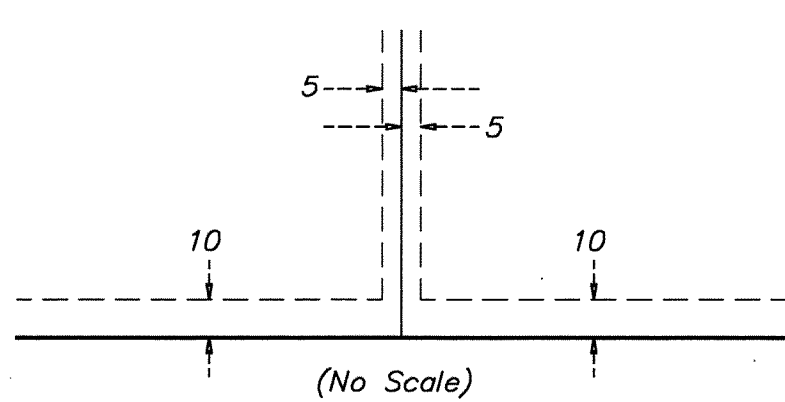
PRESERVE AT LEGACY CREEK 2ND ADDITION

CITY OF BLAINE
COUNTY OF ANOKA
SEC. 2, T. 31, R. 23
Book 77 Absor pg 23

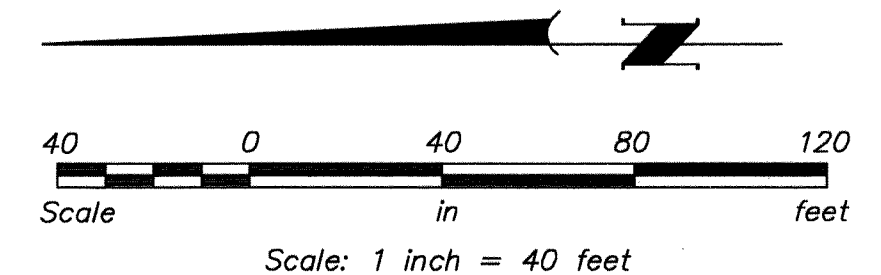
INSET B



Drainage and Utility Easements are shown thus:



Being 5 feet in width, unless otherwise indicated, and adjoining lot lines, and 10 feet in width and adjoining right-of-way lines as shown on the plat.



The east line of Outlot B, PRESERVE AT LEGACY CREEK is assumed to bear $N 00^{\circ}17'11'' W$, see sheet 2 of 4 sheets.

- Denotes 1/2 inch by 14 inch iron monument set and marked by License No. 23021.
- Denotes 1/2 inch by 14 inch iron monument found and marked by License No. 23021, unless otherwise shown.