

PRESERVE AT LEGACY CREEK 4TH ADDITION

BOOK 80 OF ABST CITY OF BLAINE
Page 4 COUNTY OF ANOKA
SEC. 2&3, T. 31, R. 23

KNOW ALL PERSONS BY THESE PRESENTS: That CalAtlantic Group, Inc., a Delaware corporation, owner of the following described property:

Outlot A, PRESERVE AT LEGACY CREEK 3RD ADDITION, according to the recorded plat thereof, Anoka County, Minnesota

Has caused the same to be surveyed and platted as PRESERVE AT LEGACY CREEK 4TH ADDITION and does hereby dedicate to the public for public use the public ways and the drainage and utility easements as shown on this plat.

In witness whereof said CalAtlantic Group, Inc., a Delaware corporation, has caused these presents to be signed by its proper officer this 7th day of April, 2017.

CALATLANTIC GROUP, INC.

By [Signature]
Michael W. DeVoe, Operational Vice President

STATE OF MINNESOTA
COUNTY OF Hennepin

This instrument was acknowledged before me this 7th day of April, 2017 by Michael W. DeVoe, its Operational Vice President of CalAtlantic Group, Inc., a Delaware corporation, on behalf of the corporation.

[Signature]
Alicia Faith Olsberg

[Signature]
Alicia Faith Olsberg

Notary Public, Hennepin County, Minnesota

My Commission Expires January 31, 2020

I Craig W. Morse do hereby certify that this plat was prepared by me or under my direct supervision; that I am a duly Licensed Land Surveyor in the State of Minnesota; that this plat is a correct representation of the boundary survey; that all mathematical data and labels are correctly designated on this plat; that all monuments depicted on this plat have been, or will be correctly set within one year; that all water boundaries and wet lands, as defined in Minnesota Statutes, Section 505.01, Subd. 3, as of the date of this certificate are shown and labeled on this plat; and all public ways are shown and labeled on this plat.

Dated this 24th day of March, 2017.

[Signature]
Craig W. Morse, Licensed Land Surveyor
Minnesota License No. 23021

STATE OF MINNESOTA
COUNTY OF HENNEPIN

This instrument was acknowledged before me this 24th day of March, 2017 by Craig W. Morse.

[Signature]
Shannon Sinnen

[Signature]
Shannon Sinnen

Notary Public, Carver County, Minnesota

My Commission Expires January 31, 2018

CITY COUNCIL, CITY OF BLAINE, MINNESOTA

This plat of PRESERVE AT LEGACY CREEK 4TH ADDITION was approved and accepted by the City Council of the City of Blaine, Minnesota at a regular meeting thereof held this 16th day of March, 2017, and said plat is in compliance with the provisions of Minnesota Statutes, Section 505.03, Subd. 2.

City Council, City of Blaine, Minnesota

[Signature]
Mayor

[Signature]
Clerk

COUNTY SURVEYOR

I hereby certify that in accordance with Minnesota Statutes, Section 505.021, Subd. 11, this plat has been reviewed and approved this 26th day of April, 2017.

[Signature]
Larry D. Hoium by [Signature], Deputy
Larry D. Hoium, Anoka County Surveyor

COUNTY AUDITOR/TREASURER

Pursuant to Minnesota Statutes, Section 505.021, Subd. 9, taxes payable in the year 2017 on the land hereinbefore described have been paid. Also, pursuant to Minnesota Statutes, Section 272.12, there are no delinquent taxes and transfer entered this 4th day of May, 2017.

[Signature]
Jonell M. Sawyer
Property Tax Administrator

By [Signature], Deputy

COUNTY RECORDER/REGISTRAR OF TITLES
COUNTY OF ANOKA, STATE OF MINNESOTA

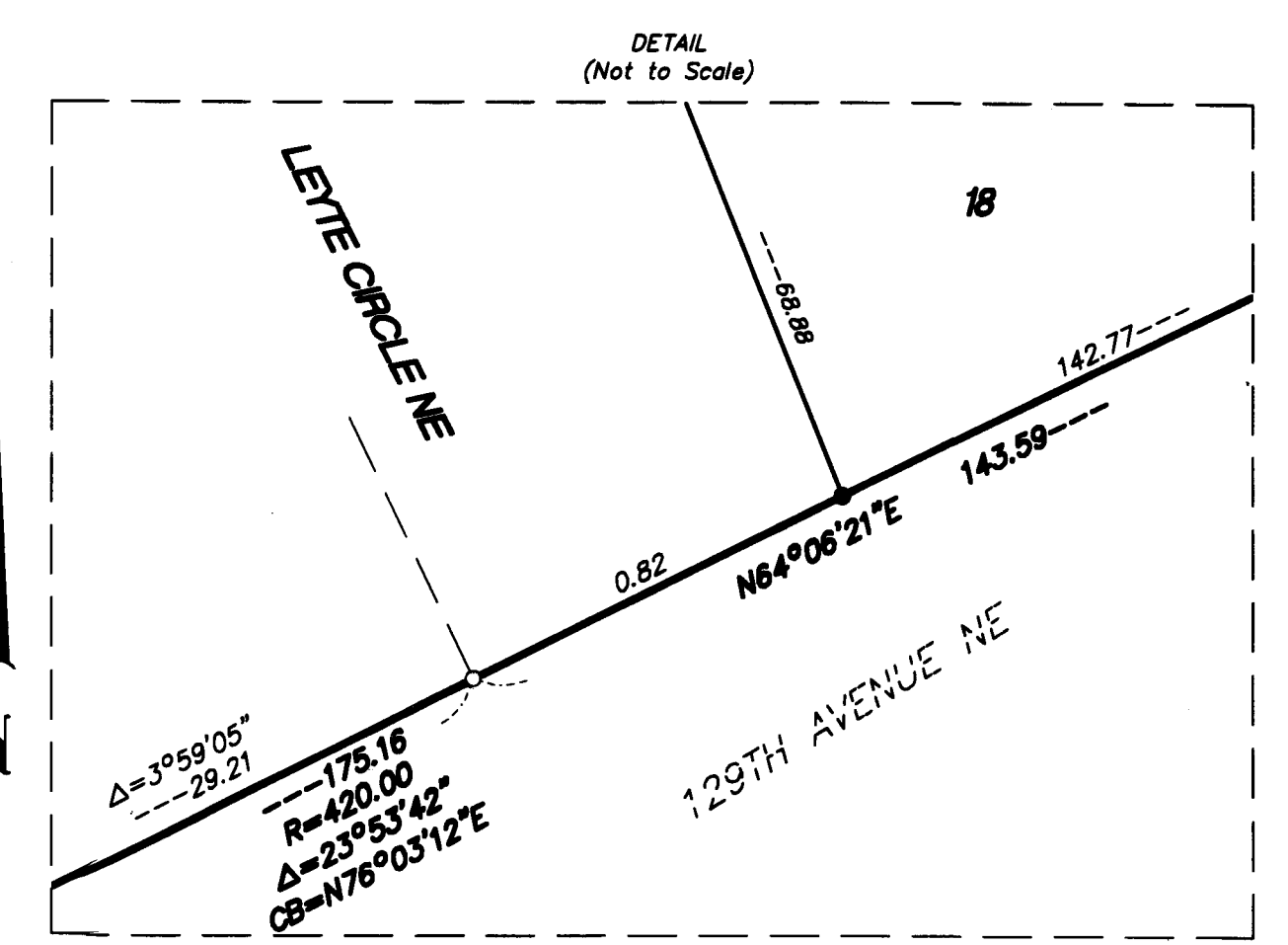
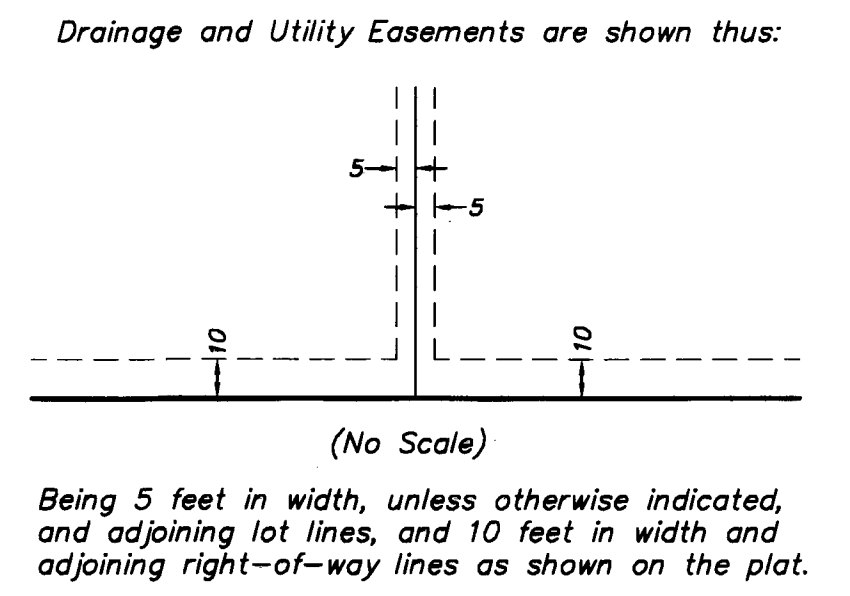
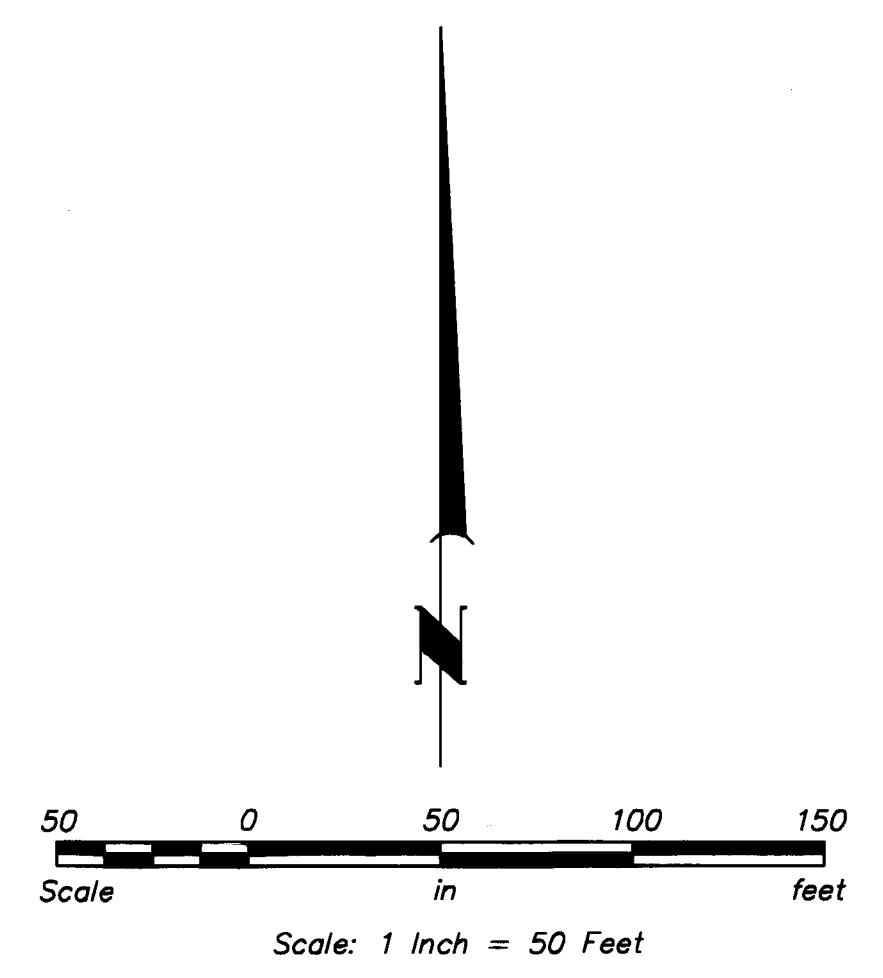
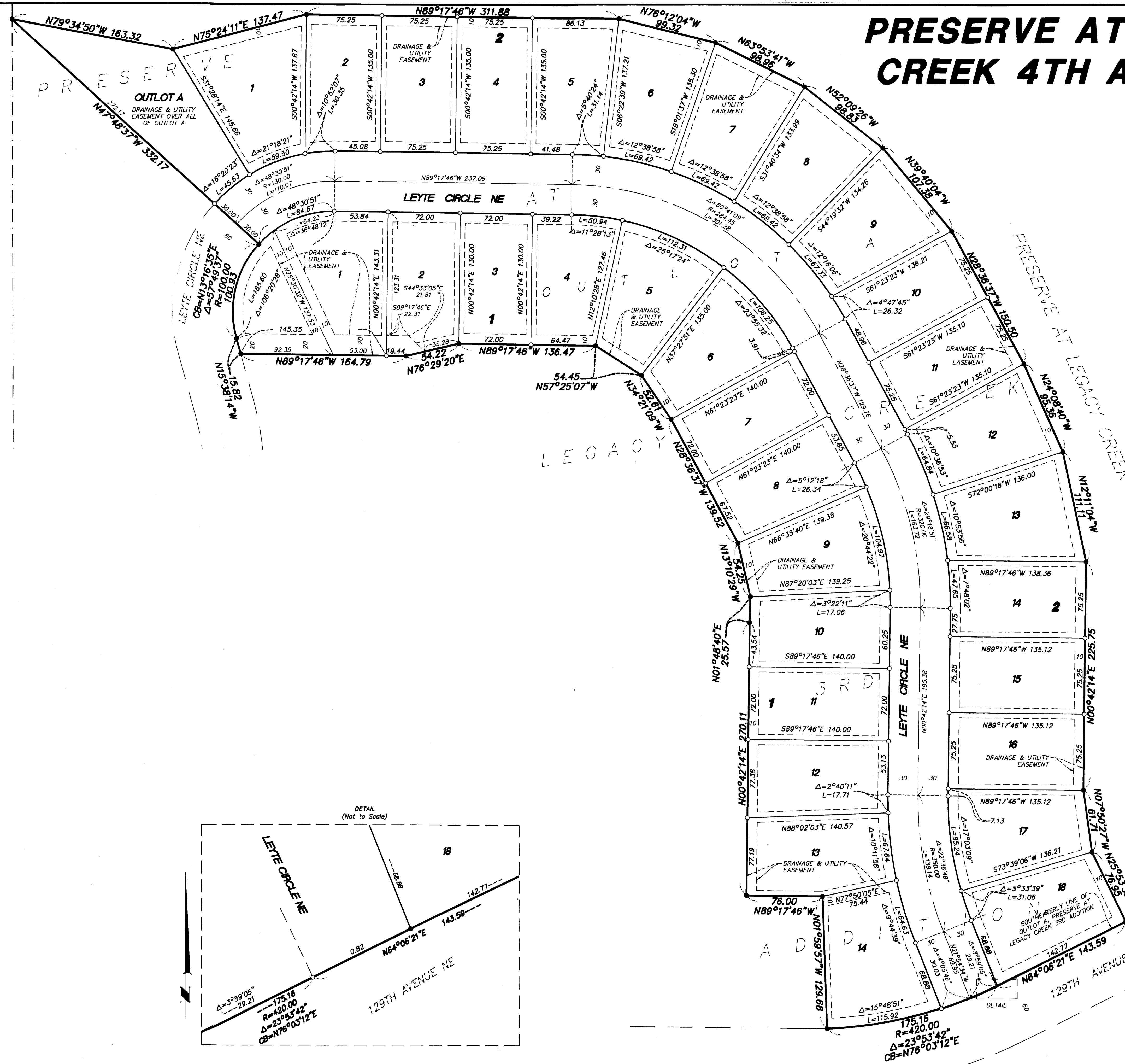
I hereby certify that this plat of PRESERVE AT LEGACY CREEK 4TH ADDITION was filed in the office of the County Recorder/Registrar of Titles for public record on this 4th day of May, 2017 at 2:30 o'clock P.M. and was duly recorded in Book 80 of ABST Page 4, as Document Number 2169647.023.

[Signature]
Jonell M. Sawyer
County Recorder/Registrar of Titles

By [Signature], Deputy

PRESERVE AT LEGACY CREEK 4TH ADDITION

Book 80 of CITY OF BLAINE
AEST COUNTY OF ANOKA
Page 4 SEC. 2&3, T. 31, R. 23



The most southeasterly line of Outlot A, PRESERVE AT LEGACY CREEK 3RD ADDITION is assumed to bear N 64°06'21" E.

- Denotes 1/2 inch by 14 inch iron rebar set and marked by License No. 23021
- Denotes 1/2 inch by 14 inch iron rebar found and marked by License No. 23021