

# PRESERVE AT LEGACY CREEK

CITY OF BLAINE  
COUNTY OF ANOKA  
SEC. 2&3, T. 31, R. 23

Book 76 Abs# pg 32

**KNOW ALL PERSONS BY THESE PRESENTS:** That Majestic Financial, LLC, a South Dakota limited liability company, owner of the following described property:

Outlot B, LEGACY CREEK 2ND ADDITION, according to the recorded plat thereof, Anoka County, Minnesota

Has caused the same to be surveyed and platted as **PRESERVE AT LEGACY CREEK** and does hereby dedicate to the public for public use the public ways and the drainage and utility easements as created by this plat.

In witness whereof said Majestic Financial, LLC, a South Dakota limited liability company, has caused these presents to be signed by its proper officer this 17<sup>th</sup> day of July, 2013.

MAJESTIC FINANCIAL, LLC

By [Signature]  
Its MANAGER

STATE OF MINNESOTA  
COUNTY OF Hennepin

This instrument was acknowledged before me this 17<sup>th</sup> day of July, 2013 by Chase R. Peterson, its Manager of Majestic Financial, LLC, a South Dakota limited liability company.

[Signature]  
Amy Williams

Notary Public, Hennepin County, Minnesota  
My Commission Expires 1-31-18



I Craig W. Morse do hereby certify that this plat was prepared by me or under my direct supervision; that I am a duly Licensed Land Surveyor in the State of Minnesota; that this plat is a correct representation of the boundary survey; that all mathematical data and labels are correctly designated on this plat; that all monuments depicted on this plat have been, or will be correctly set within one year; that all water boundaries and wet lands, as defined in Minnesota Statutes, Section 505.01, Subd. 3, as of the date of this certificate are shown and labeled on this plat; and all public ways are shown and labeled on this plat.

Dated this 17<sup>th</sup> day of July, 2013

[Signature]  
Craig W. Morse, Licensed Land Surveyor  
Minnesota License No. 23021

STATE OF MINNESOTA  
COUNTY OF HENNEPIN

This instrument was acknowledge before me on July 11, 2013 by Craig W. Morse.

[Signature]  
Shannon Sinnen  
Notary Public, Cannon County, Minnesota  
My Commission Expires January 31, 2018

CITY COUNCIL, CITY OF BLAINE, MINNESOTA

This plat of **PRESERVE AT LEGACY CREEK** was approved and accepted by the City Council of the City of Blaine, Minnesota at a regular meeting thereof held this 20<sup>th</sup> day of June, 2013, and said plat is in compliance with the provisions of Minnesota Statutes, Section 505.03, Subd. 2.

City Council, City of Blaine, Minnesota

By: [Signature], Mayor By: [Signature], Clerk

COUNTY SURVEYOR

I hereby certify that in accordance with Minnesota Statutes, Section 505.021, subd. 11, this plat has been reviewed and approved this 31<sup>st</sup> day of July, 2013.

Larry D. Hoium by Charles F. Setzer, Deputy  
Larry D. Hoium, Anoka County Surveyor

2065464.001

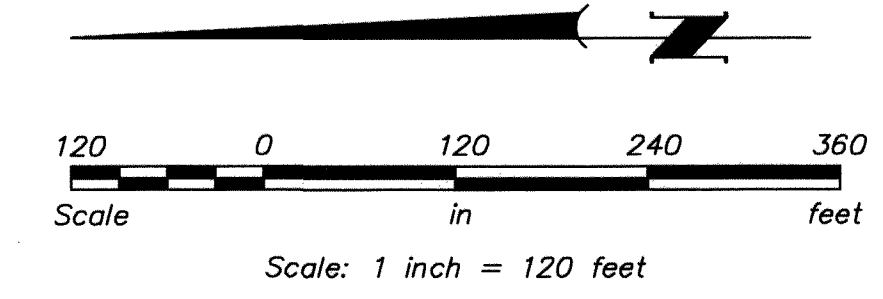
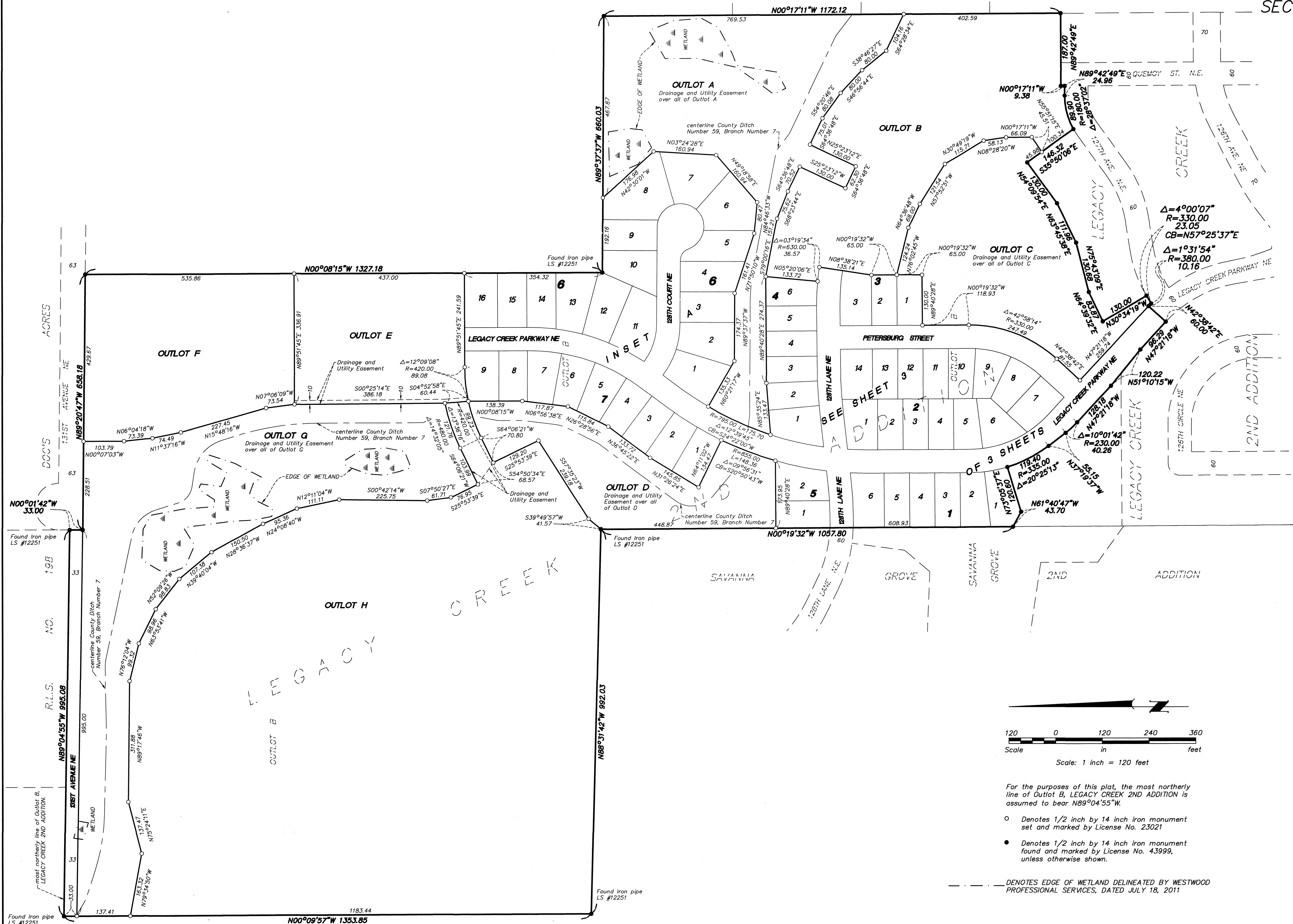
Office of RECORDER/REGISTRAR  
OF TITLES  
STATE OF MINNESOTA COUNTY OF ANOKA  
I hereby certify that the within instrument was filed in  
this office for record on the 31<sup>st</sup> day of  
July, 2013 at 11:20 o'clock AM  
and was duly recorded in book 76 Abs# page  
32  
[Signature]  
Recorder/Registrar of Titles  
By [Signature]  
Deputy

I HEREBY CERTIFY THAT THE CURRENT AND  
DELINQUENT TAXES ON THE LANDS DESCRIBED  
WITHIN ARE PAID AND THE TRANSFER IS  
ENTERED July 31 2013  
[Signature]  
PROPERTY TAX ADMINISTRATOR  
BY [Signature]  
DEPUTY

\$56.00

# PRESERVE AT LEGACY CREEK

CITY OF BLAINE  
COUNTY OF ANOKA  
SEC. 2&3, T. 31, R. 23  
Book 76 Abst pg 32



For the purposes of this plat, the most northerly line of Outlot B, LEGACY CREEK 2ND ADDITION is assumed to bear N89°04'55"W.

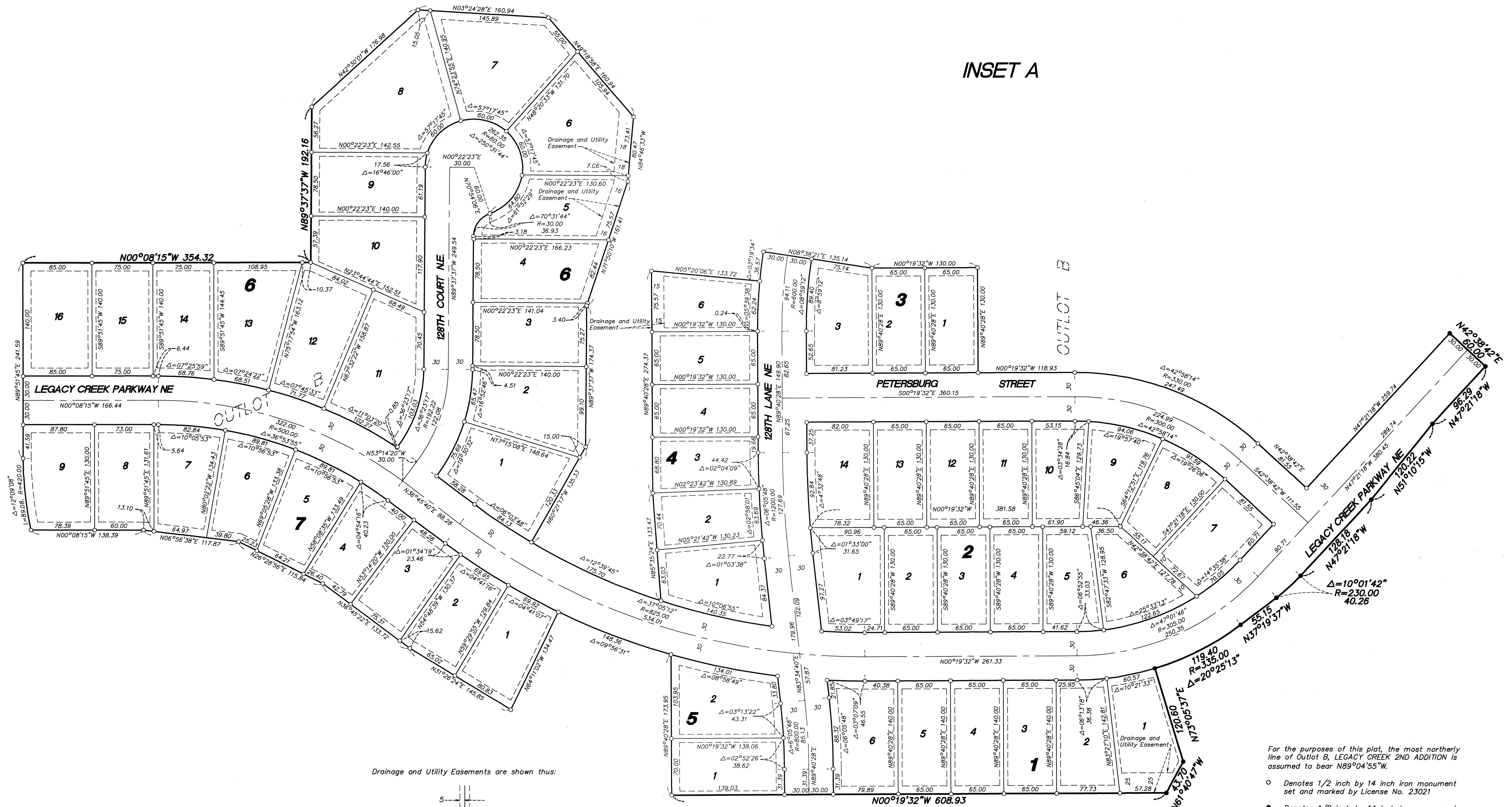
- Denotes 1/2 inch by 14 inch iron monument set and marked by License No. 23021
- Denotes 1/2 inch by 14 inch iron monument found and marked by License No. 43999, unless otherwise shown.

--- DENOTES EDGE OF WETLAND DELINEATED BY WESTWOOD PROFESSIONAL SERVICES, DATED JULY 18, 2011

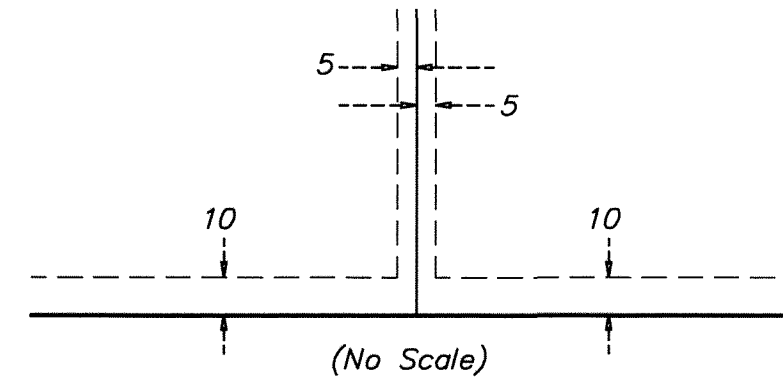
# PRESERVE AT LEGACY CREEK

CITY OF BLAINE  
COUNTY OF ANOKA  
SEC. 2&3, T. 31, R. 23  
Book 76 Abst pg 32

INSET A



Drainage and Utility Easements are shown thus:



Being 5 feet in width, unless otherwise indicated, and adjoining lot lines, and 10 feet in width and adjoining right-of-way lines and rear lot lines as shown on this plat.

For the purposes of this plat, the most northerly line of Outlot B, LEGACY CREEK 2ND ADDITION is assumed to bear N89°04'55"W.

- Denotes 1/2 inch by 14 inch iron monument set and marked by License No. 23021
- Denotes 1/2 inch by 14 inch iron monument found and marked by License No. 43999, unless otherwise noted.

