

PRESERVE AT LOCKE PARK 2ND ADDITION

CITY OF FRIDLEY
COUNTY OF ANOKA
SEC. 11, TWP. 30, RGE. 24

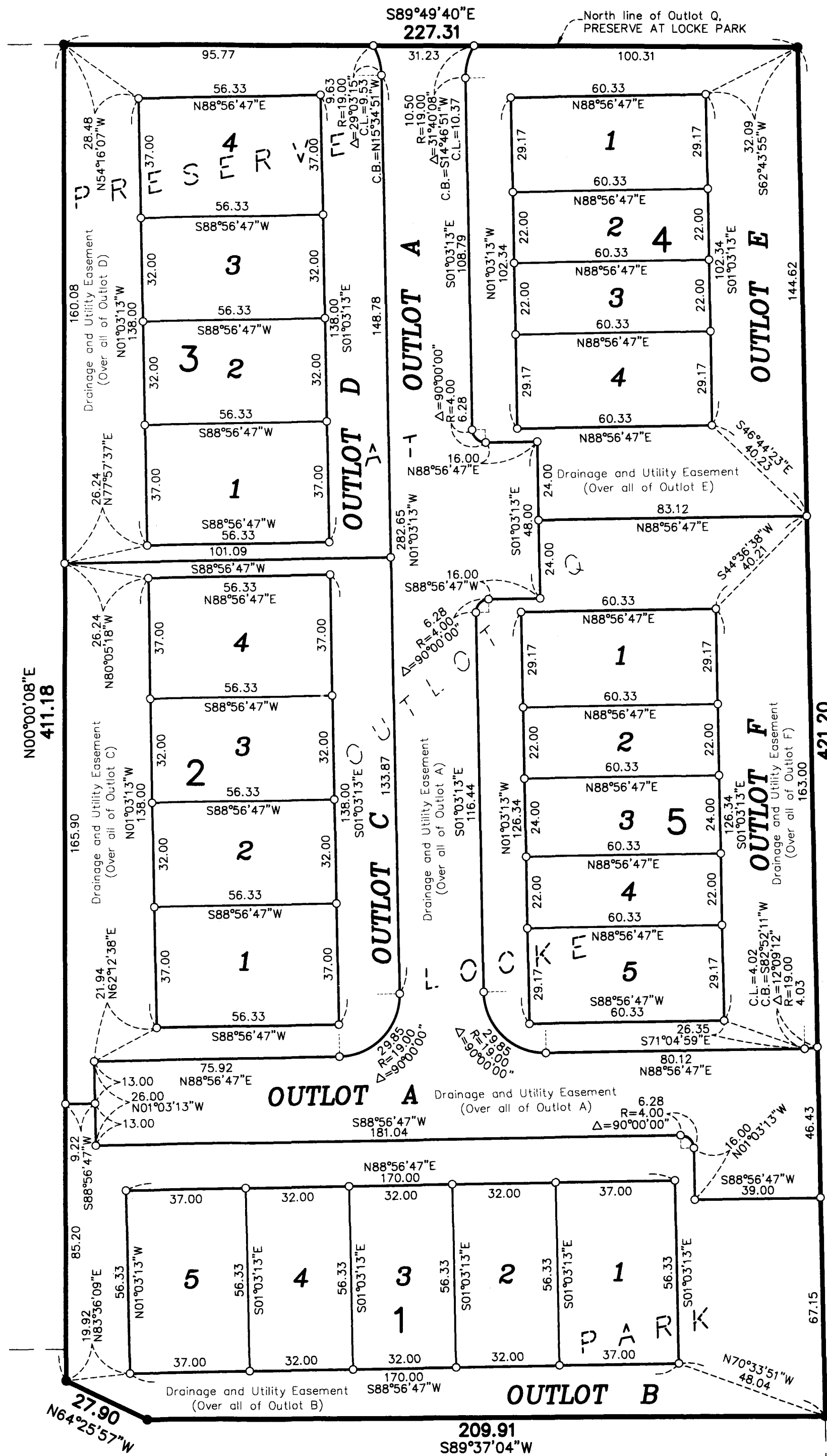
NORTHCO BUSINESS PARK
3RD ADDITION

NORTH CENTRAL
BUSINESS PARK

54

71ST AVENUE NE

54



60

KNOW ALL PERSONS BY THESE PRESENTS: That U.S. Home Corporation, a Delaware corporation, owners and proprietors of the following described property:

Outlot Q, PRESERVE AT LOCKE PARK, according to the recorded plat thereof, Anoka County, Minnesota

Has caused the same to be surveyed and platted as PRESERVE AT LOCKE PARK 2ND ADDITION and does hereby dedicate to the public for public use the drainage and utility easements as shown on this plat.

In witness whereof said U.S. Home Corporation, a Delaware corporation, has caused these presents to be signed by its proper officer this 27 day of January 2020

U.S. HOME CORPORATION

Jon Aune
Jon Aune, Vice President

STATE OF Minnesota
COUNTY OF Hennepin

This instrument was acknowledged before me on January 27, 2020 by Jon Aune, Vice President of U.S. Home Corporation, a Delaware corporation, on behalf of the corporation.

I, Thomas R. Balluff do hereby certify that this plat was prepared by me or under my direct supervision; that I am a duly Licensed Land Surveyor in the State of Minnesota; that this plat is a correct representation of the boundary survey; that all mathematical data and labels are correctly designated on this plat; that all monuments depicted on this plat have been, or will be correctly set within one year; that all water boundaries and wet lands, as defined in Minnesota Statutes, Section 505.01, Subd. 3, as of the date of this certificate are shown and labeled on this plat; and all public ways are shown and labeled on this plat.

Dated this 23rd day of JANUARY 2020

Thomas R. Balluff
Thomas R. Balluff, Licensed Land Surveyor
Minnesota License No. 40361

STATE OF Minnesota
COUNTY OF Anoka

This instrument was acknowledged before me on 23rd January, 2020 by Thomas R. Balluff.

Cynthia J. Morical (Signed)
Cynthia J. Morical (Printed)
Notary Public, Hennepin County, Minnesota
My commission expires January 31, 2020

CITY COUNCIL, CITY OF FRIDLEY, MINNESOTA

This plat of PRESERVE AT LOCKE PARK 2ND ADDITION was approved and accepted by the City Council of the City of Fridley, Minnesota at a regular meeting thereof held this 24 day of February, 2020 and said plat is in compliance with the provisions of Minnesota Statutes, Section 505.03, Subd. 2.

CITY COUNCIL, CITY OF FRIDLEY, MINNESOTA

By: *Scott J. Lund* Mayor

By: *Scott J. Lund* Clerk

COUNTY SURVEYOR

I hereby certify that in accordance with Minnesota Statutes, Section 505.021, Subd. 11, this plat has been reviewed and approved this 16th day of August, 2020

Charles F. Gilzen
Charles F. Gilzen
Anoka County Surveyor

COUNTY AUDITOR/TREASURER

Pursuant to Minnesota Statutes, Section 505.021, Subd. 9, taxes payable in the year 2020 on the land hereinbefore described have been paid. Also, pursuant to Minnesota Statutes, Section 272.12, there are no delinquent taxes and transfer entered this 10th day of August, 2020

Pamela J. LeBlanc
Pamela J. LeBlanc
Property Tax Administrator
By: *Scott J. Lund* Deputy

COUNTY RECORDER/REGISTRAR OF TITLES

County of Anoka, State of Minnesota

I hereby certify that this plat of PRESERVE AT LOCKE PARK 2ND ADDITION was filed in the office of the County Recorder/Registrar of Titles for public record on this 04th day of August, 2020 at 1:21 o'clock P.M. and was duly recorded as Document Number 516876.002

Pamela J. LeBlanc
Pamela J. LeBlanc
County Recorder/Registrar of Titles
By: *Scott J. Lund* Deputy

PRESERVE AT
LOCKE PARK

For the purposes of this plat, the North line of Outlot Q, PRESERVE AT LOCKE PARK is assumed to have a bearing of South 89 degrees 49 minutes 40 seconds East.

- Denotes 5/8 inch by 14 inch Rebar, set or to be set within one year of recording of this plat and marked with license number 40361
- Denotes Found 5/8 inch by 14 inch Rebar marked with license number 40361

