

PRESERVE AT LOCKE PARK

CITY OF FRIDLEY
COUNTY OF ANOKA
SEC. 11, TWP. 30, RGE. 24

KNOW ALL PERSONS BY THESE PRESENTS: That the Housing and Redevelopment Authority in and for the City of Fridley, Minnesota, a political subdivision under the laws of the State of Minnesota, owner and proprietor of the following described property:

Outlots A, B, and D, LOCKE PARK POINTE, according to the recorded plat thereof, Anoka County, Minnesota

And that U.S. Home Corporation, a Delaware corporation, owner of the following described property:

Outlot C, LOCKE PARK POINTE, according to the recorded plat thereof, Anoka County, Minnesota

Have caused the same to be surveyed and platted as PRESERVE AT LOCKE PARK and do hereby dedicate to the public for public use the public way and the drainage and utility easements as shown on this plat.

In witness whereof said the Housing and Redevelopment Authority in and for the City of Fridley, Minnesota, a political subdivision under the laws of the State of Minnesota, has caused these presents to be signed by its proper officers this 10th day of September, 2019.

HOUSING AND REDEVELOPMENT AUTHORITY IN AND FOR THE CITY OF FRIDLEY, MINNESOTA,
A POLITICAL SUBDIVISION UNDER THE LAWS OF THE STATE OF MINNESOTA

William B. Holm
William B. Holm, Chairperson

Walter T. Wysopal
Walter T. Wysopal, Executive Director

STATE OF Minnesota
COUNTY OF Anoka

This instrument was acknowledged before me on September 10, 2019 by William B. Holm, Chairperson of the Housing and Redevelopment Authority in and for the City of Fridley, Minnesota, a political subdivision under the laws of the State of Minnesota.

Julianne M. Beberg (Signed)
Julianne M. Beberg (Printed)
Notary Public, Minnesota
My commission expires 1-31-2020

STATE OF Minnesota
COUNTY OF Anoka

This instrument was acknowledged before me on September 10, 2019 by Walter T. Wysopal, Executive Director of the Housing and Redevelopment Authority in and for the City of Fridley, Minnesota, a political subdivision under the laws of the State of Minnesota.

Julianne M. Beberg (Signed)
Julianne M. Beberg (Printed)
Notary Public, Minnesota
My commission expires 1-31-2020

In witness whereof said U.S. Home Corporation, a Delaware corporation, has caused these presents to be signed by its proper officer this 11 day of SEPTEMBER, 2019.

U.S. HOME CORPORATION

Jon Aune
Jon Aune, Division Vice President

STATE OF Minnesota
COUNTY OF Hennepin

This instrument was acknowledged before me on September 11, 2019 by Jon Aune, Division Vice President of U.S. Home Corporation, a Delaware corporation, on behalf of the corporation.

Danika Shabunya (Signed)
Danika Shabunya (Printed)
Notary Public, Minnesota
My commission expires January 31, 2024

I Thomas R. Balluff do hereby certify that this plat was prepared by me or under my direct supervision; that I am a duly Licensed Land Surveyor in the State of Minnesota; that this plat is a correct representation of the boundary survey; that all mathematical data and labels are correctly designated on this plat; that all monuments depicted on this plat have been, or will be correctly set within one year; that all water boundaries and wet lands, as defined in Minnesota Statutes, Section 505.01, Subd. 3, as of the date of this certificate are shown and labeled on this plat; and all public ways are shown and labeled on this plat.

Dated this 16th day of JULY, 2019.

Thomas R. Balluff
Thomas R. Balluff, Licensed Land Surveyor
Minnesota License No. 40361

STATE OF Minnesota
COUNTY OF Anoka

This instrument was acknowledged before me on July 16, 2019 by Thomas R. Balluff.

Cynthia J. Morical (Signed)
Cynthia J. Morical (Printed)
Notary Public, Hennepin County, Minnesota
My commission expires January 31, 2020

CITY COUNCIL, CITY OF FRIDLEY, MINNESOTA

This plat of PRESERVE AT LOCKE PARK was approved and accepted by the City Council of the City of Fridley, Minnesota at a regular meeting thereof held this 24th day of JUNE, 2019, and said plat is in compliance with the provisions of Minnesota Statutes, Section 505.03, Subd. 2.

CITY COUNCIL, CITY OF FRIDLEY, MINNESOTA

By: Scott Lund Mayor

By: Debra Johnson Clerk

COUNTY SURVEYOR

I hereby certify that in accordance with Minnesota Statutes, Section 505.021, Subd. 11, this plat has been reviewed and approved this 1st day of October, 2019.

By: Charles F. Gitzen
Charles F. Gitzen
Anoka County Surveyor

COUNTY AUDITOR/TREASURER

Pursuant to Minnesota Statutes, Section 505.021, Subd. 9, taxes payable in the year 2019 on the land hereinbefore described have been paid. Also, pursuant to Minnesota Statutes, Section 272.12, there are no delinquent taxes and transfer entered this 9th day of October, 2019.

Jonell M. Sawyer
Property Tax Administrator
By: J. Patterson Deputy

COUNTY RECORDER/REGISTRAR OF TITLES

County of Anoka, State of Minnesota

I hereby certify that this plat of PRESERVE AT LOCKE PARK was filed in the office of the County Recorder/Registrar of Titles for public record on this 8th day of October, 2019, at 13:00 o'clock P.M. and was duly recorded as Document Number 568738-004.

Jonell M. Sawyer
County Recorder/Registrar of Titles
By: J. Patterson Deputy

\$56.00

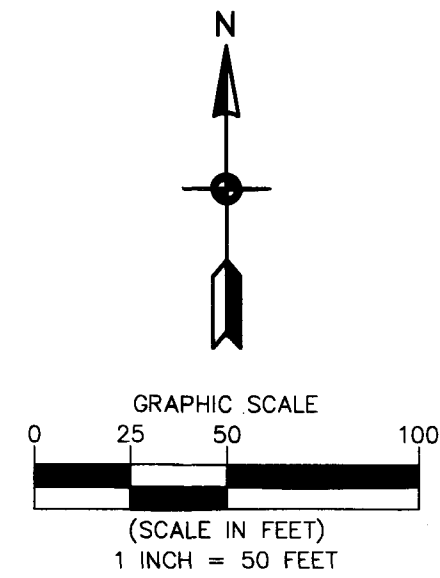


PRESERVE AT LOCKE PARK

NORTHCO BUSINESS PARK
3RD ADDITION

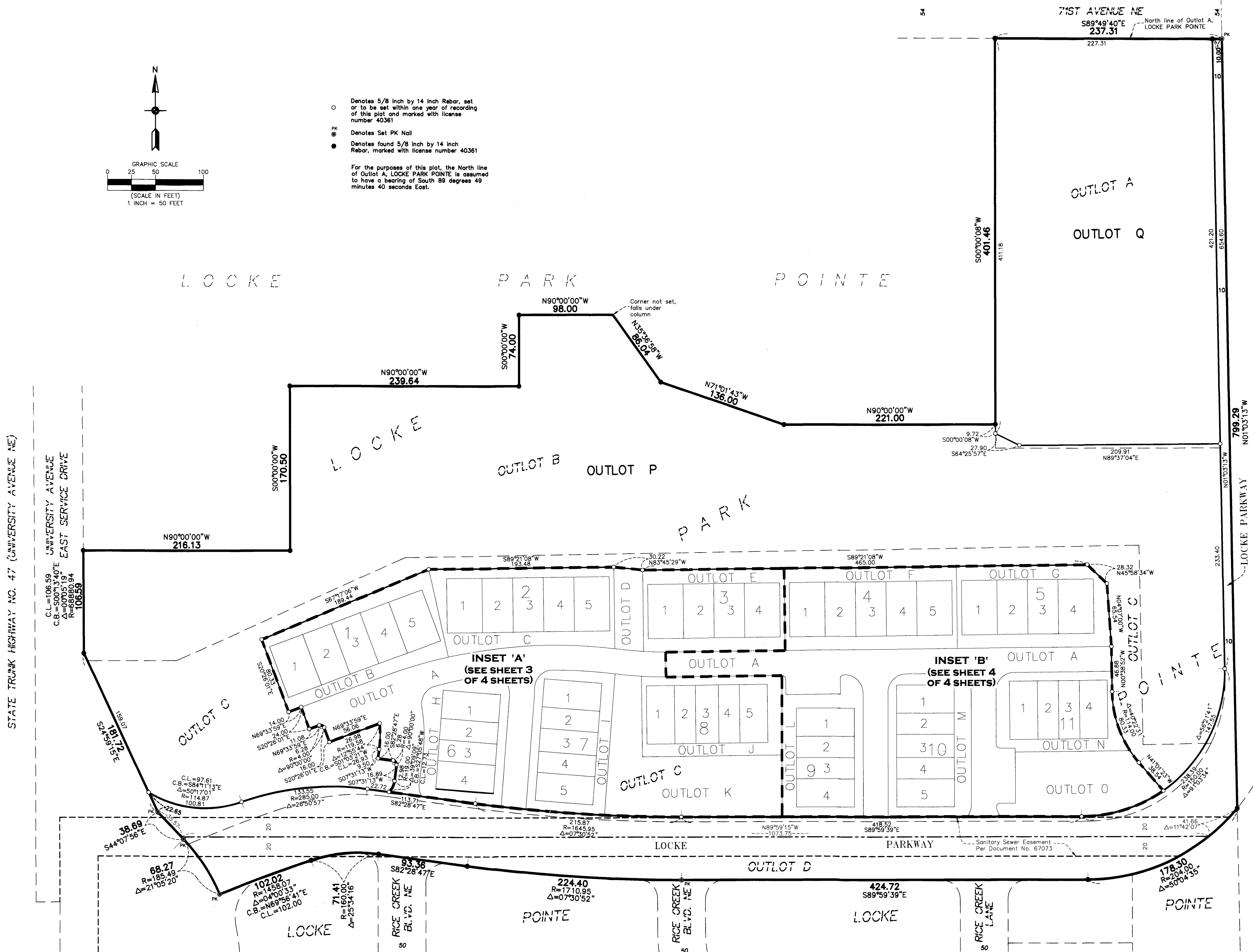
NORTH CENTRAL
BUSINESS PARK

CITY OF FRIDLEY
COUNTY OF ANOKA
SEC. 11, TWP. 30, RGE. 24



- Denotes 5/8 inch by 14 inch Rebar, set or to be set within one year of recording of this plat and marked with license number 40361
- Denotes Set PK Nail
- Denotes found 5/8 inch by 14 inch Rebar, marked with license number 40361

For the purposes of this plat, the North line of Outlot A, LOCKE PARK POINTE is assumed to have a bearing of South 89 degrees 49 minutes 40 seconds East.



STATE TRUNK HIGHWAY NO. 47 (UNIVERSITY AVENUE NE)
 C.L.=106.59
 UNIVERSITY AVENUE
 C.B.=S00°17'40"E
 EAST SERVICE DRIVE
 R=68880.94
 Δ=106.59

68.27
 R=185.49
 Δ=21°05'20"

102.02
 R=145.07
 Δ=04°00'33"
 C.B.=N69°56'41"E
 C.L.=102.00

71.41
 R=160.00
 Δ=25°34'16"

93.36
 S82°28'47"E
 RICE CREEK
 BLVD. NE

224.40
 R=1710.95
 Δ=07°30'52"

424.72
 S89°59'39"E
 RICE CREEK
 LANE

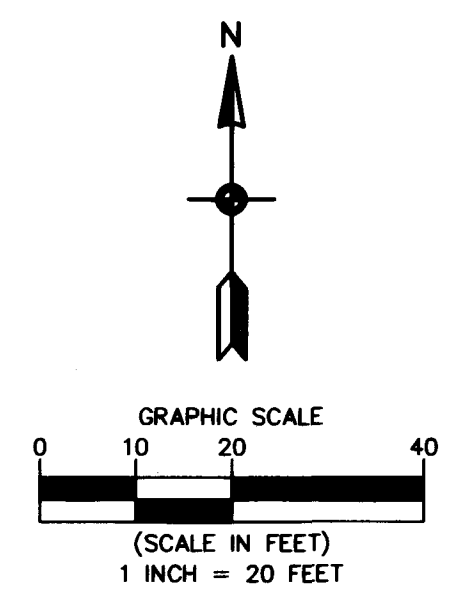
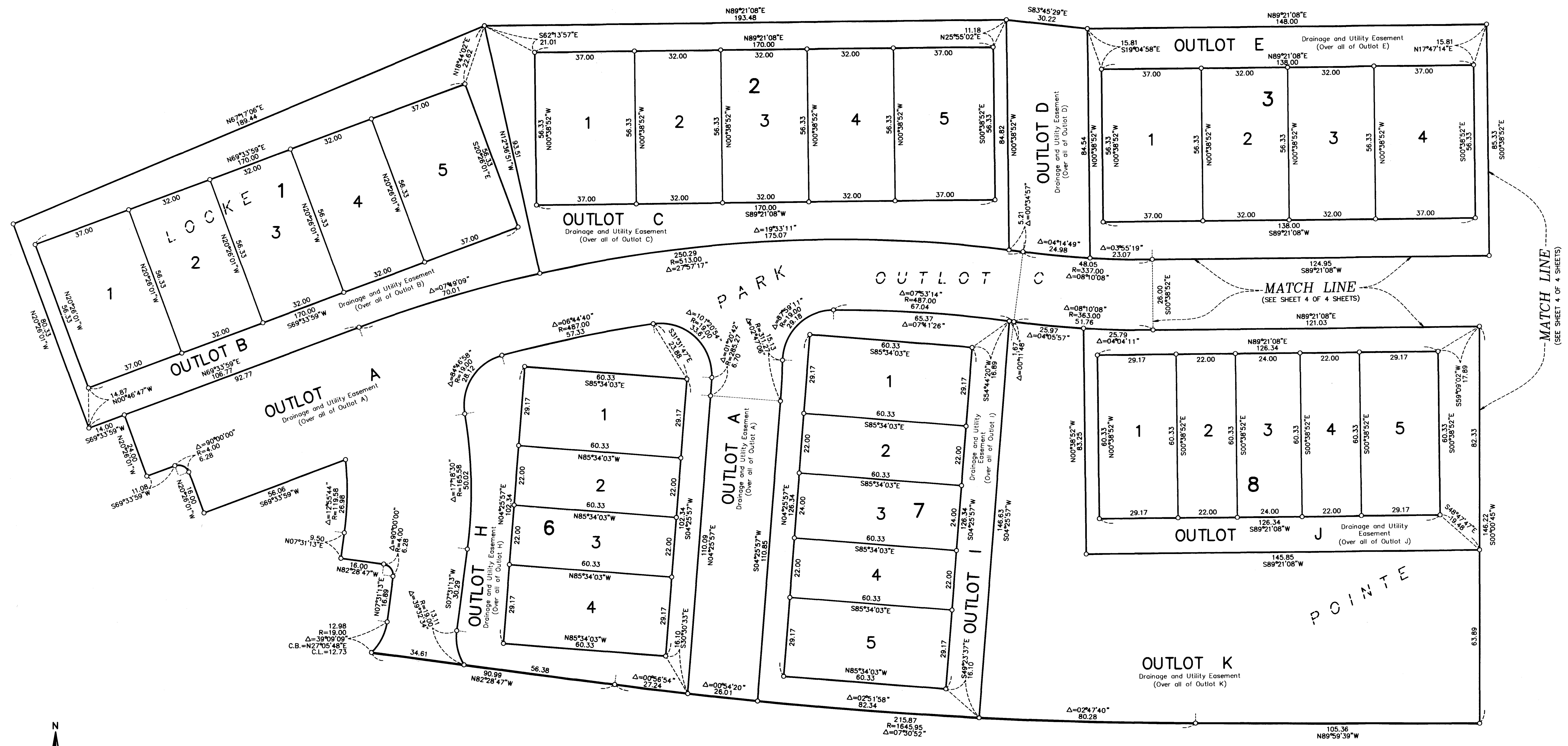
178.50
 R=204.90
 Δ=50°04'35"



PRESERVE AT LOCKE PARK

CITY OF FRIDLEY
COUNTY OF ANOKA
SEC. 11, TWP. 30, RGE. 24

INSET 'A'



For the purpose of this plat, the North line of Outlot A, LOCKE PARK POINTE is assumed to have a bearing of South 89 degrees 40 minutes 40 seconds East.

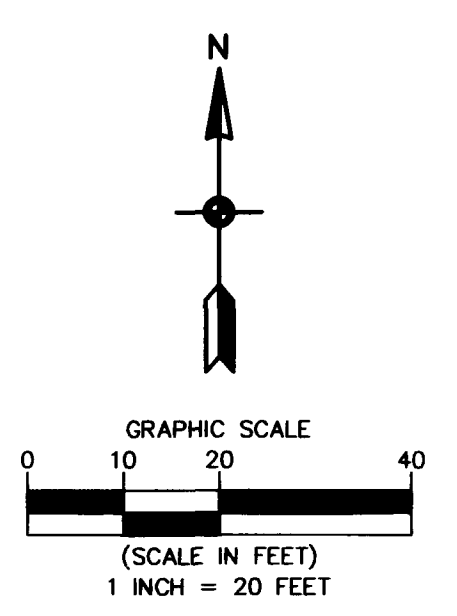
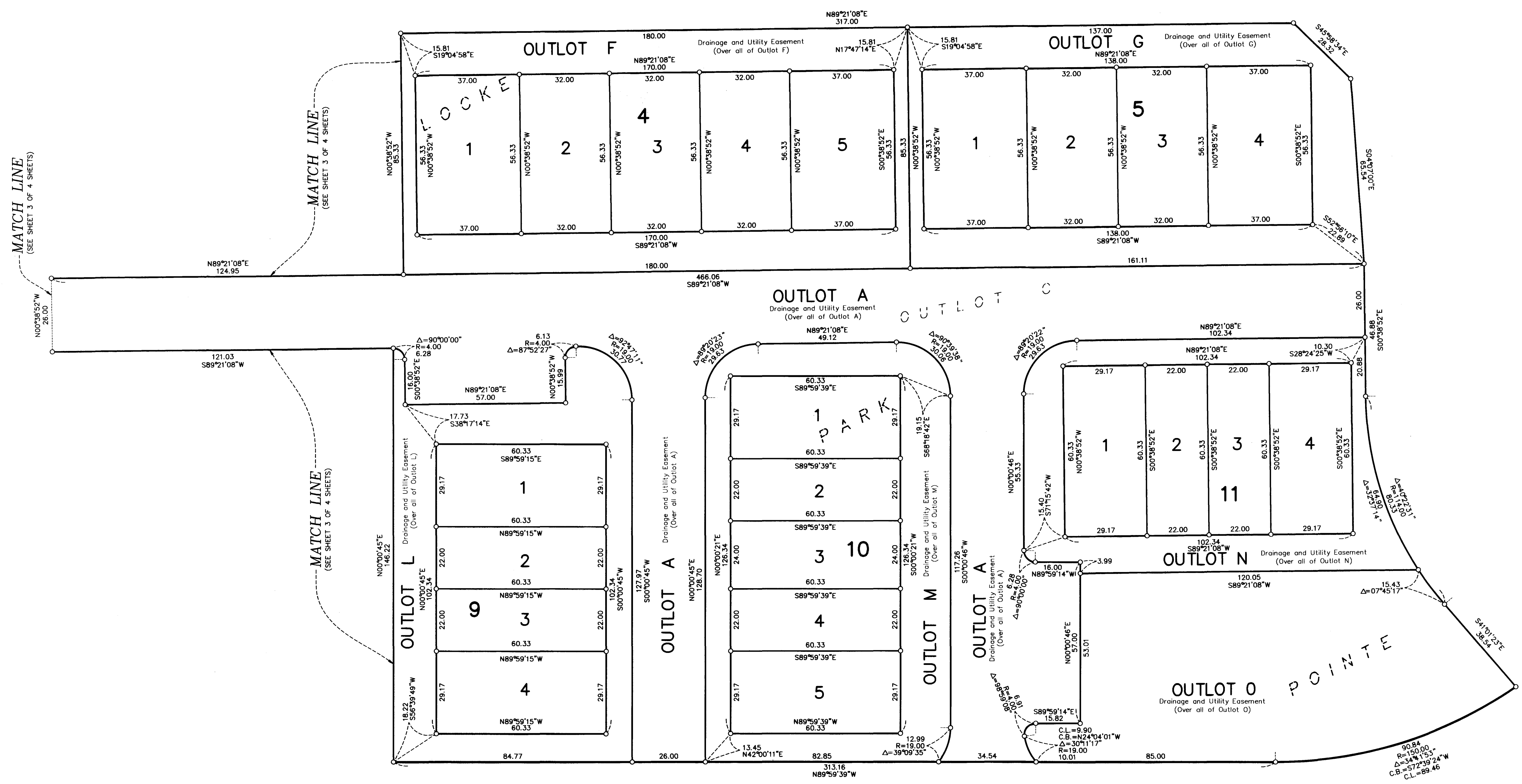
○ Denotes 5/8 inch by 14 inch Rebar, set or to be set within one year of recording of this plat and marked with license number 40361



PRESERVE AT LOCKE PARK

CITY OF FRIDLEY
COUNTY OF ANOKA
SEC. 11, TWP. 30, RGE. 24

INSET 'B'



For the purposes of this plot, the North line of Outlot A, LOCKE PARK POINTE is assumed to have a bearing of South 89 degrees 49 minutes 40 seconds East.

○ Denotes 5/8 inch by 14 inch Rebar, set or to be set within one year of recording of this plot and marked with license number 40361

