

PRESERVE AT OAK VIEW

BK 79 of Abst
Pg 38

City of Andover
County of Anoka
Sec. 13, T. 32, R. 24

KNOW ALL PERSONS BY THESE PRESENTS: That Metrowide Development, LLC, a Minnesota limited liability company, owner of the following described property:

That part of the Northeast Quarter of the Northwest Quarter of Section 13, Township 32, Range 24, Anoka County, Minnesota, lying west of the East 316.45 feet thereof.

Has caused the same to be surveyed and platted as PRESERVE AT OAK VIEW and does hereby dedicate to the public for public use the public way and the drainage and utility easements as created by this plat.

In witness whereof said Metrowide Development, LLC, a Minnesota limited liability company, has caused these presents to be signed by its proper officer this 3rd day of November, 2016

METROWIDE DEVELOPMENT, LLC

Jason Osberg
Jason Osberg Its Chief Manager

STATE OF MINNESOTA
COUNTY OF _____

This instrument was acknowledged before me this 3rd day of November, 2016 by Jason Osberg its Chief Manager of Metrowide Development, LLC, a Minnesota limited liability company, on behalf of the company.

Brenda J. Fildes
Brenda J. Fildes
Notary Public, Anoka County, Minnesota
My Commission Expires 11/31/2021

I Eric B. Lindgren do hereby certify that this plat was prepared by me or under my direct supervision; that I am a duly Licensed Land Surveyor in the State of Minnesota; that this plat is a correct representation of the boundary survey; that all mathematical data and labels are correctly designated on this plat; that all monuments depicted on this plat have been, or will be correctly set within one year; that all water boundaries and wet lands, as defined in Minnesota Statutes, Section 505.01, Subd. 3, as of the date of this certificate are shown and labeled on this plat; and all public ways are shown and labeled on this plat.

Dated this 13th day of OCTOBER, 2016

E.B.L.
Eric B. Lindgren, Licensed Land Surveyor
Minnesota License No. 48176

STATE OF MINNESOTA
COUNTY OF HENNEPIN

This instrument was acknowledged before me this 13th day of October, 2016 by Eric B. Lindgren.

Mary Blair Stog
Mary Blair Stog
Notary Public, Dallas County, Minnesota
My Commission Expires 01/31/2017

CITY COUNCIL, CITY OF ANDOVER, MINNESOTA

This plat of PRESERVE AT OAK VIEW was approved and accepted by the City Council of the City of Andover, Minnesota at a regular meeting thereof held this 4th day of OCTOBER, 2016, and said plat is in compliance with the provisions of Minnesota Statutes, Section 505.03, Subd. 2.

CITY COUNCIL, CITY OF ANDOVER, MINNESOTA

By: Julie Orude Mayor
By: [Signature] Clerk

ANOKA COUNTY SURVEYOR

I hereby certify that in accordance with Minnesota Statutes, Section 505.021, Subd. 11, this plat has been reviewed and approved this 3rd day of November, 2016.

By Larry D. Hoium by Charles F. Suter, Deputy
Larry D. Hoium
Anoka County Surveyor

ANOKA COUNTY AUDITOR/TREASURER

Pursuant to Minnesota Statutes, Section 505.021, Subd. 9, taxes payable in the year 2016, on the land hereinbefore described have been paid. Also, pursuant to Minnesota Statutes, Section 272.12, there are no delinquent taxes and transfer entered this 3rd day of November, 2016.

Jonell M. Sawyer
Property Tax Administrator

By Mary Windberger Deputy

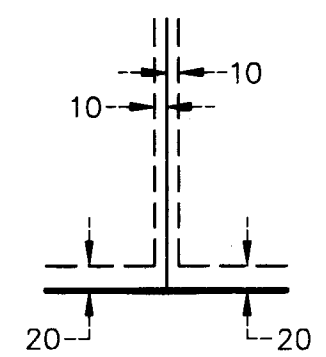
ANOKA COUNTY RECORDER/REGISTRAR OF TITLES

I hereby certify that this plat of PRESERVE AT OAK VIEW was filed in the office of the County Recorder/Registrar of Titles for public record on this 3rd day of November, 2016 at 12:07 o'clock P.M. and was duly recorded in Book 79 of Abst Page 38, as Document Number 2154006.003

Jonell M. Sawyer
County Recorder/Registrar of Titles

By Mary Windberger Deputy

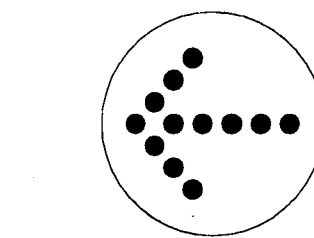
DRAINAGE AND UTILITY EASEMENTS
ARE SHOWN THUS:
(NOT TO SCALE)



BEING 10 FEET IN WIDTH AND ADJOINING
SIDE AND REAR LOT LINES, UNLESS
OTHERWISE SHOWN AND 20 FEET IN WIDTH
AND ADJOINING STREET LINES UNLESS
OTHERWISE SHOWN ON THE PLAT.

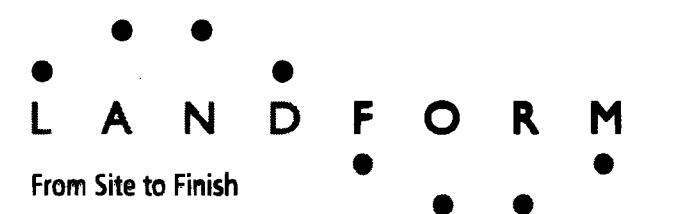
- DENOTES 1/2 INCH IRON PIPE MONUMENT FOUND.
- DENOTES 1/2 INCH BY 14 INCH IRON PIPE MONUMENT SET AND MARKED BY LICENSE NO. 48176.

BEARINGS SHOWN ARE BASED UPON THE NORTH
LINE OF THE NORTHEAST QUARTER OF THE
NORTHWEST QUARTER OF SECTION 13, TOWNSHIP
32, RANGE 24 WHICH HAS AN ASSUMED BEARING
OF S89°26'35"E.



NORTH
1 INCH = 60 FEET
SCALE IN FEET
0 60 120

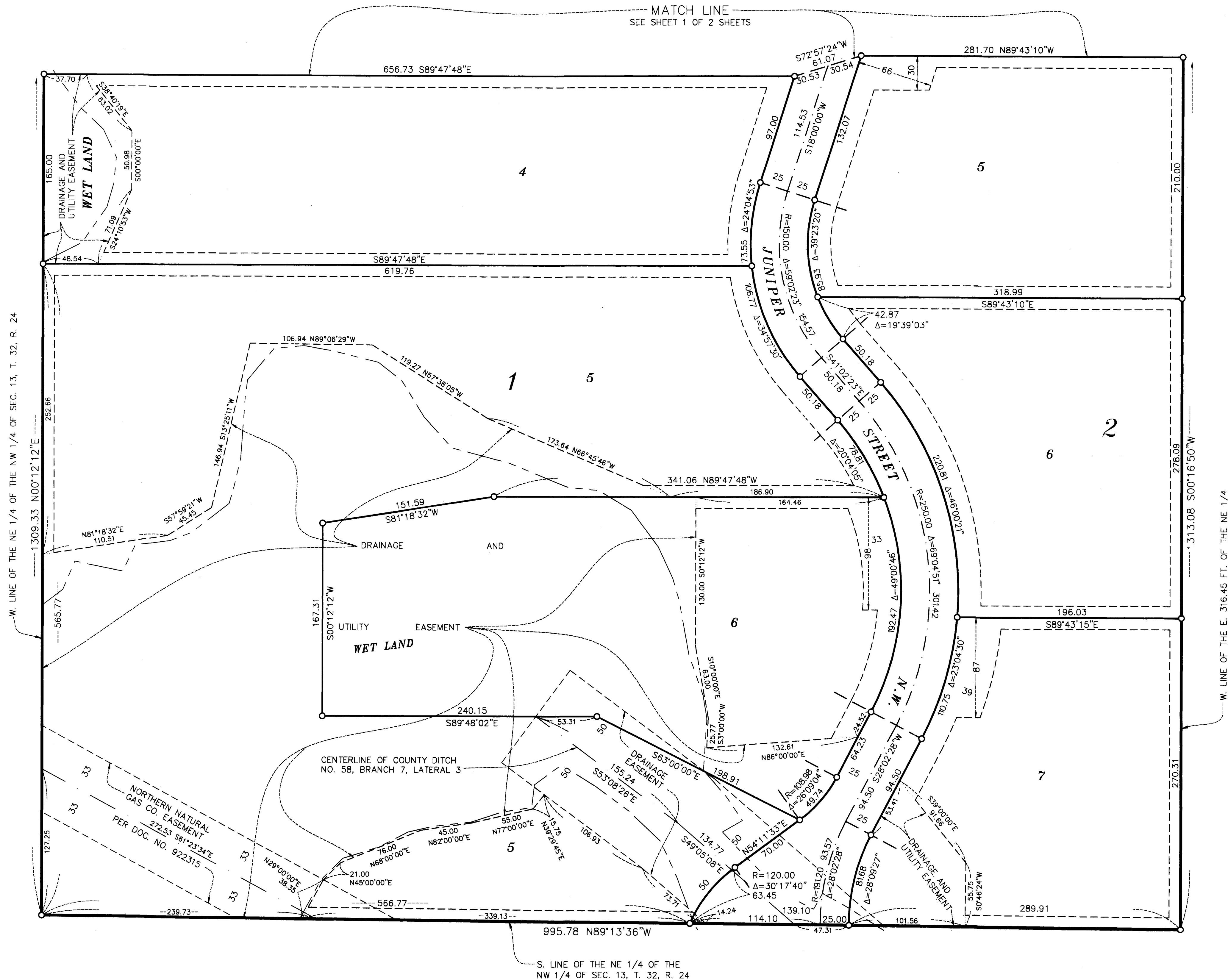
\$56.00



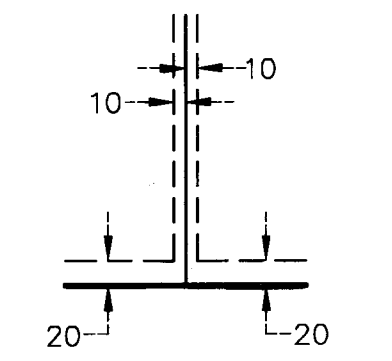
PRESERVE AT OAK VIEW

BK 79 of Abst Pg 38

City of Andover
County of Anoka
Sec. 13, T. 32, R. 24



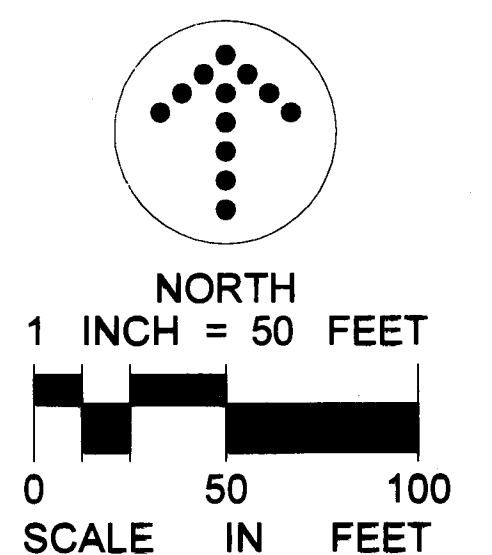
DRAINAGE AND UTILITY EASEMENTS ARE SHOWN THUS: (NOT TO SCALE)



BEING 10 FEET IN WIDTH AND ADJOINING SIDE AND REAR LOT LINES, UNLESS OTHERWISE SHOWN AND 20 FEET IN WIDTH AND ADJOINING STREET LINES UNLESS OTHERWISE SHOWN ON THE PLAT.

O DENOTES 1/2 INCH BY 14 INCH IRON PIPE MONUMENT SET AND MARKED BY LICENSE NO. 48176.

BEARINGS SHOWN ARE BASED UPON THE NORTH LINE OF THE NORTHEAST QUARTER OF THE NORTHWEST QUARTER OF SECTION 13, TOWNSHIP 32, RANGE 24 WHICH HAS AN ASSUMED BEARING OF S89°26'35"E.



LANDFORM
From Site to Finish