

QUAIL CREEK 10TH ADDITION

CITY OF BLAINE
COUNTY OF ANOKA
SECTIONS 3 & 4, TWP. 31, RGE. 23

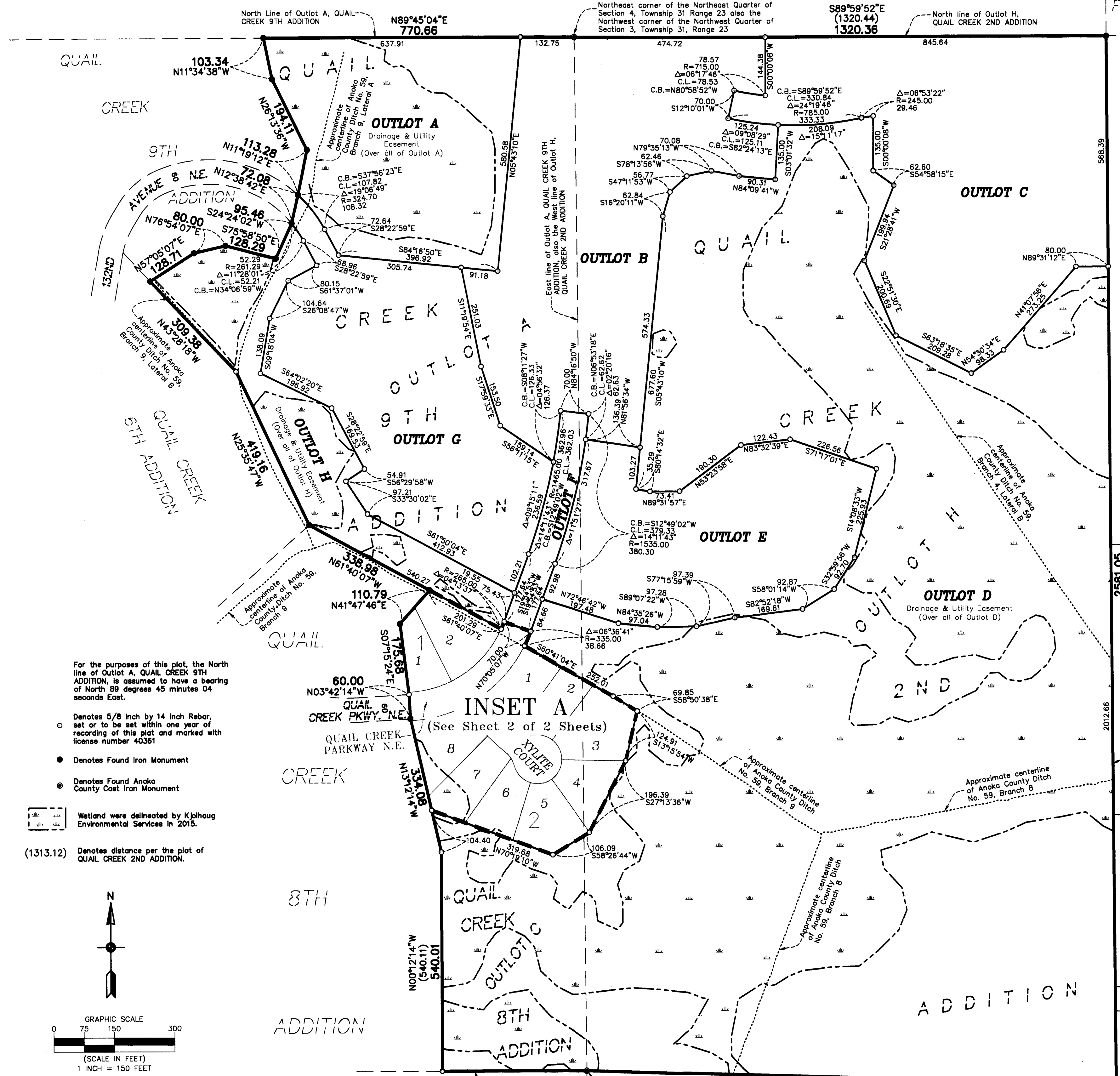
TWIN BIRCH ACRES

HIDDEN
FOREST
WEST

WAGAMON RANCH
2ND ADDITION

HARPERS
WEST

SPRINGBROOK



KNOW ALL PERSONS BY THESE PRESENTS: That PSG Meridian, LLC, a Wyoming limited liability company, owner of the following described property:

Outlot H, QUAIL CREEK 2ND ADDITION, according to the recorded plat thereof, Anoka County, Minnesota
AND
Outlot C, QUAIL CREEK 8TH ADDITION, according to the recorded plat thereof, Anoka County, Minnesota
AND
Outlot A, QUAIL CREEK 9TH ADDITION, according to the recorded plat thereof, Anoka County, Minnesota

Has caused the same to be surveyed and platted as QUAIL CREEK 10TH ADDITION and does hereby dedicate to the public for public use the public ways and the drainage and utility easements as created by this plat.

In witness whereof said PSG Meridian, LLC, a Wyoming limited liability company, has caused these presents to be signed by its proper officer this 29th day of September, 2017.

PSG MERIDIAN, LLC
[Signature]
Paul S. Gagnon, Chief Manager

STATE of Minnesota
COUNTY of Anoka
This instrument was acknowledged before me on September 29th, 2017 by Paul S. Gagnon, Chief Manager of PSG Meridian, LLC, a Wyoming limited liability company.

Cynthia J. Morical
Cynthia J. Morical
Notary Public, Hennepin County, MN
My commission expires January 31, 2020

I, Thomas R. Balluff do hereby certify that this plat was prepared by me or under my direct supervision; that I am a duly Licensed Land Surveyor in the State of Minnesota; that this plat is a correct representation of the boundary survey, that all mathematical data and labels are correctly designated on this plat; that all monuments depicted on this plat have been, or will be correctly set within one year; that all water boundaries and wet lands, as defined in Minnesota Statutes, Section 505.01, Subd. 3, as of the date of this certificate are shown and labeled on this plat; and all public ways are shown and labeled on this plat.

Dated this 15th day of SEPTEMBER, 2017.

Thomas R. Balluff
Thomas R. Balluff, Licensed Land Surveyor,
Minnesota License No. 40361

STATE of Minnesota
COUNTY of Anoka
This instrument was acknowledged before me on September 15, 2017 by Thomas R. Balluff.

Cynthia J. Morical
Cynthia J. Morical
Notary Public, Hennepin County, MN
My commission expires January 31, 2020

CITY COUNCIL, CITY OF BLAINE, MINNESOTA
This plat of QUAIL CREEK 10TH ADDITION was approved and accepted by the City Council of the City of Blaine, Minnesota at a regular meeting thereof held this 14th day of September, 2017, and said plat is in compliance with the provisions of Minnesota Statutes, Section 505.03, Subd. 2.

CITY COUNCIL, CITY OF BLAINE, MINNESOTA
By: [Signature] Mayor
By: [Signature] Clerk

COUNTY SURVEYOR
I hereby certify that in accordance with Minnesota Statutes, Section 505.021, Subd. 11, this plat has been reviewed and approved this 5th day of OCTOBER, 2017.

By: Larry D. Holm
Larry D. Holm, Anoka County Surveyor

COUNTY AUDITOR/TREASURER
Pursuant to Minnesota Statutes, Section 505.021, Subd. 9, taxes payable in the year 2017 on the land hereinbefore described have been paid. Also, pursuant to Minnesota Statutes, Section 272.12, there are no delinquent taxes and transfer entered this 5 day of October, 2017.

Jonell M Sawyer
Property Tax Administrator
By: [Signature] Deputy

COUNTY RECORDER/REGISTRAR OF TITLES
County of Anoka, State of Minnesota

I hereby certify that this plat of QUAIL CREEK 10TH ADDITION was filed in the office of the County Recorder/Registrar of Titles for public record on this 5 day of October, 2017, at 11:17 o'clock A.M. and was duly recorded as Document Number 218722.002

Jonell M. Sawyer
County Recorder/Registrar of Titles
By: [Signature] Deputy

\$156

For the purposes of this plat, the North line of Outlot A, QUAIL CREEK 9TH ADDITION, is assumed to have a bearing of North 89 degrees 45 minutes 04 seconds East.

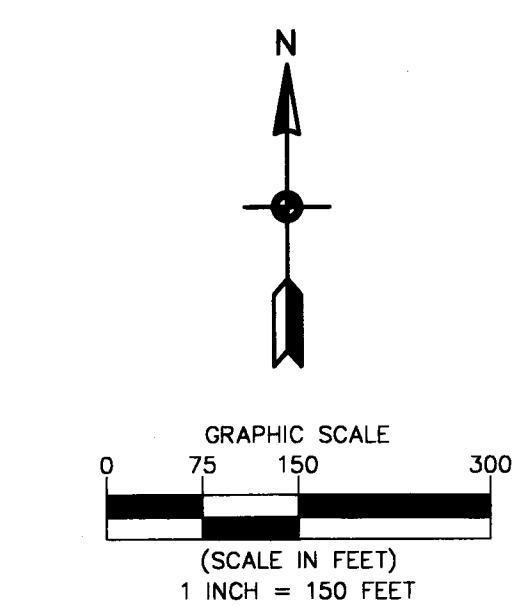
○ Denotes 5/8 inch by 14 inch Rebar, set or to be set within one year of recording of this plat and marked with license number 40361

● Denotes Found Iron Monument

● Denotes Found Anoka County Cast Iron Monument

Wetland were delineated by Kjelhaug Environmental Services in 2015.

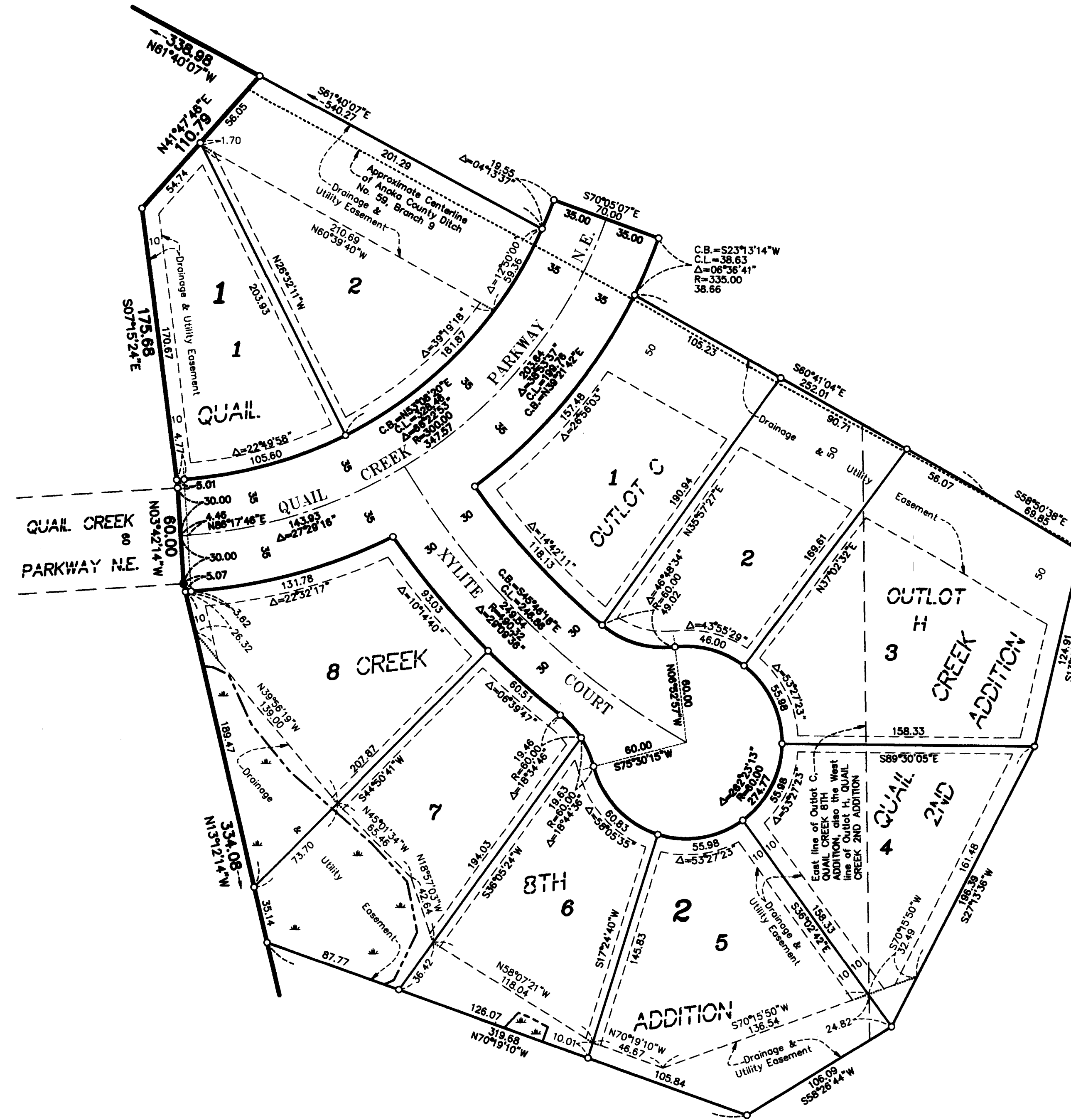
(1313.12) Denotes distance per the plat of QUAIL CREEK 2ND ADDITION.



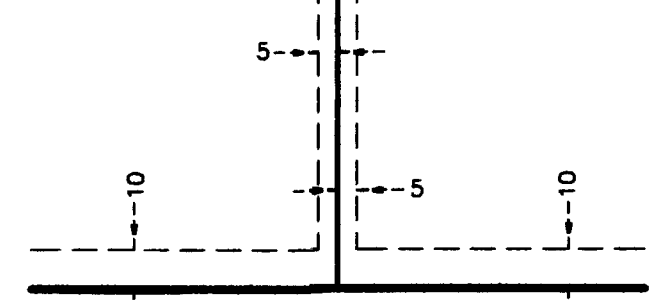
QUAIL CREEK 10TH ADDITION

CITY OF BLAINE
COUNTY OF ANOKA
SECTIONS 3 & 4, TWP. 31, RGE. 23

INSET A



DRAINAGE AND UTILITY EASEMENTS ARE SHOWN THUS:



being 5 feet in width, and adjoining side lot lines, and 10 feet in width and adjoining right of way lines and rear lot lines unless otherwise shown on this plat.

- For the purpose of this plat, the North line of Outlot A, QUAIL CREEK 9TH ADDITION, is assumed to have a bearing of North 89 degrees 45 minutes 04 seconds East.
- Denotes 5/8 inch by 14 inch Rebar, set or to be set within one year of recording of this plat and marked with license number 40351
- Denotes Found Iron Monument unless otherwise noted

Wetland were delineated by Kjolhaug Environmental Services in 2015.

