

QUAIL CREEK 11TH ADDITION

KNOW ALL PERSONS BY THESE PRESENTS: That PSG Meridian, LLC, a Wyoming limited liability company, owner of the following described property:

Outlots B, C, E and F, QUAIL CREEK 10TH ADDITION, Anoka County, Minnesota

Has caused the same to be surveyed and platted as QUAIL CREEK 11TH ADDITION and does hereby dedicate to the public for public use the public way and drainage and utility easements as shown on this plat.

In witness whereof said PSG Meridian, LLC, a Wyoming limited liability company, has caused these presents to be signed by its proper officer this 19 day of October, 2018.

PSG MERIDIAN, LLC

Paul S. Gagnon
Paul S. Gagnon, Chief Manager

STATE OF Minnesota
COUNTY OF Anoka

This instrument was acknowledged before me on 10-19-18 by Paul S. Gagnon, Chief Manager of PSG Meridian, LLC, a Wyoming limited liability company.

Desiree Stefan
Desiree Stefan
Notary Public, Anoka County
My commission expires 11/15/2018

I Thomas R. Balluff do hereby certify that this plat was prepared by me or under my direct supervision; that I am a duly Licensed Land Surveyor in the State of Minnesota; that this plat is a correct representation of the boundary survey; that all mathematical data and labels are correctly designated on this plat; that all monuments depicted on this plat have been, or will be correctly set within one year; that all water boundaries and wet lands, as defined in Minnesota Statutes, Section 505.01, Subd. 3, as of the date of this certificate are shown and labeled on this plat; and all public ways are shown and labeled on this plat.

Dated this 10th day of AUGUST, 2018.

Thomas R. Balluff
Thomas R. Balluff, Licensed Land Surveyor
Minnesota License No. 40361

STATE OF Minnesota
COUNTY OF Anoka

This instrument was acknowledged before me on August 10th, 2018 by Thomas R. Balluff.

Cynthia J. Morica
Cynthia J. Morica
Notary Public, Hennepin County, Minnesota
My commission expires January 31, 2020

CITY COUNCIL, CITY OF BLAINE, MINNESOTA

This plat of QUAIL CREEK 11TH ADDITION was approved, and accepted by the City Council of the City of Blaine, Minnesota at a regular meeting thereof held this 19th day of April, 2018, and said plat is in compliance with the provisions of Minnesota Statutes, Section 505.03, Subd. 2.

CITY COUNCIL, CITY OF BLAINE, MINNESOTA

By: Jim Ryan, Mayor

By: Catherine Peterson, Clerk

COUNTY SURVEYOR

I hereby certify that in accordance with Minnesota Statutes, Section 505.021, Subd. 11, this plat has been reviewed and approved this 19th day of October, 2018.

By: Charles F. Gitzen
Charles F. Gitzen
Anoka County Surveyor

COUNTY AUDITOR/TREASURER

Pursuant to Minnesota Statutes, Section 505.021, Subd. 9, taxes payable in the year 2018 on the land hereinbefore described have been paid. Also, pursuant to Minnesota Statutes, Section 272.12, there are no delinquent taxes and transfer entered this 19 day of October, 2018.

By: Jonell M Sawyer
Jonell M Sawyer
Property Tax Administrator
By: David E. Johnson, Deputy

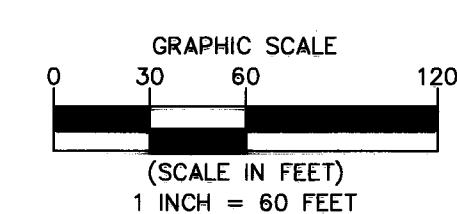
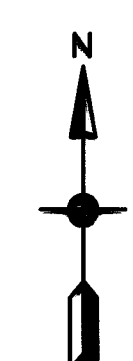
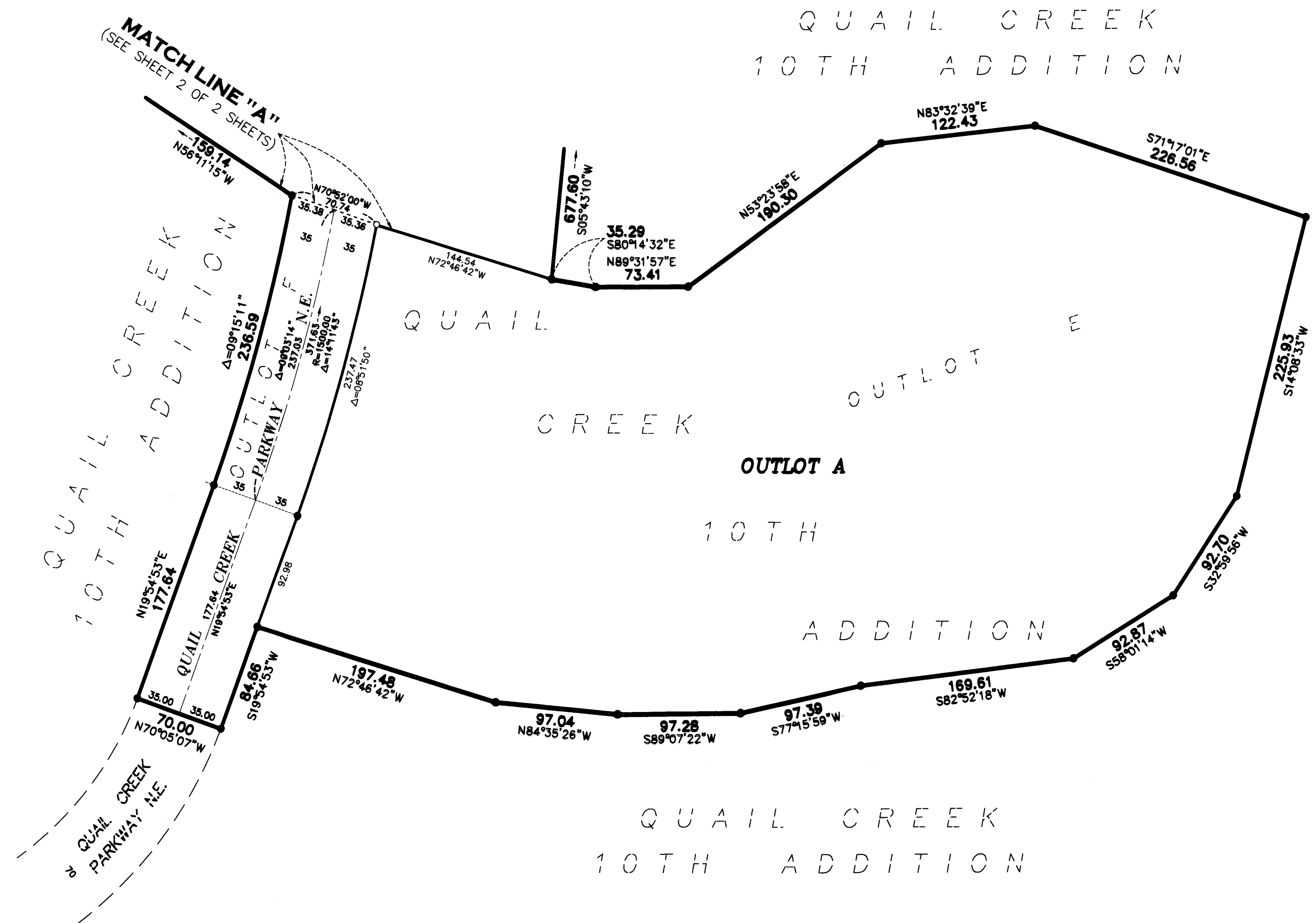
COUNTY RECORDER/REGISTRAR OF TITLES

County of Anoka, State of Minnesota

I hereby certify that this plat of QUAIL CREEK 11TH ADDITION was filed in the office of the County Recorder/Registrar of Titles for public record on this 19 day of October, 2018, at 1:26 o'clock P.M. and was duly recorded as Document Number 2211931.002

By: Jonell M Sawyer
Jonell M Sawyer
County Recorder/Registrar of Titles
By: David E. Johnson, Deputy

\$56.00



For the purposes of this plat, the north line of Outlot C, QUAIL CREEK 10TH ADDITION, is assumed to have a bearing of South 89 degrees 59 minutes 52 seconds East.

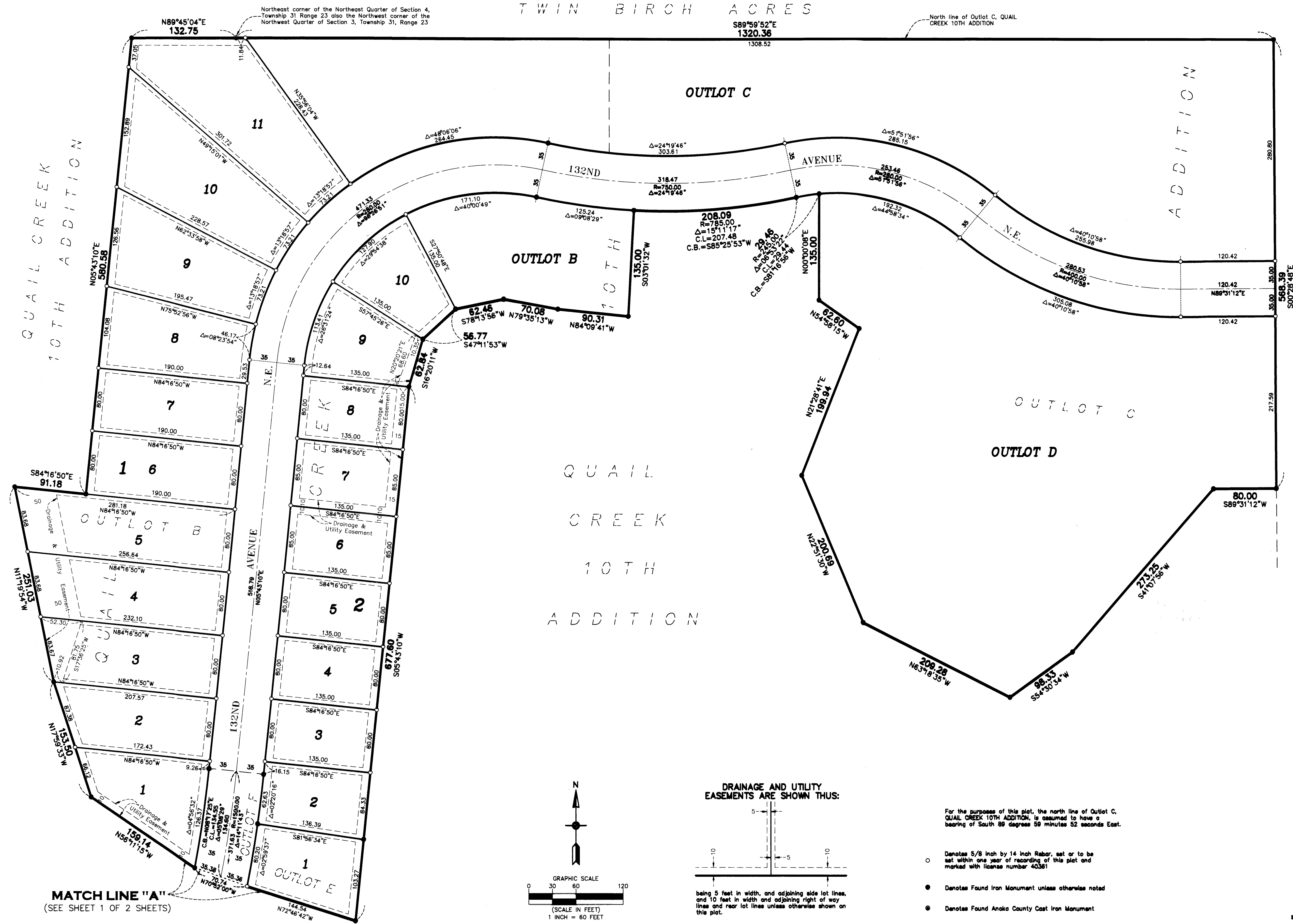
- Denotes 5/8 inch by 14 inch Rebar, set or to be set within one year of recording of this plat and marked with license number 40361
- Denotes Found Iron Monument unless otherwise noted



QUAIL CREEK 11TH ADDITION

CITY OF BLAINE
COUNTY OF ANOKA
SEC. 3 & 4, TWP. 31, RGE. 23

TWIN BIRCH ACRES



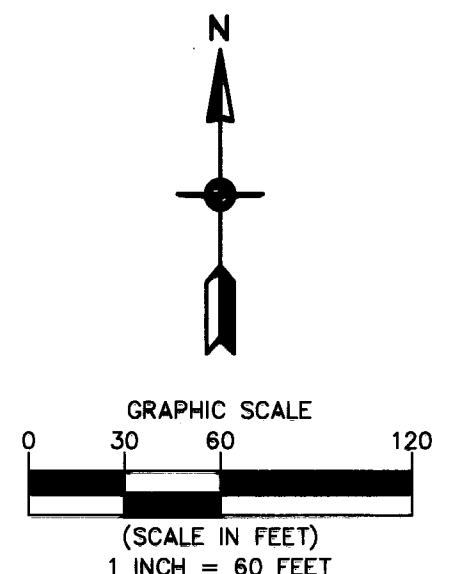
QUAIL CREEK
10TH ADDITION

ADDITION

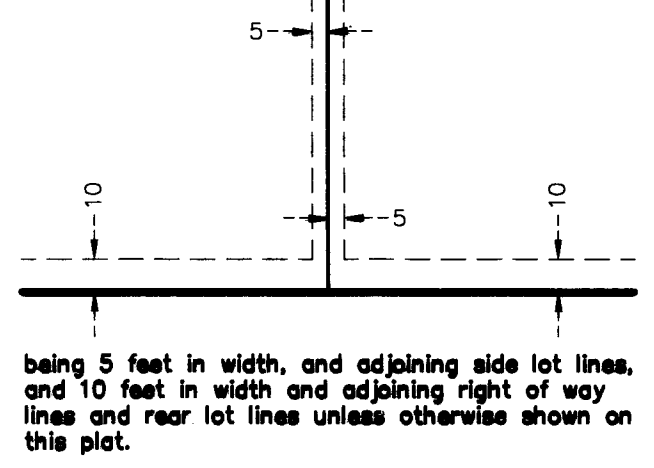
WAGAMON
RANCH
2ND
ADDITION

QUAIL
CREEK
10TH
ADDITION

MATCH LINE "A"
(SEE SHEET 1 OF 2 SHEETS)



DRAINAGE AND UTILITY
EASEMENTS ARE SHOWN THUS:



For the purposes of this plat, the north line of Outlot C, QUAIL CREEK 10TH ADDITION, is assumed to have a bearing of South 89 degrees 59 minutes 52 seconds East.

- Denotes 5/8 inch by 14 inch Rebar, set or to be set within one year of recording of this plat and marked with license number 40361
- Denotes Found Iron Monument unless otherwise noted
- Denotes Found Anoka County Cast Iron Monument

**Carlson
McCain**
ENVIRONMENTAL • ENGINEERING • SURVEYING