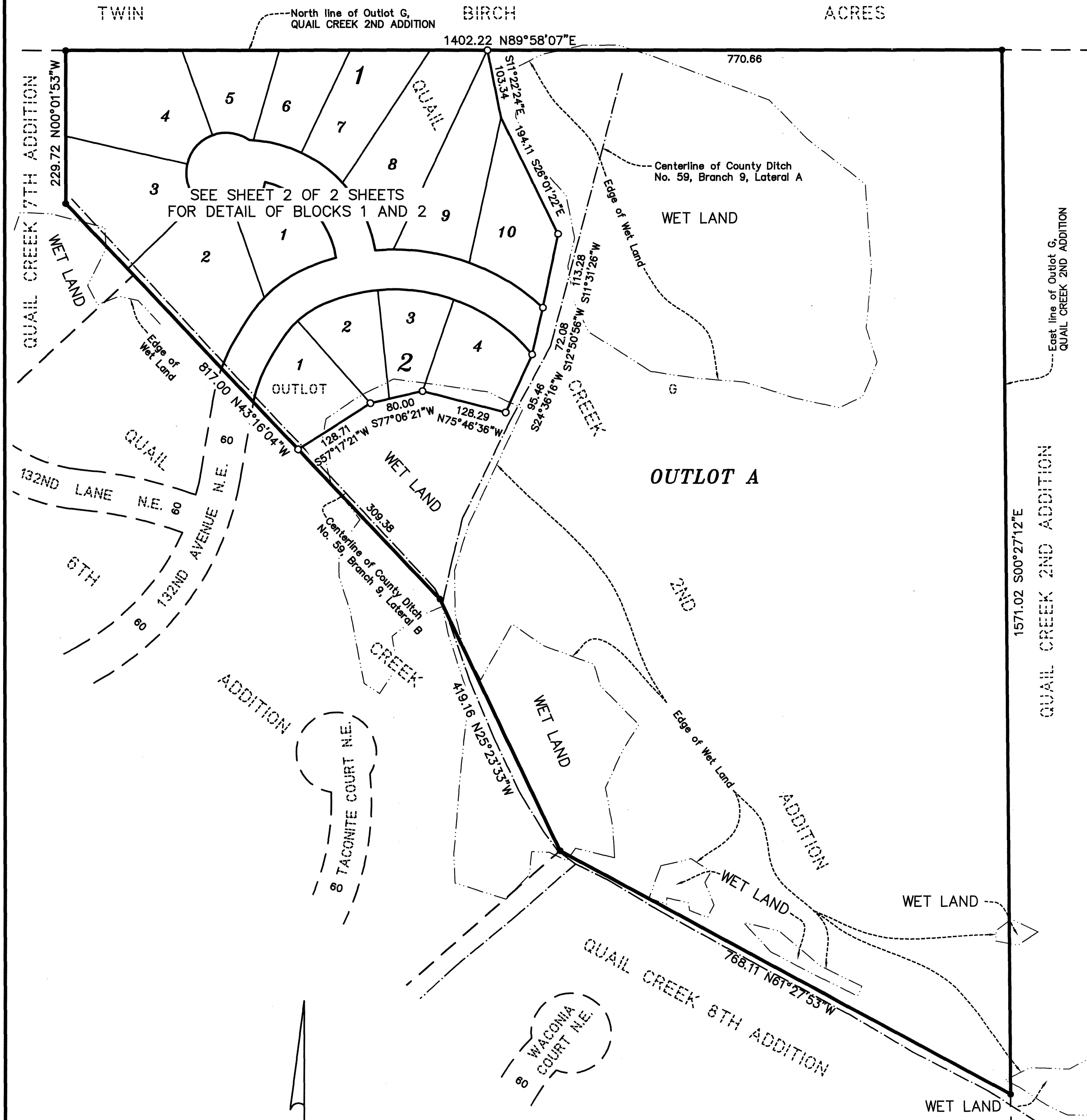


QUAIL CREEK 9TH ADDITION

BK 76 Abst Pg 44

City of Blaine
County of Anoka
Sec. 4, T. 31, R. 23



KNOW ALL PERSONS BY THESE PRESENTS: That PSG Bridger LLC, a Wyoming limited liability company, owner of the following described property:

Outlot G, QUAIL CREEK 2ND ADDITION.

Has caused the same to be surveyed and platted as QUAIL CREEK 9TH ADDITION and does hereby dedicate to the public for public use the public ways and the drainage and utility easements as created by this plat.

In witness whereof said PSG Bridger LLC, a Wyoming limited liability company, has caused these presents to be signed by its proper officer this 12th day of July, 2013.

PSG BRIDGER LLC

By: [Signature]
Paul S. Gagnon, Chief Manager

STATE OF MINNESOTA
COUNTY OF Dakota

This instrument was acknowledged before me this 12 day of July, 2013, by Paul S. Gagnon, as Chief Manager of PSG Bridger LLC, a Wyoming limited liability company.

[Signature]
Ashley M. Hedlund
Notary Public, Minnesota
My Commission Expires 1-31-2017

I Jeffrey D. Lindgren do hereby certify that this plat was prepared by me or under my direct supervision; that I am a duly Licensed Land Surveyor in the State of Minnesota; that this plat is a correct representation of the boundary survey; that all mathematical data and labels are correctly designated on this plat; that all monuments depicted on this plat have been, or will be correctly set within one year; that all water boundaries and wet lands, as defined in Minnesota Statutes, Section 505.01, Subd. 3, as of the date of this certificate are shown and labeled on this plat; and all public ways are shown and labeled on this plat.

Dated this 10 day of July, 2013.

[Signature]
Jeffrey D. Lindgren, Licensed Land Surveyor
Minnesota License No. 14376

STATE OF MINNESOTA
COUNTY OF DAKOTA

This instrument was acknowledged before me this 10 day of July, 2013 by Jeffrey D. Lindgren.

[Signature]
Ashley M. Hedlund
Notary Public, Minnesota
My Commission Expires 1-31-2017

CITY COUNCIL, CITY OF BLAINE, MINNESOTA

This plat of QUAIL CREEK 9TH ADDITION was approved and accepted by the City Council of the City of Blaine, Minnesota at a regular meeting thereof held this 6th day of June, 2013, and said plat is in compliance with the provisions of Minnesota Statutes, Section 505.03, Subd. 2.

CITY COUNCIL, CITY OF BLAINE, MINNESOTA

By: [Signature], Mayor

By: [Signature], Clerk

ANOKA COUNTY SURVEYOR

I hereby certify that in accordance with Minnesota Statutes, Section 505.021, Subd. 11, this plat has been reviewed and approved this 1st day of November, 2013.

By: Larry D. Hoium by Clark F. Bieten, Deputy 2072184.001
Larry D. Hoium
Anoka County Surveyor

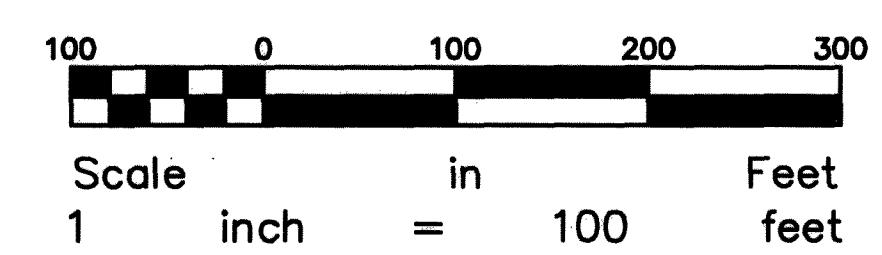
Office of RECORDER/REGISTRAR
OF TITLES
STATE OF MINNESOTA COUNTY OF ANOKA
I hereby certify that the within instrument was filed in
this office for record on the 1st day of
Nov 2013 at 1 o'clock P.M.
and was duly recorded in book 76 page
44
[Signature]
Recorder/Registrar of Titles

I HEREBY CERTIFY THAT THE CURRENT AND
DELINQUENT TAXES ON THE LANDS DESCRIBED
WITHIN ARE PAID AND THE TRANSFER IS
ENTERED Nov 1 2013
[Signature]
PROPERTY TAX ADMINISTRATOR
BY: [Signature]
DEPUTY

○ Denotes 1/2 inch by 14 inch iron pipe monument set and marked by License No. 14376

● Denotes 1/2 inch iron pipe monument found.

For the purposes of this plat, the North line of Outlot G, QUAIL CREEK 2ND ADDITION is assumed to bear N 89°58'07" E.



\$56.00

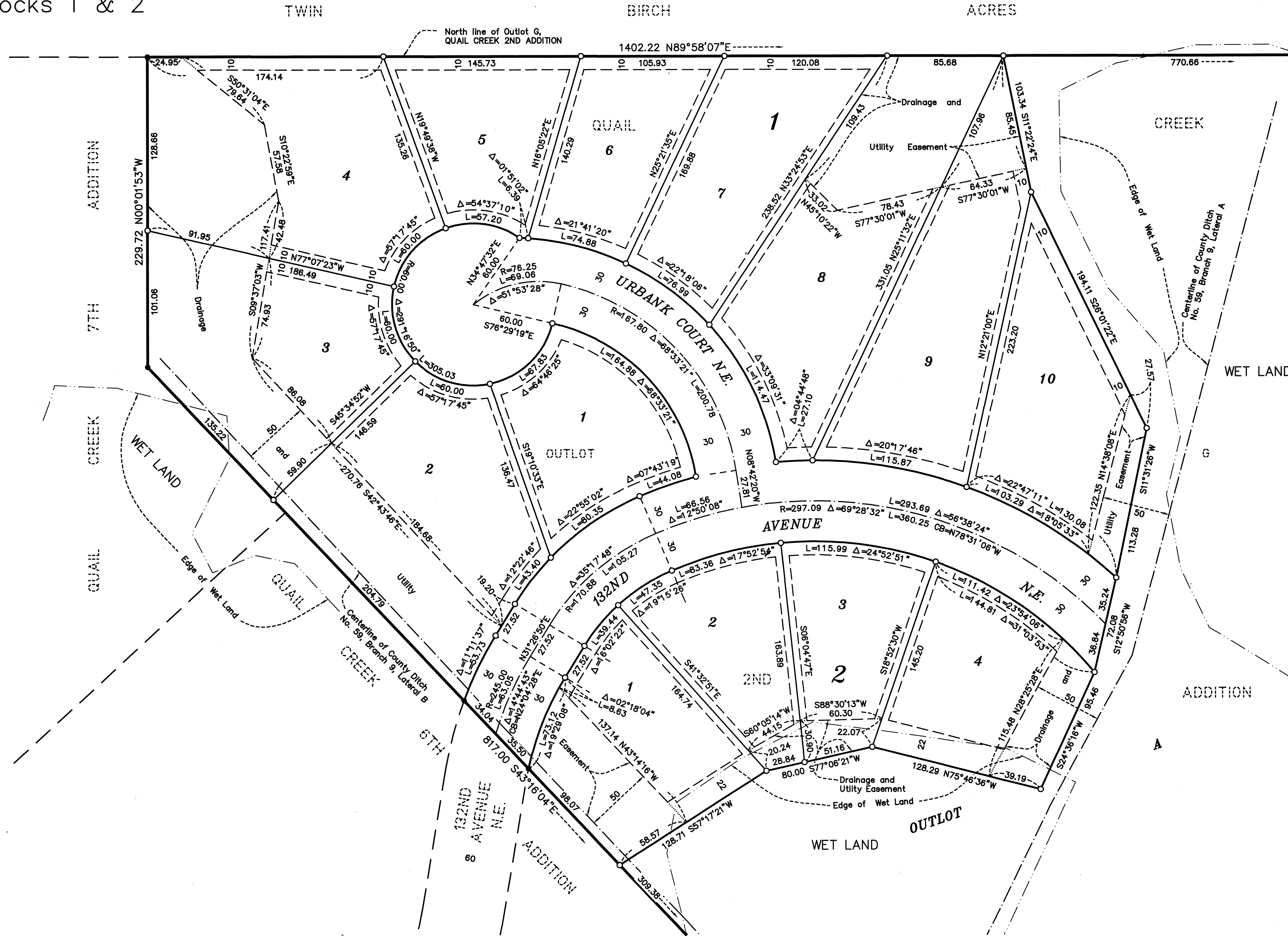
HEDLUND
PLANNING ENGINEERING SURVEYING

QUAIL CREEK 9TH ADDITION

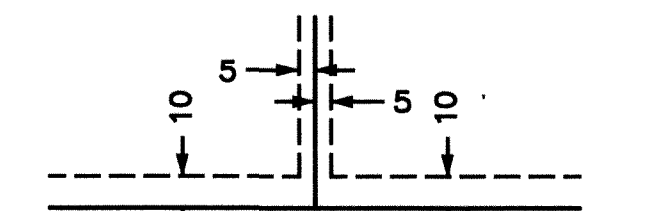
BK 76 Abst Pg 44

City of Blaine
County of Anoka
Sec. 4, T. 31, R. 23

DETAIL of
Blocks 1 & 2



Drainage and Utility Easements are shown thus:

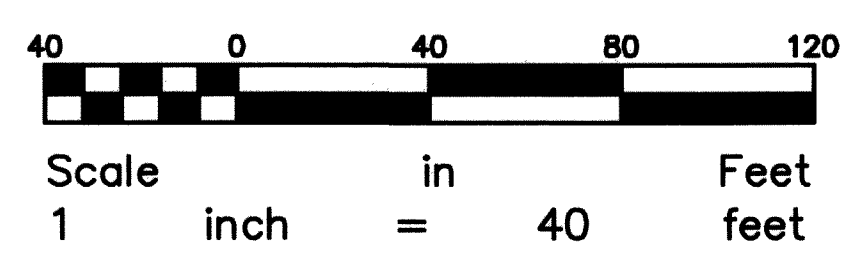


Being 5 feet in width and adjoining lot lines, and 10 feet in width and adjoining street lines unless otherwise shown on this plat.

○ Denotes 1/2 inch by 14 inch iron pipe monument set and marked by License No. 14376

● Denotes 1/2 inch iron pipe monument found.

For the purposes of this plat, the North line of Outlot G, QUAIL CREEK 2ND ADDITION is assumed to bear N 89°58'07" E.



HEDLUND
PLANNING ENGINEERING SURVEYING