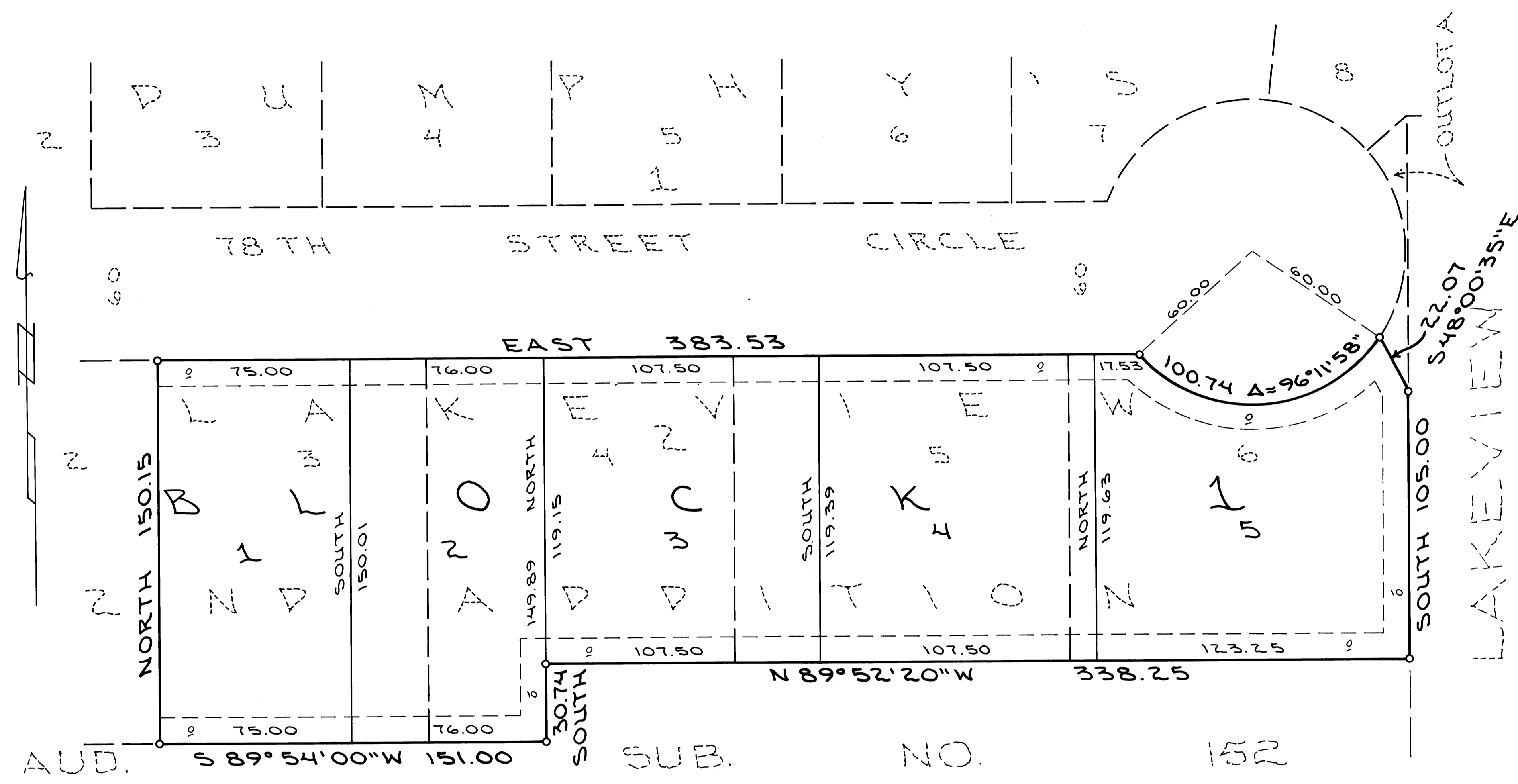


# RAMSEN ADDITION

CITY OF SPRING LAKE PARK  
ANOKA COUNTY, MINNESOTA



KNOW ALL PERSONS BY THESE PRESENTS: That Ransen, Inc., a Minnesota Corporation, owners and proprietors of the following property, situated in the County of Anoka, State of Minnesota, to wit:

Lots 3, 4, 5, and 6, Block 2, DUMPHY'S LAKEVIEW 2ND ADDITION, Anoka County, Minnesota.

Have caused the same to be surveyed and platted as RAMSEN ADDITION, and do hereby donate and dedicate to the public, for public use forever the drainage and utility easements, as shown on the plat.

In witness whereof said Ransen, Inc., a Minnesota corporation, has caused these presents to be signed by its proper officers and its corporate seal affixed this 27 day of July, 1988.

RAMSEN, INC.  
Curtis D. Swanson      John W. Ramberg  
 Curtis D. Swanson, its President      John W. Ramberg, its Vice President

STATE OF MINNESOTA )  
 COUNTY OF Ramsey )      The foregoing instrument was acknowledged before me this 27th day of July, 1988, by Curtis D. Swanson the President, and by John W. Ramberg the Vice President of Ransen, Inc., a Minnesota corporation, on behalf of the Corporation.

Craig D. Swanson  
 Notary Public      Ramsey      Co., Mn.  
 My Commission Expires FEB 16, 1993

I, James L. Kurth, do hereby certify that I have surveyed and platted the property described on this plat as RAMSEN ADDITION, that this plat is a correct representation of said survey; that all distances are correctly shown in feet and hundredths of a foot; that all monuments for the guidance of future surveys have been correctly placed in the ground as shown on the plat; that all outside boundary lines are correctly shown on the plat; and that there are no wet lands or public highways to be designated other than as shown.

James L. Kurth  
 James L. Kurth, Land Surveyor  
 Minnesota Registration No. 5332

STATE OF MINNESOTA )  
 COUNTY OF ANOKA )      The above certificate subscribed and sworn to before me this 25 day of June, 1988, by James L. Kurth, Land Surveyor.

Karen J. Kurth  
 Notary Public, Anoka Co., Mn.  
 My Commission Expires FEB 13, 1991

Karen J. Kurth  
 Notary Public, Anoka Co., Mn.  
 My Commission Expires FEB 13, 1991

I HEREBY CERTIFY THAT THE TAXES PAYABLE IN THE YEAR 1988 ON THE LANDS DESCRIBED WITHIN ARE PAID  
Donald C. Bailey  
 Anoka County Treasurer  
J. Henry Deputy

This plat of RAMSEN ADDITION was approved and accepted by the City Council of the City of Spring Lake Park, Minnesota, at a regular meeting thereof held this 15 day of AUGUST, 1988. If applicable, the written comments and recommendations of the Commissioner of Transportation and the County Highway Engineer have been received by the City or the prescribed 30 day period has elapsed without receipt of such comments and recommendations, as provided by Minnesota Statutes, Section 505.03, Subdivision 2.

Don Masterson      Ronald B. Buehler  
 Mayor      Clerk

Checked and approved this 8th day of Sept., 1988.  
Wm. O. Ouellet  
 Anoka County Surveyor

822336  
 OFFICE OF COUNTY RECORDER  
 STATE OF MINNESOTA, COUNTY OF ANOKA

I hereby certify that the within instrument was filed in this office for record on the See 8 AD, 1988 at 3 o'clock P.M., and was duly recorded in book 39 of Plats, page 39.

Red J. Ouellet  
 County Recorder  
 By Sarah Kayge

"NO DELINQUENT TAXES AND TRANSFER ENTLRED"  
September 8th 88  
Charles R. Lefebvre  
 Auditor, Anoka County  
Deputy