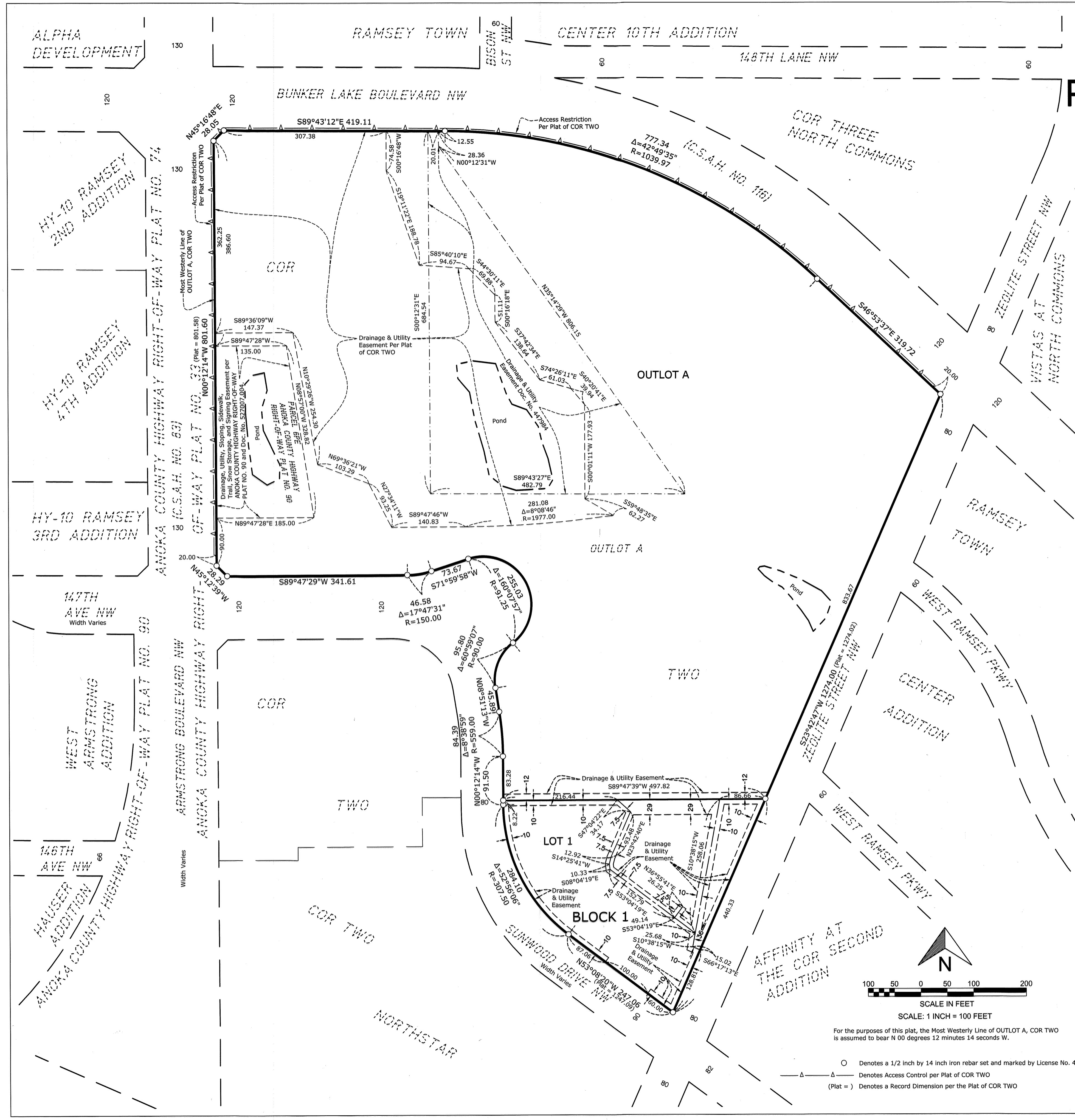


# RAMSEY PROPERTIES ADDITION



**KNOW ALL PERSONS BY THESE PRESENTS:** That the City of Ramsey, a Minnesota municipal corporation, owner of the following described property:  
 OUTLOT A, COR TWO, Anoka County, Minnesota.

Has caused the same to be surveyed and platted as RAMSEY PROPERTIES ADDITION and does hereby dedicate to the public for public use the drainage and utility easements as created by this plat.

In witness whereof said City of Ramsey, a Minnesota municipal corporation, has caused these presents to be signed by its proper officer  
 this 17<sup>th</sup> day of August, 2023.

City of Ramsey  
 By: Mark E. Kuzma Its Mayor  
 By: Brian Hagen Its City Administrator

STATE OF Minnesota, COUNTY OF Anoka  
 This instrument was acknowledged before me this 17<sup>th</sup> day of August, 2023 by Mark E. Kuzma,  
 Mayor of City of Ramsey, a Minnesota municipal corporation, on behalf of the corporation.

By: Sean M. Sullivan Notary Public, Signature  
Sean M. Sullivan Notary Public, Printed Name My Commission Expires: January 31, 2025

Notary Public Anoka County, Minnesota

STATE OF Minnesota, COUNTY OF Anoka  
 This instrument was acknowledged before me this 17<sup>th</sup> day of August, 2023 by Brian Hagen, City Administrator of City of  
 Ramsey, a Minnesota municipal corporation, on behalf of the corporation.

By: Sean M. Sullivan Notary Public, Signature  
Sean M. Sullivan Notary Public, Printed Name My Commission Expires: January 31, 2025

Notary Public Anoka County, Minnesota

**SURVEYORS CERTIFICATE**  
 I Rory L. Synsteden do hereby certify that this plat was prepared by me or under my direct supervision; that I am a duly Licensed Land Surveyor in the State of  
 Minnesota; that this plat is a correct representation of the boundary survey; that all mathematical data and labels are correctly designated on this plat; that all  
 monuments depicted on this plat have been, or will be correctly set within one year; that all water boundaries and wet lands, as defined in Minnesota Statutes,  
 Section 505.01, Subd. 23, as of the date of this certificate are shown and labeled on this plat; and all public ways are shown and labeled on this plat.

Dated this 17<sup>th</sup> day of August, 2023  
Rory L. Synsteden  
 Rory L. Synsteden, Licensed Land Surveyor  
 Minnesota License No. 44565

STATE OF MINNESOTA, COUNTY OF RAMSEY  
 This instrument was acknowledged before me this 17<sup>th</sup> day of August, 2023 by Rory L. Synsteden.

By: Cody E. Johnson Notary Public, Signature  
Cody E. Johnson Notary Public, Printed Name My Commission Expires: January 31, 2027

Notary Public RAMSEY County, MINNESOTA

**CITY COUNCIL**  
 City Council, City of Ramsey, Minnesota  
 This plat of RAMSEY PROPERTIES ADDITION was approved and accepted by the City Council of the City of Ramsey, Minnesota at a regular meeting thereof held  
 this 11<sup>th</sup> day of July, 2023, and said plat is in compliance with the provisions of Minnesota Statutes, Section 505.03, Subd. 2.

City Council, City of Ramsey, Minnesota  
 By: Mark E. Kuzma Mayor  
K.L. Clerk

**COUNTY SURVEYOR**  
 I hereby certify that in accordance with Minnesota Statutes, Section 505.021, Subd. 11, this plat has been reviewed and approved  
 this 29<sup>th</sup> day of August, 2023.

By: David M. Ziegler  
 David M. Ziegler  
 Anoka County Surveyor

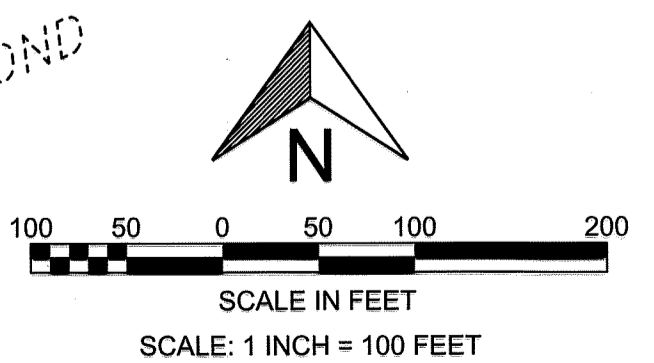
**COUNTY AUDITOR/TREASURER**  
 Pursuant to Minnesota Statutes, Section 505.021, Subd. 9, taxes payable in the year 2023 on the land hereinbefore described have been paid.  
 Also, pursuant to Minnesota Statutes, Section 272.12, there are no delinquent taxes and transfer entered this 15<sup>th</sup> day of September, 2023.

By: Pamela J LeBlanc Property Tax Administrator  
Marcia Earnest Deputy

**COUNTY RECORDER/REGISTRAR OF TITLES**  
 County of Anoka, State of Minnesota

I hereby certify that this plat of RAMSEY PROPERTIES ADDITION was filed in the Office of the County Recorder/Registrar of Titles for public record on  
 this 15<sup>th</sup> day of September, 2023, at 3:40 o'clock P.M. and was duly recorded as

Document Number 612539.002  
 By: Pamela J LeBlanc County Recorder/Registrar of Titles  
Marcia Earnest Deputy



For the purposes of this plat, the Most Westerly Line of OUTLOT A, COR TWO is assumed to bear N 00 degrees 12 minutes 14 seconds W.

- Denotes a 1/2 inch by 14 inch iron rebar set and marked by License No. 44565.
- △ Denotes Access Control per Plat of COR TWO
- (Plat = ) Denotes a Record Dimension per the Plat of COR TWO