

RAMSEY TOWN CENTER 12TH ADDITION

KNOW ALL PERSONS BY THESE PRESENTS: That PSD, LLC, a Minnesota limited liability company, owner of the following described property:

OUTLOT AA, RAMSEY TOWN CENTER ADDITION, according to the recorded plat thereof, Anoka County, Minnesota; Except that portion of said OUTLOT AA that lies within RAMSEY TOWN CENTER FIFTH ADDITION.

Has caused the same to be surveyed and platted as RAMSEY TOWN CENTER 12TH ADDITION and does hereby dedicate to the public for public use the drainage and utility easements as created by this plat.

In witness whereof said PSD, LLC, a Minnesota limited liability company, has caused these presents to be signed by its proper officer this

29th day of November, 2010.

SIGNED: PSD, LLC

By Pamela S. Deal, Chief Manager
Pamela S. Deal

STATE OF MINNESOTA
COUNTY OF ANOKA

This instrument was acknowledged before me this 29th day of NOVEMBER, 2010, by Pamela S. Deal, Chief Manager of PSD, LLC, a Minnesota limited liability company.

MATHIAS A. KUYER

Ms. Kuy

Notary Public, SHERBURNE County, Minnesota

My Commission Expires JAN 31, 2015

I Craig E. Johnson do hereby certify that this plat was prepared by me or under my direct supervision; that I am a duly Licensed Land Surveyor in the State of Minnesota; that this plat is a correct representation of the boundary survey; that all mathematical data and labels are correctly designated on this plat; that all monuments depicted on this plat have been, or will be correctly set within one year; that all water boundaries and wet lands, as defined in Minnesota Statutes, Section 505.01, Subd. 3, as of the date of this certificate are shown and labeled on this plat; and all public ways are shown and labeled on this plat.

Dated this 29th day of NOVEMBER, 2010.

Craig E. Johnson
Craig E. Johnson, Licensed Land Surveyor
Minnesota License No. 44530

STATE OF MINNESOTA
COUNTY OF ANOKA

This instrument was acknowledged before me this 29th day of November, 2010 by Craig E. Johnson.

Jodi E. Doren
Jodi E. Doren

Notary Public, Sherburne County, Minnesota

My Commission Expires JAN 31, 2011

CITY COUNCIL, CITY OF RAMSEY, MINNESOTA

This plat of RAMSEY TOWN CENTER 12TH ADDITION was approved and accepted by the City Council of the City of Ramsey, Minnesota at a regular meeting thereof held this 26th day of OCTOBER, 2010, and said plat is in compliance with the provisions of Minnesota Statutes, Section 505.03, Subd. 2.

City Council, City of Ramsey, Minnesota

By W. H. H. Mayor

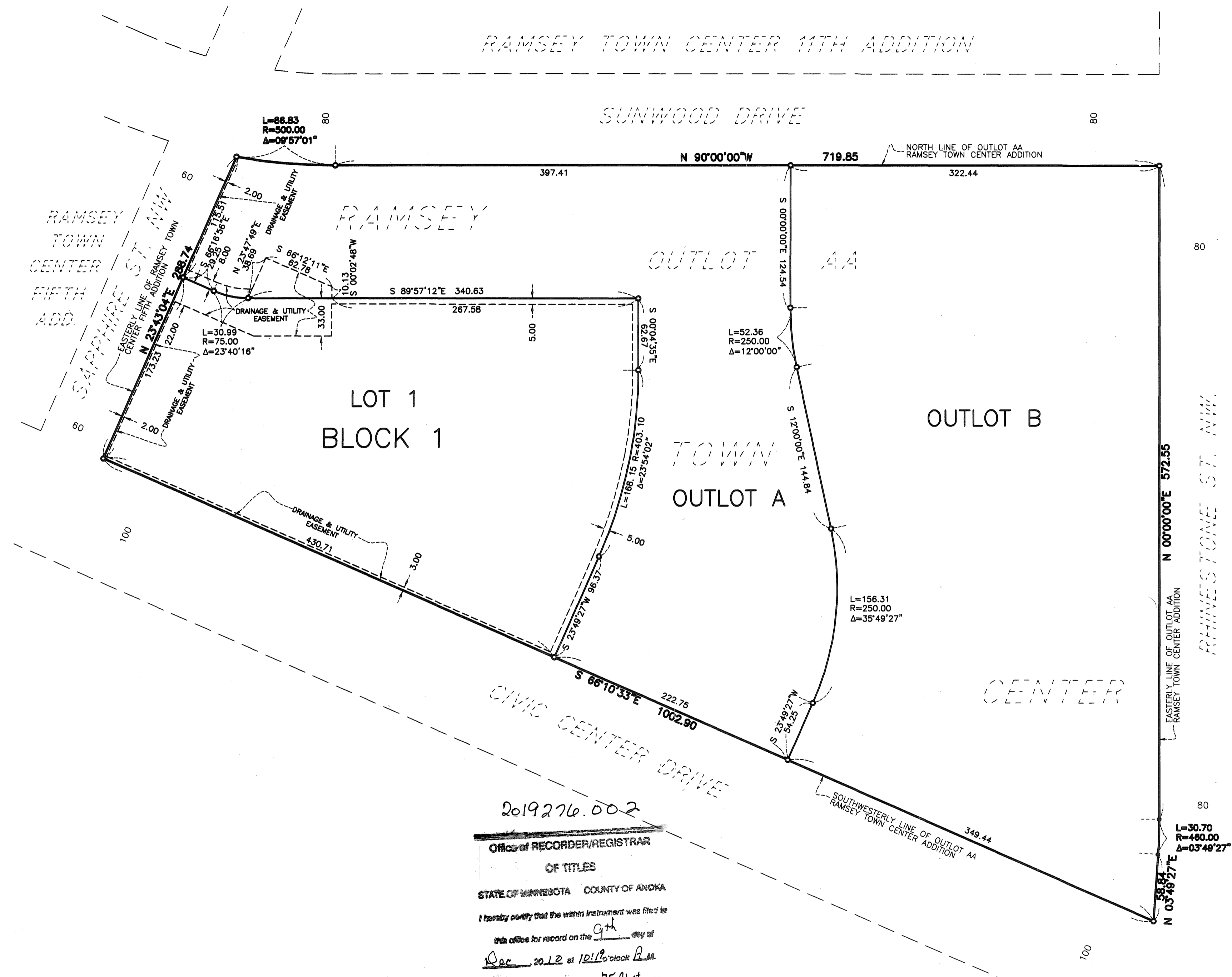
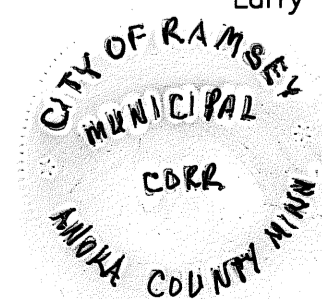
By John M. Shekling City Clerk

COUNTY SURVEYOR

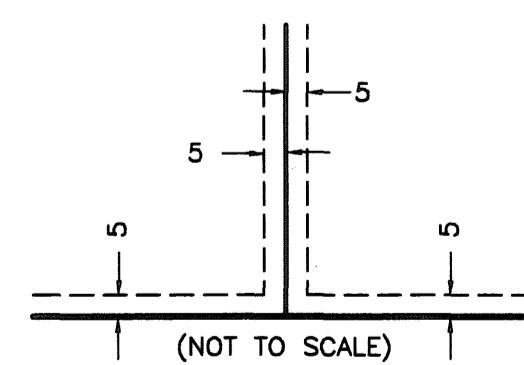
I hereby certify that in accordance with Minnesota Statutes, Section 505.021, Subd. 11, this plat has been reviewed and approved this

9th day of DECEMBER, 2010.

Larry D. Holm
Larry D. Holm, Anoka County Surveyor



DRAINAGE & UTILITY EASEMENTS ARE SHOWN THUS:



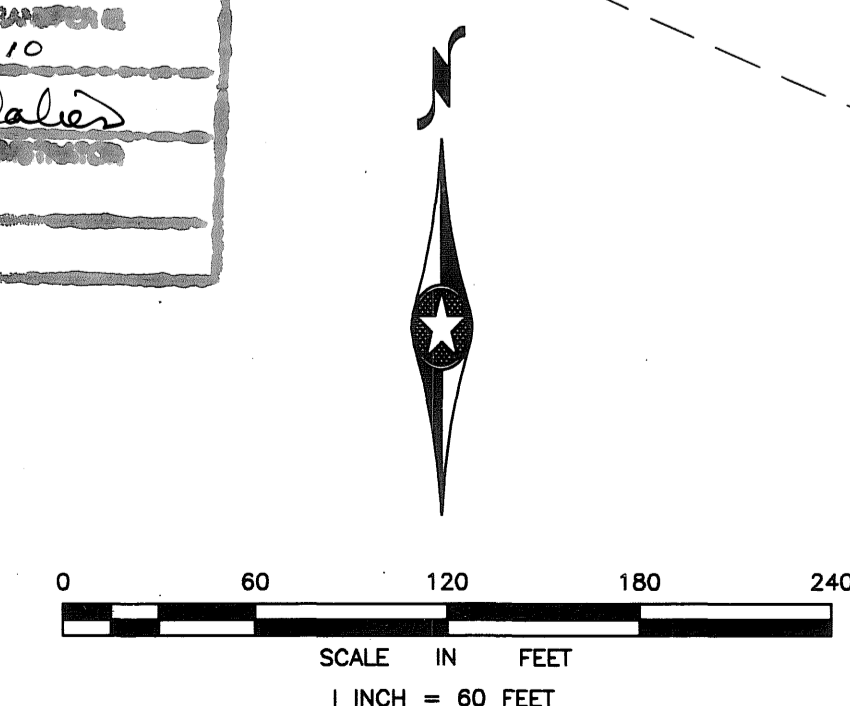
BEING 5 FEET IN WIDTH ADJOINING REAR LOT LINES, AND SIDE LOT LINES, AS SHOWN ON THE PLAT, UNLESS OTHERWISE INDICATED.

2019276.002
Office of RECORDER/REGISTRAR
OF TITLES
STATE OF MINNESOTA COUNTY OF ANOKA
I hereby certify that the within instrument was filed in this office for record on the 9th day of Dec 2012 at 12:16 o'clock P.M.
This was deposited in book 75 Abs. page 38
Larry W. Dales
Recorder/Registrar of Titles
By RCM Deputy

- LEGEND
- 1/2 INCH X 14 INCH IRON PIPE MONUMENT SET MARKED BY REG. NO. 44530
 - MONUMENT FOUND

For the purposes of this plat the North line of Outlot AA, RAMSEY TOWN CENTER ADDITION is assumed to bear N 90°00'00" W.

RAMSEY CERTIFY THAT THE CURRENT AND DELINQUENT TAXES ON THE LOTS DESCRIBED HEREIN ARE PAID AND THE TRANSFER IS DATED 12/9/10
Larry W. Dales
Deputy



\$56.00