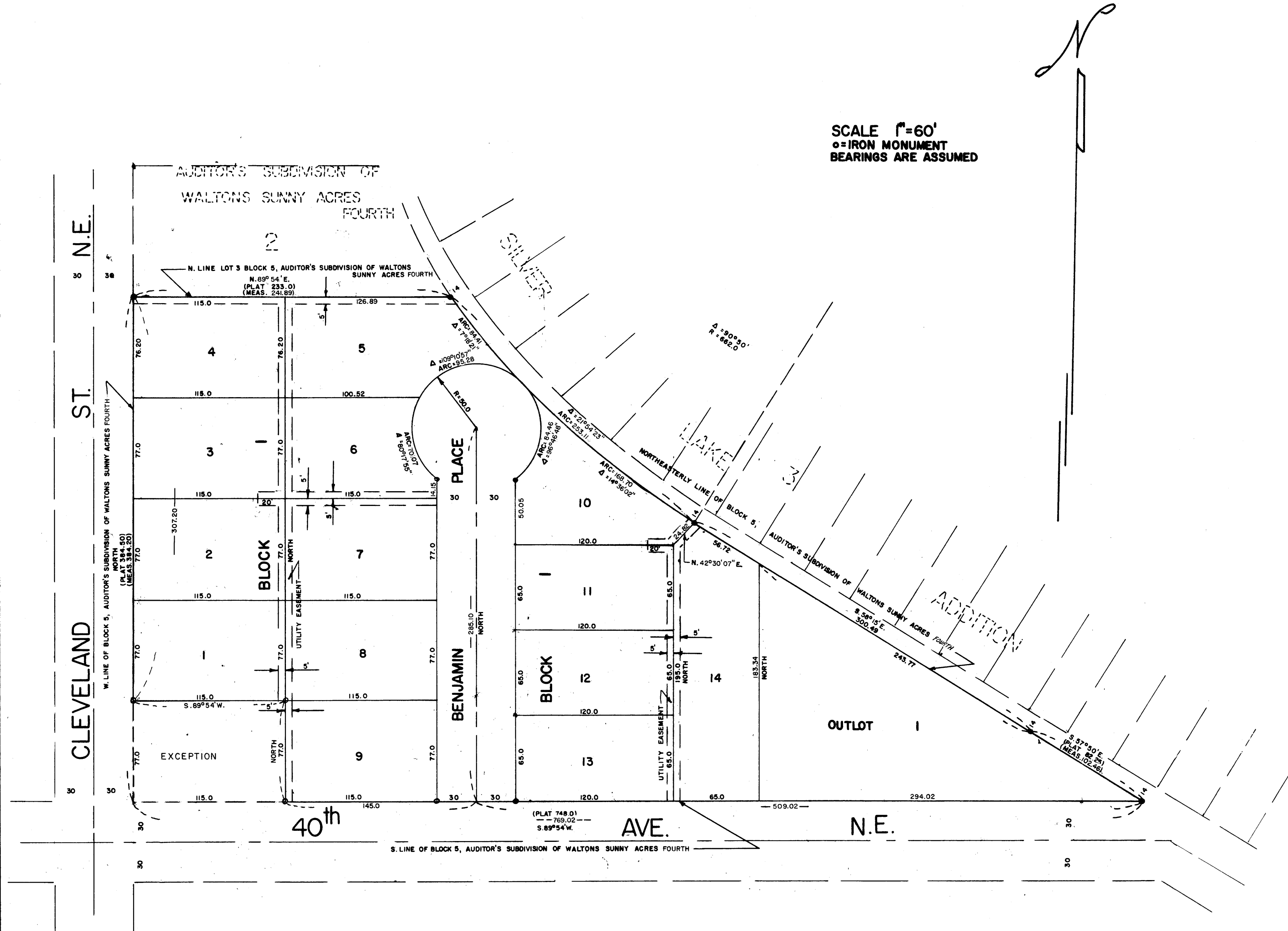


RAND ADDITION

COLUMBIA HEIGHTS



SCALE 1"=60'
●=IRON MONUMENT
BEARINGS ARE ASSUMED

EXCEPT THE SOUTH 77.0 FEET OF THE WEST 115.0 FEET OF SAID LOT 5,

Know all men by these presents: That we, John O. Gilligan and Marjorie A. Gilligan, his wife, and Milton J. Pribula and Beverly A. Pribula, his wife, owners and proprietors of the following described property situate in the County of Anoka, State of Minnesota, to-wit: Lots 3, 4, 5, 6 and 7 Block 5, Auditor's Subdivision of Waltons Sunny Acres Fourth, according to the plat thereof on file and of record in the office of the Register of Deeds, Anoka County, Minnesota. Have caused the same to be surveyed and platted as RAND ADDITION and do hereby donate and dedicate to the public for public use forever the Place as shown on the annexed plat. Also subject to Utility easements as shown on the annexed plat. In witness whereof we have hereunto set our hands and seals

This 15th day of JULY A.D. 1961

In the Presence of Signed

Juan Bastala and Albert V. Rosenbower as to John O. Gilligan
John O. Gilligan

Juan Bastala and Albert V. Rosenbower as to Marjorie A. Gilligan
Marjorie A. Gilligan

Juan Bastala and Albert V. Rosenbower as to Milton J. Pribula
Milton J. Pribula

Juan Bastala and Albert V. Rosenbower as to Beverly A. Pribula
Beverly A. Pribula

State of Minnesota) S.S.
County of Hennepin)

On this 15th day of JULY A.D. 1961, before me, a Notary Public, within and for said County and State, personally appeared John O. Gilligan and Marjorie A. Gilligan, his wife, and Milton J. Pribula and Beverly A. Pribula, his wife, to me known to be the persons in and who executed the foregoing instrument and they affirm and acknowledge that they executed the same as their own free act and deed.

Albert V. Rosenbower
Notary Public, Hennepin County, Minnesota
ALBERT V. ROSENBOWER
Notary Public, Hennepin County, Minn.
My Commission Expires Dec. 9, 1966.

I hereby certify that I have surveyed and platted the land described in the dedication on this plat as RAND ADDITION, that this plat is a correct representation of said survey, that all distances are correctly shown on said plat in figures denoting feet and decimals of a foot, that the monuments for the guidance of future surveys have been correctly placed in the ground as shown on said plat, that the topography of the land is correctly shown on said plat, that the outside boundaries of the land are correctly designated on said plat, that there are no wet lands or public highways to be designated on said plat other than are shown thereon.

F.C. Jackson
F.C. Jackson, Land Surveyor, Minn. Reg. No. 3600

State of Minnesota) S.S.
County of Hennepin)

Above certificate subscribed and sworn to before me, a Notary Public, within and for said County and State, on this 10 day of July A.D. 1961.

Ashley H. Morse
Notary Public, Hennepin County, Minnesota
ASHLEY H. MORSE
Notary Public, Hennepin County, Minn.
My Commission Expires June 24, 1968.

This plat was approved as to form and execution on this 18th day of July A.D. 1961.

Stewart Walker
City Attorney, Columbia Heights, Minnesota

We hereby certify that the City Council of the City of Columbia Heights, Anoka County, Minnesota, duly accepted and approved the annexed plat of RAND ADDITION at a regular meeting thereof held this 10th day of JULY A.D. 1961.

City of Columbia Heights, Anoka County, Minnesota

By Warren Olson its Mayor

By R.C. Johnson its Clerk

Checked and approved this 23rd day of MARCH A.D. 1961.

Robert W. Anderson
County Surveyor, Anoka County, Minnesota

232924

OFFICE OF REGISTER OF DEEDS
STATE OF MINNESOTA, COUNTY OF ANOKA } SS

I hereby certify that the within instrument was filed in this office for record on the 23rd day of March A.D. 1961 at 2:00 o'clock P.M., and was duly recorded in book "Y" of Plats, page 20.

Gertrude Skinner
Register of Deeds
By Margaret Russell Deputy

F.C. JACKSON
LAND SURVEYOR
MINN. REG. NO. 3600

TAXES PAID

This 23rd day of March 1961

Kenneth M. Campbell
Auditor, Anoka County, Minn.
Robert Peterson Deputy

I HEREBY CERTIFY THAT TAXES FOR THE YEAR 1961 ON THE LANDS DESCRIBED WITHIN ARE PAID

Walter D. Bowers
County Treasurer
By L. Jarvis Deputy