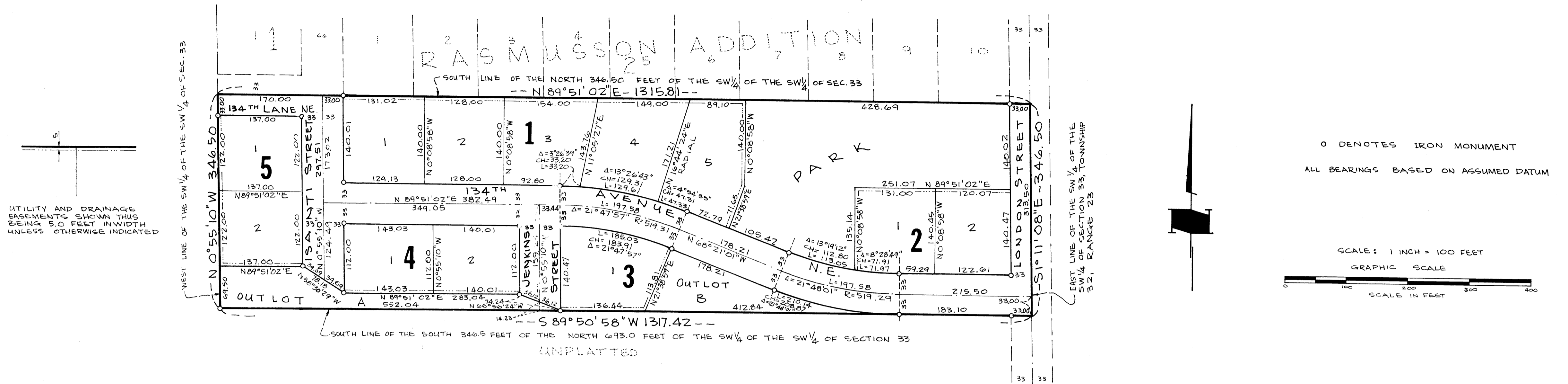


RASMUSSEN 2ND ADDITION



UTILITY AND DRAINAGE EASEMENTS SHOWN THIS BEING 5.0 FEET IN WIDTH UNLESS OTHERWISE INDICATED

0 DENOTES IRON MONUMENT
ALL BEARINGS BASED ON ASSUMED DATUM

SCALE: 1 INCH = 100 FEET
GRAPHIC SCALE
SCALE IN FEET

KNOW ALL MEN BY THESE PRESENTS: That Theodore O. Rasmussen and Delores E. Rasmussen, husband and wife, owners and proprietors of the following described property situated in the State of Minnesota, County of Anoka to wit:

The South 346.5 feet of the North 693.0 feet of the Southwest 1/4 of the Southwest 1/4 of Section 33, Township 32, Range 23, Anoka County, Minnesota as measured along the East and West lines thereof.

Have caused the same to be surveyed and platted as RASMUSSEN 2ND ADDITION, and do hereby donate and dedicate to the public for public use forever the Park, Avenue, Lane, Streets, and the utility and drainage easements as shown on the annexed plat.

In witness whereof said Theodore O. Rasmussen and Delores E. Rasmussen, husband and wife, have hereunto set their hands and seals this 14th day of December, 19 71, A.D.

IN PRESENCE OF
Betty Anderson and Donna J. Adams Theodore O. Rasmussen SIGNED Theodore O. Rasmussen
Donna J. Adams and Betty Anderson Delores E. Rasmussen Delores E. Rasmussen

State of Minnesota
County of Anoka

On this 14th day of December, 19 71, A.D., before me a notary public within and for said County and State, personally appeared Theodore O. Rasmussen and Delores E. Rasmussen, husband and wife, to me personally known to be the persons described in and who executed the foregoing instrument and acknowledged that they executed the same as their own free act and deed.

Hathina Heinman
Notary Public, Anoka County, Minnesota
My commission expires April 4, 1978

I hereby certify that I have surveyed the property described on this plat as RASMUSSEN 2ND ADDITION; that this plat is a correct representation of said survey; that all distances are correctly shown in feet and decimals of a foot; that all monuments have been correctly placed in the ground as shown; that the outside boundary lines are correctly designated and that there are no wet lands to be designated on said plat.

Keith P. Caswell
Registered Land Surveyor
Minnesota Registration No. 3959

State of Minnesota
County of Hennepin

The Surveyor's Certificate was subscribed and sworn to before me, a notary public, this 15 day of December, 19 70, A.D.

Sharon H. Dalling
Notary Public, Hennepin County, Minnesota
My commission expires Jan 25, 1972

This plat was approved this 14th day of December, 19 71, A.D.

by E. J. Lundheim
County Engineer, Anoka County, Minnesota

This plat was approved as to form and execution this 20th day of December, 19 71, A.D.

by Robert Johnson
Assistant County Attorney, Anoka County, Minnesota

This plat was approved and accepted by the Honorable Board of County Commissioners of the County of Anoka, State of Minnesota, at a regular meeting thereof held this 16 day of Dec, 19 71, A.D.

Olivia Reinhold Chairman of County Board of Commissioners
Charles R. Lefebvre County Auditor, Anoka County, Minnesota

We, the Chairman and Secretary of the Planning and Zoning Commission of the Township of Ham Lake, Anoka County Minnesota, do hereby accept and approve this plat this 16 day of FEBRUARY, 19 71, A.D.

PLANNING AND ZONING COMMISSION, TOWNSHIP OF HAM LAKE
by Edward R. Heim Chairman
by Amundannerud Secretary

We, the Chairman and Secretary of the Township Board of the Township of Ham Lake, Anoka County, Minnesota, do hereby certify that on this 16 day of February, 19 71, A.D., said Township Board duly approved the plat of RASMUSSEN 2ND ADDITION and authorized the certification of such action of the Board by its Chairman and Secretary.

TOWNSHIP BOARD, TOWNSHIP OF HAM LAKE
by Wilson J. Matheson Chairman
by Donald R. Roman Secretary

The boundaries of this plat and the boundaries of the blocks therein have been mathematically checked and approved. No determination has been made to ascertain that the legal description agrees with said plat. Dated this 14th day of December, 19 71, A.D.

by Roland W. Anderson
Roland W. Anderson
County Surveyor, Anoka County, Minnesota

365026

OFFICE OF REGISTER OF DEEDS
STATE OF MINNESOTA, COUNTY OF ANOKA }
I hereby certify that this within instrument was filed in this office for record on the 14th day of December, 1971, A.D., 1971, at 3 o'clock P.M., and was duly recorded in book 20 of Plats, page 14.
Ted J. Gustaf
By Margaret Russell Deputy

"NO DELINQUENT TAXES"
March 20, 1972
Charles R. Lefebvre
Olivia Reinhold