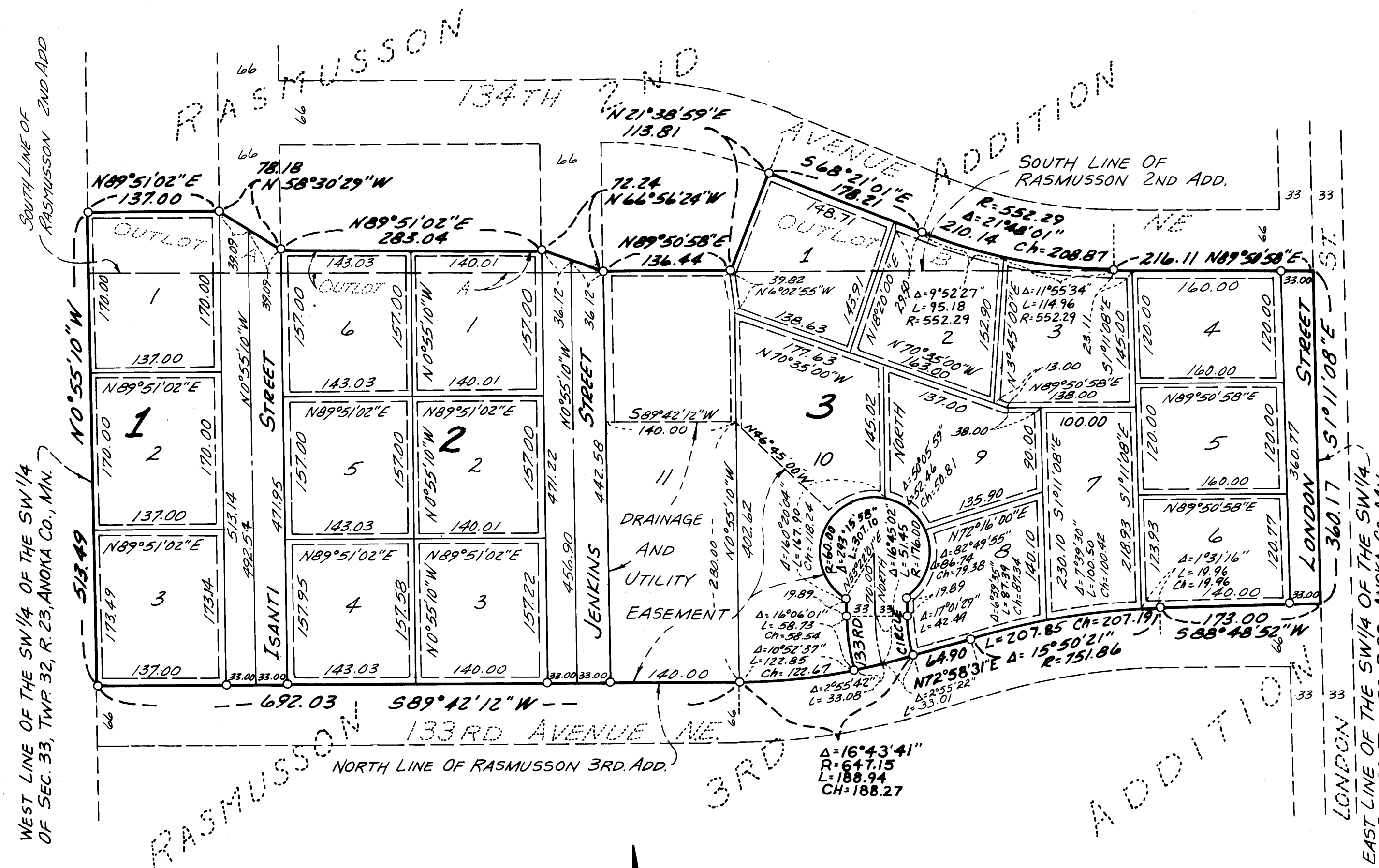


RASMUSSEN 4TH ADDITION

CITY OF HAM LAKE
CONSULTING ENGINEERS DIVERSIFIED INC.

ANOKA COUNTY, MINNESOTA
ENGINEERS AND LAND SURVEYORS



KNOW ALL MEN BY THESE PRESENTS: That Theodore O. Rasmussen and Delores E. Rasmussen, husband and wife, owners and proprietors of the following described property situated in the County of Anoka, State of Minnesota to wit:

That part of the Southwest Quarter of the Southwest Quarter of Section 33, Township 32, Range 23, Anoka County, Minnesota, which lies South of RASMUSSEN 2ND ADDITION, according to the plat on file and of record in the office of the County Recorder, Anoka County, Minnesota, and which lies North of RASMUSSEN 3RD ADDITION, according to the plat on file and of record in the office of the County Recorder, Anoka County, Minnesota.

Also OUTLOT A and OUTLOT B of said RASMUSSEN 2ND ADDITION.

Have caused the same to be surveyed and platted as RASMUSSEN 4TH ADDITION and do hereby donate and dedicate to the public for public use forever the circle, streets and drainage and utility easements as shown on the plat. In witness whereof said Theodore O. Rasmussen and Delores E. Rasmussen, husband and wife, have hereunto set their hands this 16th day of November, 1978.

SIGNED:

Theodore O. Rasmussen
Theodore O. Rasmussen

Delores E. Rasmussen
Delores E. Rasmussen

STATE OF MINNESOTA
COUNTY OF ANOKA HENNEPIN

The foregoing instrument was acknowledged before me this 16th day of November, 1978, by Theodore O. Rasmussen and Delores E. Rasmussen, husband and wife.

David S. Anderson
Notary Public, Hennepin County, Minnesota
My Commission Expires February 6, 1984

I hereby certify that I surveyed the property described on this plat as RASMUSSEN 4TH ADDITION, that this plat is a correct representation of the survey, that all distances are shown in feet and hundredths of a foot, that all monuments have been correctly placed in the ground as shown, that the outside boundary lines are correctly designated on the plat; and that there are no wetlands to be designated on this plat, other than shown thereon.

Lynn P. Caswell
Lynn P. Caswell, Land Surveyor
Minnesota Registration No. 13057

STATE OF MINNESOTA
COUNTY OF HENNEPIN

The foregoing instrument was acknowledged before me this 16th day of November, 1978, by Lynn P. Caswell, Land Surveyor.

David S. Anderson
Notary Public, Hennepin County, Minnesota
My Commission Expires February 6, 1984

CITY COUNCIL
HAM LAKE, MINNESOTA

This plat of RASMUSSEN 4TH ADDITION was approved and accepted by the City Council of the City of Ham Lake, Minnesota, at a regular meeting thereof held this 20 day of Nov, 1978.

CITY COUNCIL OF HAM LAKE, MINNESOTA
Olson J. Hutz Mayor
Ross D. Rowland Clerk

ANOKA COUNTY SURVEYOR

This plat was checked and approved on this 5th day of January, 1979.

Robert W. Anderson
County Surveyor
Anoka County, Minnesota 516764

"NO DELINQUENT TAXES
AND TRANSFER ENTERED"

Jan 5th 1979
Charles R. Spleen
Auditor, Anoka County
BY J.R. Kaminski
Deputy

OFFICE OF COUNTY RECORDER
STATE OF MINNESOTA, COUNTY OF ANOKA
I hereby certify that the within instrument was filed in this office for record on the JAN 5 1979 A.D., 1979 at 11:55 o'clock A.M., and was duly recorded in book 29 of PLATS page 31

David J. Pauls
County Recorder
By J. A. Hallness
Deputy