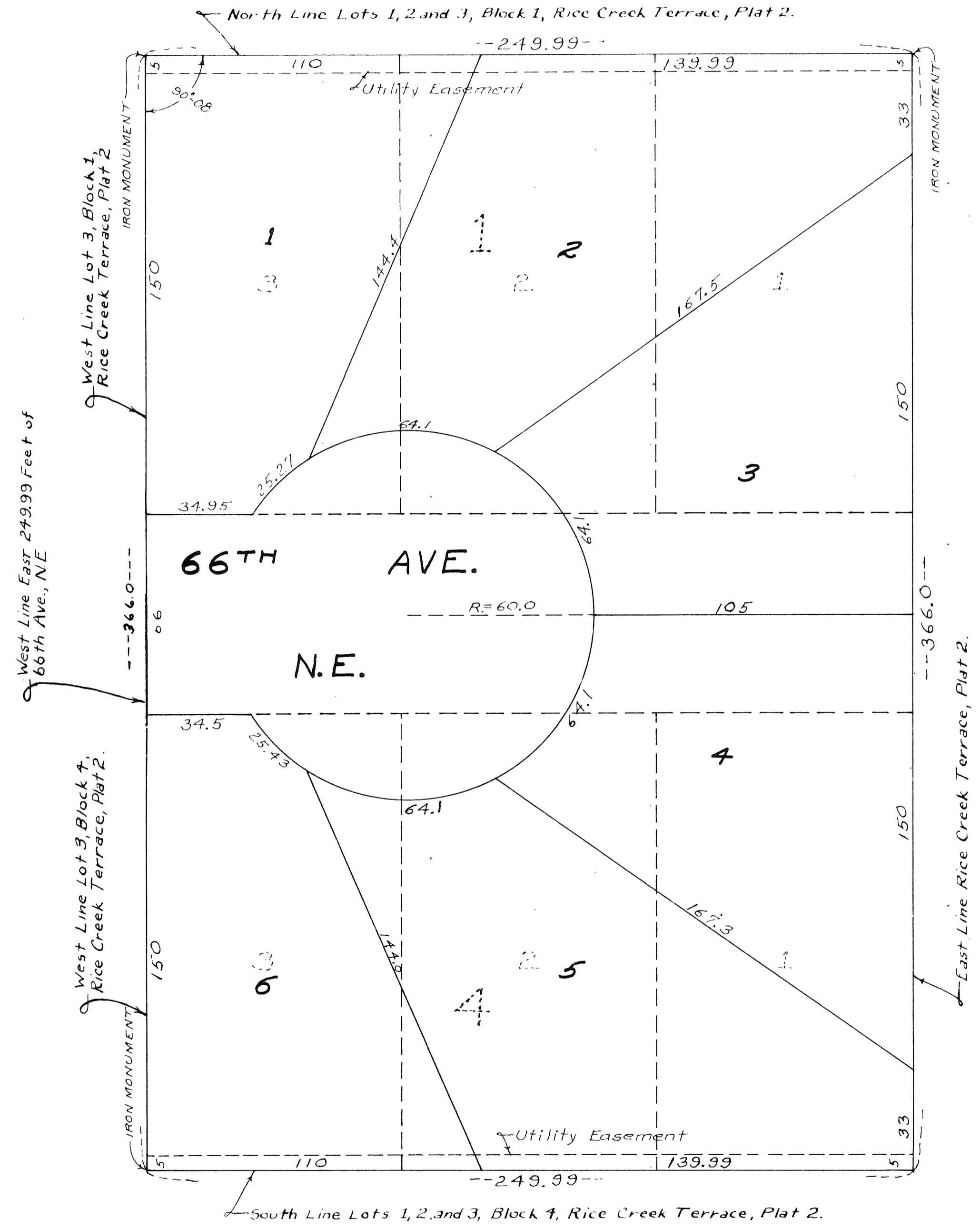


REARRANGEMENT OF LOTS 1-2-3 BLOCK 1 AND LOTS 1-2-3 BLOCK 4 RICE CREEK TERRACE PLAT 2

VILLAGE OF FRIDLEY

CARTWRIGHT & OLSON
LAND SURVEYORS



KNOW ALL MEN BY THESE PRESENTS: That the C.A. Nelson Farms, Inc. a Minnesota corporation, owner and proprietor of the following described property situate in the County of Anoka, State of Minnesota to-wit: Lots 1, 2 and 3, Block 1 and Lots 1, 2 and 3, Block 4, RICE CREEK TERRACE PLAT 2. Also the East 249.99 feet of 66TH AVE. N.E. vacated, in RICE CREEK TERRACE PLAT 2, have caused the same to be surveyed and platted as REARRANGEMENT OF LOTS 1-2-3 BLOCK 1 AND LOTS 1-2-3 BLOCK 4 RICE CREEK TERRACE PLAT 2, and do hereby donate and dedicate to the public for public use forever the Avenue as shown on the annexed plat, also subject to utility easements as shown on the annexed plat. In witness whereof said C.A. Nelson Farms, Inc. has caused these presents to be signed by its proper officers and its corporate seal to be hereunto affixed this 7 day of July A.D. 1952.

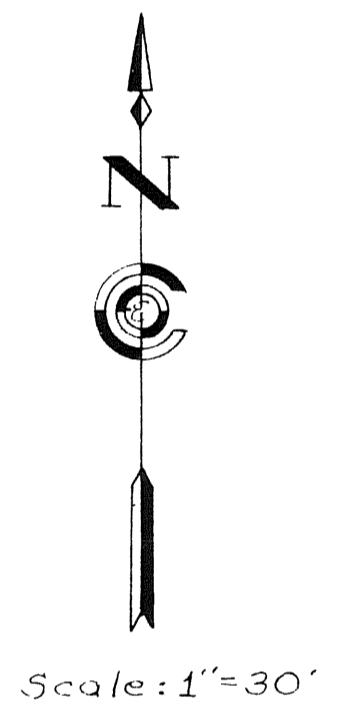
In the presence of

John D. Nelson } As to B.B. Nelson
Patricia Ann Pappas }
John D. Nelson } As to Hattie C.A. Holcombe
Patricia Ann Pappas }

B.B. Nelson
President
Hattie C.A. Holcombe
Secretary

C.A. Nelson Farms, Inc.

STATE OF MINNESOTA } S.S.
COUNTY OF HENNEPIN }
On this 7th day of July A.D. 1952 before me, a Notary Public within and for said County and State personally appeared B.B. Nelson and Hattie C.A. Holcombe, to me personally known, who being by me each duly sworn, did say that they are respectively President and Secretary of C.A. Nelson Farms, Inc., the Corporation named in the foregoing instrument, that the seal affixed to said instrument is the Corporate Seal of said Corporation, and that said instrument was signed and sealed in behalf of said Corporation by authority of its Board of Directors and said B.B. Nelson and Hattie C.A. Holcombe acknowledge said instrument to be the free act and deed of said Corporation.



John D. Nelson
Notary Public, Hennepin County, Minnesota
My Commission Expires April 6, 1958

I hereby certify that I have surveyed and platted the land described in the dedication on this plat as REARRANGEMENT OF LOTS 1-2-3 BLOCK 1 AND LOTS 1-2-3 BLOCK 4 RICE CREEK TERRACE PLAT 2; that this plat is a correct representation of said survey; that all distances are correctly shown on said plat in figures denoting feet and decimals of a foot; that the monuments for the guidance of future surveys have been correctly placed in the ground as shown on said plat; that the topography of the land is correctly shown on said plat; that the outside boundaries of the land are correctly designated on said plat; and that there are no wet lands or public highways to be designated on said plat other than are shown thereon.

James A. Cartwright
Registered Land Surveyor, Minnesota Registration No. 1983

STATE OF MINNESOTA } S.S.
COUNTY OF HENNEPIN }
Above certificate subscribed and sworn to before me, a Notary Public within and for said County and State on this 7 day of July A.D. 1952

John D. Nelson
Notary Public, Hennepin County, Minnesota
My Commission Expires April 6, 1958

We hereby certify that the Village Council of the Village of Fridley, Anoka County, Minnesota, duly accepted and approved the annexed plat of REARRANGEMENT OF LOTS 1-2-3 BLOCK 1 AND LOTS 1-2-3 BLOCK 4 RICE CREEK TERRACE PLAT 2, at a regular meeting thereof held this 7 day of June A.D. 1952

Village of Fridley, Anoka County, Minnesota

Carl Hartman
Mayor
Hard Norling
Clerk

146583
OFFICE OF REGISTER OF DEEDS,
STATE OF MINNESOTA, COUNTY OF ANOKA }
I hereby certify that the within instrument was filed in this office for record on the 7 day of July A.D. 1952 at 7 o'clock P.M. and was duly recorded in book 13 of Plat page 24.
Guinea R. Jensen
Register of Deeds

Hennett H. Campbell
S. Deino

HEREBY CERTIFY THAT TAXES FOR THE YEAR 1951 ON THE LANDS DESCRIBED WITHIN ARE PAID
Walter D. Powers
County Treasurer
By Alta Deputy