

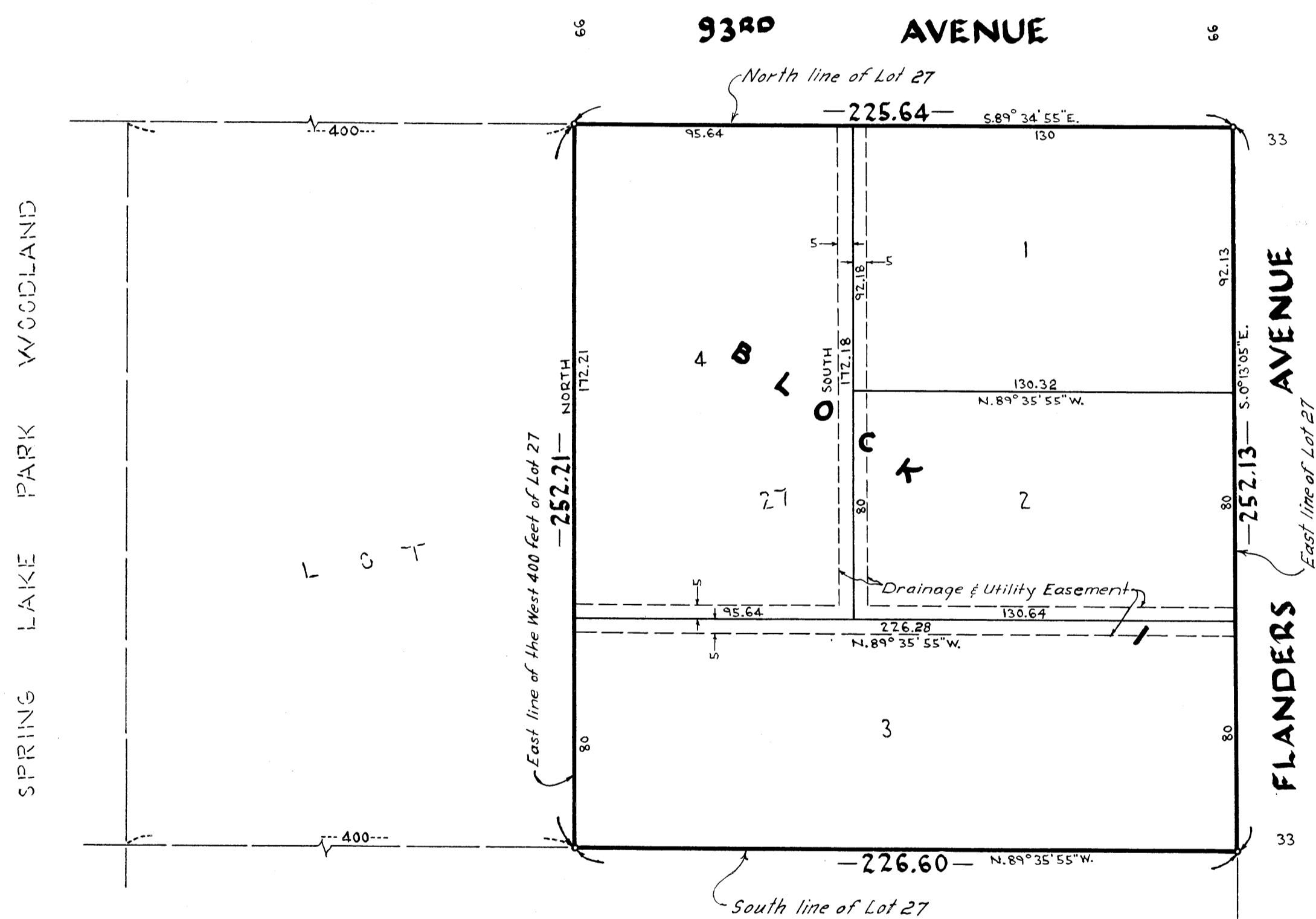
NORTH

RECO HEIGHTS

CITY OF BLAINE — COUNTY OF ANOKA —

o Denotes Iron Monument

SPRING LAKE PARK WOODLAND



SPRING LAKE PARK WOODLAND

LOT 28

Suburban Engineering, Inc.
 — Engineers & Surveyors —
 Bearings are Assumed
 Scale 1"=40' September 1965

KNOW ALL MEN BY THESE PRESENTS: that Frank J. Rekucki and Esther G. Rekucki, his wife, owners and proprietors of the following described property situate in the State of Minnesota and County of Anoka, to-wit: That part of Lot 27, Spring Lake Park Woodland lying East of the West 400 feet thereof; have caused the same to be surveyed and platted as RECO HEIGHTS, subject to the Utility and Drainage Easements as shown on the annexed plat. In witness whereof said Frank J. Rekucki and Esther G. Rekucki, his wife, have hereunto set their hands and seals this 22nd day of October A.D. 1965.

In Presence of

Otto F. Meyer As to Frank J. Rekucki and Frank J. Rekucki Frank J. Rekucki
Marie H. Ness Esther G. Rekucki Esther G. Rekucki Esther G. Rekucki

State of Minnesota County of Anoka On this 22nd day of October A.D. 1965, before me, a Notary Public personally appeared Frank J. Rekucki and Esther G. Rekucki, his wife, to me known to be the persons described in and who executed the foregoing instrument and they acknowledged that they executed the same as their own free act and deed.

Otto F. Meyer
 Notary Public, Anoka County, Minnesota
 My Commission Expires Jan. 30 1972

I hereby certify that I have surveyed and platted the property described on this plat as RECO HEIGHTS; that this plat is a correct representation of said survey; that all distances are correctly shown on the plat in feet and decimals of a foot; that the monuments for guidance of future surveys have been correctly placed in the ground as shown on the plat; that the outside boundary lines are correctly designated on the plat, and that there are no wet lands or public highways to be designated on said plat other than as shown thereon.

E. A. Rathbun
 Surveyor - Minnesota Registration No. 3795

State of Minnesota County of Hennepin The surveyors certify and sworn to before me, a Notary Public, this 5th day of October A.D. 1965.

Warren O. Olson
 Notary Public, Hennepin County, Minnesota
 My Commission Expires Notary Public-Hennepin County, Minn. My Commission Expires July 12, 1967

We hereby certify that the City Council of the City of Blaine, Anoka County, Minnesota, duly accepted and approved the annexed plat of RECO HEIGHTS at a regular meeting thereof held this 7 day of October A.D. 1965.

CITY OF BLAINE, ANOKA COUNTY, MINNESOTA
 by Stefan K. Sveden Mayor
 by Victoria C. Neek Clerk

Checked and approved by me, this 22nd day of October A.D. 1965.

by Robert W. Anderson
 Anoka County Surveyor

Office of REGISTRAR OF TITLES
 STATE OF MINNESOTA
 COUNTY OF ANOKA
 I hereby certify that the within instrument was filed in this office on the 25 day of OCT A. D. 1965 at 8:45 o'clock A.M.
Katherine Skings Registrar of Titles
Eileen Boettcher DEPUTY REGISTRAR OF TITLES

I HEREBY CERTIFY THAT THE TAXES PAYABLE IN THE YEAR 1965 ON THE LANDS DESCRIBED HEREIN ARE PAID
Robert Peterson
 Anoka County Treasurer

TAXES PAID
 This 22nd day of Oct 1965
Kenneth Campbell
 Auditor, Anoka County, Minn.
Raymond deputy