

RED FOX HOLLOW SECOND ADDITION

KNOW ALL PERSONS BY THESE PRESENTS: That Property Revolutions Nine, LLC, a Minnesota limited liability company, owner of the following described property:

That part of the South Half of the Northwest Quarter, Section 36, Township 32, Range 23, lying south of a line 155 feet south of, measured at right angles to and parallel with the north line of said South Half of the Northwest Quarter, EXCEPT Parcel 60, Anoka County Highway Right-of-Way Plat No. 81.

Torrens Property

Has caused the same to be surveyed and platted as RED FOX HOLLOW SECOND ADDITION and does hereby dedicate to the public for public use the public ways, the drainage and utility easements and the park as shown on this plat.

Also dedicating to the County of Anoka the right of access onto County Road No. 17 as shown on this plat.

In witness whereof said Property Revolutions Nine, LLC, a Minnesota limited liability company, has caused these presents to be signed by its proper officer this 21 day of September, 2017.

PROPERTY REVOLUTIONS NINE, LLC

Scott R. Lennes Chief Manager
Scott R. Lennes

STATE OF Minnesota
COUNTY OF Anoka

This instrument was acknowledged before me this 21 day of September, 2017 by Scott R. Lennes, Chief Manager of Property Revolutions Nine, LLC, a Minnesota limited liability company.

TENNIFER J. BOHR
Notary Public, Anoka County, Minnesota
My Commission Expires January 31, 2018

I Jason E. Rud do hereby certify that this plat was prepared by me or under my direct supervision; that I am a duly Licensed Land Surveyor in the State of Minnesota; that this plat is a correct representation of the boundary survey; that all mathematical data and labels are correctly designated on this plat; that all monuments depicted on this plat have been, or will be correctly set within one year; that all water boundaries and wet lands, as defined in Minnesota Statutes, Section 505.01, Subd. 3, as of the date of this certificate are shown and labeled on this plat; and all public ways are shown and labeled on this plat.

Dated this 14th day of SEPTEMBER, 2017.

Jason E. Rud
Jason E. Rud, Licensed Land Surveyor
Minnesota License No. 41578

STATE OF MINNESOTA
COUNTY OF Anoka

This instrument was acknowledged before me this 14th day of September, 2017 by Jason E. Rud.

Nicole A. Johnson
Notary Public, Anoka County, Minnesota
My Commission Expires January 31, 2020

CITY COUNCIL, CITY OF HAM LAKE, MINNESOTA

This plat of RED FOX HOLLOW SECOND ADDITION was approved and accepted by the City Council of the City of Ham Lake, Minnesota at a regular meeting thereof held this 21st day of August, 2017, and said plat is in compliance with the provisions of Minnesota Statutes, Section 505.03, Subd. 2.

City Council, City of Ham Lake, Minnesota
By Demetri Mayor
By Demetri Clerk

COUNTY SURVEYOR

I hereby certify that in accordance with Minnesota Statutes, Section 505.021, Subd. 11, this plat has been reviewed and approved this 21st day of SEPTEMBER, 2017.

Larry D. Holm
Larry D. Holm
Anoka County Surveyor

COUNTY AUDITOR/TREASURER

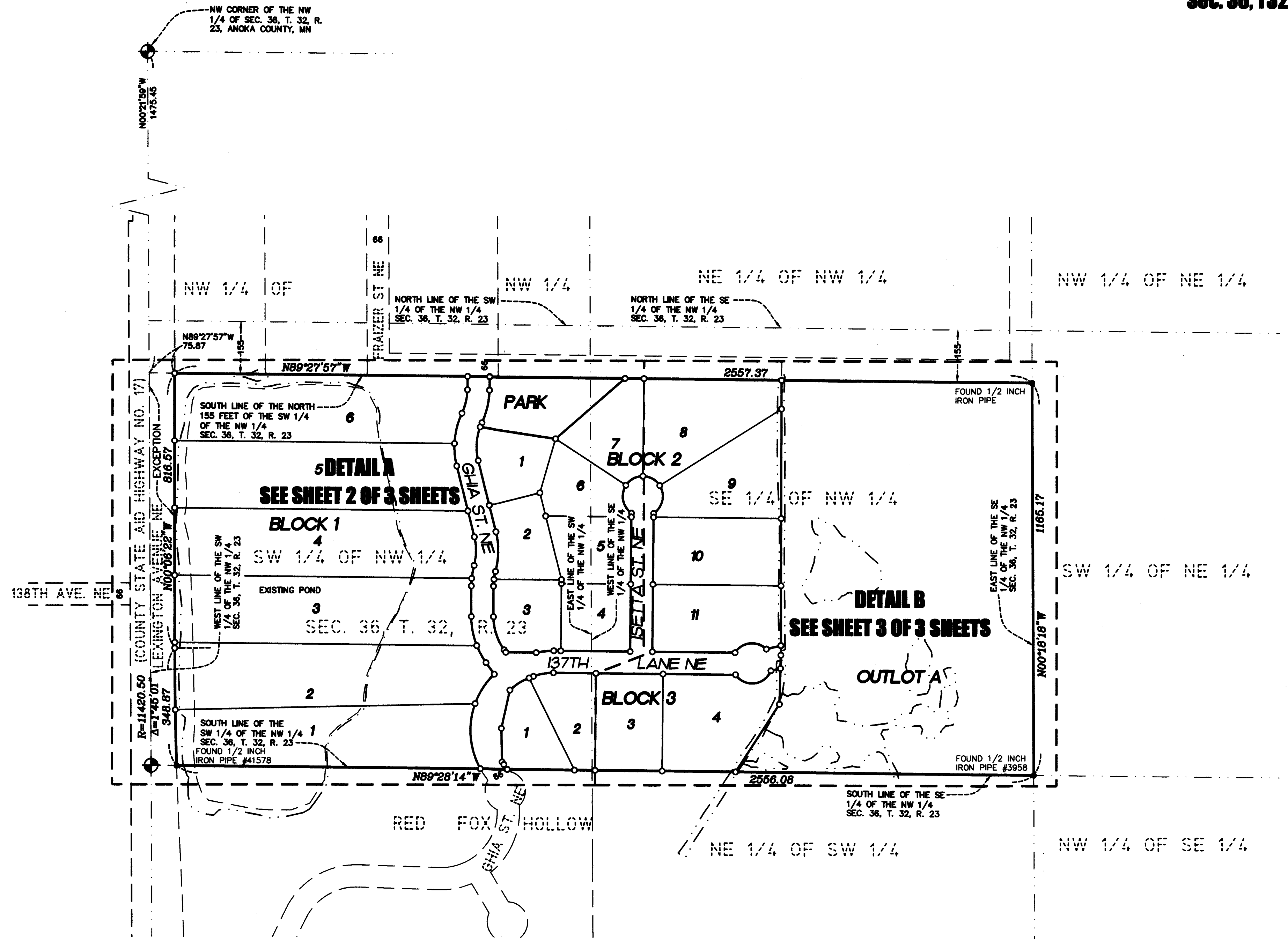
Pursuant to Minnesota Statutes, Section 505.021, Subd. 9, taxes payable in the year 2017 on the land hereinbefore described have been paid. Also, pursuant to Minnesota Statutes, Section 272.12, there are no delinquent taxes and transfer entered this 21st day of September, 2017.

Jonell M Sawyer
Property Tax Administrator
By Jonell M Sawyer Deputy

COUNTY RECORDER/REGISTRAR OF TITLES
COUNTY OF ANOKA, STATE OF MINNESOTA

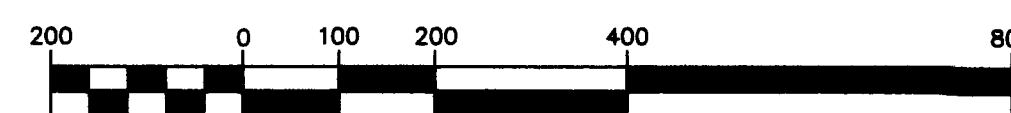
I hereby certify that this plat of RED FOX HOLLOW SECOND ADDITION was filed in the office of the County Recorder/Registrar of Titles for public record on this 21st day of September, 2017 at 10:17 o'clock A.M. and was duly recorded in as Document Number 551963.001

Jonell M Sawyer
County Recorder/Registrar of Titles
By Jonell M Sawyer Deputy



NORTH

GRAPHIC SCALE



(SCALE IN FEET)
1 inch = 200 feet

LEGEND

- DENOTES FOUND ANOKA COUNTY CAST IRON MONUMENT
- DENOTES IRON MONUMENT FOUND AS LABELED
- DENOTES 1/2 INCH BY 14 INCH IRON PIPE TO BE SET WITHIN ONE YEAR OF RECORDING, MARKED RLS NO. 41578
- DENOTES WETLAND DELINEATED BY JACOBSON ENVIRONMENTAL ON 8/10/15

For the purposes of this plat, the South line of the Southwest Quarter of the Northwest Quarter of Section 36, Township 32, Range 23, Anoka County, Minnesota is assumed to have a bearing of North 89 degrees 28 minutes 14 seconds West.

E. G. RUD & SONS, INC. \$5600
EST. 1977 Professional Land Surveyors

RED FOX HOLLOW SECOND ADDITION

City of Ham Lake
County of Anoka
Sec. 36, T32, R23

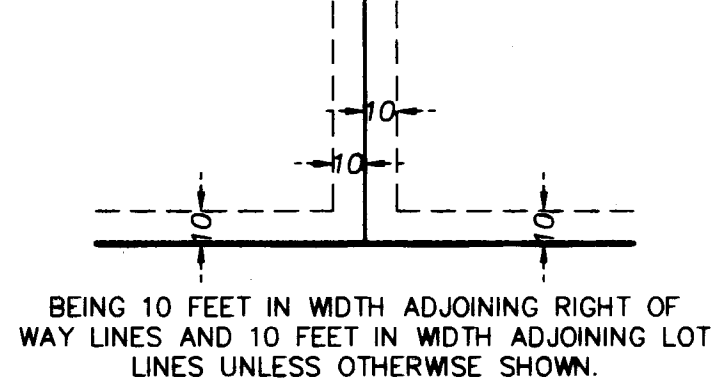
DETAIL A

138TH AVE NE

BENCHMARK

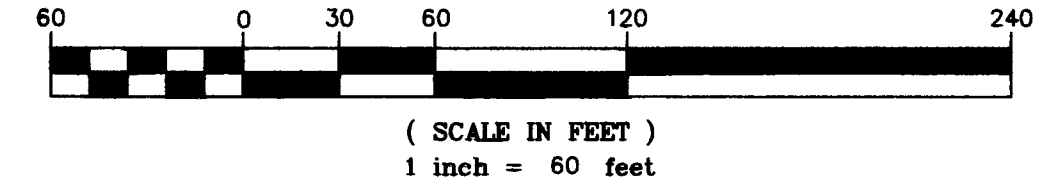
MNDOT GSID STATION # 62911
MNDOT NAME: ANOKA BM 10
ELEVATION: 897.50 (NAVD 88)

DRAINAGE AND UTILITY EASEMENTS ARE SHOWN THUS:



NORTH

GRAPHIC SCALE

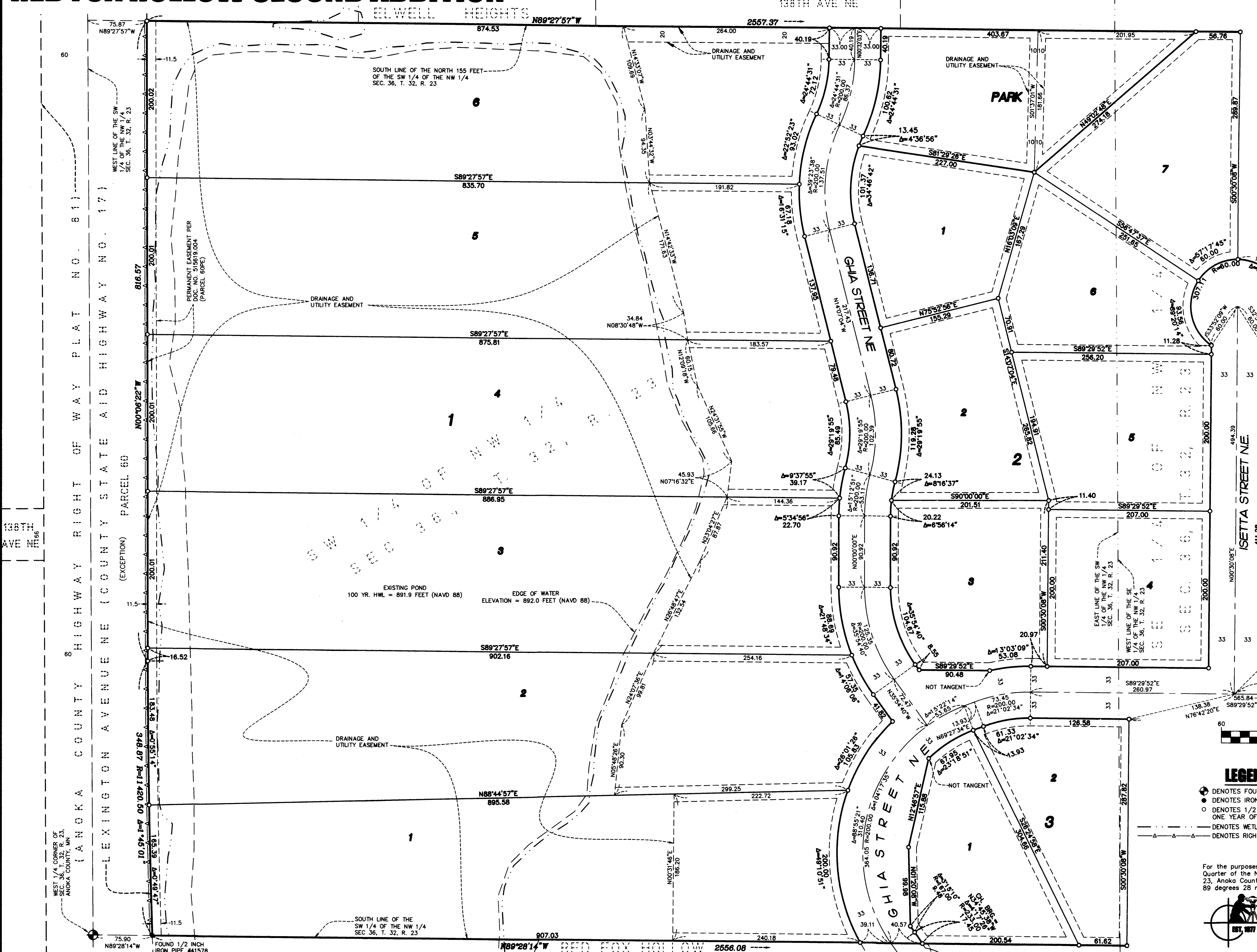


LEGEND

- ⊕ DENOTES FOUND ANOKA COUNTY CAST IRON MONUMENT
- DENOTES IRON MONUMENT FOUND AS LABELED
- DENOTES 1/2 INCH BY 14 INCH IRON PIPE TO BE SET WITHIN ONE YEAR OF RECORDING, MARKED RLS NO. 41578
- DENOTES WETLAND DELINEATED BY JACOBSON ENVIRONMENTAL ON 8/10/15
- DENOTES RIGHT OF ACCESS DEDICATED TO ANOKA COUNTY

For the purposes of this plat, the South line of the Southwest Quarter of the Northwest Quarter of Section 36, Township 32, Range 23, Anoka County, Minnesota is assumed to have a bearing of North 89 degrees 28 minutes 14 seconds West.

E. G. RUD & SONS, INC.
EST. 1877 Professional Land Surveyors



EXISTING POND
100 YR. H.W.L. = 891.9 FEET (NAVD 88)
EDGE OF WATER
ELEVATION = 892.0 FEET (NAVD 88)

HIGHWAY RIGHT OF WAY PLAT NO. 811
LEXINGTON AVENUE NE (COUNTY STATE AID HIGHWAY NO. 17)
(EXCEPTION) PARCEL 60

WEST 1/4 CORNER OF SECTION 36, T32, R23, ANOKA COUNTY, MN.

FOUND 1/2 INCH IRON PIPE #41578

RED FOX HOLLOW

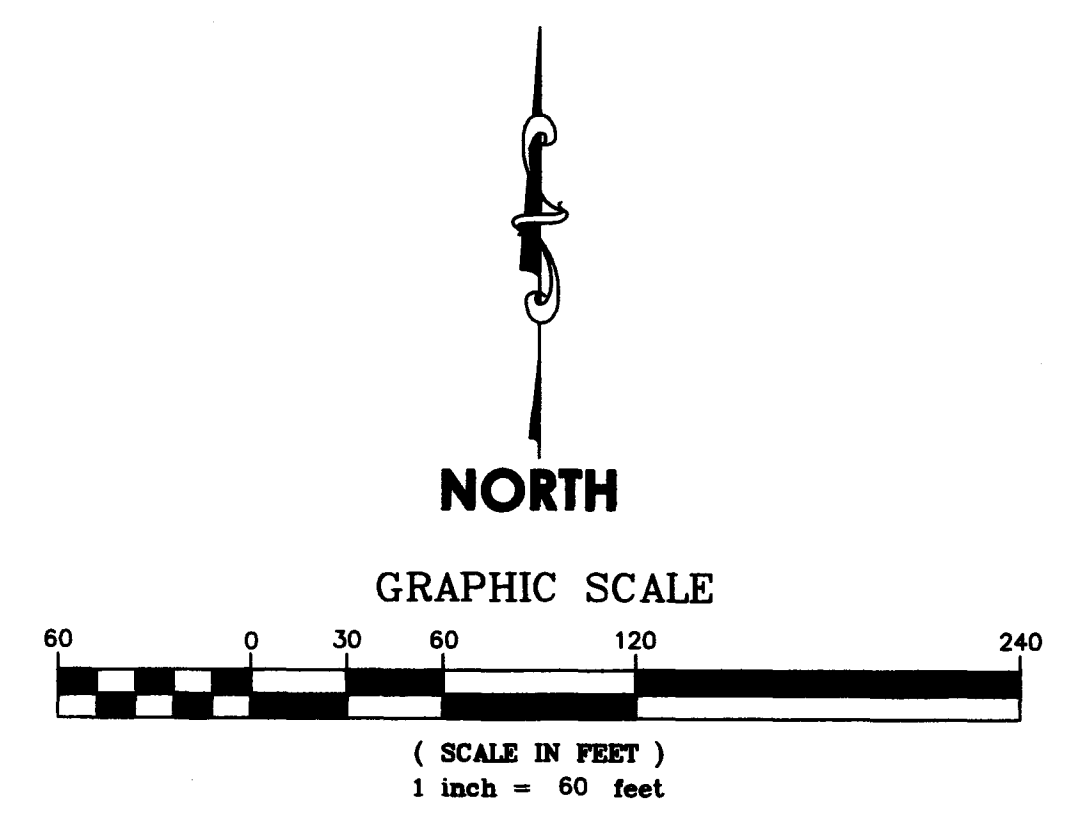
RED FOX HOLLOW SECOND ADDITION

City of Ham Lake
County of Anoka
Sec. 36, T32, R23

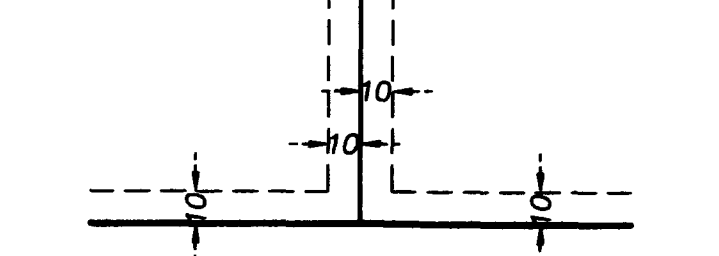
BENCHMARK

MNDOT GSID STATION # 62911
MNDOT NAME: ANOKA BM 10
ELEVATION: 897.50 (NAVD 88)

DETAIL B



DRAINAGE AND UTILITY EASEMENTS ARE SHOWN THUS:



BEING 10 FEET IN WIDTH ADJOINING RIGHT OF WAY LINES AND 10 FEET IN WIDTH ADJOINING LOT LINES UNLESS OTHERWISE SHOWN.

LEGEND

- DENOTES IRON MONUMENT FOUND AS LABELED
- DENOTES 1/2 INCH BY 14 INCH IRON PIPE TO BE SET WITHIN ONE YEAR OF RECORDING, MARKED RLS NO. 41578
- DENOTES WETLAND DELINEATED BY JACOBSON ENVIRONMENTAL ON 8/10/15

For the purposes of this plat, the South line of the Southwest Quarter of the Northwest Quarter of Section 36, Township 32, Range 23, Anoka County, Minnesota is assumed to have a bearing of North 89 degrees 28 minutes 14 seconds West.

