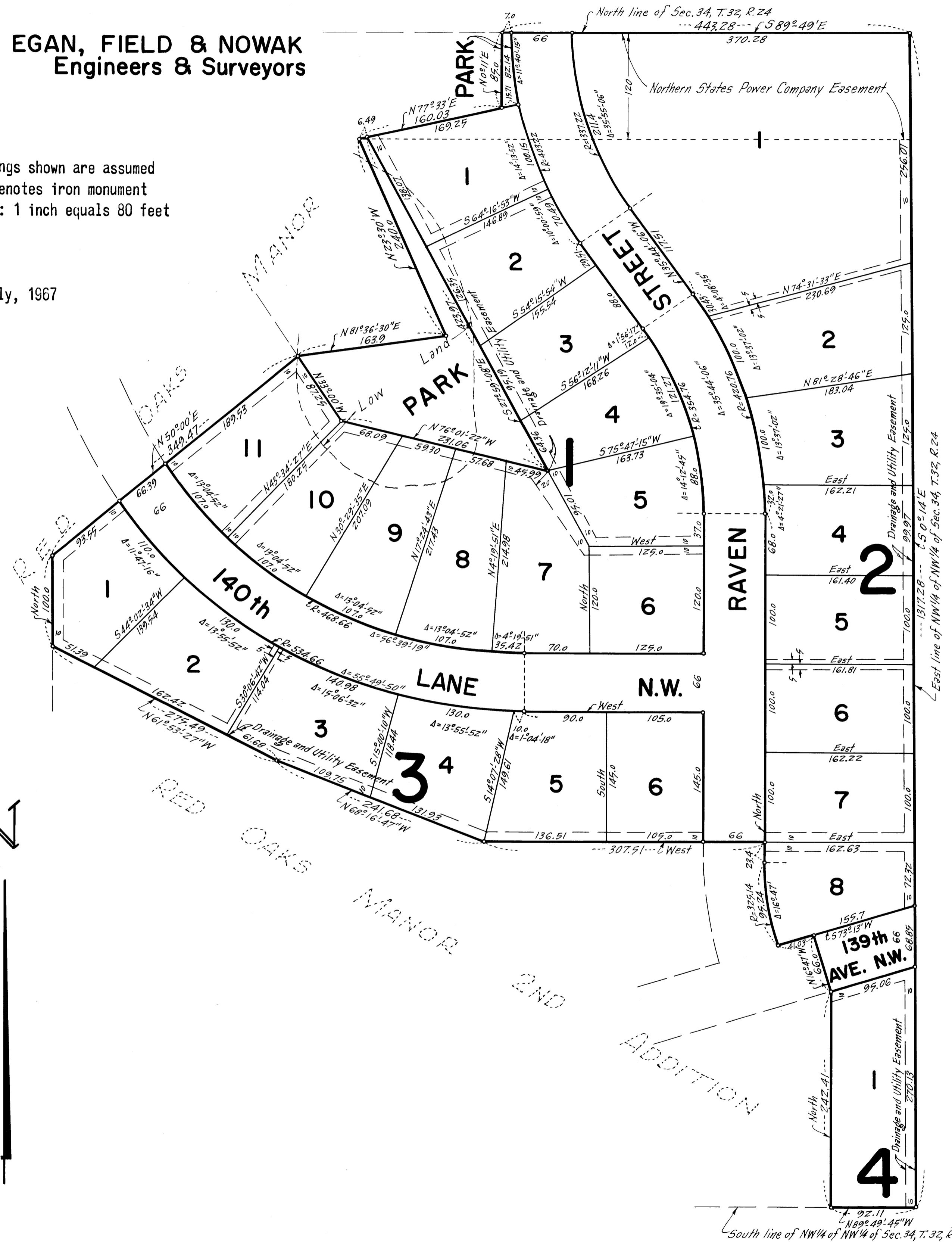


# RED OAKS MANOR 3RD ADDITION

EGAN, FIELD & NOWAK  
Engineers & Surveyors

Bearings shown are assumed  
"o" Denotes iron monument  
Scale: 1 inch equals 80 feet

July, 1967



Know all men by these presents that Gilbert A. Menkveld, single, owner and proprietor of the following described property situate in the State of Minnesota and County of Anoka, to wit: that part of the Northwest 1/4 of the Northwest 1/4 of Section 34, Township 32, Range 24, Anoka County, Minnesota, which lies Easterly of RED OAKS MANOR and RED OAKS MANOR 2ND ADDITION. Have caused the same to be surveyed and platted as Lane and Easements for drainage and utility purposes as shown on the plat. In witness whereof Gilbert A. Menkveld, single, has hereunto set his hand and seal this 21 day of August A.D. 1967.

In presence of:-  
Phyllis Gallaway as to Gilbert A. Menkveld  
Mary Bakken

Signed:-  
Gilbert A. Menkveld (seal)  
Gilbert A. Menkveld

STATE OF MINNESOTA )  
COUNTY OF ANOKA ) S.S. On this 21 day of August A.D. 1967, before me a Notary Public, personally appeared Gilbert A. Menkveld, single, to me known to be the person described in and who executed the foregoing instrument, and he acknowledged that he executed the same as his own free act and deed.

K. B. Skurdal  
Notary Public, Anoka County, Minnesota  
My commission expires \_\_\_\_\_

K. B. SKURDAL  
Notary Public, Anoka County, Minn.  
My Commission Expires Aug. 14, 1970

I hereby certify that I have surveyed and platted the property described on this plat as RED OAKS MANOR 3RD ADDITION; that this plat is a correct representation of said survey; that all distances are correctly shown on the plat in feet and decimals of a foot; that all monuments have been correctly placed in the ground as shown; that the outside boundary lines are correctly designated on the plat and that there are no wet lands or public highways to be designated on said plat other than as shown thereon.

Edward J. Ostrlund  
Surveyor - Minnesota Registration No. 2264

STATE OF MINNESOTA )  
COUNTY OF HENNEPIN ) S.S. Above certificate subscribed and sworn to before me a Notary Public, this 4<sup>th</sup> day of August A.D. 1967.

Arthur E. Ostrlund  
Arthur E. Ostrlund  
Notary Public, Hennepin County, Minnesota  
My commission expires October 23, 1967.

The annexed plat of RED OAKS MANOR 3RD ADDITION was approved and accepted by the Town Board of the Township of Grow, Minnesota at a regular meeting held this 4 day of August A.D. 1967.

by Garland R. Polse Chairman  
by Garland R. Polse Clerk

Recommended for approval this 14<sup>th</sup> day of September A.D. 1967.

E. J. Sundheim  
Anoka County Highway Engineer

Approved as to form and execution this 15<sup>th</sup> day of September A.D. 1967.

Robert E. Johnson  
Anoka County Attorney

This plat was approved and accepted by the Board of County Commissioners of the County of Anoka, State of Minnesota, at a regular meeting held this 22nd day of August A.D. 1967.

Edgar W. Johnson Chairman  
Samuel W. Johnson County Auditor

Checked and approved this 13<sup>th</sup> day of September A.D. 1967.

Robert W. Anderson  
Anoka County Surveyor

OFFICE OF REGISTER OF DEEDS  
STATE OF MINNESOTA, COUNTY OF ANOKA } ss

I hereby certify that the within instrument was filed in this office for record on the 21 day of SEP. 18 1967 A.D., 1967 at 2 o'clock P.M., and was duly recorded in book 2 of Plats page 2

Ed J. Ostrlund  
Register of Deeds  
By Margaret Russell Deputy

TAXES PAID

This 18<sup>th</sup> day of Sept 1967  
Wm. W. Campbell  
Auditor, Anoka County, Minn.

I HEREBY CERTIFY THAT THE TAXES PAYABLE IN THE YEAR 1967 ON THE LANDS DESCRIBED HEREIN ARE PAID  
Ed J. Ostrlund  
Anoka County Treasurer