

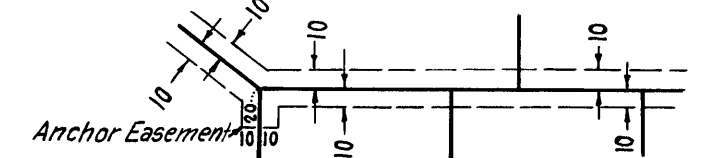
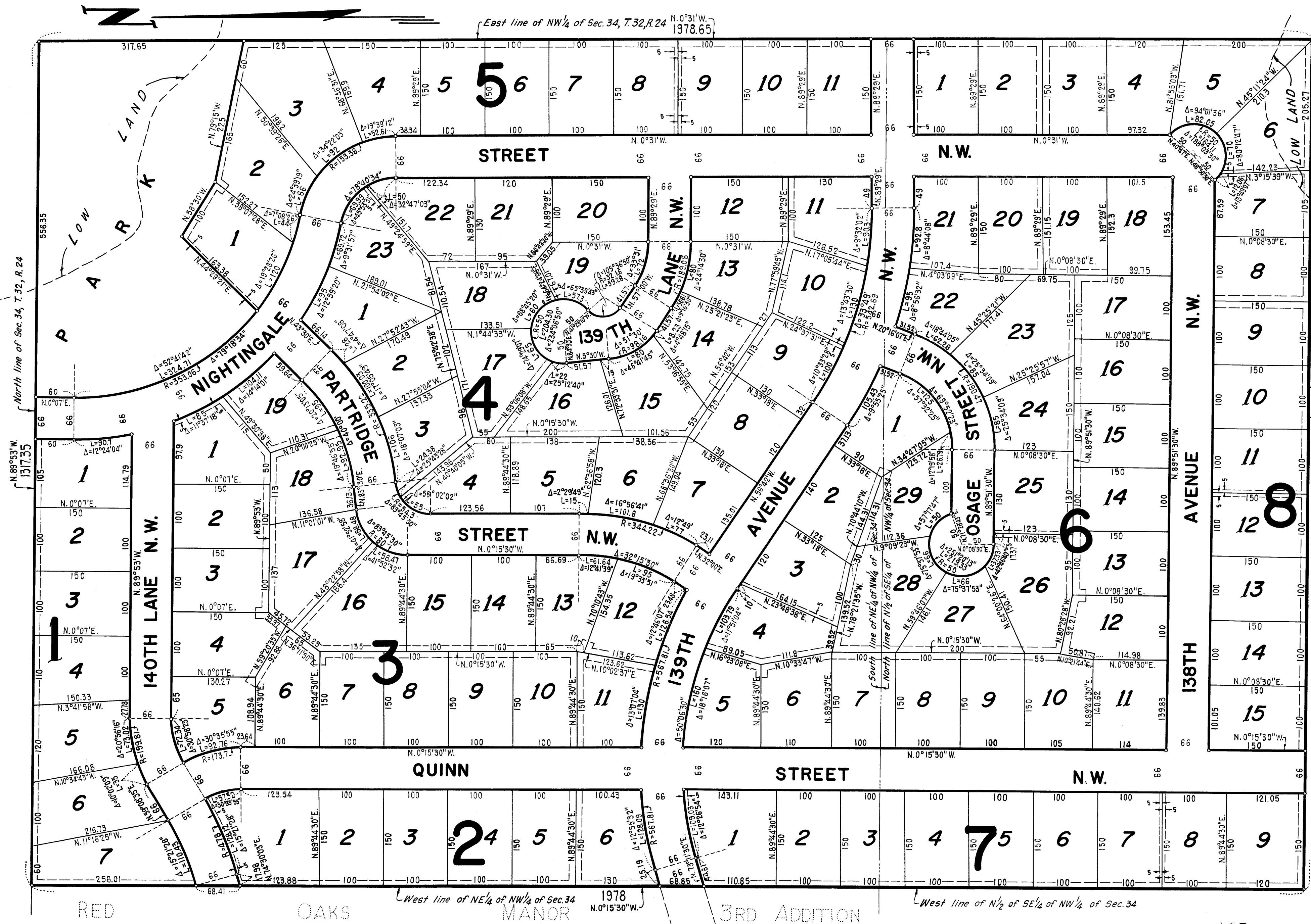
RED OAKS MANOR 4TH ADDITION

BEARINGS SHOWN ARE ASSUMED
◦ DENOTES IRON MONUMENT

GROW TOWNSHIP
JANUARY, 1969

SCALE: 1 INCH EQUALS 100 FEET

EGAN, FIELD & NOWAK
SURVEYORS



Drainage and Utility Easements shown thus.
Being 10 feet and parallel with lot lines unless otherwise shown.

Know all men by these presents that Gilbert A. Menkveld, single, owner and proprietor of the following described property situate in the State of Minnesota and County of Anoka, to wit: The Northeast 1/4 of the Northwest 1/4 and the North 1/2 of the Southeast 1/4 of the Northwest 1/4 of Section 34, Township 32, Range 24, according to the United States Government Survey thereof, have caused the same to be surveyed and platted as RED OAKS MANOR 4TH ADDITION and do hereby donate and dedicate to the public for public use forever the avenues, streets, lanes, park and easements for drainage and utility purposes as shown on the plat. In witness whereof Gilbert A. Menkveld, single, has hereunto set his hand and seal this 21st day of Feb 1969 A.D. 1969.

In presence of: Blanch A. Amundson Signed: Gilbert A. Menkveld (seal)
Darryl D. Talle

STATE OF MINNESOTA) S.S. On this 21 day of Feb. A.D. 1969, before me a Notary Public, personally appeared Gilbert A. Menkveld, single, to me known to be the person described in and who executed the foregoing instrument, and he acknowledged that he executed the same as his own free act and deed.

Notary Public, Anoka County, Minnesota
My commission expires _____

I hereby certify that I have surveyed and platted the property described on this plat as RED OAKS MANOR 4TH ADDITION; that this plat is a correct representation of said survey; that all distances are correctly shown on the plat in feet and decimals of a foot; that all monuments have been correctly placed in the ground as shown; that the outside boundary lines are correctly designated on the plat and that there are no wet lands or public highways to be designated on said plat other than as shown thereon.

Arthur E. Wetland
Surveyor - Minnesota Registration No. 6122

STATE OF MINNESOTA) S.S. Above certificate subscribed and sworn to before me a Notary Public, this 4th day of FEBRUARY A.D. 1969.

Chris Kuntz
Notary Public, Hennepin County, Minnesota
My commission expires March 4, 1975.

The annexed plat of RED OAKS MANOR 4TH ADDITION was approved and accepted by the Town Board of the Township of Grow, Minnesota at a regular meeting held this 11th day of Feb. A.D. 1969.

by John Appleby Chairman
by John Appleby Clerk

Recommended for approval this 11 day of February A.D. 1969.
Ed Lundholm
Anoka County Highway Engineer

Approved as to form and execution this 14th day of April A.D. 1969.
Robert W. Johnson
Anoka County Attorney

This plat was approved and accepted by the Board of County Commissioners of the County of Anoka, State of Minnesota at a regular meeting held this 18th day of March A.D. 1969.

Ray Peterson Chairman
Wesley Anderson Deputy County Auditor

Checked and approved this 18th day of March A.D. 1969.
Roland W. Anderson
Anoka County Surveyor

OFFICE OF REGISTER OF DEEDS
STATE OF MINNESOTA, COUNTY OF ANOKA

I hereby certify that the within instrument was filed in this office on the record on this 21st day of Feb. A.D. 1969 at 2:00 o'clock P.M. and was duly recorded on page 4 of Plate 2053.

Fred J. Ombahl
Register of Deeds
By Margaret Russell Deputy

TAXES PAID

This 21st day of April 1969
Kenneth W. Campbell
Auditor, Anoka County, Minn.

I HEREBY CERTIFY THAT THE TAXES PAYABLE IN THE YEAR 1969 ON THE LANDS DESCRIBED WITHIN ARE PAID
Robert A. Peterson
Anoka County Treasurer
By L. J. Jansen Deputy