

REGENCY POND 3RD ADDITION

CITY OF RAMSEY, COUNTY OF ANOKA

KNOW ALL PERSONS BY THESE PRESENTS: That Oakwood Land Development, Inc., a Minnesota Corporation, owner and proprietor, Builders Mortgage Corporation mortgagee, of the following described property situated in the County of Anoka, State of Minnesota, to wit:

Outlot A, Regency Pond 2nd Addition.

Have caused the same to be surveyed, platted and known as REGENCY POND 3RD ADDITION and does hereby donate and dedicate to the public, for public use forever the Avenues, Streets, Lanes and also dedicate the drainage and utility easements as shown on the plat.

In witness whereof, said Oakwood Land Development, Inc., a Minnesota corporation, has caused these presents to be signed by its proper officers this 9th day of June 1998

OAKWOOD LAND DEVELOPMENT, INC.

By [Signature]
John R. Peterson, President

State of Minnesota
County of Anoka

The foregoing instrument was acknowledged before me this 9th day of June 1998 by John R. Peterson, President of Oakwood Land Development, Inc., a Minnesota Corporation, on behalf of the corporation.

[Signature]
Notary Public, Anoka County, Minnesota
My commission expires Jan 31, 2000

1354109
OFFICE OF COUNTY RECORDER
STATE OF MINNESOTA, COUNTY OF ANOKA
I hereby certify that the within instrument was filed in this office for record on the July 6 A.D., 1998 at 4:45 o'clock A.M., and was duly recorded in book 56 page 1
Edward M. Treaska
County Recorder
By SSK
Deputy

Also in witness whereof, said Builders Mortgage Corporation, a Minnesota Corporation, mortgagee, has caused these presents to be signed by its proper officers this 10th day of June 1998

BUILDERS MORTGAGE CORPORATION

By [Signature]
Ronald G. Stratton, President

State of Minnesota
County of Anoka

The foregoing instrument was acknowledged before me this 10th day of June 1998 by Ronald G. Stratton, President of Builders Mortgage Corporation a Minnesota Corporation on behalf of the corporation.

[Signature]
Notary Public, Anoka County, Minnesota
My commission expires 1-31-2000

I, Donald E. Sigety, hereby certify that I have surveyed and platted the property described on this plat as REGENCY POND 3RD ADDITION, that this plat is a correct representation of the survey, that all distances are correctly shown on the plat in feet and hundredths of a foot, that all monuments have been correctly placed in the ground as shown or will be correctly placed in the ground as designated; that the outside boundary lines are correctly designated on the plat and that there are no wet lands or public highways to be designated other than as shown.

[Signature]
Donald E. Sigety, Land Surveyor
Minnesota License Number 23945

State of Minnesota
County of Anoka

The foregoing Surveyor's Certificate was acknowledged before me this 9th day of June 1998 by Donald E. Sigety, Minnesota License No. 23945

[Signature]
Notary Public, Anoka County, Minnesota
My commission expires Jan 31, 2000

RAMSEY, MINNESOTA

This plat of REGENCY POND 3RD ADDITION was approved and accepted by the City Council of the City of Ramsey, Minnesota, at a regular meeting thereof held this 14th day of October, 1997. If applicable, the written comments and recommendations of the Commissioner of Transportation and the County Highway Engineer have been received by the city or the prescribed 30 day period has elapsed without receipt of such comments and recommendations, as provided by Minn. Statutes, Section 505.03, Subd. 2.

CITY COUNCIL OF THE CITY OF RAMSEY, MINNESOTA

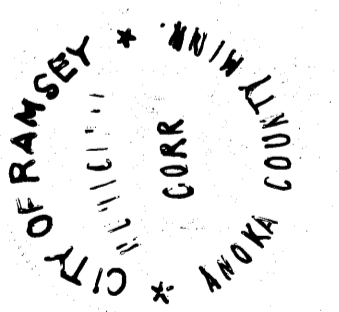
[Signature] Mayor
[Signature] City Administrator

ANOKA COUNTY SURVEYOR

I hereby certify that this plat has been checked and approved this 6th day of JULY, 1998

By [Signature]
LARRY D. HOUM, Anoka County Surveyor

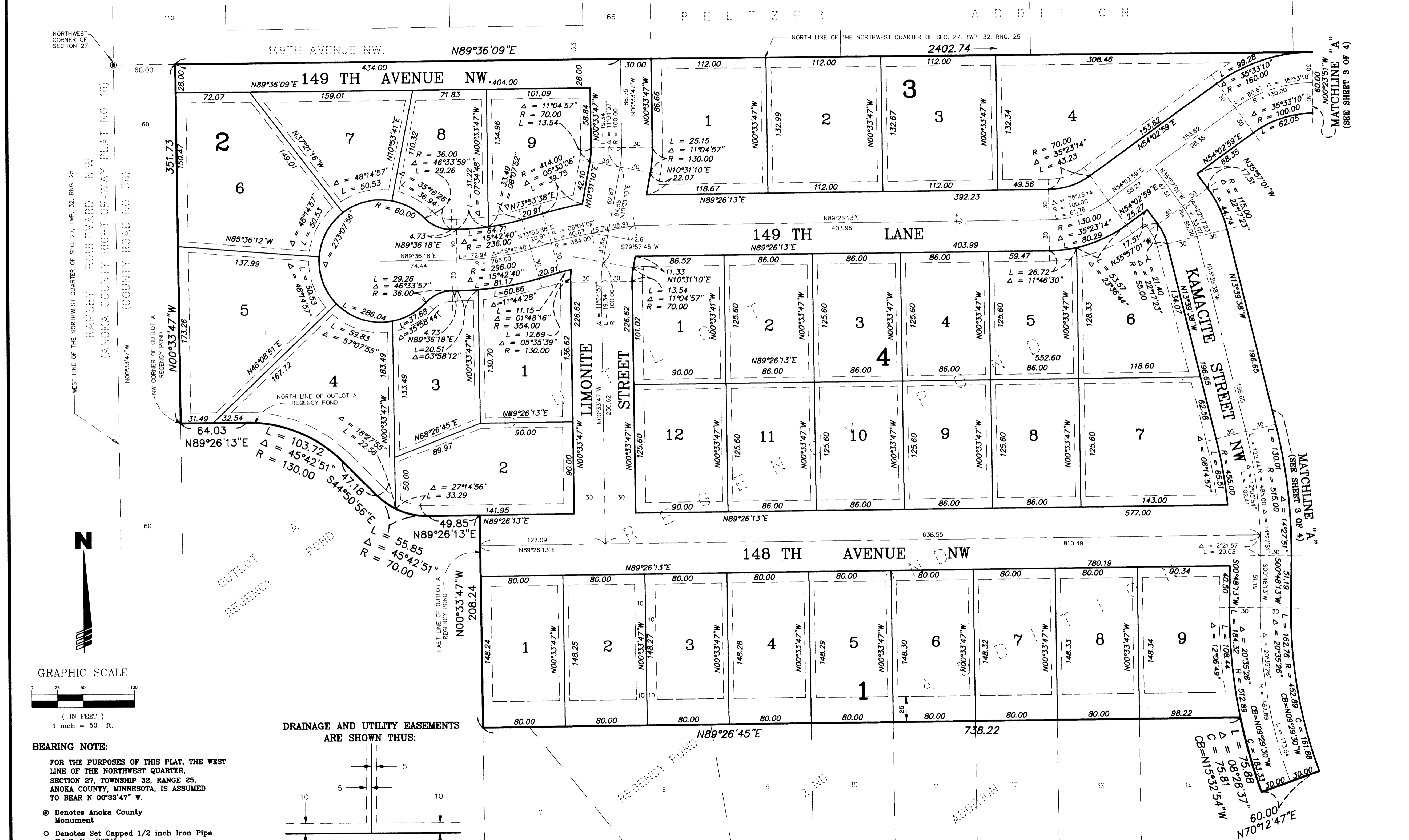
I HEREBY CERTIFY THAT THE CURRENT AND DELINQUENT TAXES ON THE LANDS DESCRIBED WITHIN ARE PAID AND THE TRANSFER IS ENTERED
[Signature]
PROPERTY TAX ADMINISTRATOR
DEPUTY PROPERTY TAX ADMINISTRATION



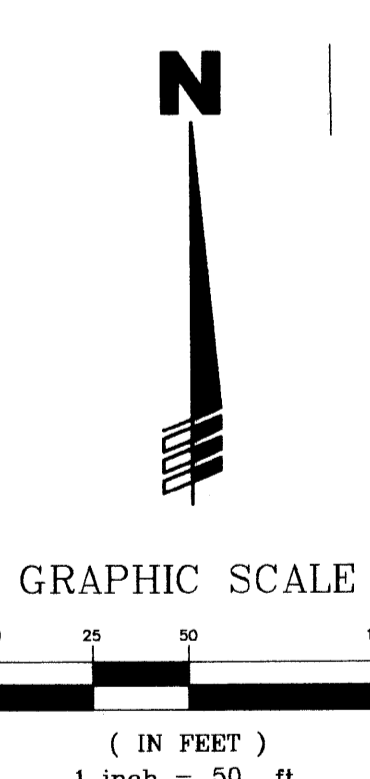
PASSE ENGINEERING, INC.
REGISTERED PROFESSIONAL ENGINEERS
LICENSED LAND SURVEYORS

REGENCY POND 3RD ADDITION

CITY OF RAMSEY, COUNTY OF ANOKA

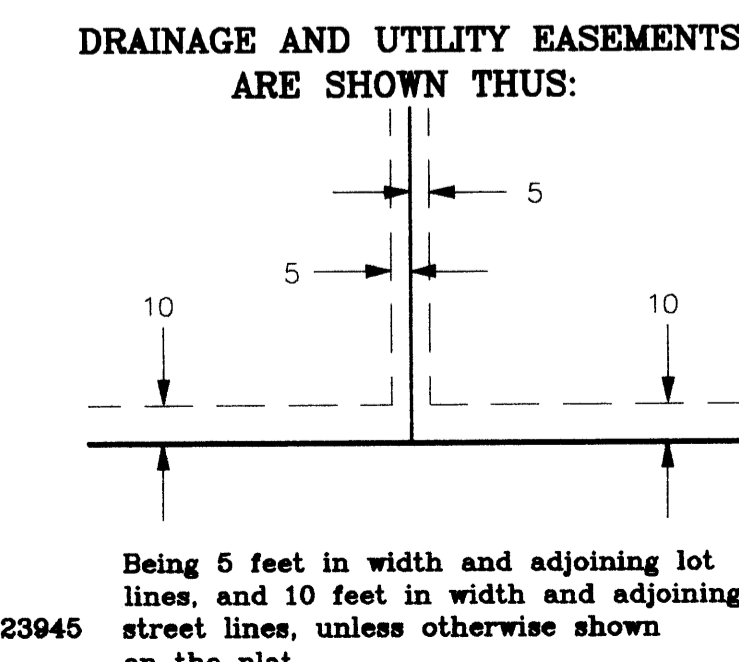


NORTHWEST CORNER OF SECTION 27
 WEST LINE OF THE NORTHWEST QUARTER OF SEC. 27, TWP. 32, RING. 25
 RAMSEY BOULEVARD N.W.
 ANOKA COUNTY RIGHT-OF-WAY PLAT NO. 161
 COUNTY ROAD NO. 56
 ANOKA COUNTY ROAD NO. 56



BEARING NOTE:
 FOR THE PURPOSES OF THIS PLAT, THE WEST LINE OF THE NORTHWEST QUARTER, SECTION 27, TOWNSHIP 32, RANGE 25, ANOKA COUNTY, MINNESOTA, IS ASSUMED TO BEAR N 00°33'47" W.

- Denotes Anoka County Monument
- Denotes Set Capped 1/2 inch Iron Pipe R.L.S. No. 23945

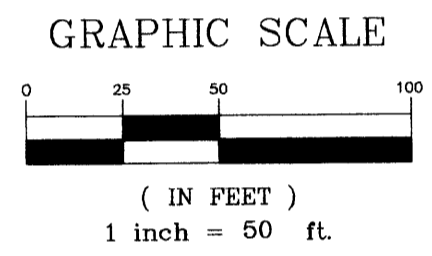
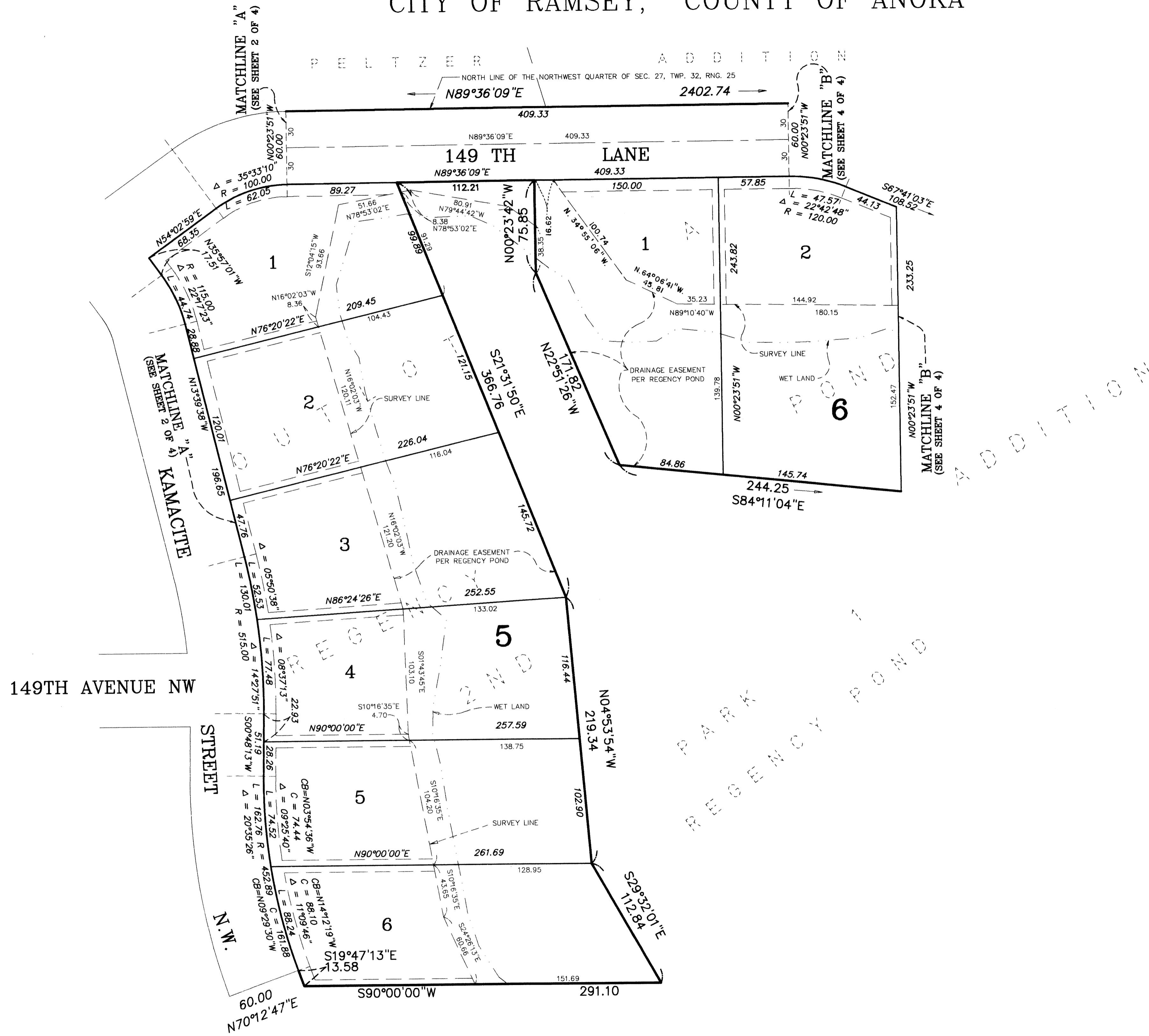


ALL MONUMENTS REQUIRED BY MINNESOTA STATUTE AND NOT SHOWN ON THIS PLAT, WILL BE SET WITHIN 1 YEAR OF THE RECORDING DATE OF THIS PLAT, AND SHALL BE EVIDENCED BY A 1/2 INCH BY 14 INCH IRON PIPE MARKED BY R.L.S. NO. 23945

PASSE ENGINEERING, INC.
 REGISTERED PROFESSIONAL ENGINEERS
 LICENSED LAND SURVEYORS

REGENCY POND 3RD ADDITION

CITY OF RAMSEY, COUNTY OF ANOKA



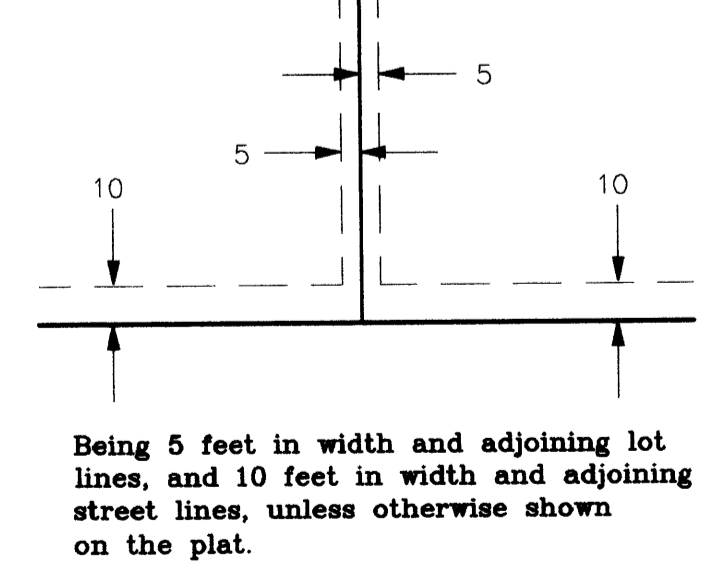
BEARING NOTE:

FOR THE PURPOSES OF THIS PLAT, THE WEST LINE OF THE NORTHWEST QUARTER, SECTION 27, TOWNSHIP 32, RANGE 25, ANOKA COUNTY, MINNESOTA, IS ASSUMED TO BEAR N 00°33'47" W.

- ⊙ Denotes Anoka County Monument
- Denotes Set Capped 1/2 inch Iron Pipe R.L.S. No. 23945

ALL MONUMENTS REQUIRED BY MINNESOTA STATUTE AND NOT SHOWN ON THIS PLAT, WILL BE SET WITHIN 1 YEAR OF THE RECORDING DATE OF THIS PLAT, AND SHALL BE EVIDENCED BY A 1/2 INCH BY 14 INCH IRON PIPE MARKED BY R.L.S. NO. 23945

DRAINAGE AND UTILITY EASEMENTS ARE SHOWN THUS:



PASSE ENGINEERING, INC.
REGISTERED PROFESSIONAL ENGINEERS
LICENSED LAND SURVEYORS

