

REISLING PARK NORTH

City of Coon Rapids, Anoka County, Minnesota

KNOW ALL MEN BY THESE PRESENTS: That Programmed Land, Inc., a Minnesota Corporation, fee owner; and that Midland Credit Corporation, a Minnesota Corporation, mortgagee; and that Commonwealth Development Co., a Minnesota Corporation, contract purchaser, of the follow described property situated in the State of Minnesota, County of Anoka, to-wit:

The Southeast Quarter of the Southwest Quarter, Section 8, Township 31, Range 24. Together with all that part of the Northeast Quarter of the Northwest Quarter of Section 17, Township 31, Range 24 lying Northerly of the centerline of the established Highway running from the City of Anoka to the City of Minneapolis, as said Highway runs through said section, excepting however, that part thereof described as follows: The East 90.00 feet, except the North 410.00 feet; and the West 297.00 feet of the East 387.00 feet, except the North 525.00 feet. (Now known as a part of Lot 1, Auditor's Subdivision No. 35). Also excepting therefrom all that part of said Northeast Quarter of the Northwest Quarter lying Easterly of the Westerly line of the duly recorded plat of OAKMONT PARK.

Have caused the same to be surveyed and platted as REISLING PARK NORTH, and do hereby donate and dedicate to the public for the public use forever the Avenue, Boulevards, Highway, Lanes, and Streets as shown on this plat. Also dedicating to the public, the easements as shown on this plat for drainage and utility purposes, and utility purposes only. In witness whereof said Programmed Land, Inc. has caused these presents to be signed by its proper officer and its corporate seal to be hereunto affixed this 4th day of December, 1980, A.D.

PROGRAMMED LAND, INC.

By: William M. Edes
William M. Edes, Vice President

Also in witness whereof, said Midland Credit Corporation has caused these presents to be signed by its proper officers and its corporate seal to be hereunto affixed this 4th day of December, 1980, A.D.

MIDLAND CREDIT CORPORATION

By: Sigurd Sampson, Its: President By: John Sessaad, Its: Assistant Secretary

Also in witness whereof, said Commonwealth Development Co., has caused these presents to be signed by its proper officers this 4th day of December, 1980, A.D.

COMMONWEALTH DEVELOPMENT CO.

By: Larry F. Cramblit, Larry F. Cramblit, Pres. By: Lyle E. McLaughlin, Lyle E. McLaughlin, Sec.

The foregoing instrument was acknowledged before me this 4th day of December, 1980, A.D. by William M. Edes, Vice President of Programmed Land, Inc., a Minnesota Corporation, on behalf of the corporation.

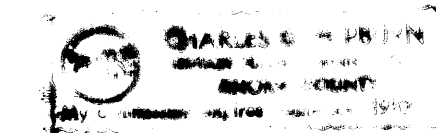


Joanne E. Gough Notary Public, Hennepin County, Minnesota
My Commission Expires: May 13 1987

The foregoing instrument was acknowledged before me this 4th day of December, 1980, A.D. by Sigurd Sampson, President and by John Sessaad, Assistant Secretary of Midland Credit Corporation, a Minnesota Corporation, on behalf of the corporation.

Joanne G. Gough Notary Public, Hennepin County, Minnesota
My Commission Expires: May 13 1987

The foregoing instrument was acknowledged before me this 7 day of Dec, 1980, A.D. by Larry F. Cramblit, president, and by Lyle E. McLaughlin, secretary of Commonwealth Development Co., a Minnesota Corporation, on behalf of the corporation.



Charles D. Hepleman Notary Public, Anoka County, Minnesota
My Commission Expires: June 24, 1987

I hereby certify that I have surveyed and platted the property described in this plat as REISLING PARK NORTH and that this plat is a correct representation of said survey; that all monuments have been correctly placed in the ground as shown on the plat; that all distances are correctly shown on the plat in feet and hundredths of a foot; that the outside boundary lines are correctly designated on the plat; and that there are no wet lands or public highways to be designated on the plat other than as shown thereon.

John O. Oliver
John O. Oliver, Land Surveyor
Minnesota Registration No. 8194

The foregoing instrument was acknowledged before me this 2nd day of June, 1980, A.D. by John O. Oliver, Land Surveyor

Richard C. Felt Notary Public, Walt Lake County, Minnesota
My Commission Expires: Jan 26 1980

Annexed plat of REISLING PARK NORTH was approved by the Planning Commission of the City of Coon Rapids, Minnesota at a regular meeting thereof held this 20th day of March, 1980, A.D.

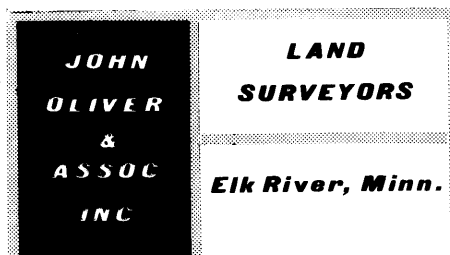
By: Anna M. Name, Chairman

Annexed plat of REISLING PARK NORTH was approved by the City Council of Coon Rapids, Minnesota at a regular meeting thereof held this 2nd day of December, 1980, A.D.

By: Daniel D. McParley, Mayor Attest: Betty Bellomo, Clerk

This plat has been checked and approved this 29th day of December, 1980, A.D.

Robert W. Arleson Anoka County Surveyor



NO DELINQUENT TAXES AND TRANSFER ENTRIES

Dec 29th -- 80

Charles R. Sefelove

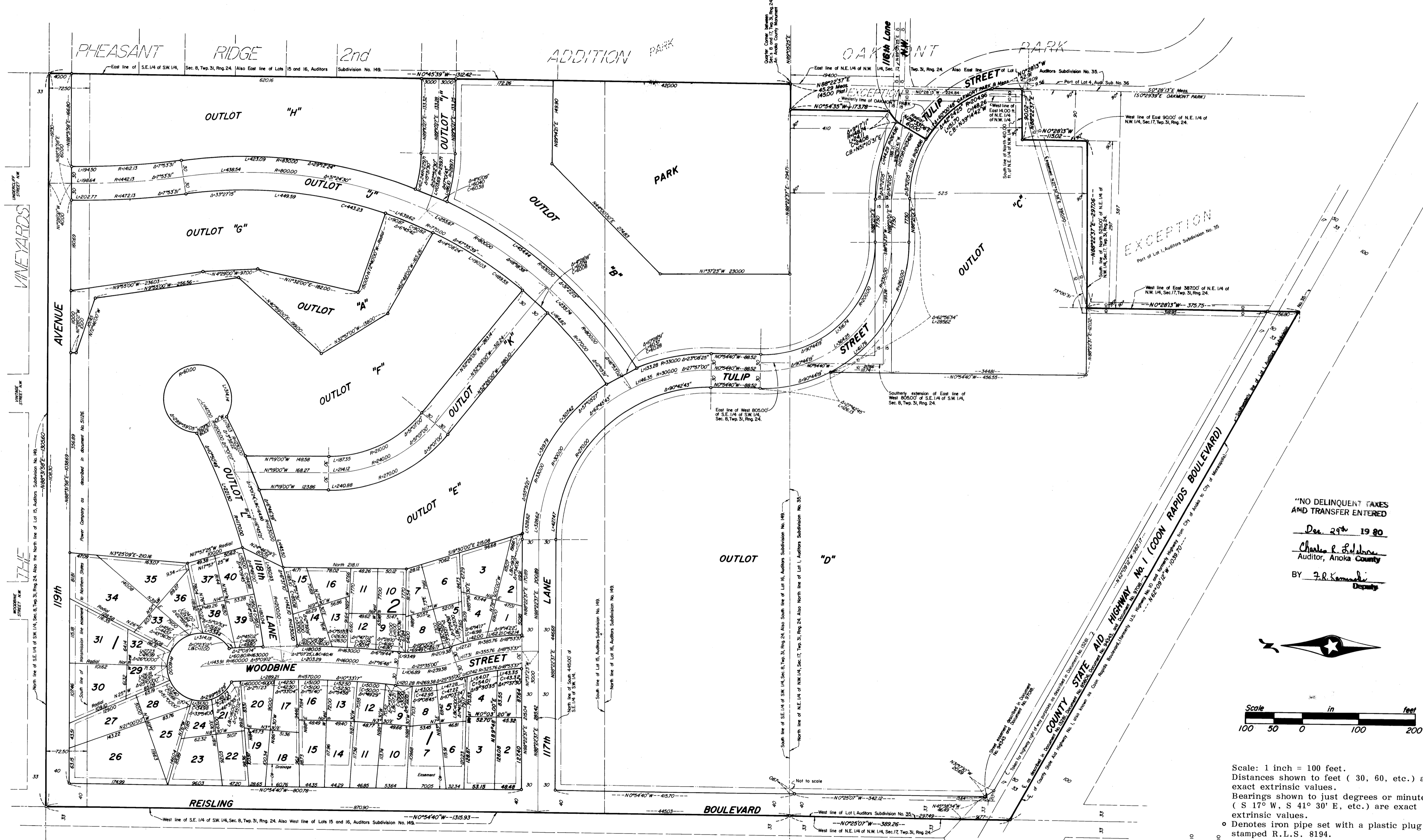
F.R. Kaminski

Office of Registrar of Titles
STATE OF MINNESOTA
COUNTY OF ANOKA
I hereby certify that this instrument was filed in this office on this day of Dec 1980.
114615
Charles R. Sefelove
Registrar of Titles

114615

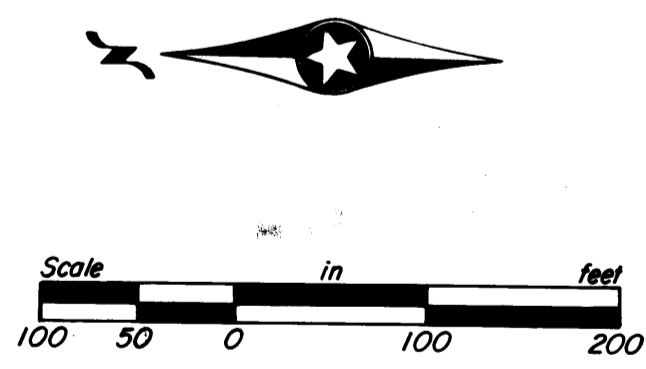
REISLING PARK NORTH

City of Coon Rapids, Anoka County, Minnesota



JOHN OLIVER & ASSOC. INC.
LAND SURVEYORS
 Elk River, Minn.

"NO DELINQUENT TAXES AND TRANSFER ENTERED"
 Dec 29th 1928
 Charles E. Robinson
 Auditor, Anoka County
 BY J.R. Kennedy
 Deputy



Scale: 1 inch = 100 feet.
 Distances shown to feet (30, 60, etc.) are exact extrinsic values.
 Bearings shown to just degrees or minutes (S 17° W, S 41° 30' E, etc.) are exact extrinsic values.
 ○ Denotes iron pipe set with a plastic plug stamped R.L.S. 8194.
 — Denotes drainage and utility easements.
 - - - Denotes utility easements only.
 Bearings are assumed.