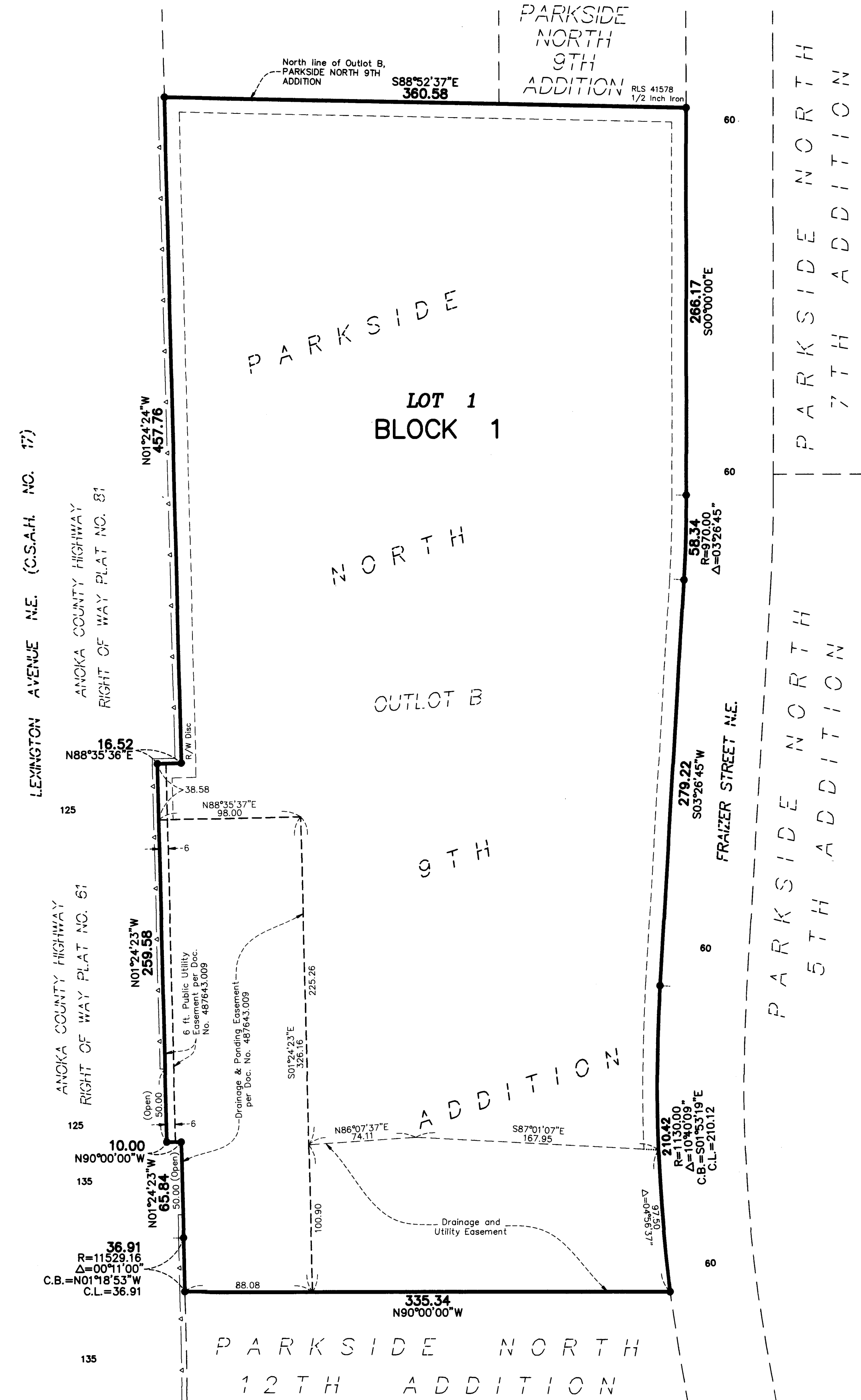


RENOVATION CHURCH 1ST ADDITION

CITY OF BLAINE
COUNTY OF ANOKA
SEC. 12, TWP. 31, RGE. 23



KNOW ALL PERSONS BY THESE PRESENTS: That Renovation Church, a Minnesota non-profit corporation, owner of the following described property:
 Outlot B, PARKSIDE NORTH 9TH ADDITION, Anoka County, Minnesota
 Has caused the same to be surveyed and platted as RENOVATION CHURCH 1ST ADDITION and does hereby dedicate to the public for public use the drainage and utility easements as shown on this plat.
 In witness whereof said Renovation Church, a Minnesota non-profit corporation, has caused these presents to be signed by its proper officers this 14th day of February, 2020

RENOVATION CHURCH
 Gerrit Plantage, Board Chair
 Barbara Mahr, Assistant Board Chair
 STATE OF MINN
 COUNTY OF ANOKA
 This instrument was acknowledged before me on February 14, 2020 by Gerrit Plantage, Board Chair of Renovation Church, a Minnesota non-profit corporation, on behalf of the corporation.

STATE OF MINN
 COUNTY OF ANOKA
 This instrument was acknowledged before me on February 14, 2020 by Barbara Mahr, Assistant Board Chair of Renovation Church, a Minnesota non-profit corporation, on behalf of the corporation.

I, Thomas R. Balluff do hereby certify that this plat was prepared by me or under my direct supervision; that I am a duly Licensed Land Surveyor in the State of Minnesota; that this plat is a correct representation of the boundary survey, that all mathematical data and labels are correctly designated on this plat; that all monuments depicted on this plat have been, or will be correctly set within one year; that all water boundaries and wet lands, as defined in Minnesota Statutes, Section 505.01, Subd. 3, as of the date of this certificate are shown and labeled on this plat; and all public ways are shown and labeled on this plat.
 Dated this 17th day of JANUARY, 2020

STATE OF Minnesota
 COUNTY OF Anoka
 This instrument was acknowledged before me on January 17, 2020 by Thomas R. Balluff.

CITY COUNCIL, CITY OF BLAINE, MINNESOTA
 This plat of RENOVATION CHURCH 1ST ADDITION was approved and accepted by the City Council of the City of Blaine, Minnesota at a regular meeting thereof held this 6th day of January, 2020 and said plat is in compliance with the provisions of Minnesota Statutes, Section 505.03, Subd. 2.

COUNTY SURVEYOR
 I hereby certify that in accordance with Minnesota Statutes, Section 505.021, Subd. 11, this plat has been reviewed and approved this 20th day of February, 2020

COUNTY AUDITOR/TREASURER
 Pursuant to Minnesota Statutes, Section 505.021, Subd. 9, taxes payable in the year 2020 on the land hereinbefore described have been paid. Also, pursuant to Minnesota Statutes, Section 272.12, there are no delinquent taxes and transfer entered this 20 day of February, 2020

COUNTY RECORDER/REGISTRAR OF TITLES
 County of Anoka, State of Minnesota
 I hereby certify that this plat of RENOVATION CHURCH 1ST ADDITION was filed in the office of the County Recorder/Registrar of Titles for public record on this 20 day of February, 2020 at 11:14 o'clock A.M. and was duly recorded as Document Number 571569.002

Barbara Mahr (Signed)
 Barbara Mahr, Assistant Board Chair

Lisa Karnowski (Signed)
 Lisa Karnowski (Printed)
 Notary Public, Anoka City, MN
 My commission expires January 31, 2023

Lisa Karnowski (Signed)
 Lisa Karnowski (Printed)
 Notary Public, Anoka City, MN
 My commission expires January 31, 2023

Thomas R. Balluff
 Thomas R. Balluff, Licensed Land Surveyor
 Minnesota License No. 40361

Cynthia J. Morice (Signed)
 Cynthia J. Morice (Printed)
 Notary Public, Hennepin County, Minnesota
 My commission expires January 31, 2020

John Eger Mayor
Carl McJannet Clerk

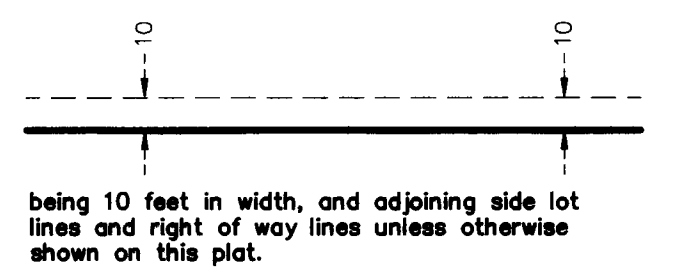
Charles F. Gitzen
 Charles F. Gitzen
 Anoka County Surveyor

Jonell M. Sawyer
 Property Tax Administrator

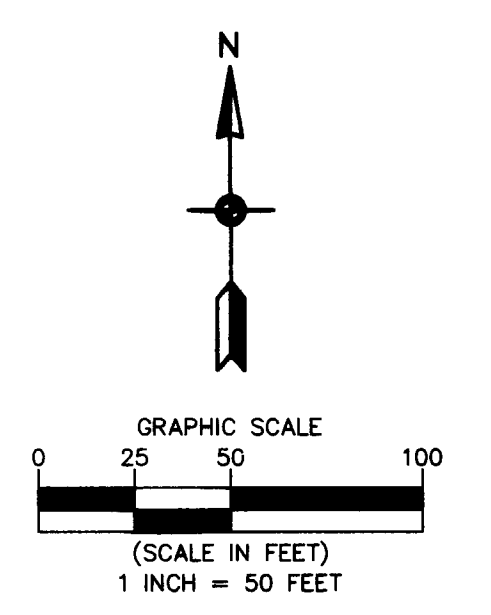
Marie Earnest Deputy

Jonell M. Sawyer
 County Recorder/Registrar of Titles
Marie Earnest Deputy

DRAINAGE AND UTILITY EASEMENTS ARE SHOWN THUS: (NOT TO SCALE)



• Denotes Found 5/8 inch by 14 inch rebar, marked with license number 40361, unless otherwise noted
 —▲— Denotes Right of Access dedicated to Anoka County per the Plat of PARKSIDE NORTH
 For the purposes of this plat, the North line of Outlot B, PARKSIDE NORTH 9TH ADDITION is assumed to have a bearing of South 88 degrees 52 minutes 37 seconds East.



Carlson McCain
 ENVIRONMENTAL · ENGINEERING · SURVEYING

\$56