

REVERE PARK

KNOW ALL PERSONS BY THESE PRESENTS: That Pulte Homes of Minnesota LLC, a Minnesota limited liability company, owner of the following described property:

Outlot E, PARKSIDE NORTH 2ND ADDITION, Anoka County, Minnesota

AND

Outlot F, PARKSIDE NORTH 5TH ADDITION, Anoka County, Minnesota

Has caused the same to be surveyed and platted as REVERE PARK and does hereby dedicate to the public for public use the drainage and utility easements as shown on this plat.

In witness whereof said Pulte Homes of Minnesota LLC, a Minnesota limited liability company, has caused these presents to be signed by its proper officer this 26 day of MARCH, 2021.

Signed: Pulte Homes of Minnesota LLC

By: [Signature] (Signature)
JAMIE THARP Chief Manager

STATE OF MINNESOTA

COUNTY OF HENNEPIN

This instrument was acknowledged before me this 26 day of MARCH, 2021 by JAMIE THARP Chief Manager of Pulte Homes of Minnesota LLC, a Minnesota limited liability company, on behalf of the company.

[Signature]
(Signature)

JENNIFER MUJWID-HERRMANN
Printed Name

Notary Public, DAKOTA County, Minnesota

My Commission Expires JANUARY 31, 2026

I Peter D. Goers do hereby certify that this plat was prepared by me or under my direct supervision; that I am a duly Licensed Land Surveyor in the State of Minnesota; that this plat is a correct representation of the boundary survey; that all mathematical data and labels are correctly designated on this plat; that all monuments depicted on this plat have been, or will be correctly set within one year; that all water boundaries and wet lands, as defined in Minnesota Statutes, Section 505.01, Subd. 3, as of the date of this certificate are shown and labeled on this plat; and all public ways are shown and labeled on this plat.

Dated this 25TH day of MARCH, 2021.

[Signature]
Peter D. Goers, Licensed Land Surveyor
Minnesota License No. 44110

STATE OF MINNESOTA

COUNTY OF HENNEPIN

This instrument was acknowledged before me this 25th day of March, 2021 by Peter D. Goers.

[Signature]
(Signature)

Daniel P. Ekrem
(Printed Name)

Notary Public, Dakota County, Minnesota

My Commission Expires January 31, 2024

City Council, City of Blaine, Minnesota

This plat of REVERE PARK was approved and accepted by the City Council of the City of Blaine, Minnesota at a regular meeting thereof held this 1st day of March, 2021, and said plat is in compliance with the provisions of Minnesota Statutes, Section 505.03, Subd. 2.

City Council, City of Blaine, Minnesota

By: [Signature], Mayor By: [Signature], Clerk

County Surveyor

I hereby certify that in accordance with Minnesota Statutes, Section 505.021, Subd. 11, this plat has been reviewed and approved this 8TH day of April, 2021.

By: [Signature]
Charles F. Gitzen
Anoka County Surveyor

County Auditor/Treasurer

Pursuant to Minnesota Statutes, Section 505.021, Subd. 9, taxes payable in the year 2021 on the land hereinbefore described have been paid. Also, pursuant to Minnesota Statutes, Section 272.12, there are no delinquent taxes and transfer entered this 20 day of April, 2021.

[Signature]
Pamela J LeBlanc
Property Tax Administrator

By: [Signature], Deputy

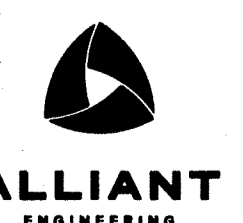
County Recorder/Registrar of Titles
County of Anoka, State of Minnesota

I hereby certify that this plat of REVERE PARK was filed in the office of the County Recorder/Registrar of Titles for public record on this 20 day of April, 2021, at 2:14 o'clock P.M. and was duly recorded as Document Number 587194.002.

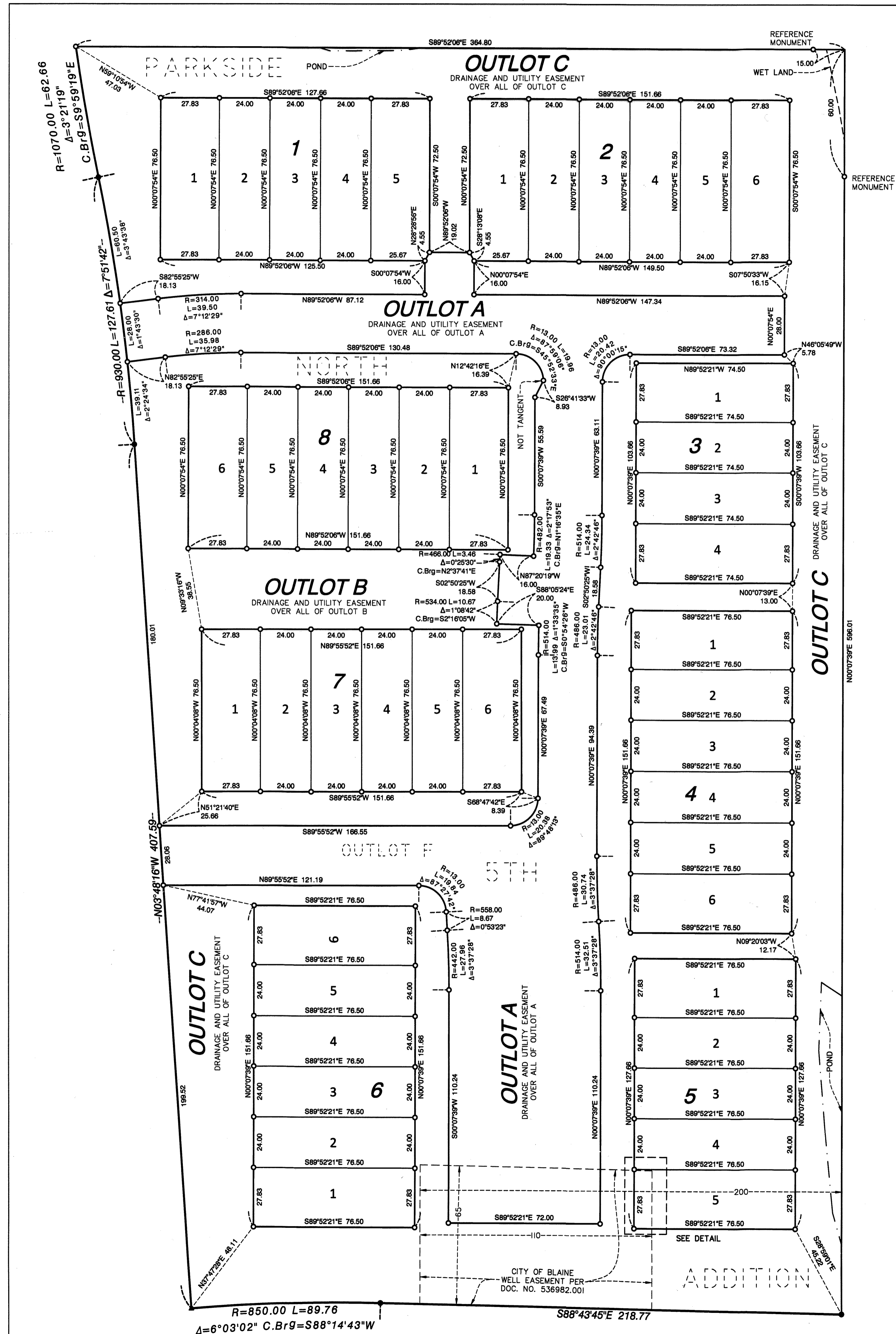
[Signature]
Pamela J LeBlanc
County Recorder/Registrar of Titles

By: [Signature], Deputy

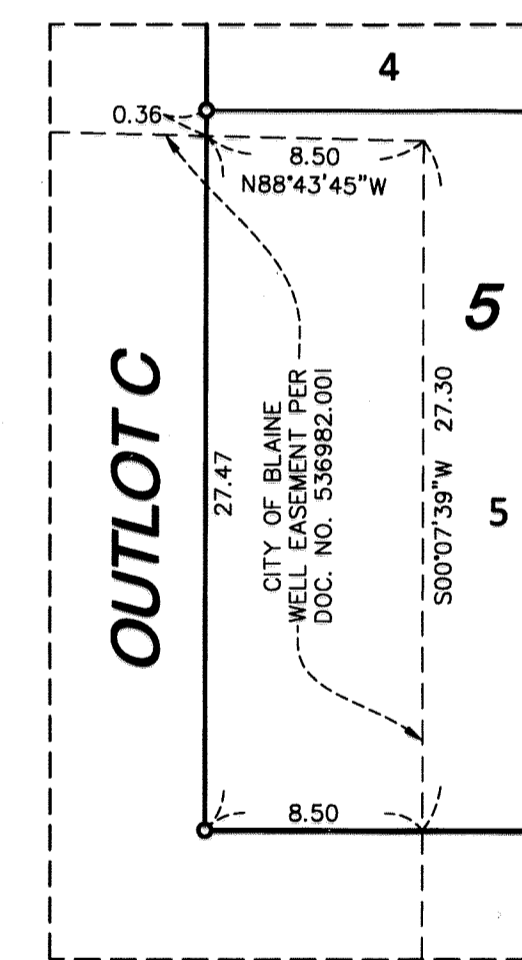
\$55-



REVERE PARK INSET



DETAIL NOT TO SCALE



- Denotes monument found 1/2 inch iron pipe
- ▲ Denotes monument found nail
- Denotes 1/2 inch x 18 inch iron monument set marked by license no. 44110
- EDGE OF WET LAND
- - - EDGE OF WATER

