

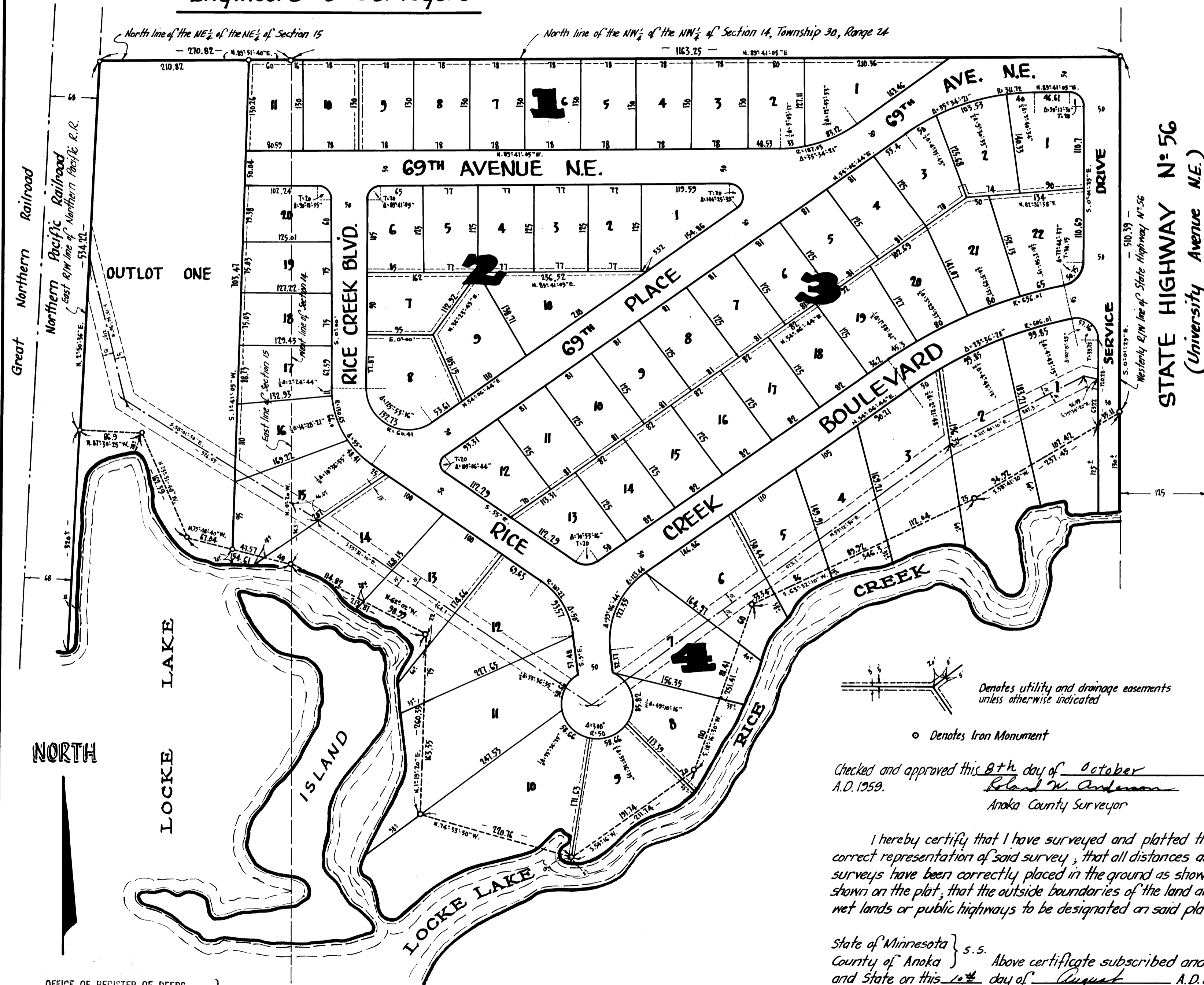
# RICE CREEK PLAZA NORTH ADDITION

CITY of FRIDLEY - COUNTY of ANOKA

Suburban

**ENGINEERING, INC.**  
Engineers & Surveyors

Bearings are assumed Scale 1"=100' July, 1959



KNOW ALL MEN BY THESE PRESENTS: that Rice Creek Plaza, Inc., a Minnesota Corporation, owners and proprietors and C.A. Nelson Farms, Inc., a Minnesota Corporation, mortgagee of the following described property, situate in the State of Minnesota and County of Anoka to-wit: - That part of the NW 1/4 of the NW 1/4 of Section 14, Township 30, Range 24 Anoka County, Minnesota lying northerly of Rice Creek and Locke Lake, and lying westerly of the westerly right of way line of State Highway N° 56, also known as University Avenue N.E., and that part of the NE 1/4 of the NE 1/4 of Section 15, Township 30, Range 24, Anoka County, Minnesota, also known as part of Lot 2, Revised Auditors Subdivision N° 23, lying easterly of the East right of way line of Northern Pacific Railroad and lying northerly of Locke Lake, have caused the same to be surveyed and platted as RICE CREEK PLAZA NORTH ADDITION, and do hereby donate and dedicate to the public for public use forever the Avenue, Drive, Place and Boulevard as shown on the annexed plat, subject to the Utility and Drainage Easements as shown on the annexed plat for use of municipality or other public utilities. In witness whereof said Rice Creek Plaza, Inc., has caused these presents to be signed by its proper officers, and its corporate seal, to be hereunto affixed this 2<sup>nd</sup> day of October A.D. 1959; also in witness whereof said C.A. Nelson Farms, Inc., has caused these presents to be signed by its proper officers, and its corporate seal, to be hereunto affixed this 21<sup>st</sup> day of September A.D. 1959.

In Presence of

Supreme Michawic } As to Irving B. Hafner and Ernest Madsen  
Edlven } Secretary

John L. Nelson } As to Theo. L. Nelson and Hattie C.A. Holcombe  
Norma A. Knudsen } Secretary

RICE CREEK PLAZA, INC. \_\_\_\_\_ President  
 \_\_\_\_\_ Secretary

C.A. NELSON FARMS, INC. \_\_\_\_\_ President  
 \_\_\_\_\_ Secretary

State of Minnesota } s.s. On this 2<sup>nd</sup> day of October A.D. 1959, before me, a Notary Public, within County of Anoka } and for said County and State personally appeared Irving B. Hafner and Ernest Madsen, to me personally known who, being each by me duly sworn did say that they are respectively the President and Secretary of Rice Creek Plaza, Inc., the corporation named in the foregoing instrument, and that the seal affixed to said instrument is the corporate seal of said corporation, and that said instrument was signed and sealed in behalf of said corporation by authority of its Board of Directors and said Irving B. Hafner and Ernest Madsen acknowledged said instrument to be the free act and deed of said Corporation.

Supreme Michawic  
 Notary Public, Anoka County, Minnesota  
 My Commission Expires \_\_\_\_\_

State of Minnesota } s.s. On this 21<sup>st</sup> day of September A.D. 1959, before me, a Notary Public, County of Anoka } within and for said County and State personally appeared Theo. L. Nelson and Hattie C.A. Holcombe, to me personally known who, being each by me duly sworn did say that they are respectively the President and Secretary of C.A. Nelson Farms, Inc., the corporation named in the foregoing instrument, and that the seal affixed to said instrument is the corporate seal of said corporation, and that said instrument was signed and sealed in behalf of said corporation by authority of its Board of Directors and said Theo. L. Nelson and Hattie C.A. Holcombe acknowledged said instrument to be the free act and deed of said Corporation.

John L. Nelson  
 Notary Public, Anoka County, Minnesota  
 My Commission Expires \_\_\_\_\_

John B. Nelson  
 Notary Public, Hennepin County, Minn.  
 My Commission Expires April 6, 1955.

Checked and approved this 2<sup>th</sup> day of October A.D. 1959.  
Robert W. Anderson  
 Anoka County Surveyor

Denotes utility and drainage easements unless otherwise indicated

o Denotes Iron Monument

I hereby certify that I have surveyed and platted the property described on this plat as RICE CREEK PLAZA NORTH ADDITION, that this plat is a correct representation of said survey, that all distances are correctly shown on said plat in feet and decimals of a foot, that the monuments for guidance of future surveys have been correctly placed in the ground as shown on said plat, that the topography of the land is correctly shown on the plat, that the outside boundaries of the land are correctly designated on said plat, and that there are no wet lands or public highways to be designated on said plat other than as shown thereon.

E. A. Rathbun  
 Surveyor - Minnesota Registration N° 3795

State of Minnesota } s.s. Above certificate subscribed and sworn to before me, a Notary Public within and for said County and State on this 10<sup>th</sup> day of August A.D. 1959.

Supreme Michawic  
 Notary Public, Anoka County, Minnesota  
 My Commission Expires \_\_\_\_\_

We hereby certify, that the City Council of the City of Fridley, Anoka County, Minnesota, duly accepted and approved the annexed plat of RICE CREEK PLAZA NORTH ADDITION, at a regular meeting thereof held this 10 day of September A.D. 1959.

HEREBY CERTIFY THAT TAXES FOR THE YEAR 1958 ON THE LANDS DESCRIBED WITHIN ARE PAID

Mattie D. Bauers  
 County Treasurer

Walter D. Bauers  
 County Treasurer

Edna C. Brunson  
 Clerk

CITY of FRIDLEY, ANOKA COUNTY, MINN.

OFFICE OF REGISTER OF DEEDS  
 STATE OF MINNESOTA, COUNTY OF ANOKA } ss

I hereby certify that the within instrument was filed in this office for record on the 3<sup>rd</sup> day of Oct 1959, A.D. 1959, at 3:10 o'clock P.M., and was duly recorded in book "S.S. of Plata" page 17.

Gertrude Schinner  
 Register of Deeds  
 By Margaret Russell, Deputy

TAXES PAID  
 This 10<sup>th</sup> day of Oct 1959  
Kenneth G. Campbell  
 Anoka County, Minn.  
Robert O. Peterson Denote