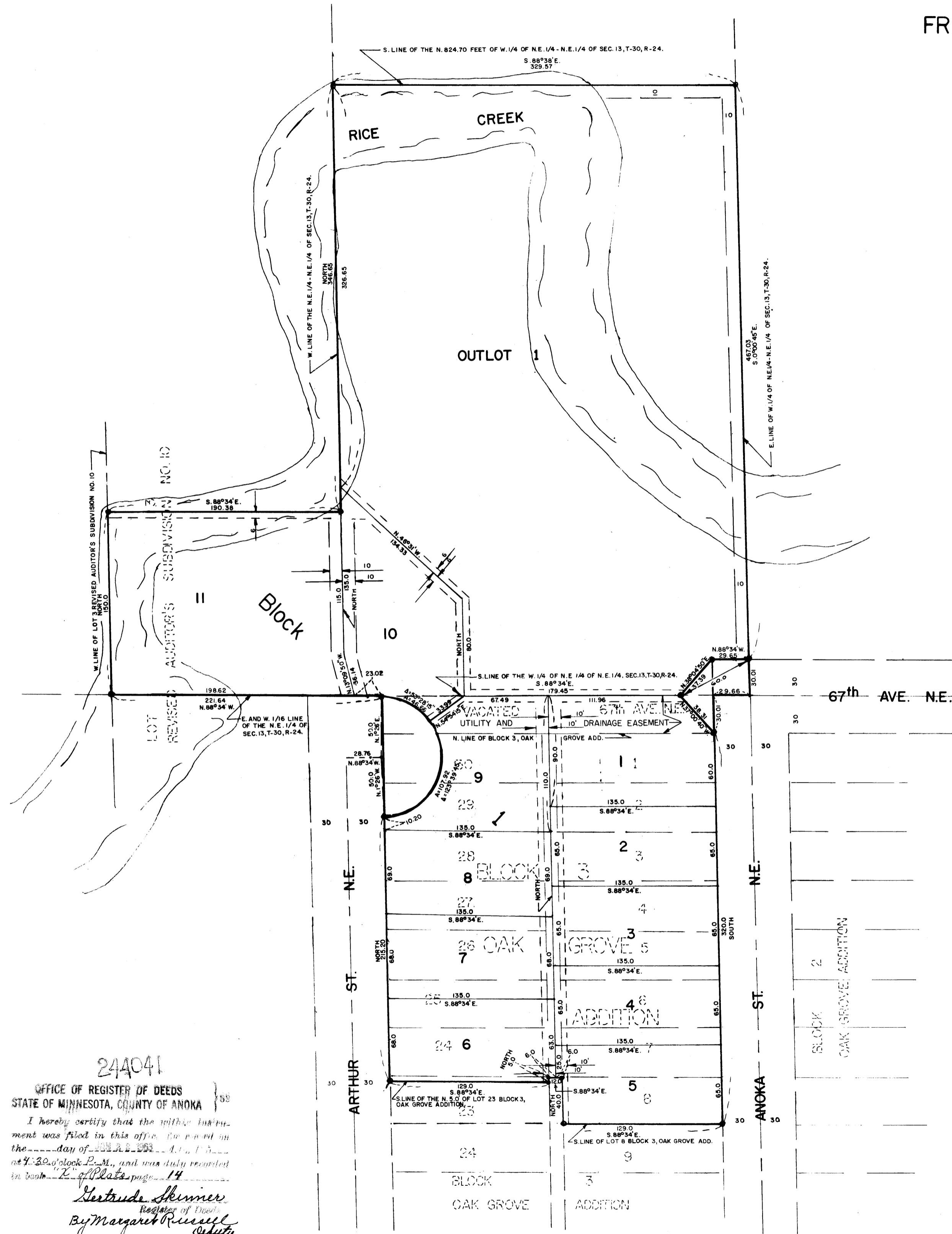


Original

RICE CREEK SCHOOL ADDITION

FRIDLEY



Know all men by these presents: That we, Floyd F. Foslien and Alice V. Foslien, his wife, owners and proprietors of the following described property situate in the County of Anoka, State of Minnesota to-wit: Lots 1 thru 8, inclusive, lots 24 thru 30, inclusive, and the North 5.0 feet of lot 23 all in Block 3, Oak Grove Addition to Fridley Park, according to the plat thereof on file and of record in the office of the Register of Deeds, Anoka County, Minnesota. Also the South 150.0 feet of that part of lot 3 Revised Auditor's Subdivision Number 10, Anoka County, Minnesota, lying North of the East and West 1/16 line of the Northeast 1/4 of Section 13, Township 30, Range 24. Also that part of the West 1/4 of the Northeast 1/4 of the Northeast 1/4 of Section 13, Township 30, Range 24 lying South of the North 824.70 feet thereof. Also that part of vacated 67th Avenue Northeast lying between the East and West lines of Block 3, Oak Grove Addition to Fridley Park extended North, according to the plat thereof on file and of record in the office of the Register of Deeds, Anoka County, Minnesota. Also that portion of the 12.0 foot alley extending from 66th Avenue N.E. to 67th Avenue N.E. and lying between Arthur Street N.E. and Anka Street N.E., and located in Block 3, Oak Grove Addition specifically described as follows: that portion extending North from the South line extended Easterly of lot 24, Block 3, Oak Grove Addition, to the North line of Block 3, Oak Grove Addition, according to the plat thereon file and of record in the office of the Register of Deeds, Anoka County, Minnesota. Have caused the same to be surveyed and platted as RICE CREEK SCHOOL ADDITION and do hereby donate and dedicate to the public for public use forever the Avenue and Street as shown on the annexed plat. Also subject to utility easements as shown on the annexed plat. In witness whereof we have hereunto set our hands and seals

In the presence of
 Andrew Hanson and Jane P. Mueckert as to Floyd F. Foslien
 Andrew Hanson and Jane P. Mueckert as to Alice V. Foslien
 This 3rd day of January A.D. 1963
 Alice V. Foslien

State of Minnesota) S.S.
 County of Hennepin) S.S.
 On this 3rd day of January A.D. 1963, before me, a Notary Public, within and for said County and State, personally appeared Floyd F. Foslien and Alice V. Foslien, his wife, to me known to be the persons in and who executed the foregoing instrument and they affirm and acknowledge that they executed the same as their own free act and deed.
 Andrew Hanson
 Notary Public, Hennepin County, Minnesota
 My Commission Expires [unclear]

I hereby certify that I have surveyed and platted the land described in the dedication on this plat as RICE CREEK SCHOOL ADDITION, that this plat is a correct representation of said survey, that all distances are correctly shown on said plat in figures denoting feet and decimals of a foot, that the monuments for the guidance of future surveys have been correctly placed in the ground as shown on said plat, that the outside boundaries of the land are correctly designated on said plat, that there are no wet lands or public highways to be designated on said plat other than are shown thereon.
 F.C. Jackson, Land Surveyor, Minn. Reg. No. 3600

State of Minnesota) S.S.
 County of Hennepin) S.S.
 Above certificate subscribed and sworn to before me, a Notary Public, within and for said County and State on
 This 9th day of Oct. A.D. 1962
 Ronald C. Jackson
 Notary Public, Hennepin County, Minnesota
 My Commission Expires March 27, 1968

We hereby certify that the City Council of the City of Fridley, Anoka County, Minnesota, duly accepted and approved the annexed plat of RICE CREEK SCHOOL ADDITION at a regular meeting thereof held this 7th day of January A.D. 1963.
 City of Fridley, Anoka County, Minnesota
 by William J. Nee its Mayor
 by Martin C. Brewster its Clerk

Checked and approved this 23rd day of January A.D. 1963.
 Robert W. Anderson
 County Surveyor, Anoka County, Minnesota

SCALE: 1" = 60'
 • DENOTES IRON MONUMENT
 BEARINGS ARE ASSUMED

DASHED LINES DENOTES UTILITY AND DRAINAGE EASEMENTS BEING 5' ON EACH SIDE OF LOT LINES UNLESS OTHERWISE NOTED

NOTE: VACATED 67TH AVENUE N.E. IS RETAINED FOR UTILITY AND DRAINAGE EASEMENTS.

F.C. JACKSON
 LAND SURVEYOR
 MINN. REG. NO. 3600

I HEREBY CERTIFY THAT TAXES FOR THE YEAR 1962 ON THE LANDS DESCRIBED WITHIN ARE PAID
 Robert A. Peterson
 County Treasurer
 by Peterson, Deputy

TAXES PAID
 This 23rd day of Jan 1963
 Kenneth W. Campbell
 Auditor, Anoka County, Minn.
 by Wayne A. Headlee Deputy

Office of REGISTRAR OF TITLES
 STATE OF MINNESOTA
 COUNTY OF ANOKA
 I hereby certify that the within instrument was filed in this office on the 23rd day of JAN 23 1963 A.D. 1963 at 4:30 o'clock P.M.
 Gertrude Skinner Registrar of Titles
 by Colleen Rottcher Deputy REGISTRAR OF TITLES

HEREBY CERTIFY THAT TAXES FOR THE YEAR ON THE LANDS DESCRIBED WITHIN ARE PAID
 County Treasurer

244041
 OFFICE OF REGISTER OF DEEDS
 STATE OF MINNESOTA, COUNTY OF ANOKA
 I hereby certify that the within instrument was filed in this office for record on the 23rd day of January A.D. 1963 at 4:30 o'clock P.M., and was duly recorded in Book 26 of Plate page 14
 Gertrude Skinner
 Register of Deeds
 By Margaret Rice, Deputy