

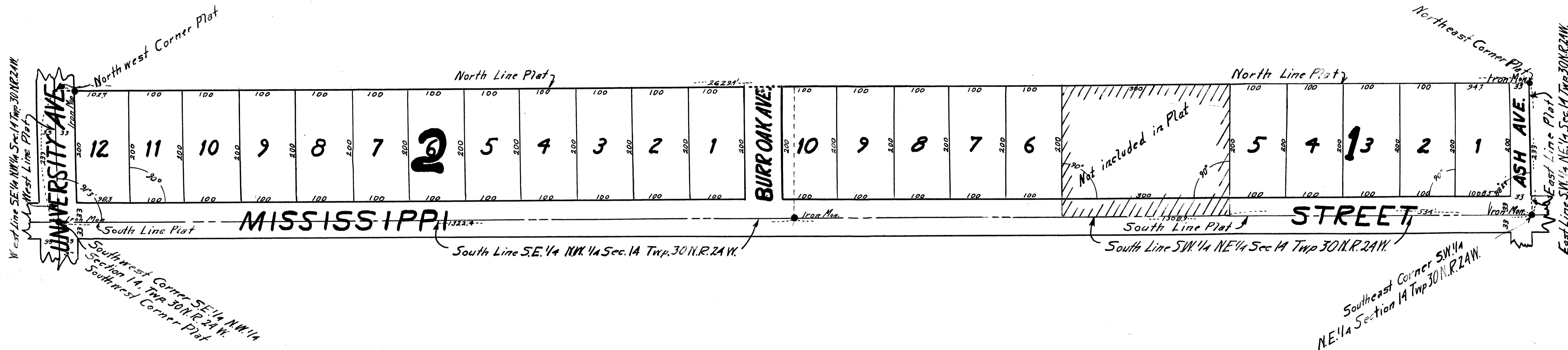
RICE CREEK TERRACE PLAT 1

ANOKA COUNTY, MINNESOTA

Scale One Inch = 100 Feet

OFFICE OF REGISTER OF DEEDS,
STATE OF MINNESOTA, COUNTY OF ANOKA } ss.
I hereby certify that the within instrument was filed in this office for record on the 2 day of Feb. A. D. 1941 at 11:32 a.m., and was duly recorded in book 44 page 7.

Eva Brandell
Register of Deeds



KNOW ALL MEN BY THESE PRESENTS: That we, C.A. Nelson Farms Incorporated, a Corporation existing under the Laws of the State of Minnesota, Owners and Proprietors of the following described property to wit: The south 233 feet of the Southeast one fourth of the Northwest one fourth (SE 1/4 NW 1/4) and of the South west one fourth of the Northeast one fourth (SW 1/4 NE 1/4) of Section fourteen (14) Township Thirty North (T.30N.) Range Twenty four West (R.24W.) of the fourth Principal Meridian (4th PM) Anoka County, Minnesota, excepting therefrom the following, beginning at a point on the South Line 534 feet West of the Southeast Corner of the SW 1/4 of the NE 1/4 said Section 14, Thence North at 90° 233 feet, Thence West at 90° 300 feet; Thence South at 90° 233 feet; to said South Line, Thence East 300 feet to the Point of beginning and except roads have caused the same to be Surveyed and Platted as Rice Creek Terrace Plat 1 Anoka County, Minnesota and do hereby dedicate and donate to the Public use forever the Streets and Avenues as shown on the annexed Plat. In witness whereof we have hereunto set our hands and Seals on this 12th day of Feb. 1941 A.D.

C.A. Nelson Farms, Incorporated, by Mathilde Johnson its Pres.
In Presence of John H. Denton Harvey G. Cartright its Sec.

STATE OF MINNESOTA } ss.
COUNTY OF HENNEPIN }
On this 12th day of Feb. 1941 A.D. before me, a Notary Public in and for said County and State, personally appeared Mathilde Johnson and John H. Denton to me personally known, who being each by me duly sworn, they did say that they are respectively President and Secretary of the Corporation named in the foregoing instrument and that the Seal affixed to said instrument is the Corporate Seal of said Corporation and that said instrument was signed and sealed in behalf of said Corporation by authority of its Board of Directors and said Mathilde Johnson and John H. Denton acknowledged said instrument to be the free act and deed of said Corporation.

Notary Public, Hennepin County, Minnesota, Hudson G. Johnson
My Commission expires _____

I hereby certify that, I have Surveyed and Platted the Land described in the dedication on this sheet as 'Rice Creek Terrace Plat 1'; That this Plat is a correct representation of said Survey; That all distances are correctly shown on said Plat in figures denoting feet and decimals of a foot; That the Monuments for the guidance of future Surveys have been correctly placed in the ground as shown on said Plat; That the topography of the Land is correctly shown on said Plat; That the outside boundaries of the Land are correctly designated on said Plat; and that there are no wet Lands or Public Highways to be designated on said Plat other than are thereon shown.

Registered Land Surveyor Minnesota Number 1983
Signed Harvey G. Cartright

STATE OF MINNESOTA } ss.
COUNTY OF ANOKA }
Above Certificate subscribed and sworn to, before me, a Notary Public in and for said County and State, on this 30th day of February 1941 A.D. Lucretia J. Latta
Notary Public, Anoka County, Minnesota
My Commission expires April 21st 1944

This Plat was approved and accepted by the Honorable Board of County Commissioners, of the County of Anoka, State of Minnesota, at a regular meeting held this 11th day of Feb 1941 A.D.
Chairman Board of County Commissioners, Anoka County Carroll Brandt
County Auditor, Anoka County E.A. Carlson
By Wm. J. Sam Deputy

Oliver S. Chamberlain
ATTORNEY AT LAW
ANOKA, MINN.

TAXES PAID
This Plat was filed Feb. 42
E.A. Carlson
By Wm. J. Sam Deputy
1941

Created by D. Bowers