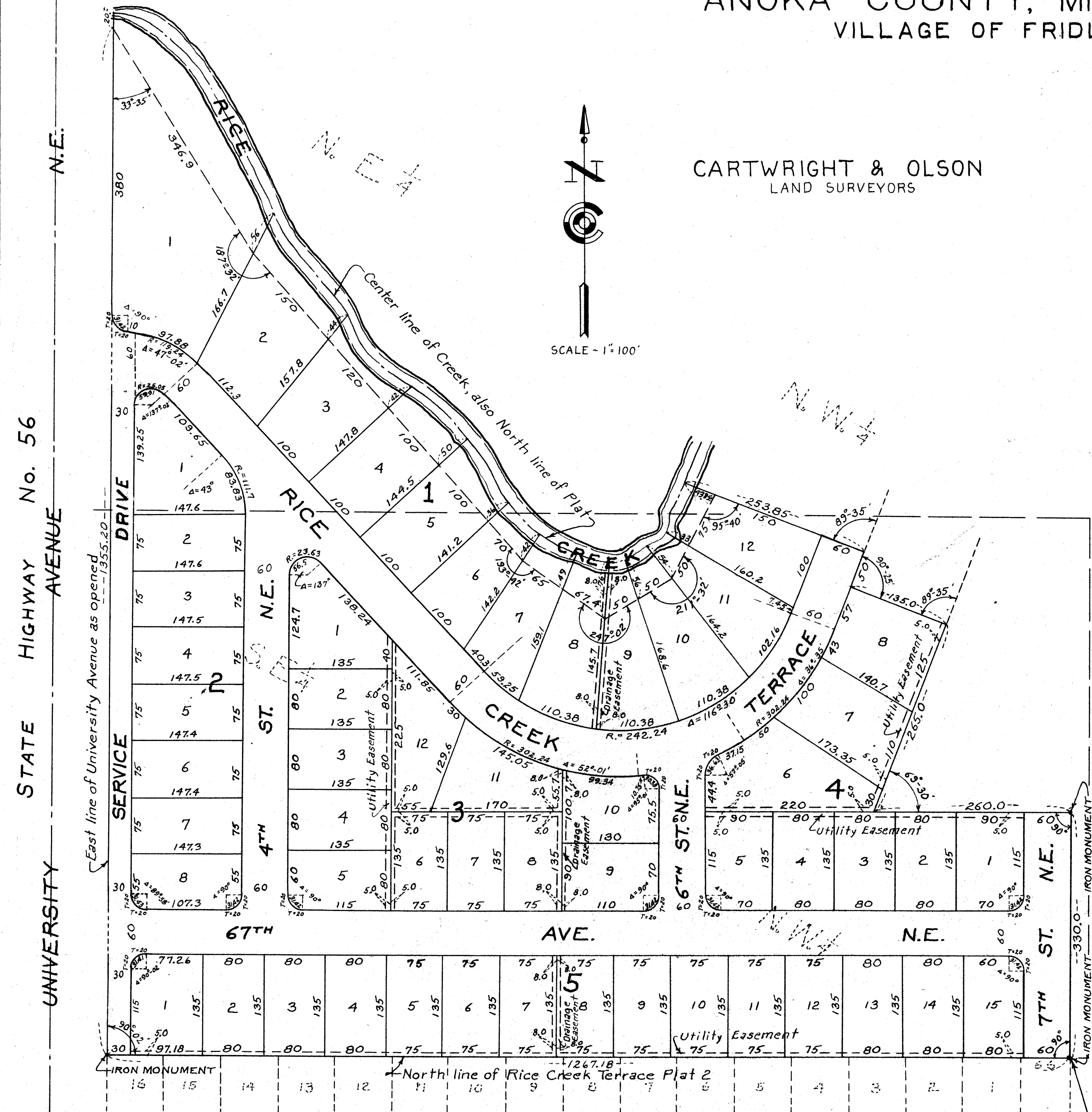


RICE CREEK TERRACE PLAT 3

ANOKA COUNTY, MINNESOTA
VILLAGE OF FRIDLEY

CARTWRIGHT & OLSON
LAND SURVEYORS



Know all men by these presents: that we, Rice Creek Developers, Inc., a Minnesota Corporation, owners and proprietors and C. A. Nelson Farms, Inc., a Minnesota Corporation, Mortgagee of the following described property situate in the County of Anoka, State of Minnesota to wit; that part of the North 1/2 of Section 14, Township 30, Range 24, Anoka County, Minnesota, lying East of the East line of University Avenue, as the same is now laid out and constructed, lying South of the centerline of Rice Creek, lying North of the North line of Rice Creek Terrace Plat 2, according to the Plat thereof on file and of record in the Office of the Register of Deeds within and for Anoka County, Minnesota and lying West of the following described line, commencing at a point on the North line of said Rice Creek Terrace Plat 2 at the Northwest corner of Lot 6, Block 1; thence North at right angles with the North line of said Rice Creek Terrace Plat 2 a distance of 330.0 feet; thence West at right angles a distance of 260.0 feet; thence to the right deflecting angle 110° 30' a distance of 265.0 feet; thence to the left deflection angle 89° 35' a distance of 135.0 feet; thence to the right deflection angle 89° 35' a distance of 50.0 feet; thence to the left 89° 35' a distance of 253.85 feet more or less to the centerline of Rice Creek, have caused the same to be surveyed and platted as RICE CREEK TERRACE PLAT 3, and do hereby donate and dedicate to the public for public use forever the Drive, Terrace, Avenue and Streets as shown on the annexed plat; also subject to utility and drainage easements as shown on the annexed plat. In witness whereof we have hereunto set our hands and seals on this 2nd day of AUGUST A.D. 1954

In the presence of
James Forsberg and Grace H. Smith As to Harvey H. Peterson
James Forsberg and Grace H. Smith As to Wyman Smith
John D. Nelson and Patricia Gronberg As to Theo. L. Nelson
John D. Nelson and Patricia Gronberg As to Raymond H. Nelson

Rice Creek Developers, Inc.
 Its President Harvey H. Peterson
 Its Secretary Wyman Smith
 C. A. Nelson Farms, Inc.
 Its President Theo. L. Nelson
 Its Treasurer Raymond H. Nelson

STATE OF MINNESOTA } s.s.
 COUNTY OF HENNEPIN } On this 2nd day of AUGUST A.D. 1954, before me, a Notary Public, within and for said County and State personally appeared Harvey H. Peterson and Wyman Smith, to me personally known, who, being each by me duly sworn did say that they are respectively the President and the Secretary of Rice Creek Developers, Inc., the Corporation named in the foregoing instrument, and that the seal affixed to said instrument is the corporate seal of said Corporation, and that said instrument was signed in behalf of said Corporation by authority of its Board of Directors and said Harvey H. Peterson and Wyman Smith acknowledged said instrument to be the free act and deed of said Corporation.

Thomas G. Forsberg
 Notary Public, Hennepin County, Minnesota
 My Commission Expires April 6, 1958

STATE OF MINNESOTA } s.s.
 COUNTY OF HENNEPIN } On this 12th day of August A.D. 1954, before me, a Notary Public, within and for said County and State personally appeared Theo. L. Nelson and Raymond H. Nelson, to me personally known, who, being each by me duly sworn did say that they are respectively the President and the Treasurer of C. A. Nelson Farms, Inc., the Corporation named in the foregoing instrument, and that the seal affixed to said instrument is the corporate seal of said Corporation, and that said instrument was signed and sealed in behalf of said Corporation by authority of its Board of Directors and said Theo. L. Nelson and Raymond H. Nelson acknowledged said instrument to be the free act and deed of said Corporation.

John D. Nelson
 Notary Public, Hennepin County, Minnesota
 My Commission Expires April 6, 1958

I hereby certify that I have surveyed and platted the property described on this plat as RICE CREEK TERRACE PLAT 3; that this plat is a correct representation of said survey; that all distances are correctly shown on said plat in feet and decimals of a foot; that the monuments for guidance of future surveys have been correctly placed in the ground as shown on said plat; that the topography of the land is correctly shown on plat; that the outside boundaries of the land are correctly designated on said plat; and that there are no wet lands or public highways to be designated on said plat other than are shown thereon.

James C. Cartwright
 Registered Land Surveyor, Minnesota Registration No. 1983

STATE OF MINNESOTA } s.s.
 COUNTY OF HENNEPIN } Above certificate subscribed and sworn to before me, a Notary Public within and for said County and State on this 9th day of August A.D. 1954

Clara Mae Dickey
 Notary Public, Hennepin County, Minnesota
 My Commission Expires April 11, 1958

We hereby certify that the Village Council of the Village of Fridley, Anoka County, Minnesota, duly accepted and approved the annexed plat of RICE CREEK TERRACE PLAT 3, at a regular meeting thereof held this 2nd day of AUGUST A.D. 1954

By Robert S. Hughes its Mayor
 By Eine Dnadsen its ~~CLERK~~ **MANAGER**

158065
 OFFICE OF REGISTER OF DEEDS,
 STATE OF MINNESOTA, COUNTY OF ANOKA
 I hereby certify that the within instrument was filed in this office for record on the 18th day of August, A. D. 1954 at 3 o'clock P.M. and was duly recorded in book J. E. 1815, page 19
Genevieve Peterson
 Register of Deeds

TAXES PAID
 This 18 day of Aug 1954
James H. Campbell
 Auditor, Anoka County, Minn.
Carl Cartwright, Surveyor

HEREBY CERTIFY THAT TAXES FOR THE YEAR 1953 ON THE LANDS DESCRIBED WITHIN ARE PAID
Shatter & Sowers
 County Treasurer