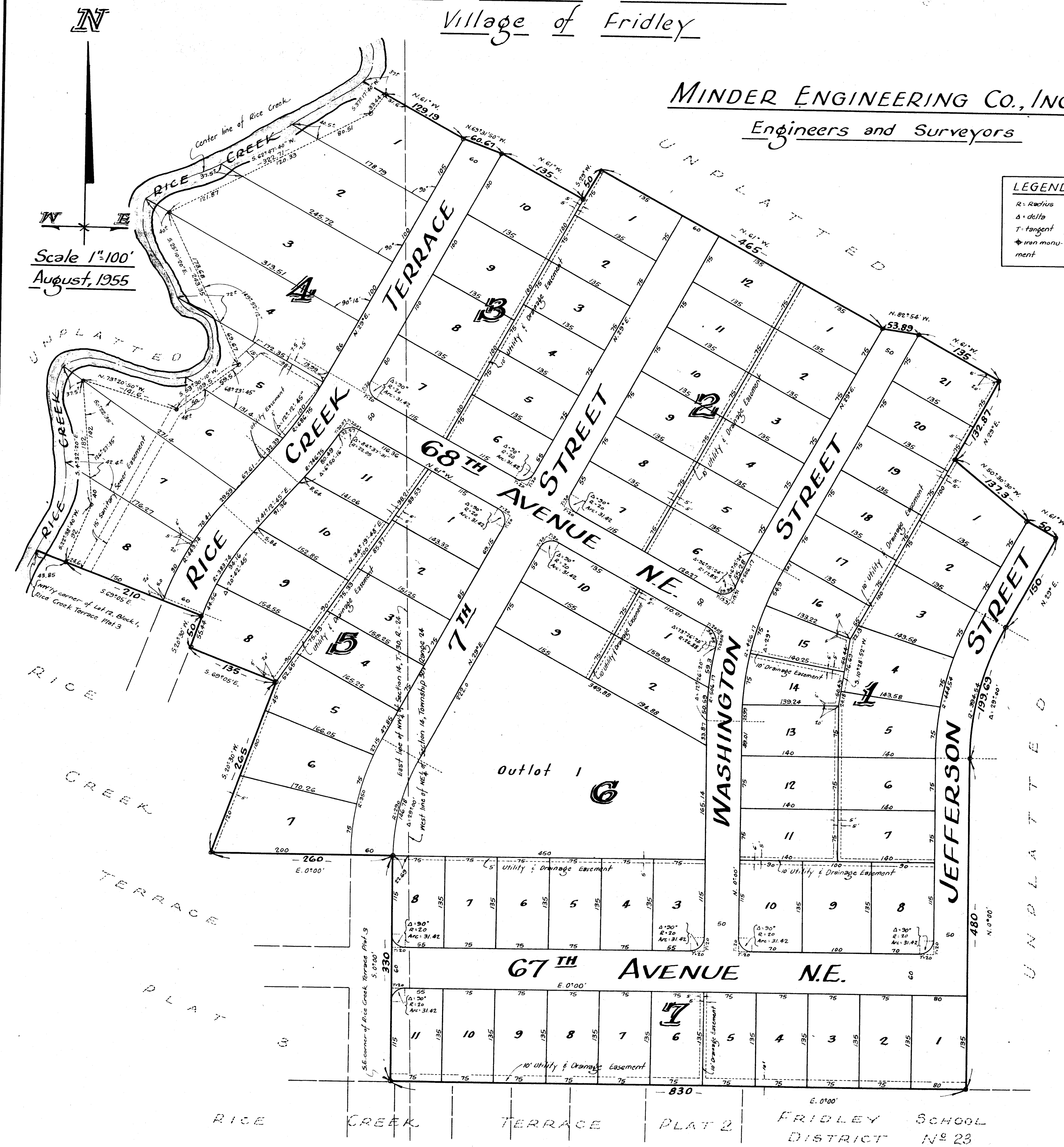


RICE CREEK TERRACE PLAT 4

ANOKA COUNTY, MINNESOTA
Village of Fridley

MINDER ENGINEERING CO., INC.
Engineers and Surveyors



Scale 1"=100'
August, 1955

LEGEND
 R. Radius
 Δ. delta
 T. tangent
 Iron monument

KNOW ALL MEN BY THESE PRESENTS: that we, Rice Creek Developers, Inc., a Minnesota Corporation, owners and proprietors and C.A. Nelson Farms, Inc., a Minnesota Corporation, mortgagee of the following described property situate in the State of Minnesota and County of Anoka to-wit: that part of the North 1/2 of Section 14, Township 30, Range 24, Anoka County, Minnesota, described as follows: Beginning at the Southeast corner of Rice Creek Terrace Plat 3, according to the map or plat thereof on file and of record in the office of the Register of Deeds in and for Anoka County, Minnesota; thence East 0°00' 830 feet; thence North 0°00' 480 feet; thence Northeastly on a tangential curve to the right with a radius of 394.54 feet, a distance of 193.09 feet; thence North 29°0' East, 150 feet along a line tangent to the last described curve; thence North 61°0' West, 50 feet; thence North 50°30' 20" West, 137.3 feet; thence North 29°0' East, 132.87 feet; thence North 61°0' West, 135 feet; thence North 62°54' West, 53.89 feet; thence North 61°0' West, 465 feet; thence South 29°0' West, 50 feet; thence North 61°0' West, 135 feet; thence North 69°31' 50" West, 60.67 feet; thence North 61°0' West, 166.2 feet more or less to the centerline of Rice Creek; thence Southwesterly, Southerly, and Southeastly along the centerline of said Rice Creek to Northwesterly corner of Lot 12, Block 1, of said Rice Creek Terrace Plat 3; thence Southeastly, Southerly and Southwesterly along the Easterly boundary of said Rice Creek Terrace Plat 3, to the point of beginning. Note: for the purpose of this description the East boundary line of said Rice Creek Terrace Plat 3 and also the East line of 7th Street N.E. was assumed due North and South. Have caused the same to be surveyed and platted as RICE CREEK TERRACE PLAT 4, and do hereby donate and dedicate to the public for public use forever the Terrace, Streets and Avenues as shown on the annexed plat, also subject to the Utility Easements as shown on the annexed plat for use of municipality or other public utilities, for installation and maintenance of facilities installed in and over said easements to serve adjacent or other premises in the vicinity, also subject to Sewer and Drainage easements for use of municipality as shown on the annexed plat. In witness whereof said Rice Creek Developers, Inc. has caused these presents to be signed by its corporate seal, to be hereunto affixed this 31st day of August A.D. 1955, also in witness whereof said C.A. Nelson Farms, Inc., has caused these presents to be signed by its corporate seal, to be hereunto affixed this 31st day of August A.D. 1955.

In Presence of:
 [Signatures] Rice Creek Developers, Inc. President and Secretary
 [Signatures] C.A. Nelson Farms, Inc. President and Secretary

State of Minnesota } s.s. On this 31st day of August A.D. 1955, before me, a Notary Public, within and for said County and State personally appeared Harvey H. Peterson and Wyman Smith, to me personally known, who, being each by me duly sworn did say that they are respectively the President and the Secretary of Rice Creek Developers, Inc., the corporation named in the foregoing instrument, and that the seal affixed to said instrument is the corporate seal of said Corporation, and that said instrument was signed in behalf of said Corporation by authority of its Board of Directors and said Harvey H. Peterson and Wyman Smith acknowledged said instrument to be the free act and deed of said Corporation.

State of Minnesota } s.s. On this 31st day of August A.D. 1955, before me, a Notary Public, within and for said County and State personally appeared Theo. L. Nelson and Mattie C.A. Holcombe, to me personally known who, being each by me duly sworn did say that they are respectively the President and the Secretary of C.A. Nelson Farms, Inc., the Corporation named in the foregoing instrument, and that the seal affixed to said instrument is the corporate seal of said Corporation, and that said instrument was signed and sealed in behalf of said Corporation by authority of its Board of Directors and said Theo. L. Nelson and Mattie C.A. Holcombe acknowledge said instrument to be the free act and deed of said Corporation.

State of Minnesota } s.s. I hereby certify that I have surveyed and platted the property described on this plat as RICE CREEK TERRACE PLAT 4, that this plat is a correct representation of said survey; that all distances are correctly shown on said plat in feet and decimals of a foot, that the monuments for guidance of future surveys have been correctly placed in the ground as shown on said plat, that the topography of the land is correctly shown on plat, that the outside boundaries of the land are correctly designated on said plat, and that there are no wet lands or public highways to be designated on said plat other than are shown thereon.

State of Minnesota } s.s. Above certificate subscribed and sworn to before me, a Notary Public within and for said County and State on this 14th day of August A.D. 1955. We hereby certify that the Village Council of the Village of Fridley, Anoka County, Minnesota, duly accepted and approved the annexed plat of RICE CREEK TERRACE PLAT 4, at a regular meeting thereof held this 6th day of September A.D. 1955.

VILLAGE OF FRIDLEY, ANOKA COUNTY, MINNESOTA

166948
 OFFICE OF REGISTER OF DEEDS
 STATE OF MINNESOTA, COUNTY OF ANOKA } s.s.
 I hereby certify that the within instrument was filed in this office for record on the 1st day of SEP 8 1955 A.D. 1955 at 11:58 a.m. and was duly recorded in book 166948 page 14.

HEREBY CERTIFY THAT TAXES FOR THE YEAR 1955 ON THE LANDS DESCRIBED WITHIN ARE PAID
 [Signature] County Treasurer

TAXES PAID
 This 9th day of Sept 1955
 [Signature] Auditor, Anoka County, Minn.
 by Joan Cavette, Deputy

by Robert S. Hughes its Mayor
 by Erice Madecin its Clerk