

# Rice Creek Terrace Plat 6

CITY of FRIDLEY - COUNTY of ANOKA

NORTH

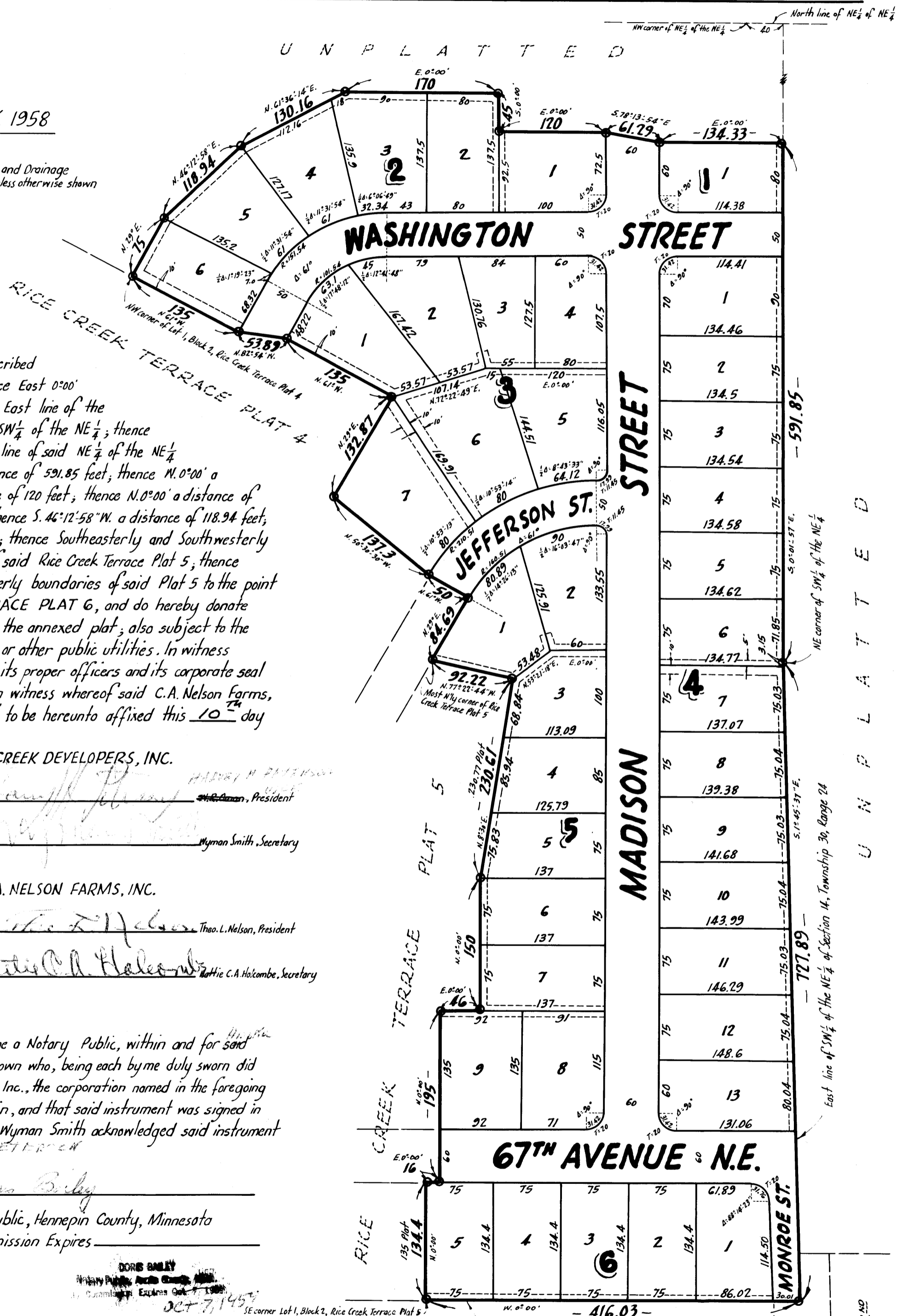


Bearings are assumed  
o Denotes Iron Monument

SCALE 1"=100' MAY, 1958



UNPLATTED



KNOW ALL MEN BY THESE PRESENTS: that we, Rice Creek Developers, Inc., a Minnesota Corporation, owners and proprietors and C.A. Nelson Farms, Inc., a Minnesota Corporation, mortgagee of the following described property situate in the State of Minnesota and County of Anoka to-wit:-- All that part of the SW 1/4 of the NE 1/4, NW 1/4 of the NE 1/4, and of the NE 1/4 of the NE 1/4, all in Section 14, Township 30, Range 24, Anoka County, Minnesota described as beginning at the Southeast corner of Lot 1, Block 2, Rice Creek Terrace Plat 5; thence East 0°00' along the Easterly extension of the South line of said lot 1 to its intersection with the East line of the said SW 1/4 of the NE 1/4; thence North along said East line to the Northeast corner of said SW 1/4 of the NE 1/4; thence N. 0°01'57" W. (said bearing is assumed) along a line if extended would intersect the North line of said NE 1/4 of the NE 1/4 at a distance of 40 feet East of the Northwest corner of said NE 1/4 of the NE 1/4, for a distance of 591.85 feet; thence N. 0°00' a distance of 134.33 feet; thence N. 78°13'54" W. a distance of 61.29; thence N. 0°00' a distance of 120 feet; thence N. 0°00' a distance of 45 feet; thence N. 0°00' a distance of 170 feet; thence S. 61°36'14" W. a distance of 130.16 feet; thence S. 45°12'58" W. a distance of 118.94 feet; thence Southeasterly and Southwesterly along the Northerly and Easterly boundaries of said Plat 4 to the most Northerly corner of said Rice Creek Terrace Plat 5; thence Southeasterly, Southwesterly, Southerly and Westerly along the Northerly and Easterly boundaries of said Plat 5 to the point of beginning. Have caused the same to be surveyed and platted as RICE CREEK TERRACE PLAT 6, and do hereby donate and dedicate to the public for public use forever the Streets and Avenue as shown on the annexed plat, also subject to the Utility and Drainage Easements as shown on the annexed plat for use of municipality or other public utilities. In witness whereof said Rice Creek Developers, Inc., has caused these presents to be signed by its proper officers and its corporate seal to be hereunto affixed this 10th day of JUNE A.D. 1958, and also in witness whereof said C.A. Nelson Farms, Inc., has caused these presents to be signed by its proper officers and its corporate seal to be hereunto affixed this 10th day of JUNE A.D. 1958.

In Presence of

RICE CREEK DEVELOPERS, INC.

Harvey H. Peterson and Myman Smith  
As to Rice Creek Developers, Inc.  
Harvey H. Peterson, President  
Myman Smith, Secretary

C.A. NELSON FARMS, INC.

John D. Nelson and Hattie C.A. Holcombe  
As to Theo. L. Nelson and Hattie C.A. Holcombe  
John D. Nelson, President  
Hattie C.A. Holcombe, Secretary

State of Minnesota } s.s. On this 10th day of JUNE A.D. 1958, before me a Notary Public, within and for said County of Hennepin } County and State personally appeared Harvey H. Peterson and Myman Smith, to me personally known who, being each by me duly sworn did say that they are respectively the President and the Secretary of Rice Creek Developers, Inc., the corporation named in the foregoing instrument, and that the seal affixed to said instrument is the corporate seal of said Corporation, and that said instrument was signed in behalf of said Corporation by authority of its Board of Directors and said Harvey H. Peterson and Myman Smith acknowledged said instrument to be the free act and deed of said Corporation.

Dora Bely  
Notary Public, Hennepin County, Minnesota  
My Commission Expires \_\_\_\_\_

190447  
OFFICE OF REGISTER OF DEEDS  
STATE OF MINNESOTA, COUNTY OF ANOKA  
I hereby certify that the within instrument was filed in this office for record on the \_\_\_\_\_ day of \_\_\_\_\_ A.D. 1958 at \_\_\_\_\_ o'clock P.M., and was duly recorded in book \_\_\_\_\_ of Plate \_\_\_\_\_  
Hesterdecker  
Register of Deeds  
By Margaret Russell Deputy

Dora Bely  
Notary Public, Hennepin County, Minnesota  
My Commission Expires \_\_\_\_\_

FRIDLEY SCHOOL DISTRICT No 23

MINDER ENGINEERING CO., INC.  
Engineers & Surveyors

State of Minnesota } s.s. On this 10 day of JUNE A.D. 1958, before me a Notary Public, within and County of Hennepin } for said County and State personally appeared Theo. L. Nelson and Hattie C.A. Holcombe, to me personally known who, being each by me duly sworn did say that they are respectively the President and Secretary of C.A. Nelson Farms, Inc., the Corporation named in the foregoing instrument, and that the seal affixed to said instrument is the corporate seal of said Corporation, and that said instrument was signed and sealed in behalf of said Corporation by authority of its Board of Directors and said Theo. L. Nelson and Hattie C.A. Holcombe acknowledged said instrument to be the free act and deed of said Corporation.

JOHN D. NELSON  
Notary Public, Hennepin County, Minn.  
My Commission Expires April 6, 1965.

John D. Nelson  
Notary Public, Hennepin County, Minnesota  
My Commission Expires April 6, 1965

I hereby certify that I have surveyed and platted the property described on this plat as RICE CREEK TERRACE PLAT 6; that this plat is a correct representation of said survey; that all distances are correctly shown on said plat in feet and decimals of a foot; that the monuments for guidance of future surveys have been correctly placed in the ground as shown on said plat; that the topography of the land is correctly shown on plat; that the outside boundaries of the land are correctly designated on said plat, and that there are no wet lands or public highways to be designated on said plat other than are shown thereon.

E. A. Rattner  
Surveyor - Minnesota Registration No 3795

State of Minnesota } s.s. Above certificate subscribed and sworn to before me, a Notary Public within and for said County of Hennepin } County and State on this 3 day of JUNE A.D. 1958.

Lee S. Schmitt  
Notary Public, Hennepin County, Minnesota  
My Commission Expires Dec 5 1961

We hereby certify that the City Council of the City of Fridley, Anoka County, Minnesota, duly accepted and approved the annexed plat of RICE CREEK TERRACE PLAT 6, at a regular meeting thereof held this 8th day of MAY A.D. 1958.

CITY of FRIDLEY, ANOKA COUNTY, MINNESOTA

Frank P. Ho Grand Mayor  
by Luzanne M. ... Clerk

TAXES PAID

This 10th day of JUNE 1958  
Harriet Campbell  
Auditor, Anoka County, Minn.  
By \_\_\_\_\_ Deputy

I HEREBY CERTIFY THAT TAXES FOR THE YEAR 1957 ON THE LANDS DESCRIBED WITHIN ARE PAID  
Hattie C. Bowers  
County Treasurer