

Rice Creek Terrace Plat 7

City of Fridley, County of Anoka
MINDER ENGINEERING Co., Inc.
Engineers and Surveyors

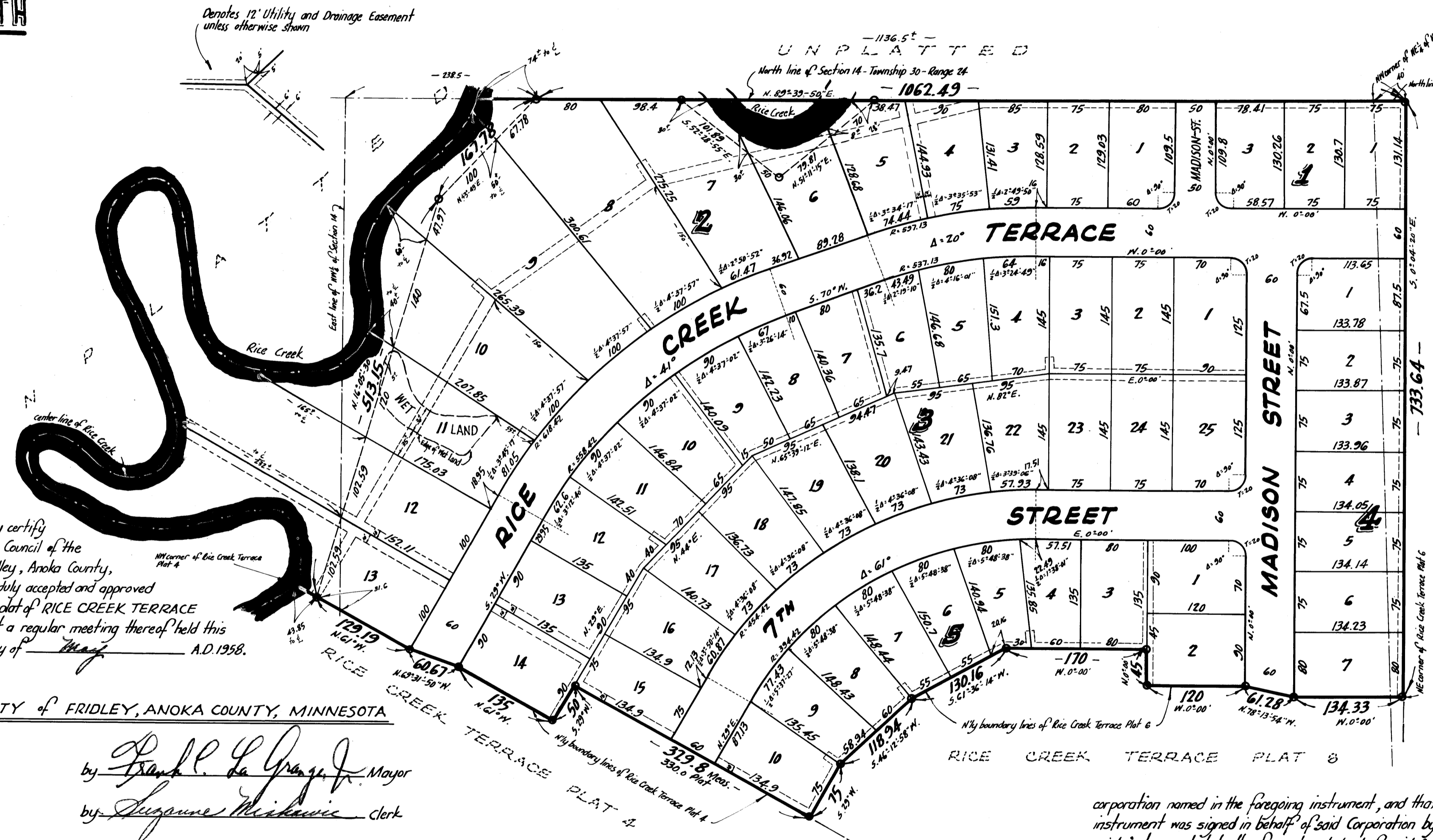
OFFICE OF REGISTER OF DEEDS
STATE OF MINNESOTA, COUNTY OF ANOKA } ss

I hereby certify that the within instrument was filed in this office for record on the _____ day of SEP 20 1958 A.D. 1958, all in accordance with and was duly recorded in book R. of Plat page 5.

Gertrude Sumner
Register of Deeds
By Margaret Russell
Deputy

Bearings are assumed
Scale 1"=100'
o Denotes Iron Monument
September, 1958

NORTH



We hereby certify that the City Council of the City of Fridley, Anoka County, Minnesota, duly accepted and approved the annexed plat of RICE CREEK TERRACE PLAT 7, at a regular meeting thereof held this 8th day of March A.D. 1958.

CITY OF FRIDLEY, ANOKA COUNTY, MINNESOTA

by Frank L. La Grange, Jr. Mayor
by Suzanne Mikiewicz Clerk

I hereby certify that I have surveyed and platted the property described on this plat as RICE CREEK TERRACE PLAT 7, that this plat is a correct representation of said survey, that all distances are correctly shown on said plat in feet and decimals of a foot, that the monuments for guidance of future surveys have been correctly placed in the ground as shown on said plat, that the topography of the land is correctly shown on the plat, that the outside boundaries of the land are correctly designated on said plat, and that there are no wet lands or public highways to be designated on said plat other than are shown thereon.

E. A. Rathbun
Surveyor - Minnesota Registration N° 3795

State of Minnesota } s.s. Above certificate subscribed and sworn to before me, a Notary Public within and for said State and County on this 9th day of September A.D. 1958.

John D. Nelson
Notary Public, Hennepin County, Minnesota
My Commission Expires April 6, 1961

TAXES PAID
AND TRANSFER ENTERED
SEP 20 1958
Kenneth W. Campbell
Auditor, Anoka County
By John E. Hayes Deputy

I HEREBY CERTIFY THAT TAXES FOR THE YEAR 1957 ON THE LANDS DESCRIBED WITHIN ARE PAID
Sharon D. Bonner
County Treasurer

State of Minnesota } County of Hennepin } On this 12th day of September A.D. 1958, before me a Notary Public, within and for said County and State personally appeared Theo. L. Nelson and Hattie C.A. Holcombe, to me personally known who, being each by me duly sworn did say that they are respectively the President and the Secretary of C.A. Nelson Farms, Inc., the corporation named in the foregoing instrument, and that the seal affixed to said instrument is the corporate seal of said Corporation, and that said instrument was signed in behalf of said Corporation by authority of its Board of Directors and said Theo. L. Nelson and Hattie C.A. Holcombe acknowledged said instrument to be the free act and deed of said Corporation.

KNOW ALL MEN BY THESE PRESENTS: That we, Rice Creek Developers, Inc., a Minnesota Corporation, owners and proprietors and C.A. Nelson Farms Inc., a Minnesota Corporation, mortgagee of the following described property situate in the State of Minnesota, and County of Anoka to-wit: All that part of the North $\frac{1}{2}$ of the NE $\frac{1}{4}$, and of the NE $\frac{1}{4}$ of the NW $\frac{1}{4}$, all in Section 14, Township 30, Range 24, Anoka County, Minnesota described as beginning at the NE corner of Rice Creek Terrace Plat 6, thence N. 0° 04' 20" W. (said bearing is assumed) a distance of 733.64 feet more or less to a point on the North line of the NE $\frac{1}{4}$ of the NE $\frac{1}{4}$, 40 feet East of the NW corner of said NE $\frac{1}{4}$ of the NE $\frac{1}{4}$; thence West along the North line of said Section 14 a distance of 1136.5 feet more or less to the center line of Rice Creek; thence in a Southerly direction along the center line of said Rice Creek to the NW corner of Rice Creek Terrace Plat 4; thence S. 1/4 N. 1/4 E. along the Northernly boundary lines of Rice Creek Terrace Plats 4 and 6 to the place of beginning. Have caused the same to be surveyed and platted as RICE CREEK TERRACE PLAT 7, and do hereby donate and dedicate to the public for public use forever the Streets and Terrace as shown on the annexed plat, also subject to the Utility and Drainage Easements as shown on the annexed plat for use of municipality or other public utilities. In witness whereof said Rice Creek Developers, Inc., has caused these presents to be signed by its proper officers and its corporate seal to be hereunto affixed this 12th day of September A.D. 1958, and also in witness whereof said C.A. Nelson Farms, Inc., has caused these presents to be signed by its proper officers, and its corporate seal to be hereunto affixed this 12th day of September A.D. 1958.

In Presence of
Wynman Smith (Secretary)
John D. Nelson (President)
RICE CREEK DEVELOPERS, INC.
C.A. NELSON FARMS, INC.

State of Minnesota } County of Hennepin } On this 12th day of September A.D. 1958, before me a Notary Public, within and for said County and State personally appeared W.R. Oman and Wynman Smith, to me personally known who, being each by me duly sworn did say that they are respectively the President and the Secretary of Rice Creek Developers, Inc., the corporation named in the foregoing instrument, and that the seal affixed to said instrument is the corporate seal of said Corporation, and that said instrument was signed in behalf of said Corporation by authority of its Board of Directors and said W.R. Oman and Wynman Smith acknowledged said instrument to be the free act and deed of said Corporation.

Gary Hedlund
Notary Public, Hennepin County, Minnesota
My Commission Expires Feb 18th, 1962

JOHN D. NELSON
Notary Public, Hennepin County, Minn.
My Commission Expires April 6, 1958

John D. Nelson
Notary Public, Hennepin County, Minnesota
My Commission Expires April 6, 1965