

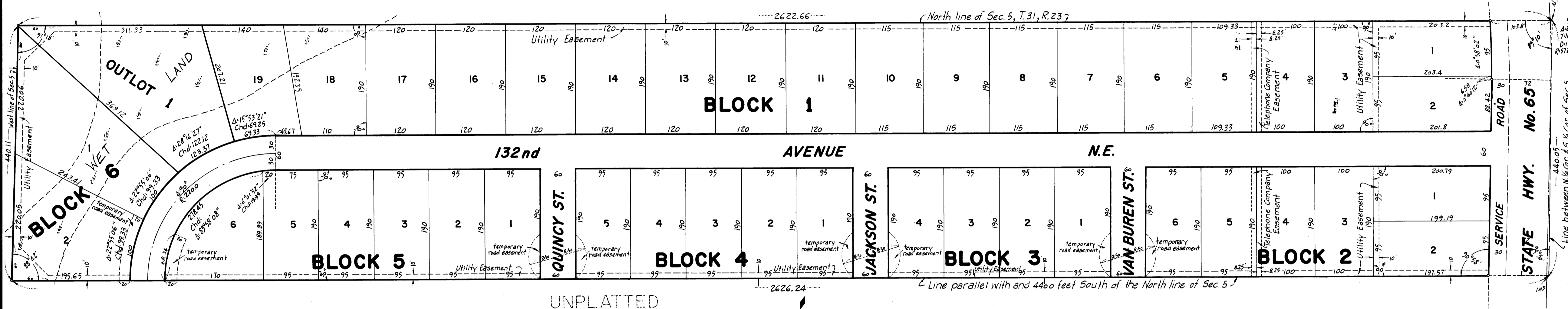
RIPPBERGER'S ADDITION

VILLAGE OF BLAINE
ANOKA COUNTY, MINNESOTA

WM. L. VOIGT
5809 Pearson Drive
Minneapolis 22, Minn.
SURVEYOR

SCALE: 1"=100'
+ INDICATES IRON MONUMENT

UNPLATTED



UNPLATTED

KNOW ALL MEN BY THESE PRESENTS: that R.W. Rippberger, Incorporated, a Minnesota corporation, owners and proprietors of the following described property situate in the State of Minnesota and County of Anoka to-wit: the North four hundred forty (440.0) feet of the North one-half (N¹/₂) of the Northwest one-quarter (N.W.¹/₄) of Section 5, Township 31, Range 23

Have caused the same to be surveyed and platted as RIPPBERGER'S ADDITION, and do hereby donate and dedicate to the public for public use forever the streets, as shown on the annexed plat, also subject to the Utility easements as shown on the annexed plat.
(Avenue, road, and highway)

In witness whereof R.W. Rippberger, Incorporated has caused these presents to be signed by its proper officers and its corporate seal to be hereunto affixed this 19 day of July A.D. 1957.

In presence of:

R. M. Page and Richard A. Severson as to W. H. Rippberger President
R. M. Page and Richard A. Severson as to R. H. Rippberger Secretary-Treasurer

R.W. RIPPBERGER Inc.

I hereby certify that I have surveyed and platted the land described in the dedication on this plat as RIPPBERGER'S ADDITION; that this plat is a correct representation of said survey; that all distances are correctly shown on said plat in figures denoting feet and decimals of a foot; that the monuments for the guidance of future surveys have been correctly placed in the ground as shown on said plat; that the topography of the land is correctly shown on said plat; that the outside boundaries of that plat are correctly designated on said plat; and that there are no wet lands or public highways to be designate other than are shown thereon.

Wm L. Voigt
Registered Land Surveyor, Minnesota Reg. No. 5522

STATE OF MINNESOTA } ss. The above certificate was subscribed and sworn to before me, a Notary Public, within and for said County of Hennepin } county and state on this 18 day of July A.D. 1957.

Wm E. Alexander
Notary Public, Hennepin County, Minn.
My Commission Expires June 25, 1961

STATE OF MINNESOTA } ss. On this 19 day of July A.D. 1957, before me, a Notary Public, within and for said County of Hennepin } and State, personally appeared W.H. Rippberger and R.W. Rippberger, who each being duly sworn did say that they are respectively the President and Secretary-Treasurer of R.W. Rippberger, Incorporated, a Minnesota corporation, the corporation named in the foregoing instrument, and the seal affixed to same instrument is the corporate seal of said corporation, and that said instrument was signed and sealed in behalf of said corporation by authority of its Board of Directors, and said President and Secretary-Treasurer acknowledged said instrument to be the free act and deed of said corporation.

Kyle M. Page
Notary Public, Hennepin County, Minnesota
My Commission Expires April 24, 1959

KYLE M. PAGE
Notary Public, Hennepin County, Minn.
My commission expires April 24, 1959

We hereby certify that the Village Council of the Village Blaine, Anoka County, Minnesota, duly accepted and approved the annexed plat of RIPPBERGER'S ADDITION at a regular meeting thereof held this 19 day of July A.D. 1957.

Alfred Bernatier
Mayor
John V. Bleef
Clerk

The annexed plat of RIPPBERGER'S ADDITION was checked and approved by the Planning and Zoning Commission of the Village of Blaine, Minnesota at a regular meeting thereof held this 19 day of July A.D. 1957.

W. W. Hunter
Chairman
Edna Bremer
Clerk

I HEREBY CERTIFY THAT TAXES FOR THE YEAR 1956
ON THE LAND DESCRIBED WITHIN ARE PAID
Walter D. Bowers
County Treasurer
By R. A. Peterson, Deputy

OFFICE OF THE CLERK OF RECORDS
STATE OF MINNESOTA
COUNTY OF ANOKA

10
By Margaret Russell
Deputy

TAXES PAID
AND TRANSFER ENTERED

JUL 20 1957
Amos H. Thompson
Recorder, Anoka County

