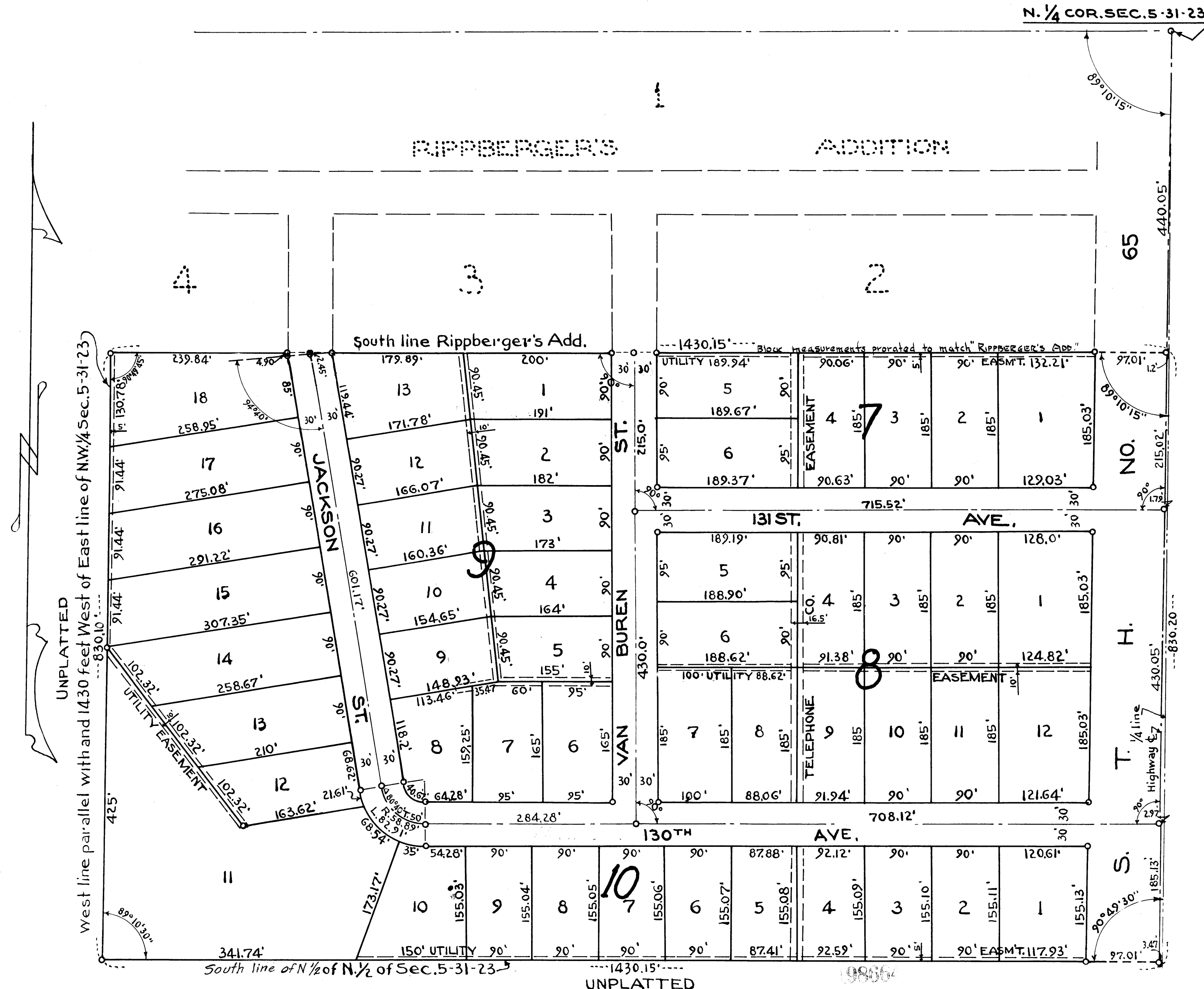


RIPPBERGER'S SECOND ADDITION

VILLAGE OF BLAINE

SCALE 1" = 100' • INDICATES IRON MONUMENT

ANOKA COUNTY
MINN.



Know all men by these presents that R. W. Ripberger Inc., a Minnesota Corporation, owners and proprietors of the following described property situated in the County of Anoka, State of Minnesota, to-wit: All that part of the East (measured at right angles to the East line thereof) 1430 feet of the North half (N 1/2) of the Northwest quarter (NW 1/4) of Section five (5), Township thirty one (31) North, Range twenty three (23) West, Anoka County, Minnesota, according to government survey thereof; lying South of Ripberger's Addition; subject to S.T.H. No. 65 and subject to telephone cable easement; have caused the same to be surveyed and platted as RIPPBERGER'S SECOND ADDITION and do hereby donate and dedicate to the public and for public use forever the streets and avenues as shown on the annexed plat. In witness whereof we have hereunto set our hands and seal this 4th day of March 1959 A.D.

In the Presence of:

W. H. Ripberger
Witness
Lois D. Page

R. W. Ripberger Inc.
R. W. Ripberger Pres.
R. W. Ripberger Sec.-Treas.

STATE OF MINNESOTA }
COUNTY OF Hennepin } SS

On this 4th day of March 1959 A.D. before me, a notary public, within and for said County and State, personally appeared W. H. Ripberger and R. W. Ripberger, to me personally known, who being by me, each duly sworn, did say that they are, respectively, the President and Secretary-Treasurer of R. W. Ripberger Inc., the corporation named in the foregoing instrument; that the seal affixed to said instrument is the corporation seal of said corporation; and that said instrument was signed and sealed in behalf of said corporation by authority of its Board of Directors and said W. H. Ripberger and R. W. Ripberger acknowledge said instrument to be the free act and deed of said corporation.

Lois D. Page
Notary Public, Hennepin County, Minn.
My commission expires April 24, 1959

STATE OF MINNESOTA }
COUNTY OF Hennepin } SS

I do hereby certify that I have surveyed and platted the property described on this plat as RIPPBERGER'S SECOND ADDITION; that this plat is a correct representation of said survey; that all distances are correctly shown on said plat in feet and decimals of a foot; that the monuments for guidance of future surveys have been correctly placed in the ground as shown on the plat; that the outside boundary lines are correctly designated on the plat; that the topography of the land is correctly shown on the plat, and there are no wet lands or public highways to be designated on said plat other than shown thereon.

Donald D. Carley
Minnesota Registration No. 3527

STATE OF MINNESOTA }
COUNTY OF Ramsey } SS

Above certificate subscribed and sworn to before me, a notary public within and for said County and State on this 23rd day of February 1959 A.D.

Dwain Cronquist
Notary Public, Ramsey County, Minn.
My Commission expires Aug 27, 1963

Approved by the Village Council of Blaine, this 20th day of February 1959 A.D.

I HEREBY CERTIFY THAT TAXES FOR THE YEAR 1958 ON THE LANDS DESCRIBED WITHIN ARE PAID
Chatterbox Powers County Treasurer
John V. Olney Clerk

MILNER W. CARLEY
AND ASSOCIATES
CIVIL ENGINEERS & SURVEYORS

OFFICE OF REGISTER OF DEEDS
STATE OF MINNESOTA, COUNTY OF ANOKA } SS

I have read the within instrument and certify for record on this 23rd day of February 1959 A.D. 1959
By *Margaret Russell* Deputy

TAXES PAID

This 23rd day of February 1959
Harriet G. Campbell
Auditor, Anoka County, Minn.
By *Richard R. Peterson* Deputy

Original

23