

# RIPPBERGER'S THIRD ADDITION

## VILLAGE OF BLAINE

SCALE 1" = 100'

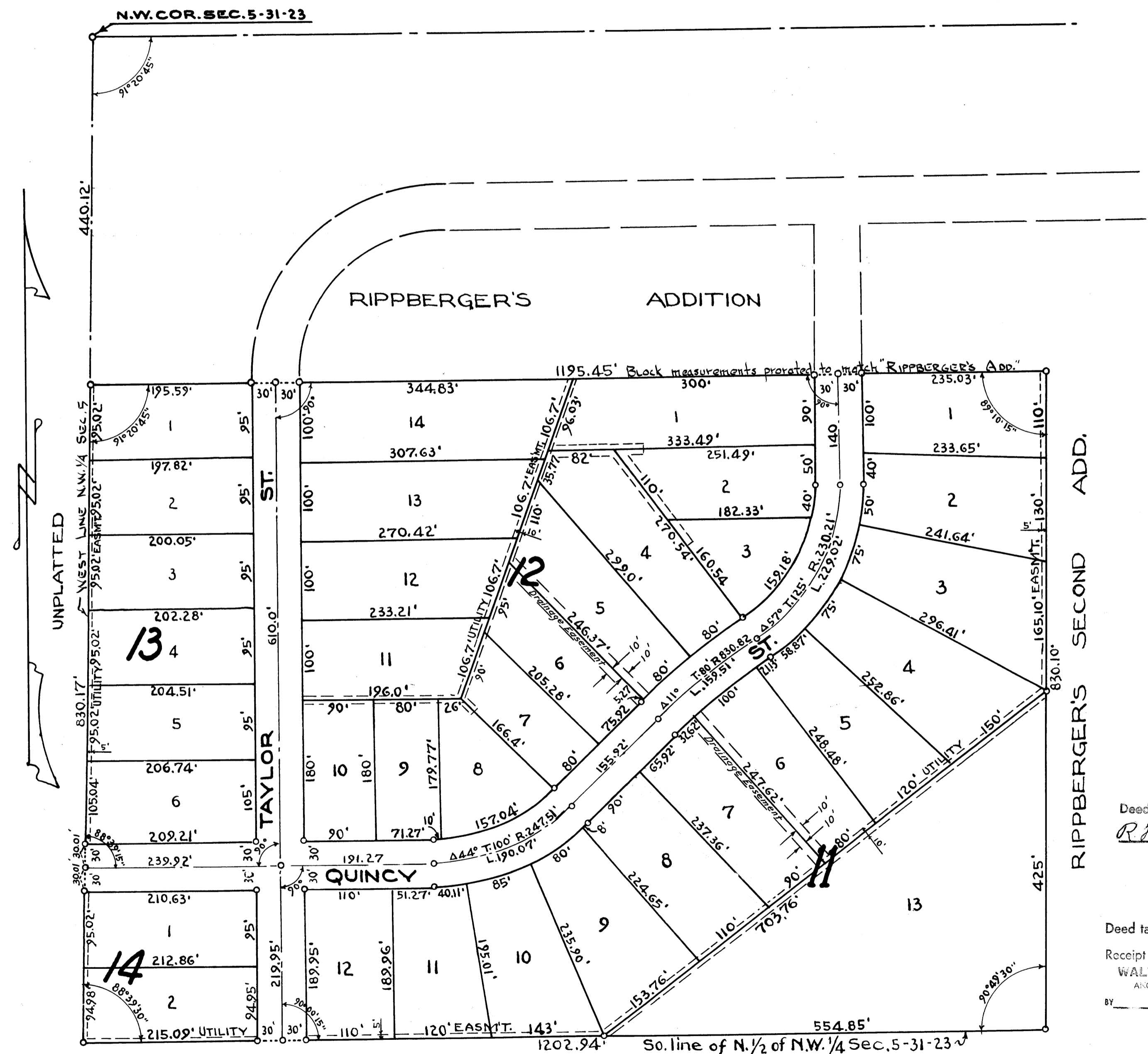
● INDICATES IRON MONUMENT

## ANOKA COUNTY MINN.

OFFICE OF REGISTER OF DEEDS  
STATE OF MINNESOTA, COUNTY OF ANOKA } SS

I hereby certify that the within instrument was filed in this office for record on the day of March 1959 at 2:15 o'clock P.M., and was duly recorded in book "L of Plats" page 2.

*Gertrude Skinner*  
Register of Deeds  
By *Margaret Russell* Deputy



Know all men by these presents that R. W. Ripberger Inc., a Minnesota Corporation, owners and proprietors of the following described property situated in the County of Anoka, State of Minnesota, to-wit: All that part of the North half (N 1/2) of the Northwest quarter (NW 1/4) of Section five (5), Township thirty one (31) North, Range twenty three (23) West, except Ripberger's Addition and except Ripberger's Second Addition; have caused the same to be surveyed and platted as RIPPBERGER'S THIRD ADDITION and do hereby donate and dedicate to the public and for public use forever the streets as shown on the annexed plat. In witness whereof we have hereunto set our hands and seal this 4<sup>th</sup> day of March 1959 A.D.

In the Presence of  
 R. W. Ripberger Inc.  
*W. H. Ripberger* Pres.  
*R. W. Ripberger* Sec.-Treas.  
 Witnesses: *Ky M. Page* and *Walter D. Bowers*

STATE OF MINNESOTA } SS  
 COUNTY OF Anoka }  
 On this 4<sup>th</sup> day of March 1959 A.D. before me,

a notary public, within and for said County and State, personally appeared W. H. Ripberger and R. W. Ripberger, to me personally known, who being by me, each duly sworn, did say that they are, respectively, the President and Secretary-Treasurer of R. W. Ripberger Inc., the corporation named in the foregoing instrument; that the seal affixed to said instrument is the corporation seal of said corporation; and that said instrument was signed and sealed in behalf of said corporation by authority of its Board of Directors and said W. H. Ripberger and R. W. Ripberger acknowledge said instrument to be the free act and deed of said corporation.

*Ky M. Page*  
 Notary Public, Anoka County, Minn.  
 My commission expires April 24, 1959

STATE OF MINNESOTA } SS  
 COUNTY OF Anoka }  
 I do hereby certify that I have surveyed and platted the property described on this plat as RIPPBERGER'S THIRD ADDITION; that this plat is a correct representation of said survey; that all distances are correctly shown on said plat in feet and decimals of a foot; that the monuments for guidance of future surveys have been correctly placed in the ground as shown on the plat; that the outside boundary lines are correctly designated on the plat; that the topography of the land is correctly shown on the plat; and there are no wet lands or public highways to be designated on said plat other than shown thereon.  
 Deed tax hereon due \$ 1.10  
*R. W. Ripberger*  
 Vendor or Grantor  
 Deed tax paid \$ 1.10  
 Receipt No. 69873  
 WALTER D. BOWERS  
 ANOKA COUNTY TREASURER  
 BY *D. Larson* Deputy

STATE OF MINNESOTA } SS  
 COUNTY OF Ramsey }  
 Above certificate subscribed and sworn to before me, a notary public within and for said County and State on this 23<sup>rd</sup> day of February 1959 A.D.  
*Dorine Cronquist*  
 Notary Public, Ramsey County, Minn.  
 My commission expires April 27, 1963

UNPLATTED  
 MILNER W. CARLEY  
 AND ASSOCIATES  
 CIVIL ENGINEERS AND  
 LAND SURVEYORS

TAXES PAID  
 This 7<sup>th</sup> day of Dec 1958  
*Kenneth P. Campbell*  
 Auditor, Anoka County, Minn.  
*Robert J. Larson* Deputy

HEREBY CERTIFY THAT TAXES FOR THE YEAR 1960 ON THE LANDS DESCRIBED WITHIN WERE PAID  
*Walter D. Bowers*  
 County Treasurer  
*W. D. Larson* Deputy

Approved by the Village Council of Blaine, this 20<sup>th</sup> day of February 1959 A.D.  
 Checked and approved this 3<sup>rd</sup> day of January A.D. 1961  
*Robert W. Anderson*  
 Anoka County Surveyor