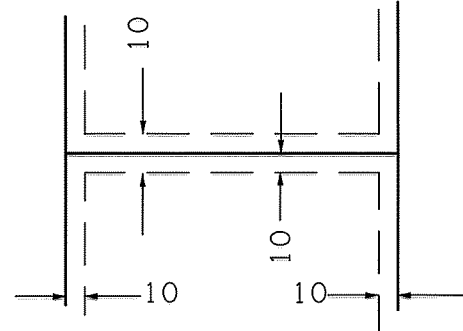


23A1504.001

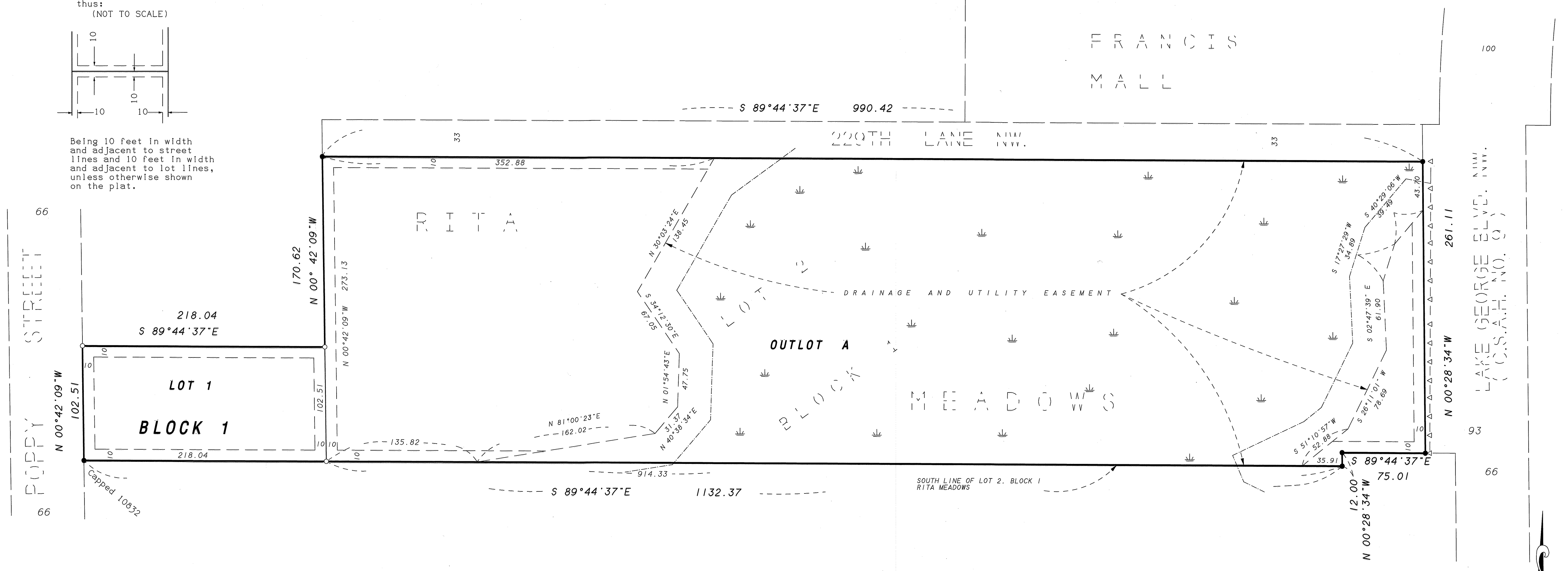
RITA MEADOWS SECOND ADDITION

CITY OF ST. FRANCIS
COUNTY OF ANOKA
SEC. 32, T.34, R.24

Drainage and utility easements are shown thus:
(NOT TO SCALE)



Being 10 feet in width and adjacent to street lines and 10 feet in width and adjacent to lot lines, unless otherwise shown on the plat.



KNOW ALL PERSONS BY THESE PRESENTS; That Steven D. Ortzel, a single person, owner of the following described property:
Lot 2, Block 1, RITA MEADOWS, Anoka County, Minnesota,

Has caused the same to be surveyed and platted as RITA MEADOWS SECOND ADDITION and does hereby dedicate to the public for public use the drainage and utility easements as created by this plat. Also dedicating to the County of Anoka the right of access onto County State Aid Highway No. 9 as shown on this plat.

In witness whereof said Steven D. Ortzel, a single person, has hereunto set his hand this 14th day of October, 2021.

Steven D. Ortzel
Steven D. Ortzel

STATE OF MINNESOTA Anoka
COUNTY OF _____

This instrument was acknowledged before me this 14th day of October, 2021 by
Steven D. Ortzel.

Lisa M. Stoll (Signature)
Lisa M. Stoll (Print Name)

Notary Public, Anoka County,
My Commission expires 1/31/24

I Randy L. Kurth do hereby certify that this plat was prepared by me or under my direct supervision; that I am a duly Licensed Land Surveyor in the State of Minnesota; that this plat is a correct representation of the boundary survey; that all mathematical data and labels are correctly designated on this plat; that all monuments depicted on this plat have been or will be correctly set within one year; that all water boundaries and wet lands, as defined in Minnesota Statutes, Section 505.01, Subd. 3, as of the date of this certificate are shown and labeled on this plat; and all public ways are shown and labeled on this plat.

Dated this 13th day of OCTOBER, 2021.

Randy L. Kurth
Randy L. Kurth, Licensed Land Surveyor
Minnesota License No. 20270

STATE OF MINNESOTA ANOKA
COUNTY OF _____

This instrument was acknowledged before me this 13th day of OCTOBER, 2021, by Randy L. Kurth.

Randy L. Kurth (Signature)
Randy L. Kurth (Print Name)

Notary Public, Anoka County, Minnesota
My Commission Expires 1-31-2025

CITY COUNCIL, CITY OF ST. FRANCIS, MINNESOTA
This plat of RITA MEADOWS SECOND ADDITION was approved and accepted by the City Council of the City of St Francis, Minnesota at a regular meeting thereof held this 1st day of September, 2021, and said plat is in compliance with the provisions of Minnesota Statutes, Section 505.03, Subd. 2.

City Council, City of St. Francis, Minnesota
[Signature]
Mayor

Jennifer Wieda
City Clerk

COUNTY SURVEYOR
I hereby certify that in accordance with Minnesota Statutes, Section 505.021, Subd.11, this plat has been reviewed and approved this 20th day of October, 2021.

David M. Ziegmeier
David M. Ziegmeier, Anoka County Surveyor

COUNTY AUDITOR/TREASURER
Pursuant to Minnesota Statutes, Section 505.21, Subd. 9, taxes payable in the year 2021 on the land hereinbefore described have been paid. Also, pursuant to Minnesota Statutes, Section 272.12, there are no delinquent taxes and transfer entered this 20 day of October, 2021.

Pamela S. LeBlanc
Property Tax Administrator

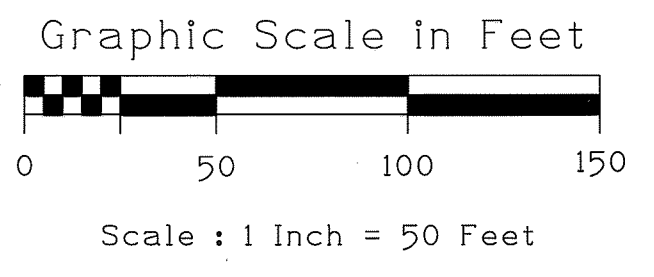
Jeanne Walle, Deputy

COUNTY RECORDER/REGISTRAR OF TITLES
COUNTY OF ANOKA, STATE OF MINNESOTA

I hereby certify that this plat of RITA MEADOWS SECOND ADDITION was filed in the office of the County Recorder/Registrar of Titles for public record on this 20 day of October, 2021, at 11:12 o'clock A.M. and was duly recorded as Document Number 23A1504.001.

Pamela S. LeBlanc
County Recorder/Registrar of Titles

Jeanne Walle, Deputy



FOR THE PURPOSES OF THIS PLAT, THE SOUTH LINE OF LOT 2, BLOCK 1, RITA MEADOWS IS ASSUMED TO BEAR SOUTH 89 DEGREES, 44 MINUTES, 37 SECONDS EAST

- Denotes 1/2 Inch Iron pipe monument found and marked RLS No. 42627 unless otherwise shown on the plat
- Denotes 1/2 Inch by 14 Inch Iron pipe monument set or to be set within one year of the recording of this plat and capped LLS 20270.
- Denotes approximate edge of wet land
- ⬇ Denotes wet land
- △— Denotes Right of Access dedicated to Anoka County.

650