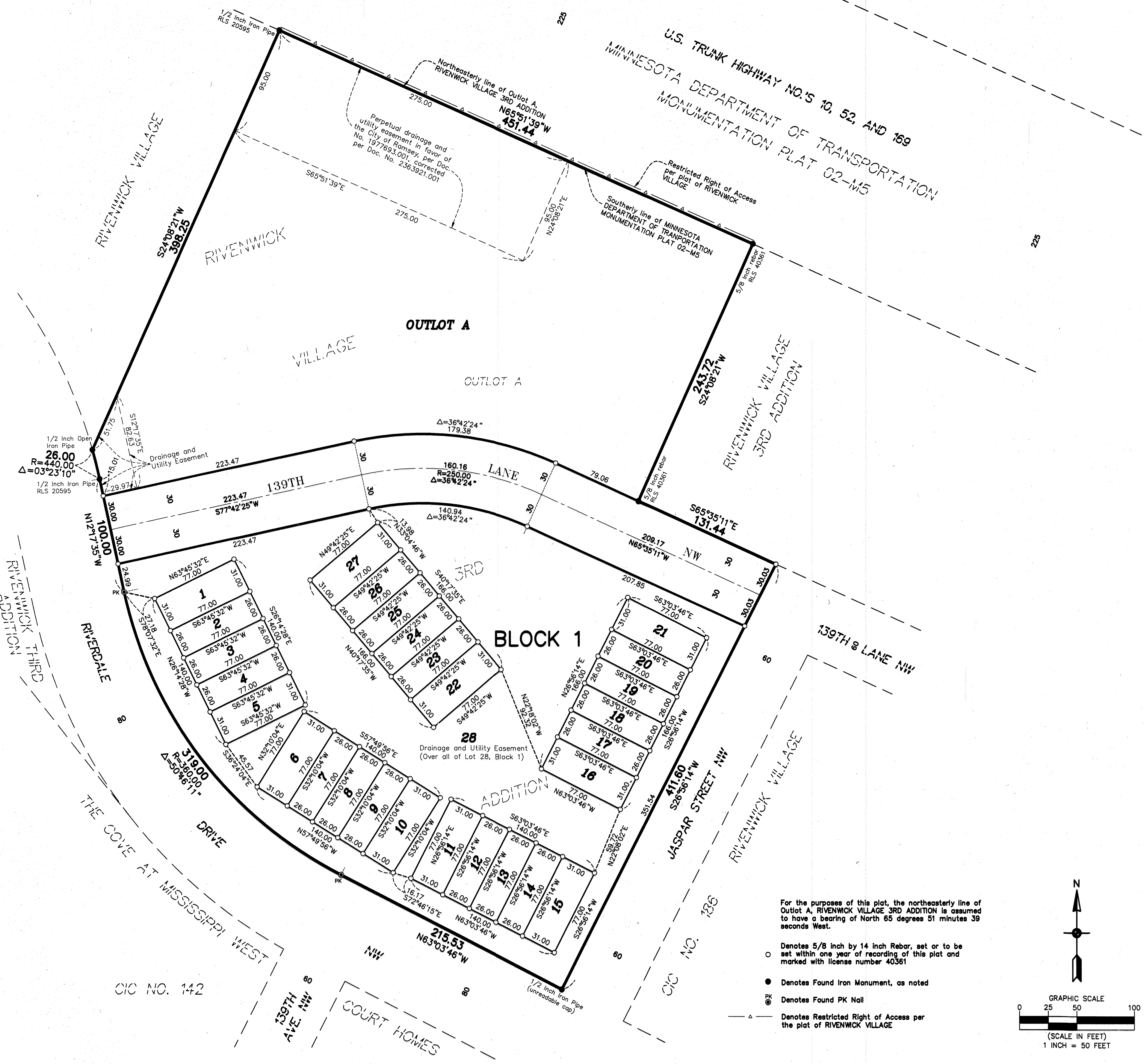


# RIVENWICK VILLAGE 4TH ADDITION



KNOW ALL PERSONS BY THESE PRESENTS: That LGI Homes—Minnesota, LLC, a Minnesota limited liability company, owner of the following described property:  
 Outlot A, RIVENWICK VILLAGE 3RD ADDITION, according to the recorded plat thereof, Anoka County, Minnesota  
 Has caused the same to be surveyed and platted as RIVENWICK VILLAGE 4TH ADDITION and does hereby dedicate to the public for public use the public ways and the drainage and utility easements as shown on this plat.  
 In witness whereof said LGI Homes—Minnesota, LLC, a Minnesota limited liability company, has caused these presents to be signed by its proper officer this 20<sup>th</sup> day of MARCH, 2023.

LGI Homes—Minnesota, LLC  
 Jay Roos as Officer

STATE OF Minnesota  
 COUNTY OF Anoka  
 This instrument was acknowledged before me on March 20, 2023 by Jay Roos as officer of LGI Homes—Minnesota, LLC, a Minnesota limited liability company, on behalf of the company.

Cynthia J. Morica (Signed)  
 Cynthia J. Morica (Printed)  
 Notary Public, Hennepin County, Minnesota  
 My commission expires January 31, 2025

I Thomas R. Balluff do hereby certify that this plat was prepared by me or under my direct supervision; that I am a duly Licensed Land Surveyor in the State of Minnesota; that this plat is a correct representation of the boundary survey; that all mathematical data and labels are correctly designated on this plat; that all monuments depicted on this plat have been, or will be correctly set within one year; that all water boundaries and wet lands, as defined in Minnesota Statutes, Section 505.01, Subd. 3, as of the date of this certificate are shown and labeled on this plat; and all public ways are shown and labeled on this plat.  
 Dated this 7<sup>th</sup> day of MARCH, 2023.

Thomas R. Balluff  
 Thomas R. Balluff, Licensed Land Surveyor  
 Minnesota License No. 40361

STATE OF Minnesota  
 COUNTY OF Anoka  
 This instrument was acknowledged before me on March 7, 2023 by Thomas R. Balluff.

Kelly Frette (Signed)  
 Kelly Frette (Printed)  
 Notary Public, State of Minnesota  
 My commission expires January 21, 2025

CITY COUNCIL, CITY OF RAMSEY, MINNESOTA  
 This plat of RIVENWICK VILLAGE 4TH ADDITION was approved and accepted by the City Council of the City of Ramsey, Minnesota at a regular meeting thereof held this 10<sup>th</sup> day of JANUARY, 2023 and said plat is in compliance with the provisions of Minnesota Statutes, Section 505.03, Subd. 2.

CITY COUNCIL, CITY OF RAMSEY, MINNESOTA  
 By: Mark E. Quisenberry Mayor  
 By: Karen Clerk

COUNTY SURVEYOR  
 I hereby certify that in accordance with Minnesota Statutes, Section 505.021, Subd. 11, this plat has been reviewed and approved this 16<sup>th</sup> day of MAY, 2023.

David M. Ziegmeier  
 David M. Ziegmeier  
 Anoka County Surveyor

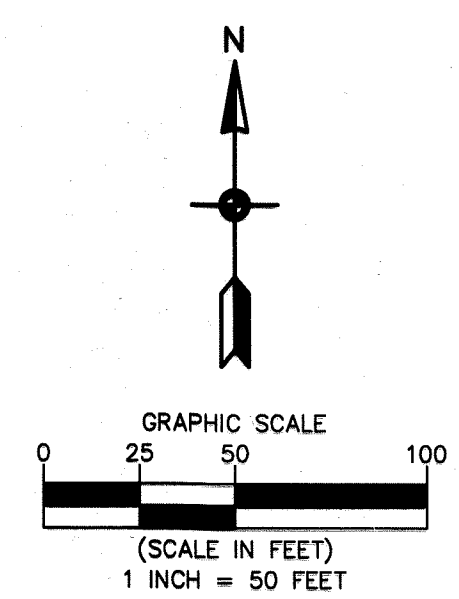
COUNTY AUDITOR/TREASURER  
 Pursuant to Minnesota Statutes, Section 505.021, Subd. 9, taxes payable in the year 2023 on the land hereinbefore described have been paid. Also, pursuant to Minnesota Statutes, Section 272.12, there are no delinquent taxes and transfer entered this 16<sup>th</sup> day of May, 2023.

Pamela J. LeBlanc  
 Property Tax Administrator  
 By: Aacy Koehler Deputy

COUNTY RECORDER/REGISTRAR OF TITLES  
 County of Anoka, State of Minnesota  
 I hereby certify that this plat of RIVENWICK VILLAGE 4TH ADDITION was filed in the office of the County Recorder/Registrar of Titles for public record on this 16<sup>th</sup> day of May, 2023 at 9:44 o'clock A.M. and was duly recorded as Document Number 2390725.002.

Pamela J. LeBlanc  
 County Recorder/Registrar of Titles  
 By: Aacy Koehler Deputy

- For the purposes of this plat, the northeastern line of Outlot A, RIVENWICK VILLAGE 3RD ADDITION is assumed to have a bearing of North 65 degrees 51 minutes 39 seconds West.
- Denotes 5/8 inch by 14 inch Rebar, set or to be set within one year of recording of this plat and marked with license number 40361
  - Denotes Found Iron Monument, as noted
  - Denotes Found PK Nail
  - △ Denotes Restricted Right of Access per the plat of RIVENWICK VILLAGE



\$56-

