

# RIVER CROSSING SECOND ADDITION

CITY OF RAMSEY  
COUNTY OF ANOKA  
SEC. 29, TWP. 32 N, RGE. 25 W

### INSTRUMENT OF DEDICATION

KNOW ALL PERSONS BY THESE PRESENTS: That the County of Anoka, a political subdivision under the laws of the State of Minnesota, owner of the following described property:

Lots 1 and 2, Block 1, RIVER CROSSING ADDITION, according to the recorded plat thereof, Anoka County, Minnesota

Has caused the same to be surveyed and platted as RIVER CROSSING SECOND ADDITION and does hereby dedicate to the public for public use the public way and the drainage and utility easements as created by this plat.

In witness whereof said Anoka County, a political subdivision under the laws of the State of Minnesota, has caused these presents to be signed by its proper officers this 9<sup>th</sup> day of March, 2022.

ANOKA COUNTY

Rhonda Sivrajah (Signature)  
Rhonda Sivrajah County Administrator  
Print Name

Scott Schulte (Signature)  
Scott Schulte Chairperson  
Print Name

STATE OF MINNESOTA  
COUNTY OF ANOKA

This instrument was acknowledged before me this 9<sup>th</sup> day of March, 2022, by Rhonda Sivrajah County Administrator, and Scott Schulte Chairperson of Anoka County, a political subdivision under the laws of the State of Minnesota, on behalf of the political subdivision.

Jill M. Ryghus (Signature)  
Jill Ryghus (Print Name)  
Notary Public, Anoka County, Minnesota  
My commission expires January 31, 2024

### SURVEYOR'S CERTIFICATION

I Andrew Hill do hereby certify that this plat was prepared by me or under my direct supervision; that I am a duly Licensed Land Surveyor in the State of Minnesota; that this plat is a correct representation of the boundary survey; that all mathematical data and labels are correctly designated on this plat; that all monuments depicted on this plat have been, or will be correctly set within one year; that all water boundaries and wet lands, as defined in Minnesota Statutes, Section 505.01, Subd. 3, as of the date of this certificate are shown and labeled on this plat; and all public ways are shown and labeled on this plat.

Dated this 16<sup>th</sup> day of February, 2022.

Andrew L. Hill  
Andrew L. Hill, Licensed Land Surveyor  
Minnesota License No. 57632

STATE OF MINNESOTA  
COUNTY OF ANOKA

This instrument was acknowledged before me this 16 day of February, 2022 by Andrew L. Hill.

Jodi Ogren (Signature)  
Jodi Ogren (Print Name)  
Notary Public, Sherburne County, Minnesota  
My commission expires 1.31.2026

### CITY COUNCIL, CITY OF RAMSEY, MINNESOTA

This plat of RIVER CROSSING SECOND ADDITION was approved and accepted by the City Council of the City of Ramsey, Minnesota at a regular meeting thereof held this 22<sup>nd</sup> day of FEBRUARY, 2022, and said plat is in compliance with the provisions of Minnesota Statutes, Section 505.03, Subd. 2.

City Council, City of Ramsey, Minnesota

By Mark E. Kuzm Mayor  
By Colleen Gustafson Clerk

### COUNTY SURVEYOR

I hereby certify that in accordance with Minnesota Statutes, Section 505.021, Subd. 11, this plat has been reviewed and approved this 9<sup>th</sup> day of March, 2022.

David M. Ziegmeier  
David M. Ziegmeier, Anoka County Surveyor

### COUNTY AUDITOR/TREASURER

Pursuant to Minnesota Statutes, Section 505.021, Subd. 9, taxes payable in the year 2022 on the land hereinbefore described have been paid. Also, pursuant to Minnesota Statutes, Section 272.12, there are no delinquent taxes and transfer entered this 9 day of MARCH, 2022.

Pamela J. LeBlanc  
Property Tax Administrator  
By Annette Schmitt, Deputy

### COUNTY RECORDER/REGISTRAR OF TITLES

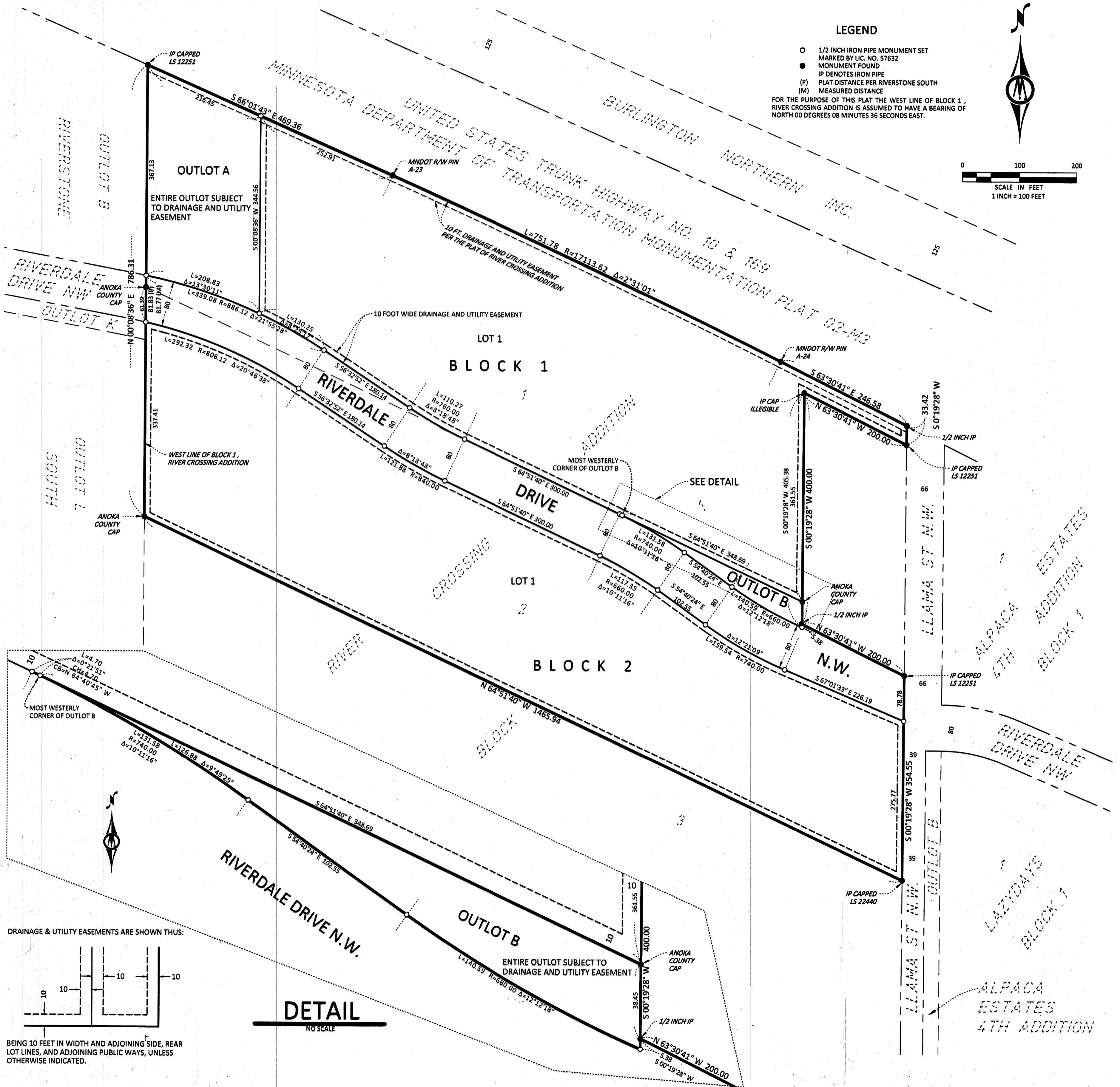
I hereby certify that this plat of RIVER CROSSING SECOND ADDITION was filed in the office of the County Recorder/Registrar of Titles for public record on this 9 day of MARCH, 2022, at 9:14 o'clock A.M. and was duly recorded as Document Number 2358553-001.

Pamela J. LeBlanc  
County Recorder/Registrar of Titles  
By Annette Schmitt, Deputy

\$56

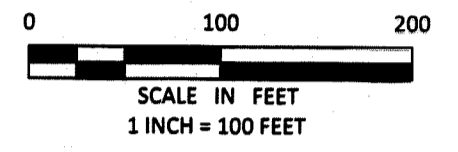


This Plat Prepared By:

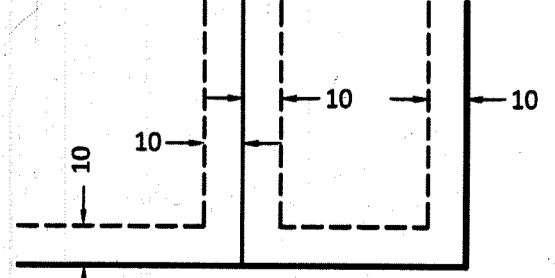


### LEGEND

- 1/2 INCH IRON PIPE MONUMENT SET MARKED BY LIC. NO. 57632
  - MONUMENT FOUND
  - IP DENOTES IRON PIPE
  - (P) PLAT DISTANCE PER RIVERSTONE SOUTH
  - (M) MEASURED DISTANCE
- FOR THE PURPOSE OF THIS PLAT THE WEST LINE OF BLOCK 1, RIVER CROSSING ADDITION IS ASSUMED TO HAVE A BEARING OF NORTH 00 DEGREES 08 MINUTES 36 SECONDS EAST.



DRAINAGE & UTILITY EASEMENTS ARE SHOWN THUS:



### DETAIL

NO SCALE

BEING 10 FEET IN WIDTH AND ADJOINING SIDE, REAR LOT LINES, AND ADJOINING PUBLIC WAYS, UNLESS OTHERWISE INDICATED.